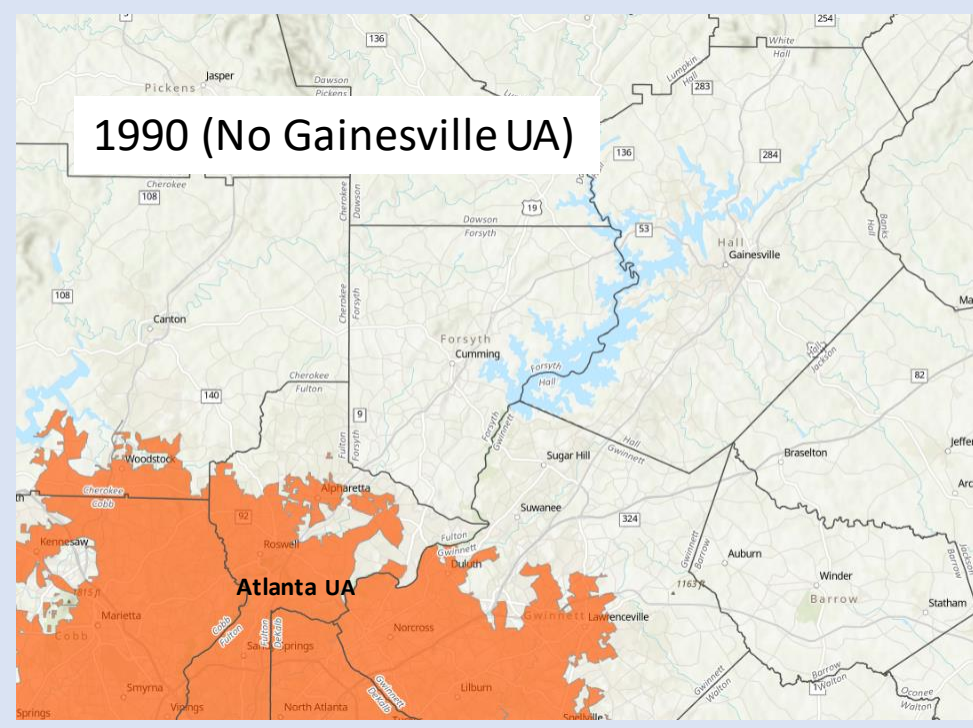
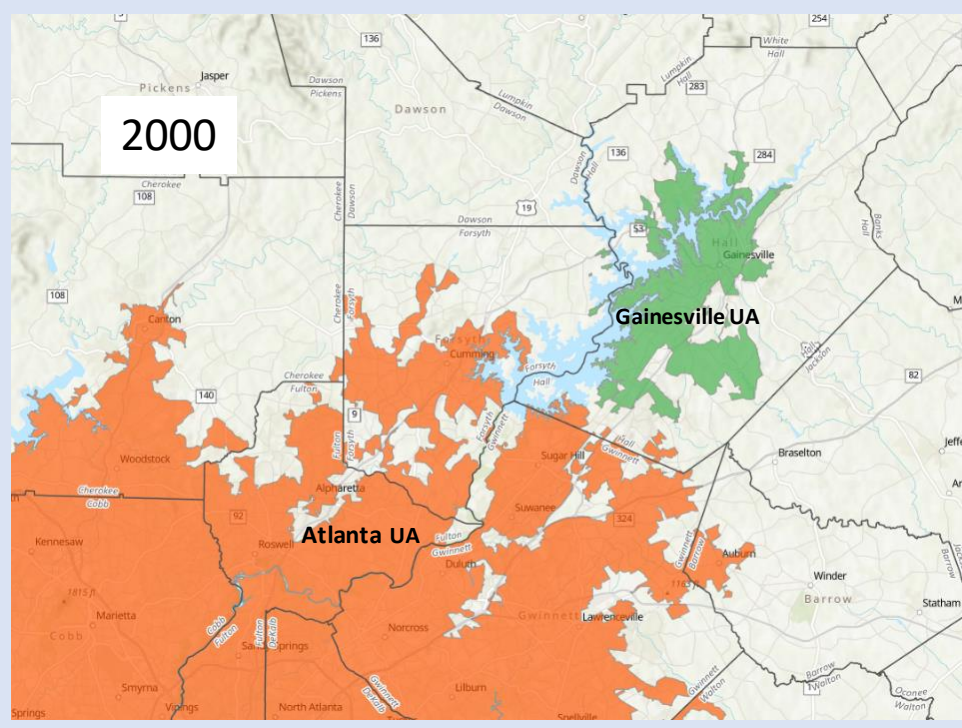


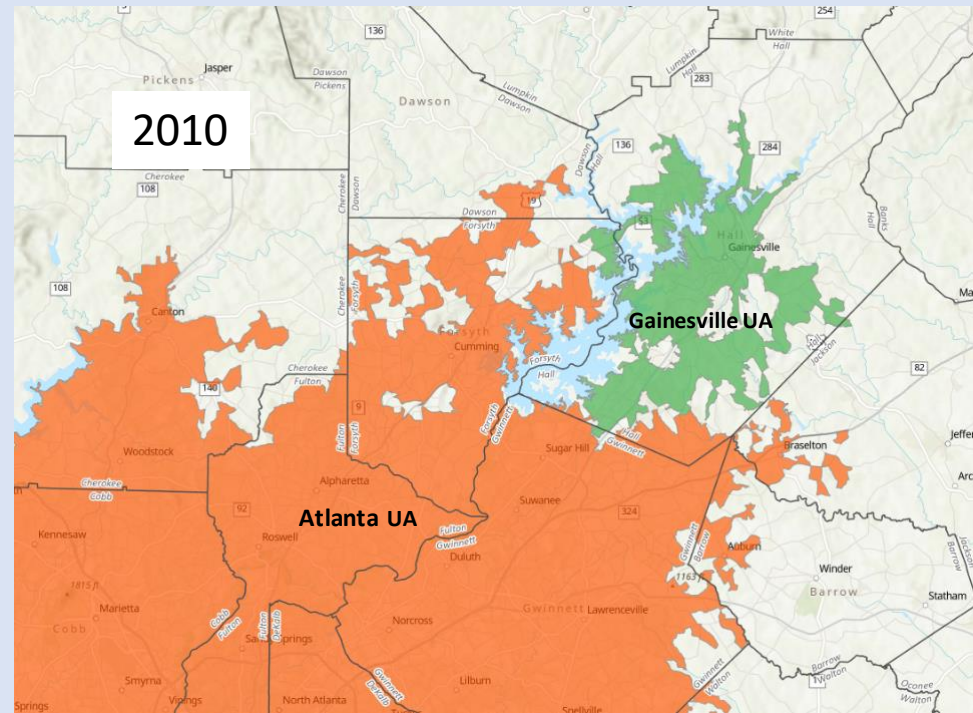
1990 (No Gainesville UA)



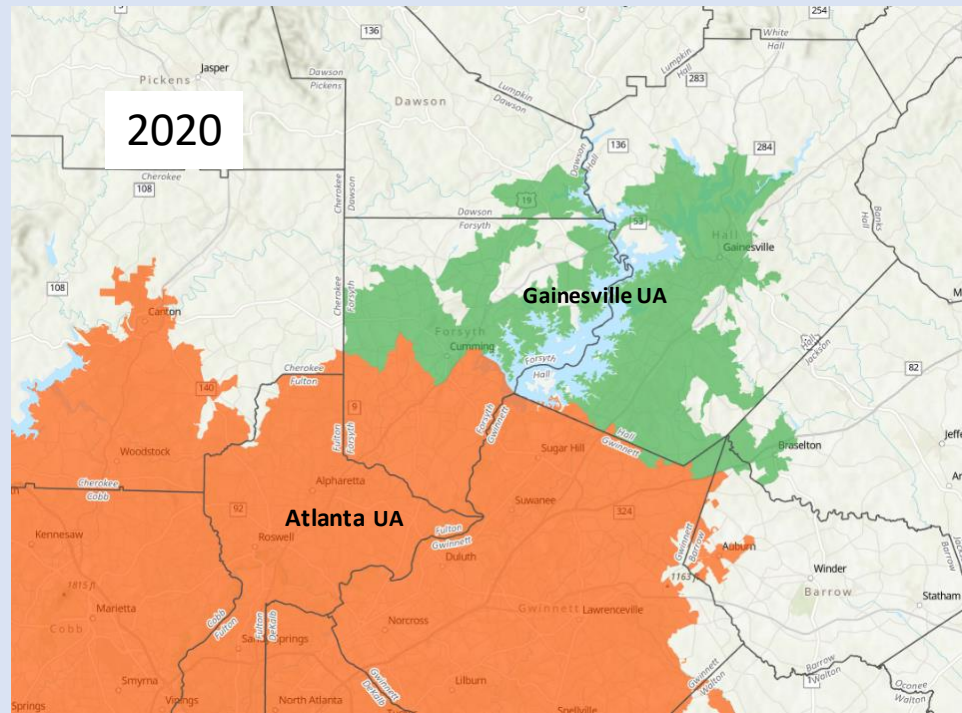
2000



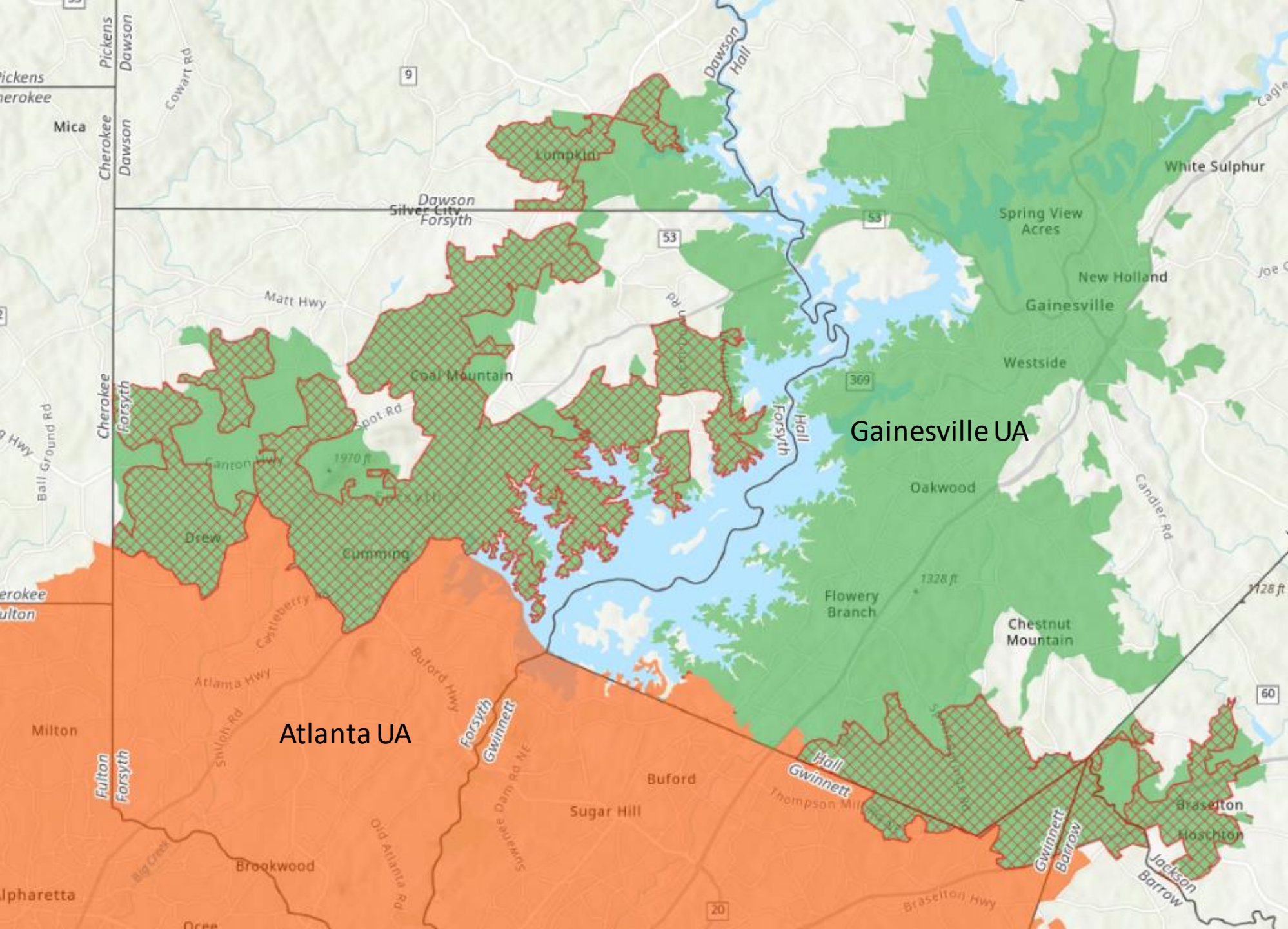
2010



2020



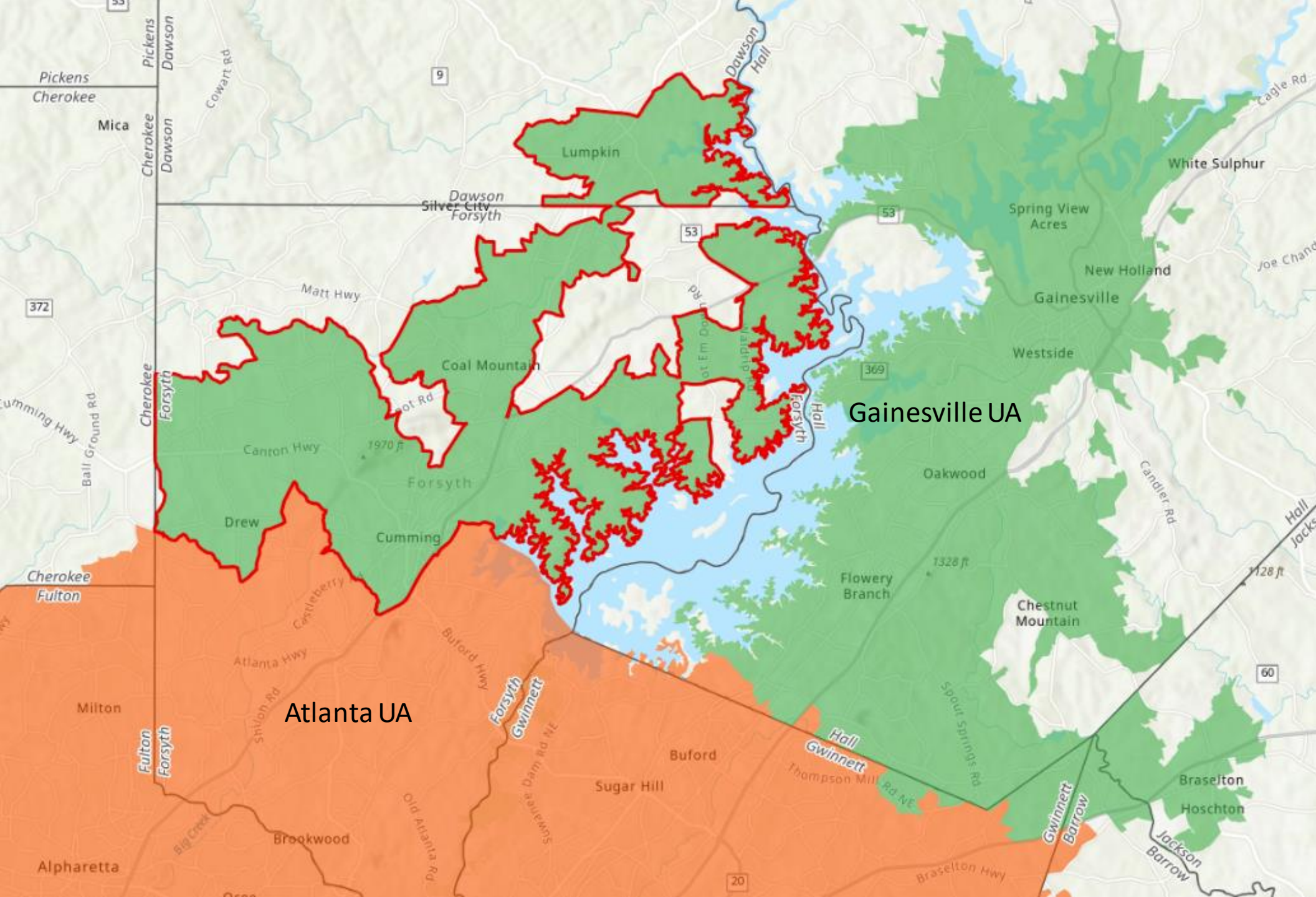
Atlanta and  
Gainesville  
Census  
Urban Areas  
1990-2020



The red hatching represents areas in the 2020 Gainesville Urban Area that were previously part of the 2010 Atlanta Urban Area.

The Gainesville UA increased by 135,132 people and 133.9 square miles from 2010-2020, 104% increases in both.

80% of the population increase and 76% of the area increase came from areas that were previously part of the 2010 Atlanta Urban Area. Approximately 55% comes from Forsyth County.



The area in question is outlined in red. This is the portion of the 2020 Gainesville Urban Area west of Lake Lanier in Forsyth and Dawson Counties. The 2020 population is 100,853 and the area is roughly 105 square miles.

Living in N. Forsyth, working in Atlanta

Map Selection Advanced Results

Save Load Feedback Previous Extent Hide Tabs Hide Chart/Report

### Paired Area Analysis

enter your own subtitle

Display Settings

Labor Market Segment Filter All Workers

Year 2019

Map Where Workers Work

Map Controls

Color Key

Thermal Overlay

Point Overlay

Selection Outline

Identify Zoom to Selection

Clear Overlays Animate Overlays

Report/Map Outputs

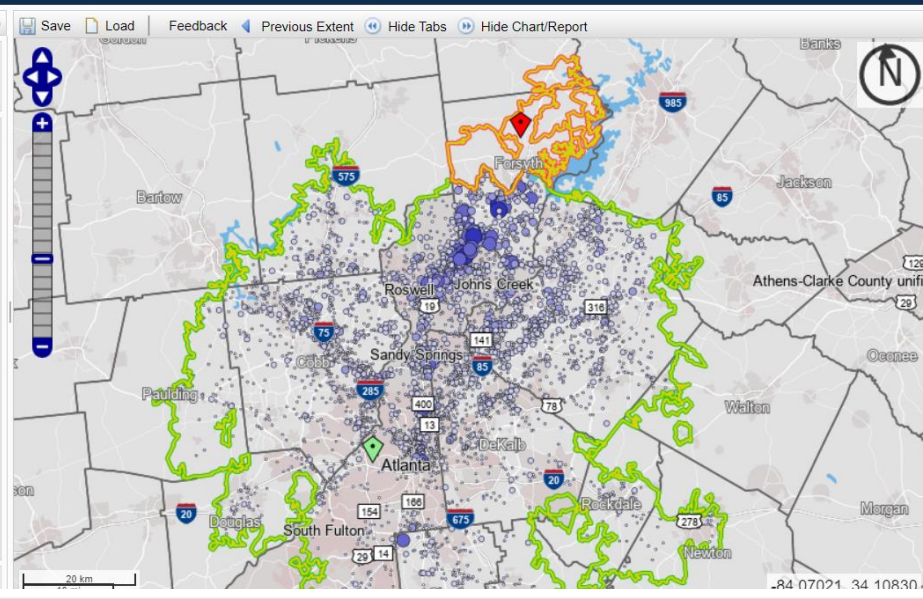
Detailed Report

Export Geography

Print Chart/Map

Legends

Change Settings



#### Job Counts by Total All Jobs for Paired Area

	2019	
	Count	Share
All Workers	29,607	100.0%

#### Job Counts by Worker Age for Paired Area

	2019	
	Count	Share
Age 29 or younger	5,686	19.2%
Age 30 to 54	17,586	59.4%
Age 55 or older	6,335	21.4%

Living in N. Forsyth, working in Gainesville

Start Base Map Selection Advanced

Save Load Feedback Previous Extent Hide Tabs Hide Chart/Report

### Paired Area Analysis

enter your own subtitle

Display Settings

Labor Market Segment Filter All Workers

Year 2019

Map Where Workers Work

Map Controls

Color Key

Thermal Overlay

Point Overlay

Selection Outline

Identify Zoom to Selection

Clear Overlays Animate Overlays

Report/Map Outputs

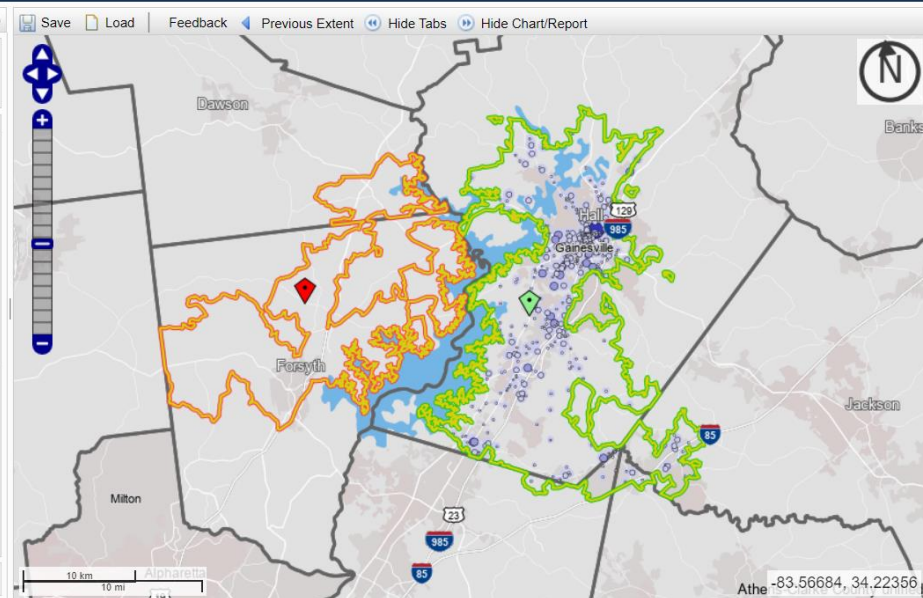
Detailed Report

Export Geography

Print Chart/Map

Legends

Change Settings



#### Job Counts by Total All Jobs for Paired Area

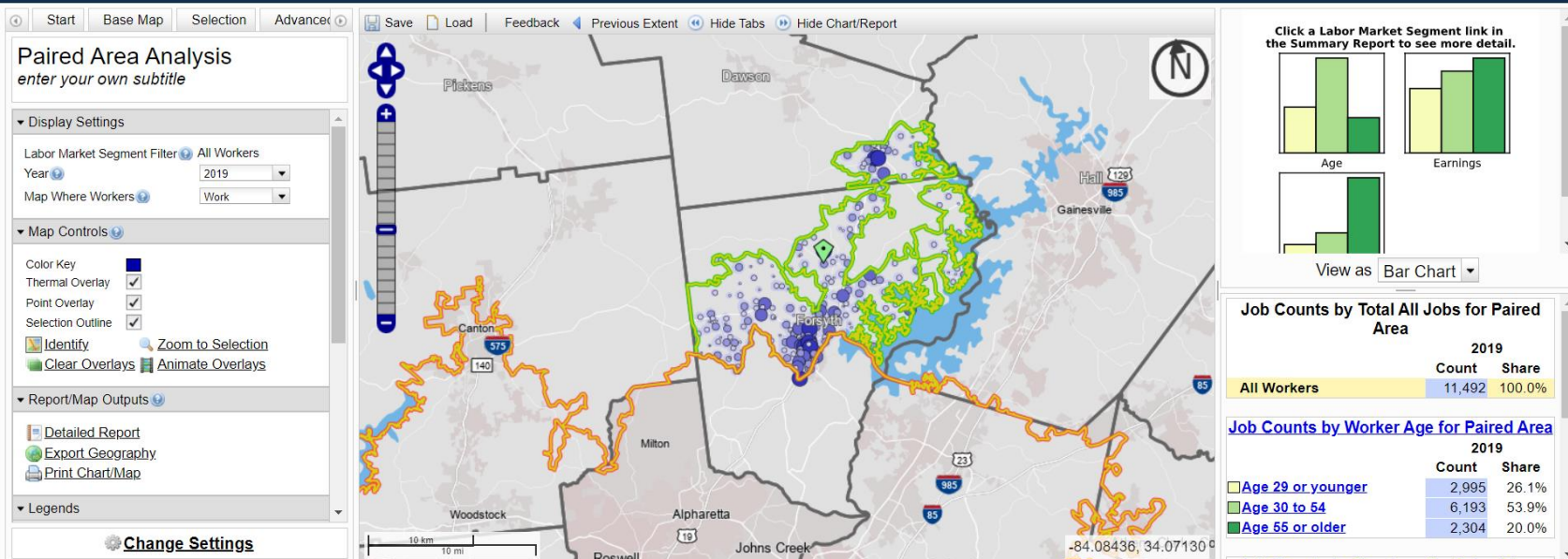
	2019	
	Count	Share
All Workers	2,190	100.0%

#### Job Counts by Worker Age for Paired Area

	2019	
	Count	Share
Age 29 or younger	478	21.8%
Age 30 to 54	1,267	57.9%
Age 55 or older	445	20.3%

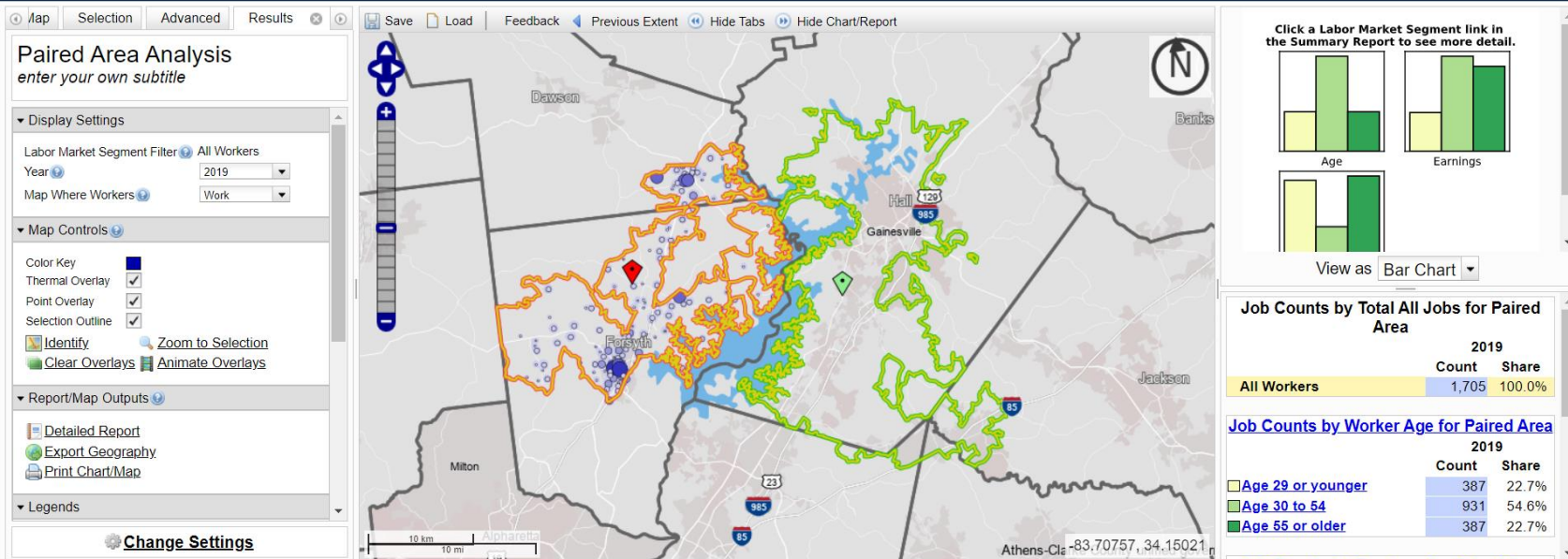
# Census On the Map Paired Area Analysis of LEHD Worker Flows from Northern Forsyth County to Atlanta and Gainesville Urban Areas

- In 2019 there were 44,487 workers living in N. Forsyth (2019 LEHD)
- 29,607 of them (67%) worked in the Atlanta UA
- 2190 of them (5%) worked in the Gainesville UA
  - Based on the 2010 UA without the new area in N. Forsyth
- 2017 and 2018 LEHD show similar numbers
- According to the Final Criteria published in the Federal Register, this is the same data (2017-2019 LEHD) used with the Leiden algorithm to split the Atlanta and Gainesville Urban Areas in 2020



# Census On the Map Paired Area Analysis of LEHD Worker Flows from Atlanta and Gainesville Urban Areas to Northern Forsyth County

- In 2019 there were 30,099 jobs in N. Forsyth (2019 LEHD)
- 11,492 of those (38%) were held by workers living in the Atlanta UA
- 1705 of them (6%) were held by workers living in the Gainesville UA
- Only 2% of the 68,757 workers living in Gainesville in 2019 worked in N. Forsyth, and only 2% of the 90,352 jobs in Gainesville were held by workers living in N. Forsyth
- 2017 and 2018 LEHD show similar numbers



Map Selection Advanced Results

Save Load Feedback Previous Extent Hide Tabs Hide Chart/Report

### Paired Area Analysis

enter your own subtitle

Display Settings

Labor Market Segment Filter: All Workers

Year: 2019

Map Where Workers: Work

Map Controls

Color Key

Thermal Overlay

Point Overlay

Selection Outline

Identify Zoom to Selection

Clear Overlays Animate Overlays

Report/Map Outputs

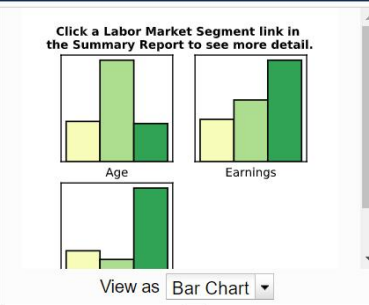
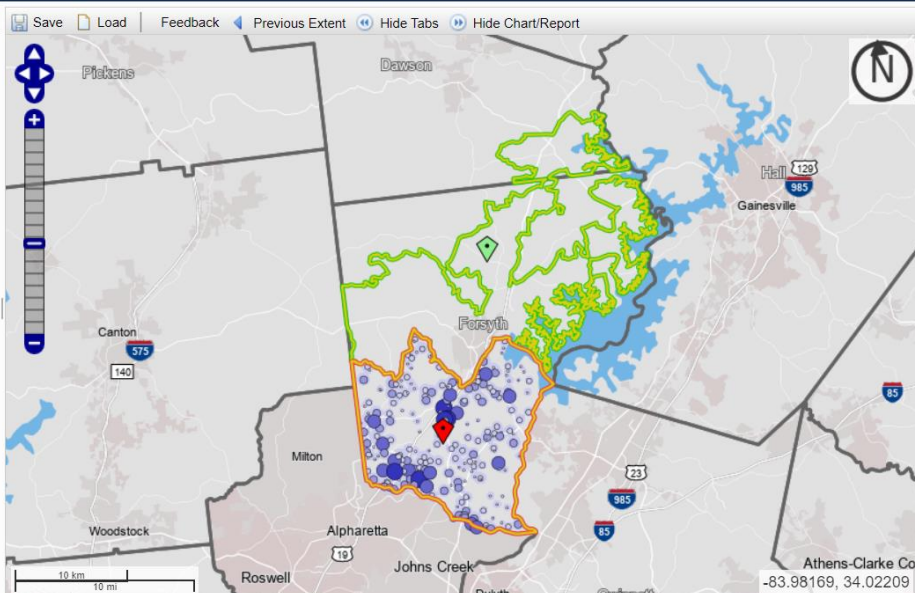
Detailed Report

Export Geography

Print Chart/Map

Legends

Change Settings



#### Job Counts by Total All Jobs for Paired Area

	2019	
	Count	Share
All Workers	5,703	100.0%

#### Job Counts by Worker Age for Paired Area

	2019	
	Count	Share
Age 29 or younger	1,276	22.4%
Age 30 to 54	3,218	56.4%
Age 55 or older	1,209	21.2%

Start Base Map Selection Advanced

Save Load Feedback Previous Extent Hide Tabs Hide Chart/Report

### Paired Area Analysis

enter your own subtitle

Display Settings

Labor Market Segment Filter: All Workers

Year: 2019

Map Where Workers: Work

Map Controls

Color Key

Thermal Overlay

Point Overlay

Selection Outline

Identify Zoom to Selection

Clear Overlays Animate Overlays

Report/Map Outputs

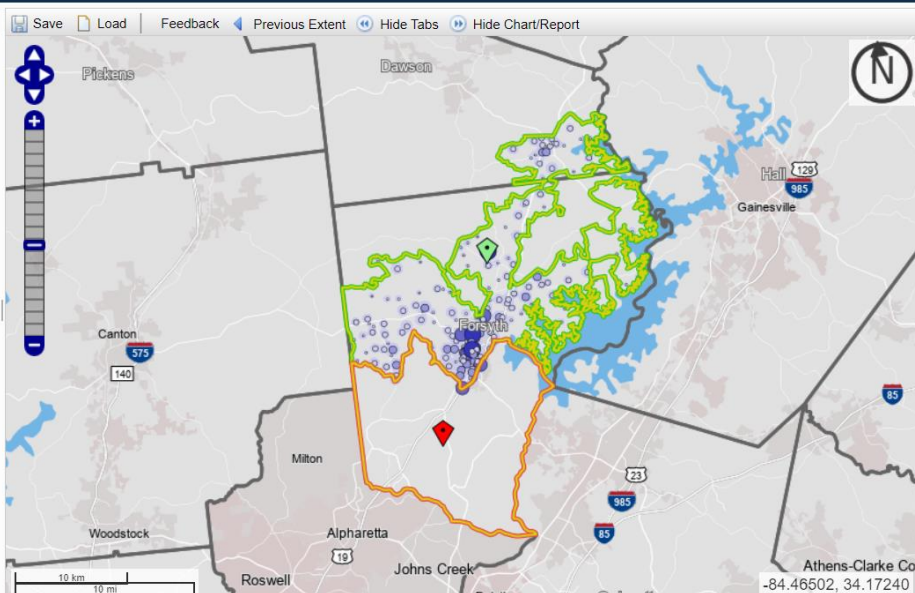
Detailed Report

Export Geography

Print Chart/Map

Legends

Change Settings



#### Job Counts by Total All Jobs for Paired Area

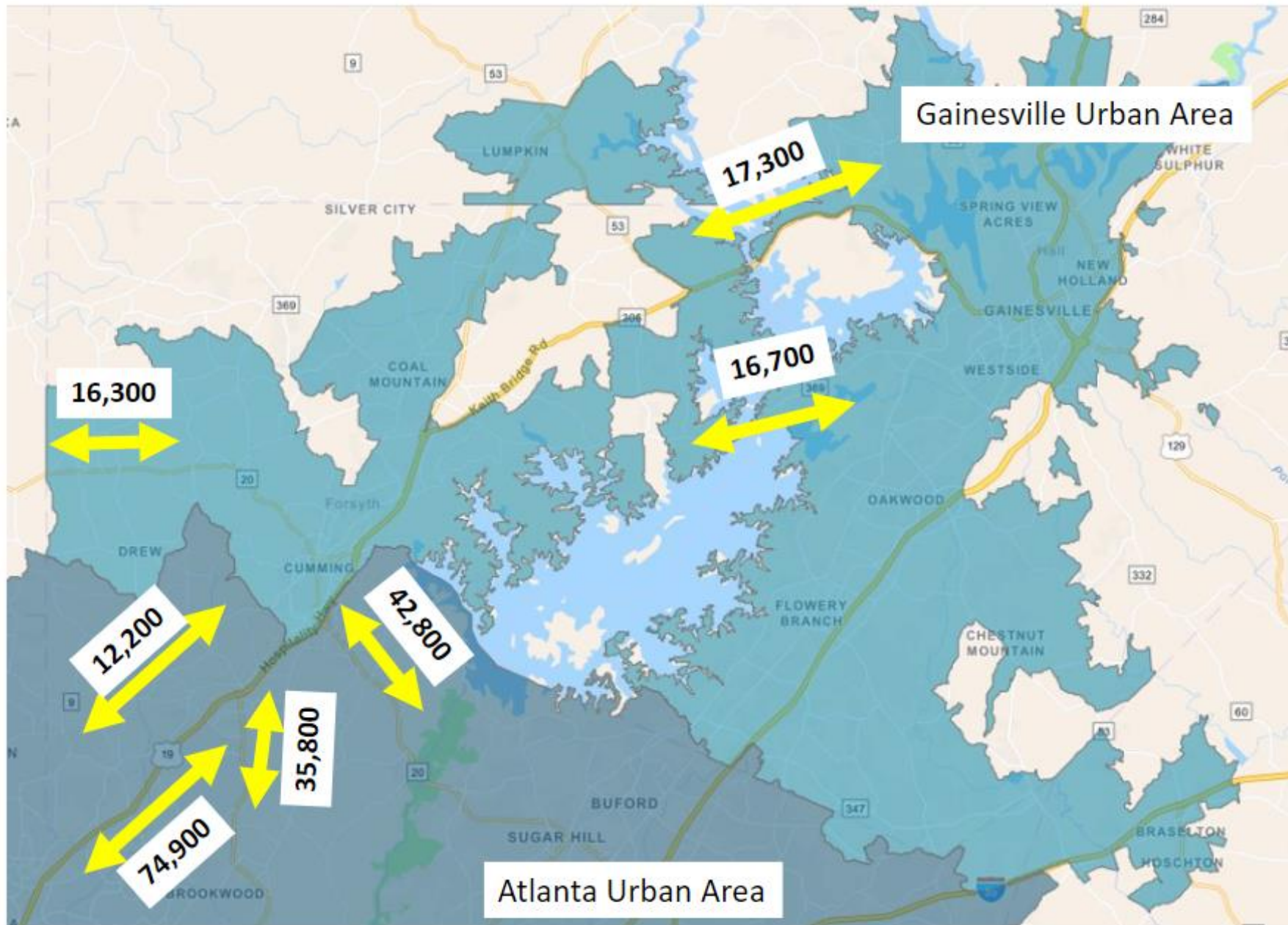
	2019	
	Count	Share
All Workers	3,332	100.0%

#### Job Counts by Worker Age for Paired Area

	2019	
	Count	Share
Age 29 or younger	632	19.0%
Age 30 to 54	1,860	55.8%
Age 55 or older	840	25.2%

# Census On the Map Paired Area Analysis of LEHD Worker Flows from Southern to Northern Forsyth County

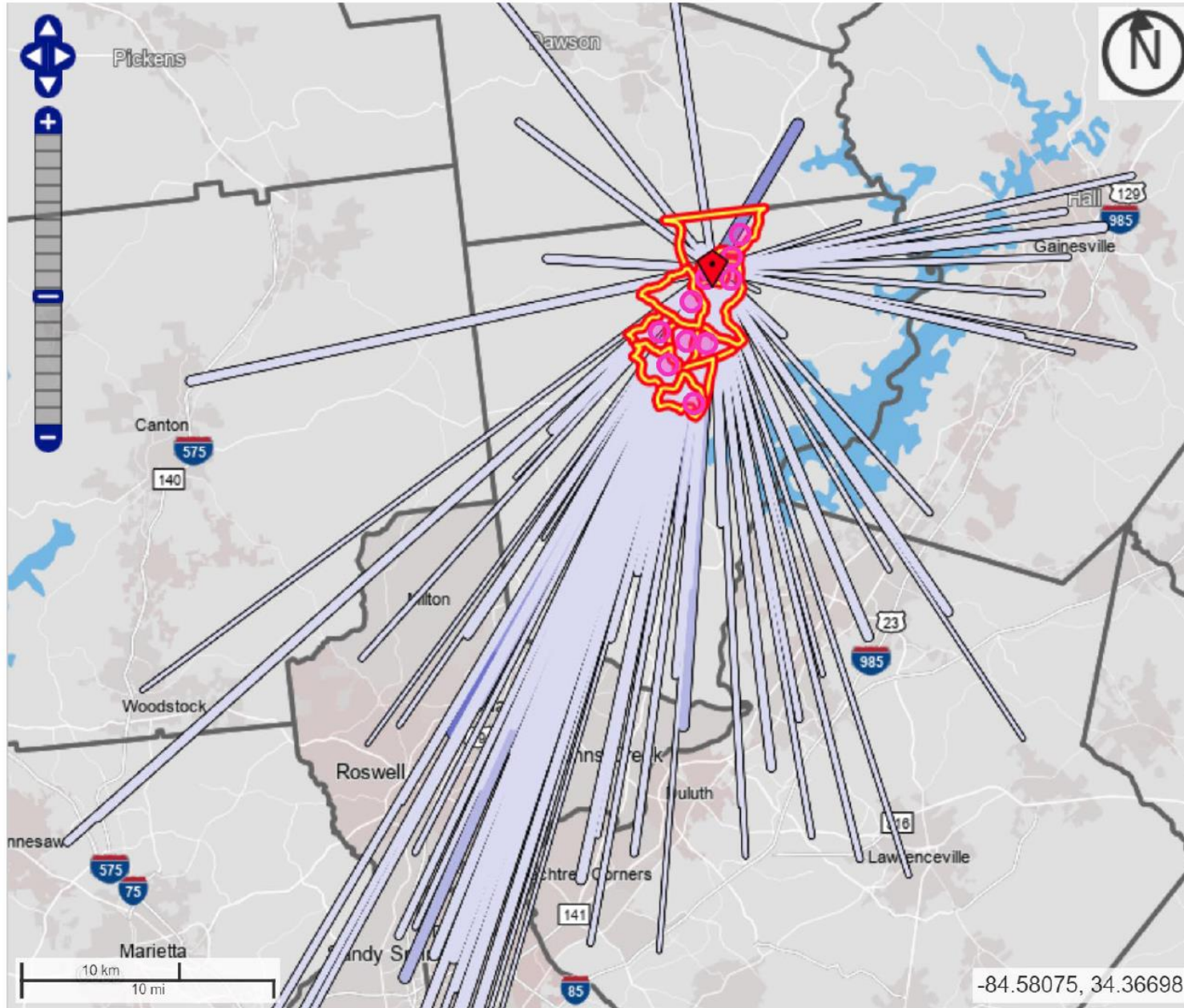
- There are roughly twice as many workers commuting between North and South Forsyth County as there are between N. Forsyth and Gainesville
- 13% of the 44,487 workers living in N. Forsyth in 2019 worked in S. Forsyth, vs 5% working in Gainesville
- 11% of the 30,099 jobs in N. Forsyth in 2019 were held by workers living in S. Forsyth, vs 6% living in Gainesville
- 2017-2018 LEHD show similar numbers



## Traffic Count Analysis as a Check on Commute Patterns...

- The majority of travel flow in Forsyth County is directed north-south, specifically with Fulton and Gwinnett Counties in the Atlanta region:
  - SR 400: 74,900 annual average daily traffic (AADT)
  - SR 20: 42,800
  - SR 141: 35,800
  - SR 20 (west): 16,300; connects the Atlanta UA east of Canton
  - SR 9: 12,200
- Gainesville-Hall County has two routes leading to Forsyth:
  - SR 53: 17,300
  - SR 369: 16,700

# Assessment of Northern Forsyth County – Resident Commute Patterns (west of SR 400)

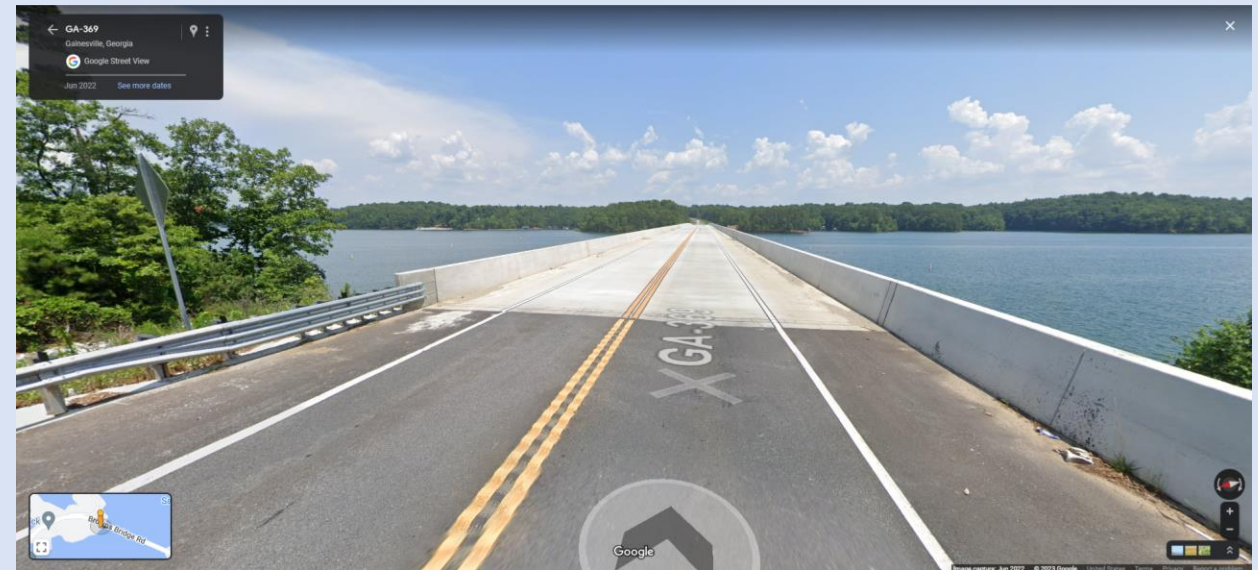


Area residents primarily commute to Forsyth, Fulton, Gwinnett, Cobb Counties. Only 5.2% of area residents commute to Hall County.

These commute patterns do not support a finding that this area has stronger relationships with the Gainesville UA vs. the Atlanta UA.

Total All Jobs		
	2019	
	Count	Share
Total All Jobs	9,348	100.0%
Jobs Counts by Counties Where Workers are Em		
	2019	
	Count	Share
Forsyth County, GA	2,691	28.8%
Fulton County, GA	2,479	26.5%
Gwinnett County, GA	1,110	11.9%
Cobb County, GA	625	6.7%
DeKalb County, GA	511	5.5%
Hall County, GA	483	5.2%
Cherokee County, GA	239	2.6%
Dawson County, GA	230	2.5%
Lumpkin County, GA	72	0.8%
Clayton County, GA	61	0.7%
All Other Locations	847	9.1%





Physical accessibility does not support Census conclusions – Lake Lanier runs the length of the Forsyth/Hall border and access between the two counties is limited to two 2-lane roads across the lake, SR 53 and SR 369 (above). Access to Atlanta is via GA 400 (6-lane limited access highway) and multiple major arterials (below).

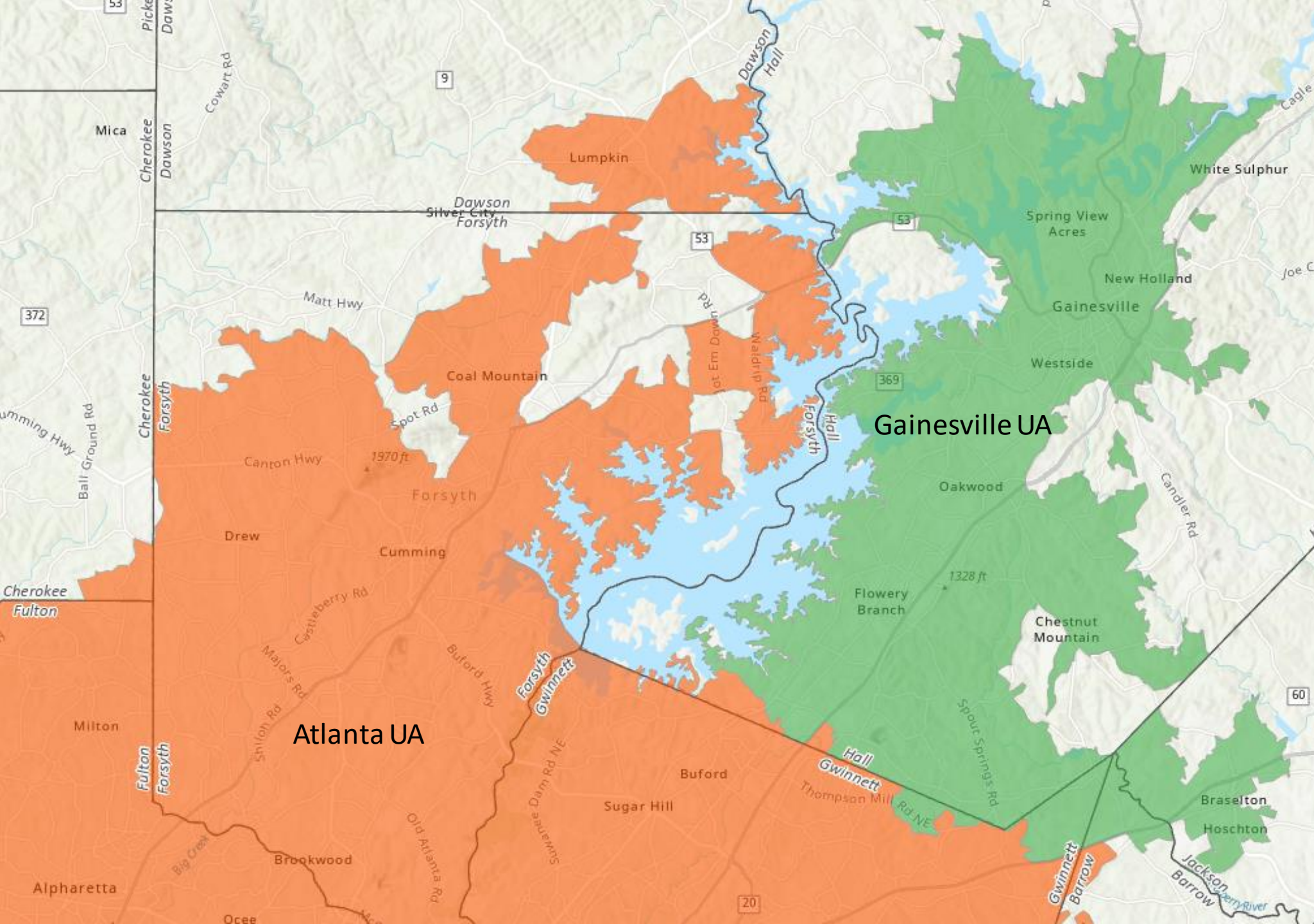


Federal Transit Administration (FTA) Grants: The FTA provides several types of funding that are apportioned based on urbanized area boundaries. These include Urbanized Area Formula Grants (Section 5307), which are for public transportation capital, planning, and operating assistance in urbanized areas. Other FTA grants, such as the Bus and Bus Facilities Program (Section 5339) and the Enhanced Mobility of Seniors and Individuals with Disabilities (Section 5310), also consider urbanized area boundaries.

Federal Highway Administration (FHWA) Funding: The FHWA provides funds for the Metropolitan Planning Program (Section 104(f)), which apportions funds based on urbanized area boundaries for carrying out the metropolitan transportation planning process.

Department of Housing and Urban Development (HUD) Programs: HUD uses urbanized area boundaries to calculate allocation for some of its programs. For instance, the Community Development Block Grant (CDBG) Program considers the size of an urbanized area for determining the allocation of funds.

Environmental Protection Agency (EPA) Grants: Certain EPA funding, such as that for water and sewage infrastructure, may also be calculated based on the population size within urbanized area boundaries.



In June of 2023, the Census Bureau acknowledged that an error had been made and in September of 2023 they published corrected boundaries for the Atlanta and Gainesville Urban Areas.