



# ATLANTA REGION'S PLAN

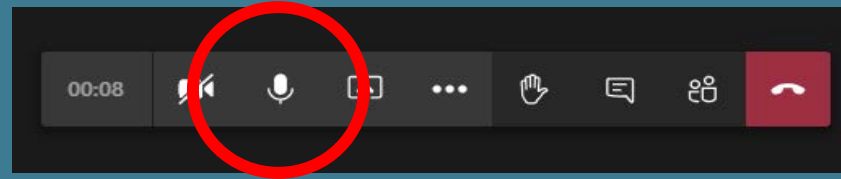
Leading Metro Atlanta Into The Future

## TIP Training – Day 2

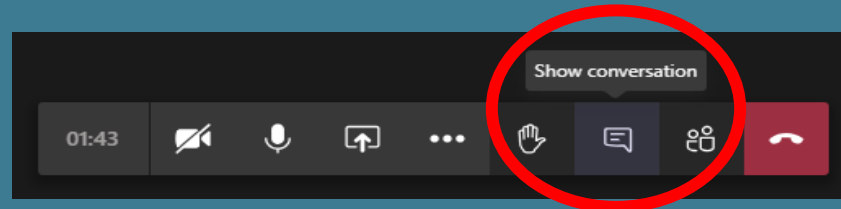
October 7, 2020

# Meeting Reminders

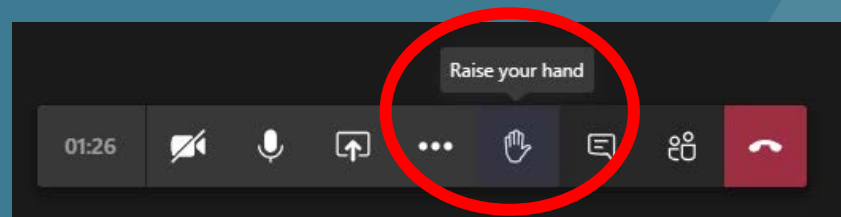
- Please put all microphones on mute



- For questions during session, feel free to use chat box



- If you would like to speak, you can use the "Raise Hand" button



# Day Two Agenda

- Welcome and Introductions
- TIP Solicitation Process
- Study Programs
  - Regional Transportation Study Program
  - LCI Studies
  - Freight Cluster Plans
  - CTP Program
- Study Contracts/Procurement





# THE ATLANTA REGION'S PLAN

Leading Metro Atlanta Into The Future

TIP Solicitation Process |

# Day Two Agenda

- Welcome and Introductions
- TIP Solicitation Process
- Study Programs
  - Regional Transportation Study Program
  - LCI Studies
  - Freight Cluster Plans
  - CTP Program
- Study Contracts/Procurement

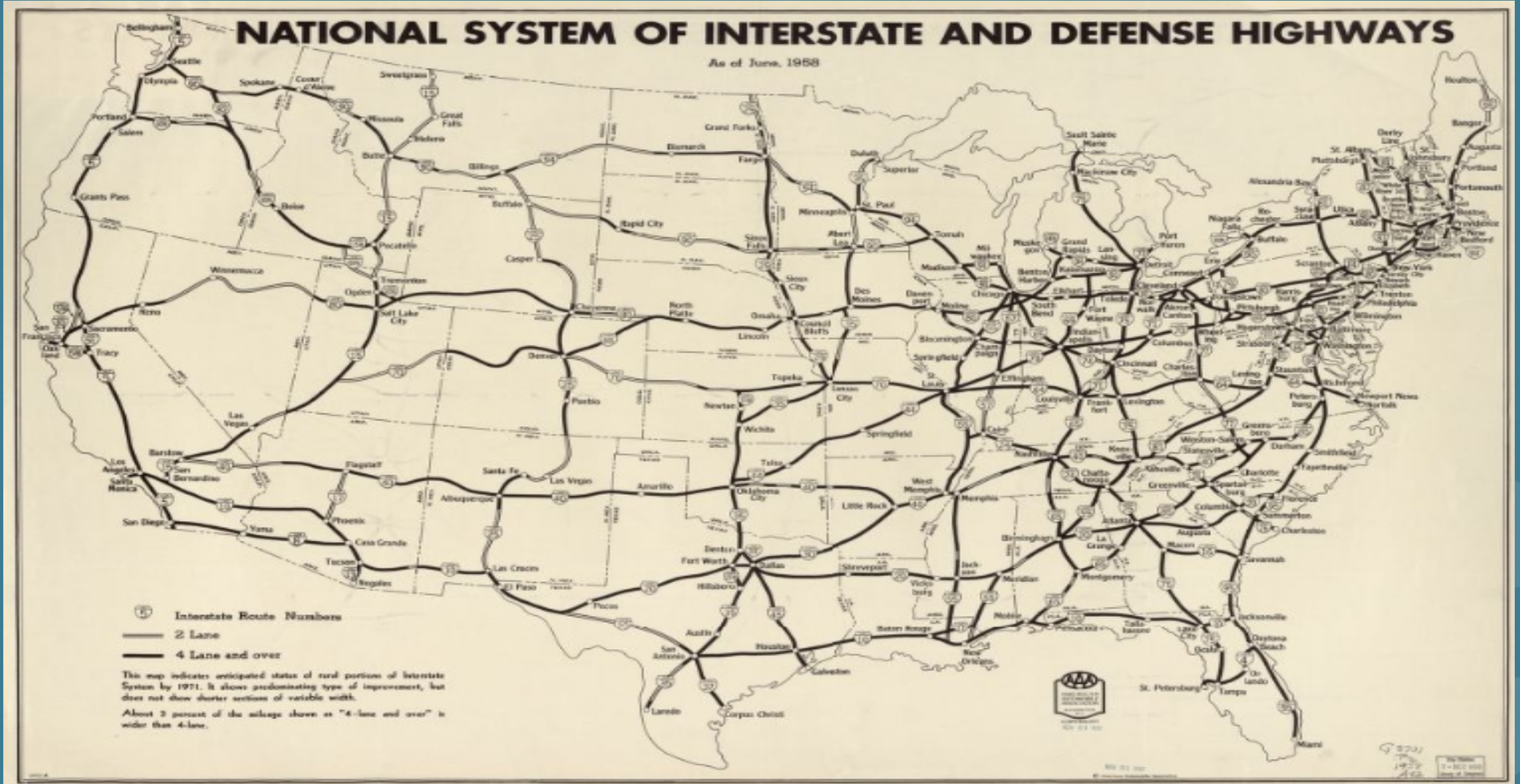


# Introduction





# 1956 Federal Aid Highway Act





# Highway Trust Fund





# Federal Transportation Funding Process

- Congress passes a multi-year spending bill for Trust Fund proceeds; authorizes funding from bill to federal agencies each year through appropriations
- Federal agency (DOT) authorizes annual spending amounts for individual states, MPOs, etc.
- Apportioned funds dispensed by programs which support the goals of the multi-year spending bill



Authorization  
Legislation and  
Appropriations

Apportionment

Programs

# FHWA/FTA Program Dispersal

FHWA/FTA

```
graph TD; FHWA[FHWA/FTA] --> MPO[MPO]; FHWA --> StateDOT[State DOT]; FHWA --> Transit[Transit Agencies];
```

- Surface Transportation Block Grant Program
  - Transportation Alternatives Set-Aside
- Congestion Mitigation & Air Quality Program
- National Highway Performance Program
- Transit Formula Programs (5307, 5339, etc.)
- Others

MPO

State DOT

Transit  
Agencies

# What is a TIP Solicitation?

- TIP Solicitation – An open call for transportation project proposals to be funded from one of the FHWA programs that ARC has programming authority over
- Open to eligible state agencies, counties, cities, community improvement districts (CIDs), etc.
- Applications evaluated by staff and approved by MPO policy body (TAQC)
- Competitive evaluation process; allows staff to identify and support projects which are consistent with and directly implement the policy goals of the Atlanta Region's Plan
  - 23 U.S.C. § 134(j)



# RTP Policy Framework

THE ATLANTA  
REGION'S  
**PLAN**

**August 2015**

**THE REGION'S PLAN  
POLICY FRAMEWORK**

[www.atlantaregionsplan.org](http://www.atlantaregionsplan.org)

**ARC**

ATLANTA REGIONAL COMMISSION



# GOAL:

ENSURING A COMPREHENSIVE TRANSPORTATION NETWORK,  
INCORPORATING REGIONAL TRANSIT AND 21<sup>ST</sup> CENTURY TECHNOLOGY

## **Maintain and operate the existing transportation system to provide for reliable travel**

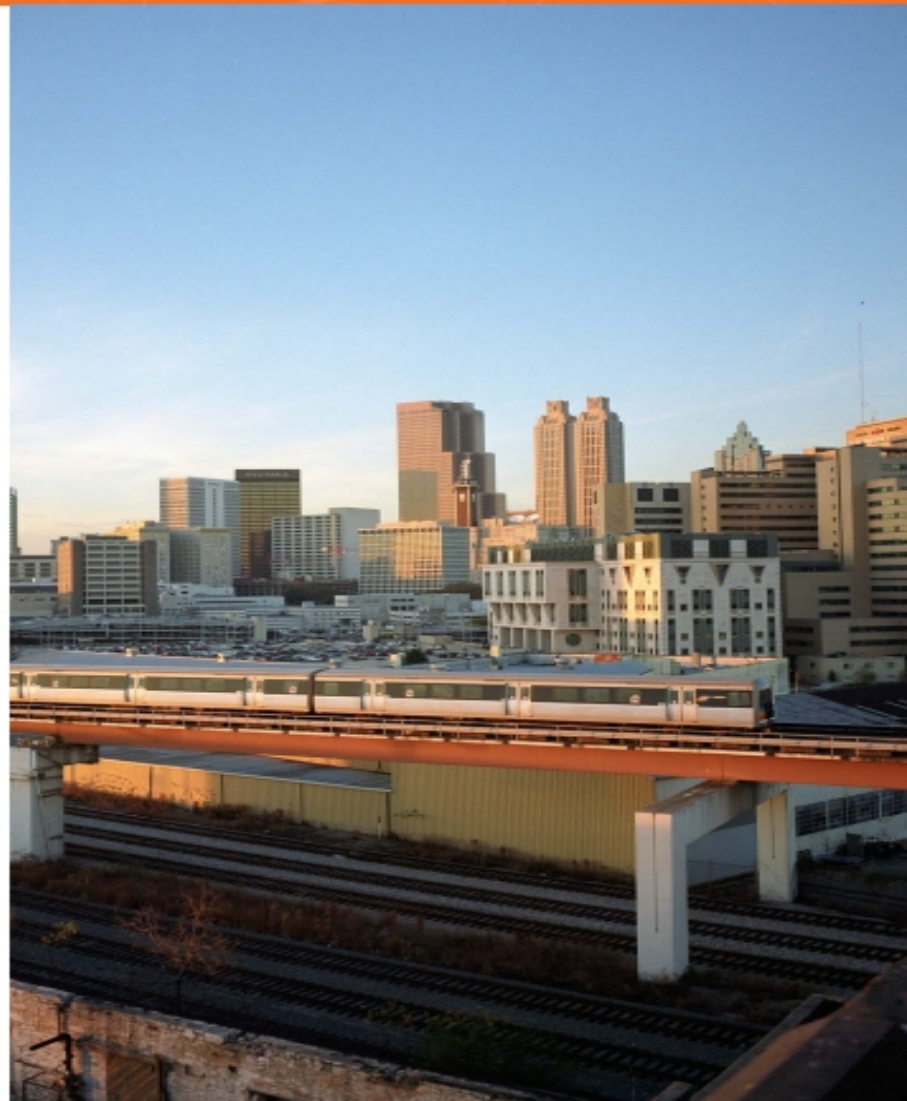
It is vital that the region focuses resources on maintaining and operating the existing transportation system before allocating resources to expand the current system. The Region's Plan prioritizes the maintenance of our transportation system while promoting trip reliability and system resiliency in the future.

## **Improve transit and non-single occupant vehicle options to boost economic competitiveness and reduce environmental impacts**

71% of Metro Atlanta Speaks regional survey respondents said that improved public transportation is very important for the future. Transit provides people with travel options, serves as the main source of transportation for thousands of residents, helps mitigate congestion and improves air quality. For existing and emerging centers, The Region's Plan policies prioritize transit expansion projects in areas with transit-supportive land use and regulations to ensure implementation of transit in the region.

## **Strategically expand the transportation system while supporting local land use plans**

When applicable based on a community's unique context, roadway expansions should be implemented as complete streets to accommodate people driving, riding transit, walking and bicycling. The expansion of roadways into rural areas should emphasize facilities that support economic competitiveness by improving multimodal connectivity between centers or by addressing critical safety needs.



# TIP Evaluation Framework

- TIP Evaluation Framework outlines how projects are appraised for their accordance with RTP Policy Framework and comparative performance across applications
- Offers a transparent view of how project proposals are graded by ARC staff
- Organized around a Key Decision Point (KDP) structure
- Available at [www.atlantaregional.org/tipsolicitation](http://www.atlantaregional.org/tipsolicitation)

## THE ARC TIP PROJECT EVALUATION FRAMEWORK

"The Project Evaluation Cookbook"

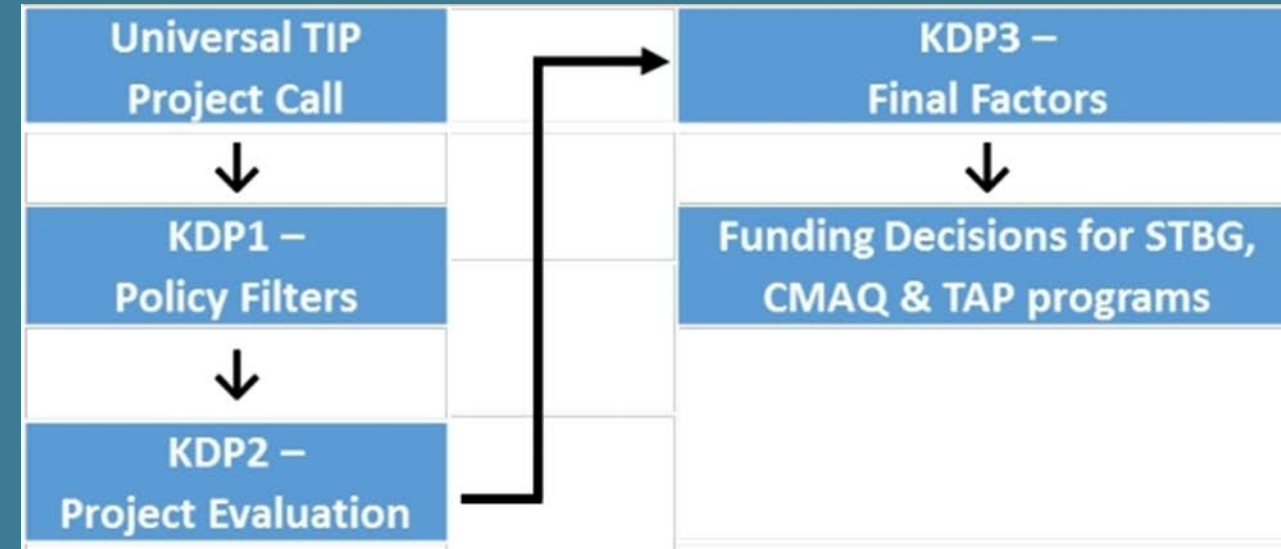
Atlanta Regional  
Commission

Revised  
August 2019



# TIP Project Evaluation Process

- ARC opens a universal call for project proposals
- Most responses collected through an application (though some may be submitted through PLANIT TIP project database)
- Applications run through KDPs
  - KDP 1 - Filters applications not accordant with RTP Policy Framework
  - KDP 2 - Measures performance by criteria aligned with RTP Policy Framework
  - KDP 3 - Applies final factors (applicant priority, cost effectiveness, regional equity and project deliverability)



# KDP 1 – Policy Filters

Policy Filter Language	
General Filters for Infrastructure Expansion or Maintenance	Project must originate from a locally adopted plan
	Sponsors must have Qualified Local Government (QLG) status current or pending
	New projects must originate from, or be supported by, a government with a demonstrated capacity to implement federal aid projects with on-time delivery of ARC regional program funded phases over the last three fiscal years of at least 60% <sup>1</sup>
	Projects on the state system will not be considered without a letter of support from the sponsor's GDOT District Office and the GDOT Office of Program Delivery
Roadway Capacity Filters	Project must be federal aid eligible
	Project must be located on a regional or national priority transportation network
	Project must include complete street elements that are context sensitive to the existing community and safety measures that reduce risks for all roadway users
	Projects in rural areas, as designated by the UPGM <sup>2</sup> , must connect two or more regional places <sup>2</sup>
Transit Capacity Filters	Rail and BRT capacity projects must be a part of the Concept 3 transit vision and the ATL Authority transit plan <sup>3</sup>
	Project must demonstrate a firm financial package
	Project must connect to an existing public transit service or regional center

# KDP 2 – Project Evaluation

- KDP 2 applies 12 Policy Framework-referenced performance criterion across 8 distinct application categories
- Based on data sourced by staff and individual applicants
- All criteria specifics outlined in TIP Evaluation Framework

Atlanta Region's Plan Vision	Performance Criteria	Project Types							
		Bicycle and Pedestrian	Trail	Roadway Asset Management & Resiliency	Roadway Expansion	Roadway Transportation Systems Management & Operations	Transit Expansion	Transit Asset Management and System Upgrades	Misc. Emissions Related Projects
World Class Infrastructure	Mobility & Congestion	✓	✓	✓	✓	✓	✓	✓	
	Reliability				✓	✓	✓		
	Network Connectivity	✓	✓	✓	✓	✓	✓		
	Multimodalism	✓	✓	✓	✓	✓	✓		
	Asset Management & Resiliency	✓ <sup>4</sup>	✓ <sup>4</sup>	✓	✓ <sup>4</sup>	✓ <sup>4</sup>	✓ <sup>4</sup>	✓	
Healthy Livable Communities	Safety	✓	✓	✓	✓	✓	✓	✓	
	Air Quality & Climate Change	✓	✓		✓	✓	✓	✓ <sup>5</sup>	✓
	Cultural & Environmental Resources	✓	✓	✓	✓	✓	✓	✓	
	Social Equity	✓	✓	✓	✓	✓	✓	✓	
	Land Use Compatibility	✓	✓				✓		
Competitive Economy	Goods Movement			✓	✓	✓			
	Employment Accessibility	✓	✓	✓	✓	✓	✓	✓	



# KDP 2.1 – LCI Project Evaluation

Projects with at least 50% of project limits within approved LCI districts will be evaluated on LCI criteria in addition to KDP 2 criteria. LCI criteria:

LCI Criterion	Measure	Points
<b>LCI Plan Implementation</b>	Affordable housing ordinance	10 pts
	Mixed-use and multi-family zoning permitted	10 pts
	Walkable community design regs, sidewalk ordinance, hist. pres. district	5 pts
<b>Complete Streets</b>	Provides bicycle and pedestrian facilities	0-15 (range based on separation, quality)
	Safety Countermeasures	0-15 (range based on quality and # of features)
<b>Innovation &amp; Quality of Scope</b>	Green stormwater management infrastructure	10 pts
	Smart technology	5 pts
<b>Transit Access or TOD</b>	TOD project or provides bike/ped facilities within 1 mile of bus or rail stop	0-15 pts (range based on distance from transit)
<b>Social Equity</b>	Moderate to Highest concentration of racial/ethnic minorities and low-income populations based on ARC's Equity mapping tool.	0-15 (graduated, based on concentration)
	Not in EJ area, but project serves low-income or subsidized housing as identified on HUD subsidy property database	10 points (in lieu of above criterion, not added to it)

# KDP 3 - Final Factors

- Project priority as disclosed in project application
- Cost effectiveness derived from KDP 2 performance and project cost estimate
- Project deliverability surmised from application deliverability assessment
- Regional equity informed by geographic distribution

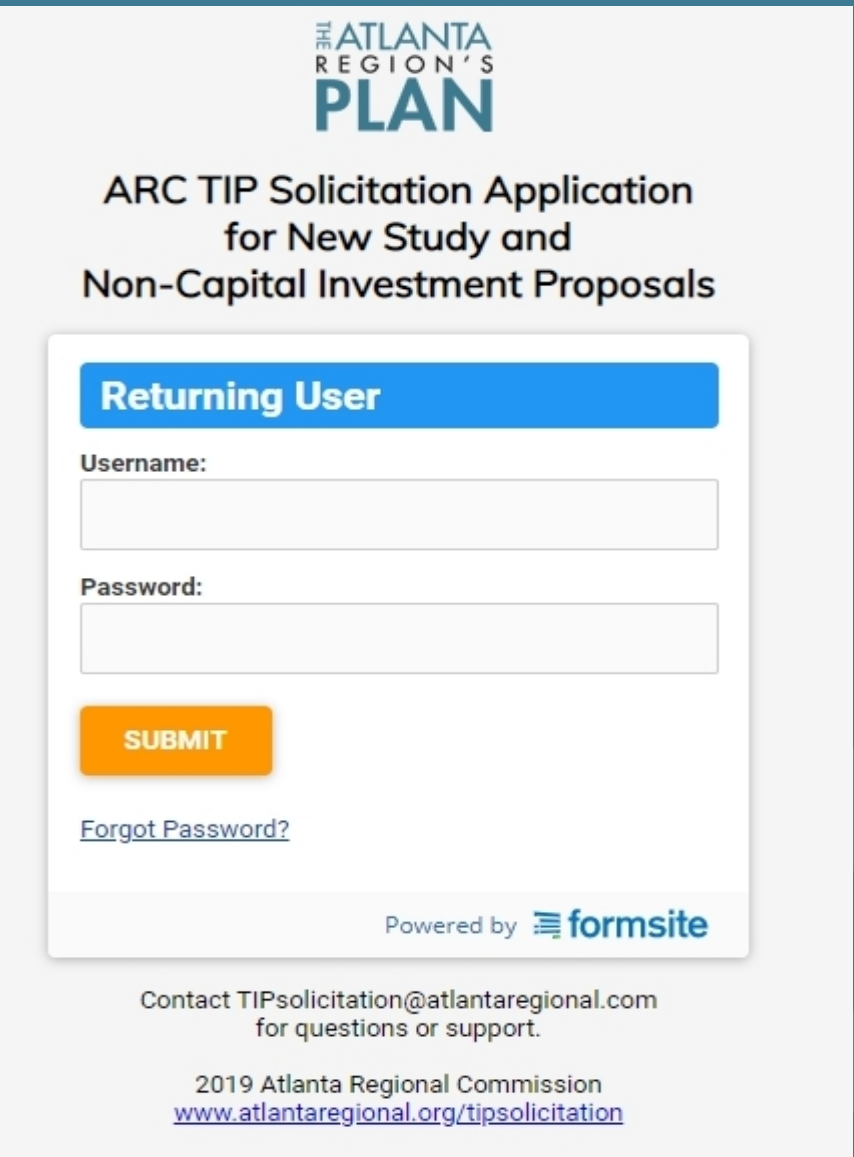
# Funding Recommendations

- Staff utilize project evaluation findings to craft a draft set of recommendations
  - Applications may be fully funded as requested, partially funded, converted into a scoping study or passed for funding
- Due diligence with sponsors, elected officials, TCC/TAQC and ARC executive team follow
- Recommendations finalized and published
  - Assigned to various TIP incorporation tracks (Amendment or Administrative Modification)



# TIP Solicitation Application Process

- Application window opens approximately every 2 years
- Application windows typically supported by ARC staff through open house events
- Application is online; allows applicants to save progress and return
  - In select cases a sponsor may participate directly through PLANIT
- Application designed to assist applicants submit a competitive application



The screenshot shows a web form titled "ARC TIP Solicitation Application for New Study and Non-Capital Investment Proposals". At the top is the logo for "THE ATLANTA REGION'S PLAN". Below the title is a blue button labeled "Returning User". Under this button are two input fields: "Username:" and "Password:". Below the password field is an orange "SUBMIT" button. A link for "Forgot Password?" is located below the submit button. At the bottom of the form area, it says "Powered by formsite". Below the form area, contact information is provided: "Contact TIPsolicitation@atlantaregional.com for questions or support." and the footer includes "2019 Atlanta Regional Commission" and the URL "www.atlantaregional.org/tipsolicitation".

THE ATLANTA  
REGION'S  
PLAN

ARC TIP Solicitation Application  
for New Study and  
Non-Capital Investment Proposals

**Returning User**

Username:

Password:

**SUBMIT**

[Forgot Password?](#)

Powered by **formsite**

Contact [TIPsolicitation@atlantaregional.com](mailto:TIPsolicitation@atlantaregional.com)  
for questions or support.

2019 Atlanta Regional Commission  
[www.atlantaregional.org/tipsolicitation](http://www.atlantaregional.org/tipsolicitation)

# TIP Solicitation Page

- All resources pertaining to TIP solicitations are hosted at [www.atlantaregional.org/tipsolicitation](http://www.atlantaregional.org/tipsolicitation)
- Includes:
  - Application portal login
  - Solicitation dates and milestones
  - Supporting resources to help craft a competitive application
  - Award announcements and previous
  - A summary of received applications
  - Previous solicitation awards

The screenshot shows the ARC website's 'TIP Project Solicitations' page. The header includes the ARC logo and navigation links for 'BROWSE BY TOPIC' and 'BROWSE BY T'. The main heading is 'TIP Project Solicitations'. Below this, a 'POSTED IN: TRANSPORTATION & MOBILITY' tag is visible. The text describes a solicitation for TIP project funding proposals during the summer of 2019, mentioning federal funding from the Surface Transportation Block Grant Program (STBG) and the Congestion Mitigation and Air Quality (CMAQ) program. It also states that sponsors may apply for federal funding to add new projects to the TIP. The page is divided into two main sections: '2019 TIP Solicitation – Recommendations' and '2019 TIP Solicitation – Applications Received'. The 'Recommendations' section lists links for STBG, TAP, CMAQ, and the 2019 TIP Solicitation Recommendations Report. The 'Applications Received' section mentions that the application window closed on October 11th, 2019, and provides a link to download a zip archive of applications. A 'Solicitation Schedule and Milestones' section lists key dates: initial recommendations in late May 2020, final recommendations TBD, and the ARC Committee and Board adoption of future Amendment 1 (conformity project award track) in FY 2020-2025. The page concludes with a 'Key Supporting Resources' section.

**ARC ATLANTA REGIONAL COMMISSION** BROWSE BY TOPIC BROWSE BY T

## TIP Project Solicitations

POSTED IN: **TRANSPORTATION & MOBILITY**

The Atlanta Regional Commission will hold a solicitation for TIP project funding proposals during the summer of 2019. Federal funding from the Surface Transportation Block Grant Program (STBG), which includes the setaside for Transportation Alternatives, ARC's Livable Centers Initiative (LCI) program, and the Congestion Mitigation and Air Quality (CMAQ) program will be awarded to implement projects which support the goals and objectives of the Atlanta Region's Plan.

Sponsors may apply for federal funding to add new projects to the TIP, supplement funding for existing TIP projects and submit proposals for studies and related initiatives which do not result in the construction of physical infrastructure.

### 2019 TIP Solicitation – Recommendations

Initial staff funding recommendations for the 2019 TIP solicitation may be found below, organized by federal program funding category. At this time all recommendations are limited to FY 2021:

- [Surface Transportation Block Grant \(STBG\) program funding recommendations](#)
- [STBG-funded study recommendations](#)
- [Transportation Alternatives Program \(TAP\) setaside funding recommendations](#)
- [Congestion Mitigation and Air Quality \(CMAQ\) program funding recommendations](#)
- [2019 TIP Solicitation Recommendations Report](#)

### 2019 TIP Solicitation – Applications Received

The application window for the 2019 TIP solicitation closed on October 11th, 2019. ARC staff are now in the process of evaluating all applications received, per the procedures outlined in the [TIP Project Evaluation Framework](#) document. A zip archive of applications received (for both study and infrastructure proposals) may be downloaded below:

- [Application summaries and spreadsheet](#)

### Solicitation Schedule and Milestones (*Dates are subject to change*)

- Initial recommendations – late May 2020
- Final recommendations – TBD
- ARC Committee and Board adoption of future Amendment 1 (*conformity project award track*) – See [FY 2020-2025 TIP Amendment #1 Schedule](#)

### Key Supporting Resources

# Important Closing Items

- Funds programmed by ARC through the TIP solicitation process are made to a specific project, project activity and fiscal year - NOT a project sponsor
- MPO funding is a **partnership** between the sponsor and MPO
- Keeping a project on schedule is critical as MPO funding availability in future TIP years fluctuates each quarter
- Unusual changes in project scope/schedule/budget can impact ARC support





# THE ATLANTA REGION'S PLAN

Leading Metro Atlanta Into The Future

Studies and Contracts |

# Day Two Agenda

- Welcome and Introductions
- TIP Solicitation Process
- Study Programs
  - Regional Transportation Study Program
  - LCI Studies
  - Freight Cluster Plans
  - CTP Program
- Study Contracts/Procurement

# Study Programs

- Regional Transportation Study Program
- LCI Studies
- Freight Cluster Plans
- Comprehensive Transportation Plan (CTP) Program





# Regional Transportation Study Plan (RTSP)

The Regional Transportation Planning Study (RTPS) program provides local governments and Community Improvement Districts funds for transportation plans, corridor studies and feasibility studies that support the goals and objectives of the Atlanta Region's Plan. The purpose of these is to develop project concepts that improve safety, mobility and access to all roadway users, while also preparing them for advancement to Scoping and/or PE phases (in future TIP project solicitations).

# Regional Transportation Study Plan (RTSP)

Funding for transportation studies helps to determine viable TIP projects. Typical study types include:

- Planning study identifies transportation issues and provides improvement options
- Feasibility are used to determine if a recommended approach to a transportation issues is feasible.
- Scoping study identifies and explores the initial parameters of a transportation project. Required before funding is awarded for expansion project.

# Regional Transportation Study Plan (RTSP)

Fiscal Year	Sponsor	Study Name	ARC/Federal Award	Local Match	Total
2020	Barrow County	SR316 Access Management Plan Study	\$280,000	\$70,000	\$350,000
2020	ADID/Central Atlanta Progress	Atlanta Central Business District Curb Management Plan	\$ 240,000	\$60,000	\$300,000
2020	Cobb County	Cobb Parkway (US 41/SR3) at Windy Hill Road Grade Separation	\$320,000	\$80,000	\$400,000
2020	Coweta County	Southwest Bypass (Phase 1) Scoping Study	\$320,000	\$80,000	\$400,000
2020	DeKalb County	North Druid Hills Scoping Study	\$320,000	\$80,000	\$400,000
2020	City of Sandy Springs	SR 9/Roswell Road Access Management Study	\$320,000	\$80,000	\$400,000
2020	Paulding County	SR 6 Planning / Scoping study	\$200,000	\$50,000	\$250,000
2020	City of Loganville	Loganville Traffic Circulation Study	\$240,000	\$60,000	\$300,000
2021	City of Atlanta	Atlanta Vision Zero Plan	\$400,000	\$100,000	\$500,000
2021	Cobb County	Austell-Powder Springs Trail Study	\$240,000	\$60,000	\$300,000
2021	Cobb County	Noonday Creek Trail Extension Scoping Study	\$240,000	\$60,000	\$300,000
2021	DeKalb County	South River Multiuse Trail Extension Scoping Study	\$200,000	\$50,000	\$250,000
2021	City of Doraville	Shallowford Road Project Scoping Study	\$80,000	\$20,000	\$100,000
2021	City of Fayetteville	People to Parks Connectivity study	\$200,000	\$50,000	\$250,000
2021	Gwinnett County	Piedmont Pathway Trail Study	\$240,000	\$60,000	\$300,000
2021	City of Stockbridge	Stockbridge Downtown Ped. and Bicycle Connectivity Study	\$100,000	\$25,000	\$125,000
2021	DeKalb County	Redan Road Scoping Study	\$320,000	\$80,000	\$400,000
2021	City of Dallas	Dallas Trail, Phase 3 - Silver Comet Connection	\$80,000	\$20,000	\$100,000



# RTSP- ARC's Role

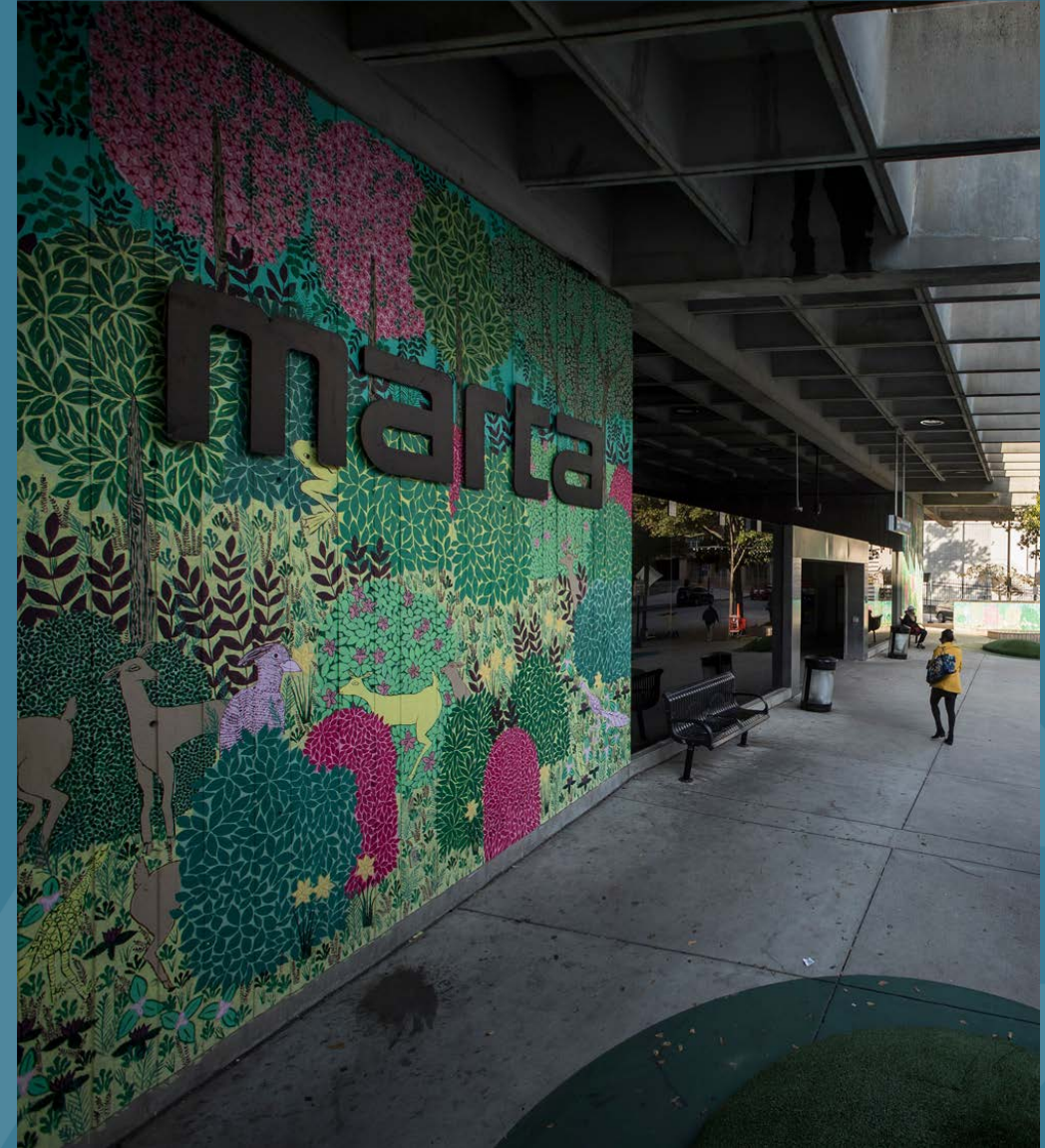
- Main Point of Contact between the Study Process and ARC
- Requests and information should flow through them once you begin the study.
- Receives Invoices and Monthly Progress Reports
- Attend Project Management Team Meetings and other public meetings
- Ensures study is meeting milestones and meets ARC needs

# RTSP-Local Sponsor's Role

- Main Point of Contact at the Local Level
- Manages the consultant and serves as the main point of contact for studies project
- Ensures timely Invoicing and Monthly Progress Reports
- Ensures Study meets the community needs; Review final deliverables
- Pays consultants in timely manner
- Ensure coordination with ARC Project Manager

# Livable Centers Initiative (LCI)

- LCI originally adopted in 1999 by ARC Board as part of the RTP (Mobility 2030)
- Current funding committed in the RTP (through 2050):
  - \$2 Million per year for studies
  - \$20 Million per year for transportation infrastructure
- To date, LCI has funded ~\$250 Million on 120 transportation projects and \$18 Million on 278 studies in 122 distinct centers and corridors.





# Livable Centers Initiative (LCI) Studies

- Program goals: increasing density, mix of uses, mobility options, improved access jobs, services and retail, and affordable housing.
- Eligible areas: Town Centers (e.g. County seats, historic town centers) and districts with high-capacity transit service (MARTA station areas, bus transfer centers, locations with BRT or multiple bus lines)
- Current focus areas: Affordable housing, Creative Placemaking, Green Infrastructure and Smart Technology.



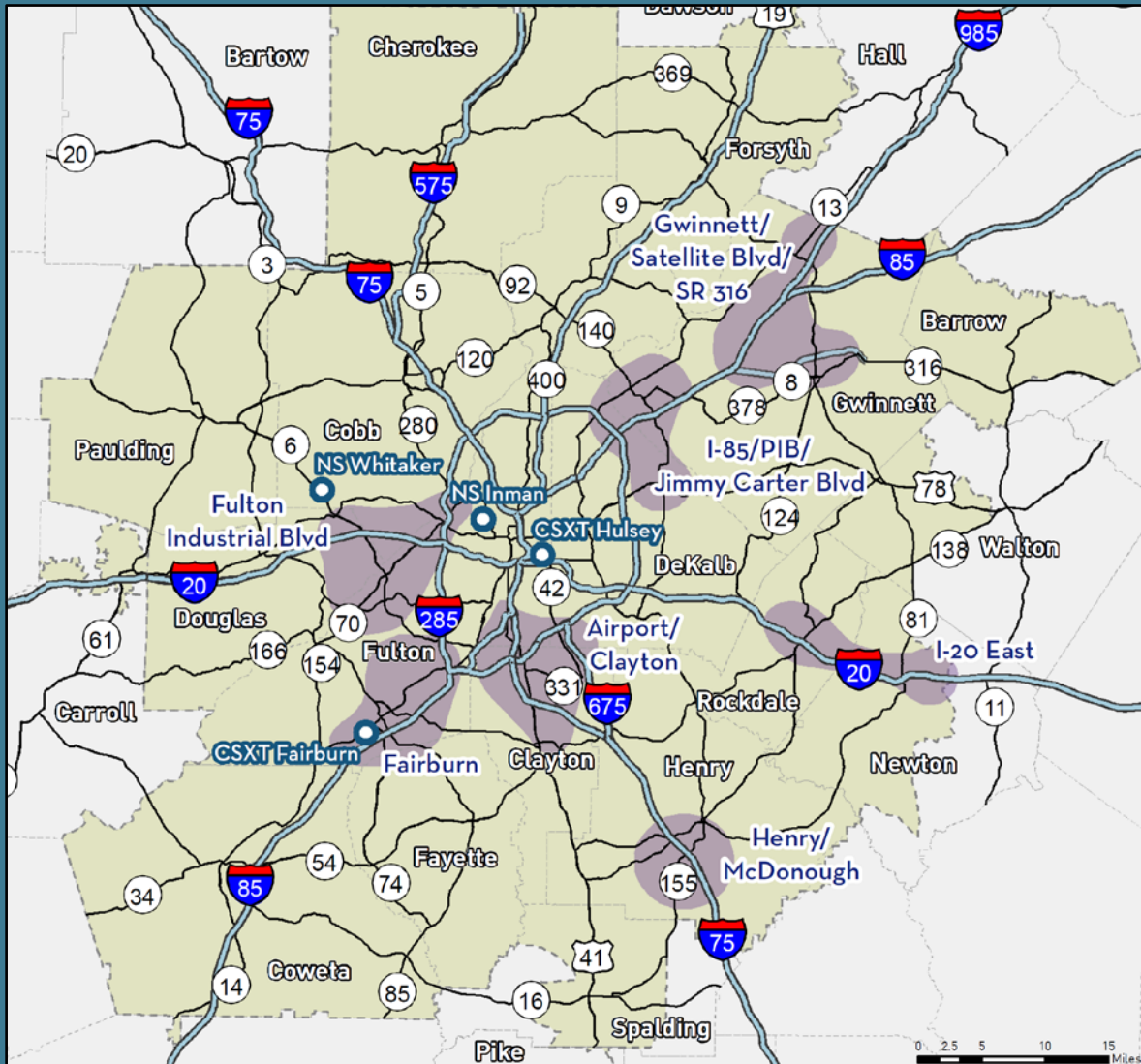
# Livable Centers Initiative (LCI) Studies

- Annual grant cycle – general timeline:
  - Application opens in January
  - Applications due in March
  - Awards in April
  - Approx. 18 months for study (including procurement)
- Grants range from \$80K-\$400K (\$150K typical)
- Evaluation Criteria:
  - Study Need and Innovation
  - LCI Program Goals & Priority Issues
  - Commitment and Ability to Implement
  - Geographic Diversity





# Freight Cluster Plans



- Freight Clusters were identified as part of the 2016 Regional Freight Plan Update
- Industrial development commonly is located near other industrial development
- Found a lack of local planning in these freight clusters areas
- Applicant study areas must be in a freight cluster or in a location with ongoing industrial growth, i.e. Spalding County



# Freight Cluster Plans

Regional  
Transportation Plan



Freight Cluster  
Plan

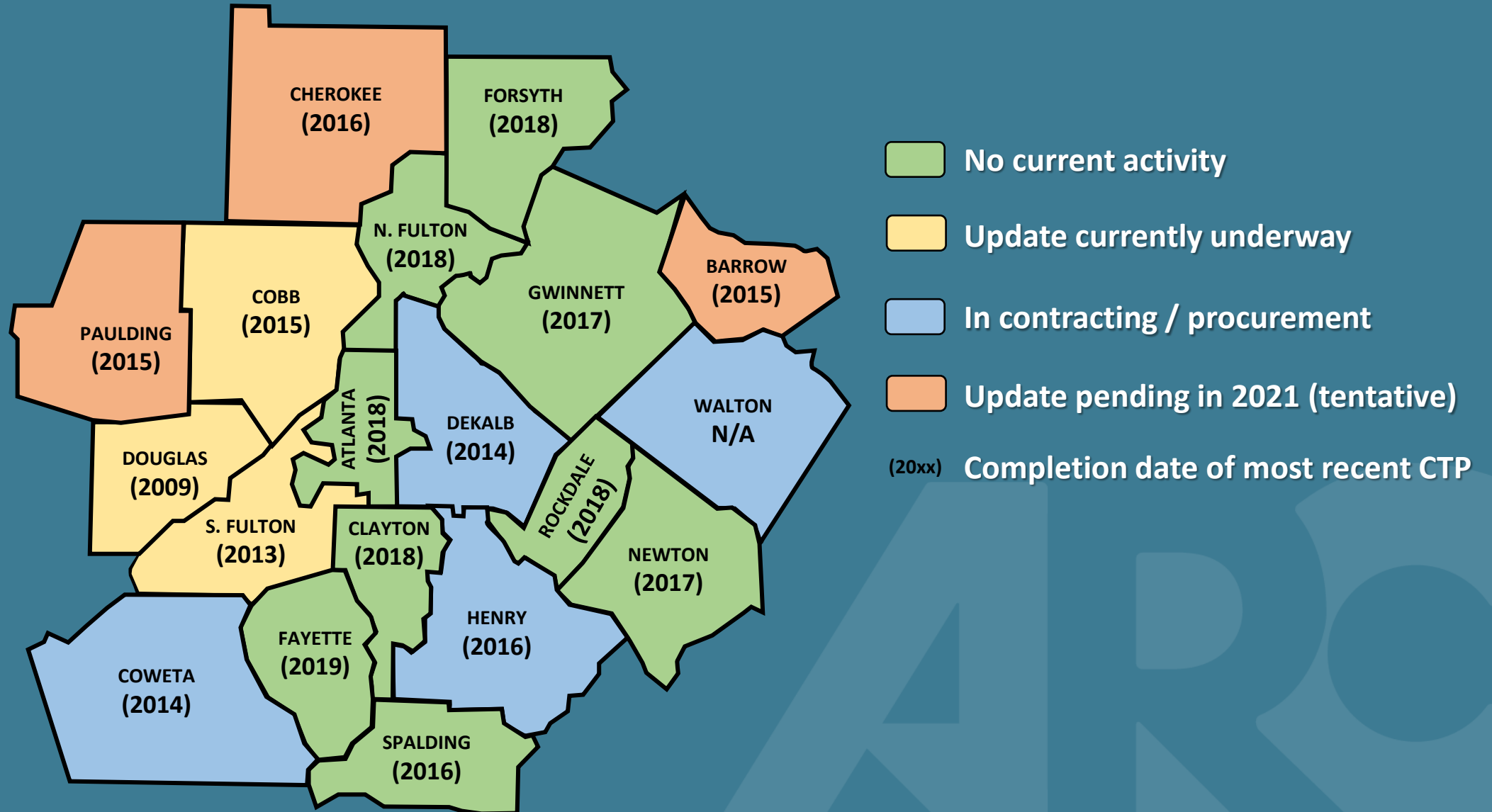
## Scope Content

- Roadways/Connectivity
- Safety/Crash Data Review
- Access to Jobs – Bike/Ped/Transit
- Traffic Study – Stand alone task
- Changing freight/logistics industry
- Technology Needs – ITS, CAV, etc.
- Growth potential
- Land use conflicts
- Truck Parking
- Bridges
- Rail Activity
- Alternative fuels
- Signage
- Lighting

# CTP Program

- Local long-range planning program established in 2005
- Fundamental building blocks of the Regional Transportation Plan
- Knits together community level plans developed under the Regional Transportation Study Program, LCI Program, Freight Cluster Studies Program and others
- Robust community engagement and local government adoption are required
- Includes a fiscally reasonable short-range component that can serve as a blueprint for SPLOST/TSPLOST votes and funding solicitations

# CTP Status





# Study Program Contacts

- **LCI Studies** - Jared Lombard, [jlombard@atlantaregional.org](mailto:jlombard@atlantaregional.org)
- **LCI Transportation Projects** - Amy Goodwin, [Agoodwin@atlantaregional.org](mailto:Agoodwin@atlantaregional.org)
- **LCI website** - [www.atlantaregional.org/lci](http://www.atlantaregional.org/lci)
- **Regional Transportation Study Program** – Marquitrice Mangham, [mmangham@atlantaregional.org](mailto:mmangham@atlantaregional.org)
- **Freight Cluster Plans** – Daniel Studdard, [dstuddard@atlantaregional.org](mailto:dstuddard@atlantaregional.org)
- **Comprehensive Transportation Plan (CTP) Program** – David Haynes, [dhaynes@atlantaregional.org](mailto:dhaynes@atlantaregional.org)



# Study Contracts and Procurement



# Contracting & Budgeting

- Contracts are between ARC and your Organization (no PFA with GDOT).
- Procurement must be competitive
  - Either RFP or RFQ
  - Include your ARC Project Manager on the procurement process including interviews (except for CTP studies)
- If the final study budget is less than your LCI grant that is OK. If it is more, your organization will have to make up the difference.

# Role of Consultant

- Prepares Plan or Study
  - Manages the study to ensure work meets scope requirements and deadlines
  - Manages the process and schedules meetings and presentations in coordination with sponsor and ARC
  - Manages consultant team.

# Invoicing & Progress Reports

<Place on sponsor or consultant letterhead>

Progress Report # XX

Date:

Study Name:

Study Sponsor:

Contact Name & Email:

Reporting Period (begin date-end date):

---

Activities completed this period:

Task 1: <insert name of task from ARC contract>

- → <detail activities completed here>
- → <use as many bullets needed>

Task 2: <insert name of task from ARC contract >

- → <use as many bullets needed>

Task 3: <insert name of task from ARC contract >

- → <use as many bullets needed>

Task 4: <insert name of task from ARC contract >

- → <use as many bullets needed>

Task XX (list additional tasks as needed)

Upcoming tasks, deliverables and activities:

- → <Enter text>
- →

Issues, comments and schedule status:

- → <Enter text>
- →

# INVOICE

Date: \_\_\_\_\_  
 Project: \_\_\_\_\_  
 Invoice #: \_\_\_\_\_  
 Invoice Period: \_\_\_\_\_

→	→	→	→	→	→	→	→	→	→
Work-Task	Description	Contract Lump Sum Amount	Percent Complete To-Date	Amount Expended To-Date	Total Previously Billed	Amount Expended This Invoice			
Task 1	XXXXXXXXXX	-----> \$\$\$\$\$	→ %%	-----> \$\$\$\$\$	-----> \$\$\$\$	→ \$\$\$\$\$			
Task 2	XXXXXXXXXX	-----> \$\$\$\$\$	→ %%	-----> \$\$\$\$\$	-----> \$\$\$\$	→ \$\$\$\$\$			
Task 3	XXXXXXXXXX	-----> \$\$\$\$\$	→ %%	-----> \$\$\$\$\$	-----> \$\$\$\$	→ \$\$\$\$\$			
Task 4	XXXXXXXXXX	-----> \$\$\$\$\$	→ %%	-----> \$\$\$\$\$	-----> \$\$\$\$	→ \$\$\$\$\$			
Task 5	XXXXXXXXXX	-----> \$\$\$\$\$	→ %%	-----> \$\$\$\$\$	-----> \$\$\$\$	→ \$\$\$\$\$			
<b>Totals</b>		-----> \$\$\$\$\$	→ %%	-----> \$\$\$\$\$	-----> \$\$\$\$\$	→ \$\$\$\$\$			
				Total this invoice:		\$\$\$\$\$			
				20% Local Share:		\$\$\$\$\$			
				80% ARC Share:		\$\$\$\$\$			
				<b>Payment Due:</b>		\$\$\$\$\$			

**DBE Participation:**

Name of DBE	Contract Amount	Earned To-Date	Paid To-Date	Contract Balance
_____	_____	_____	_____	_____
_____	_____	_____	_____	_____
_____	_____	_____	_____	_____

\_\_\_\_\_  
 Signature and Title of Appropriate Official



Questions?

