

LIVABLE CENTERS INITIATIVE 2.0

A NEW FRAMEWORK

Update

October 11, 2018

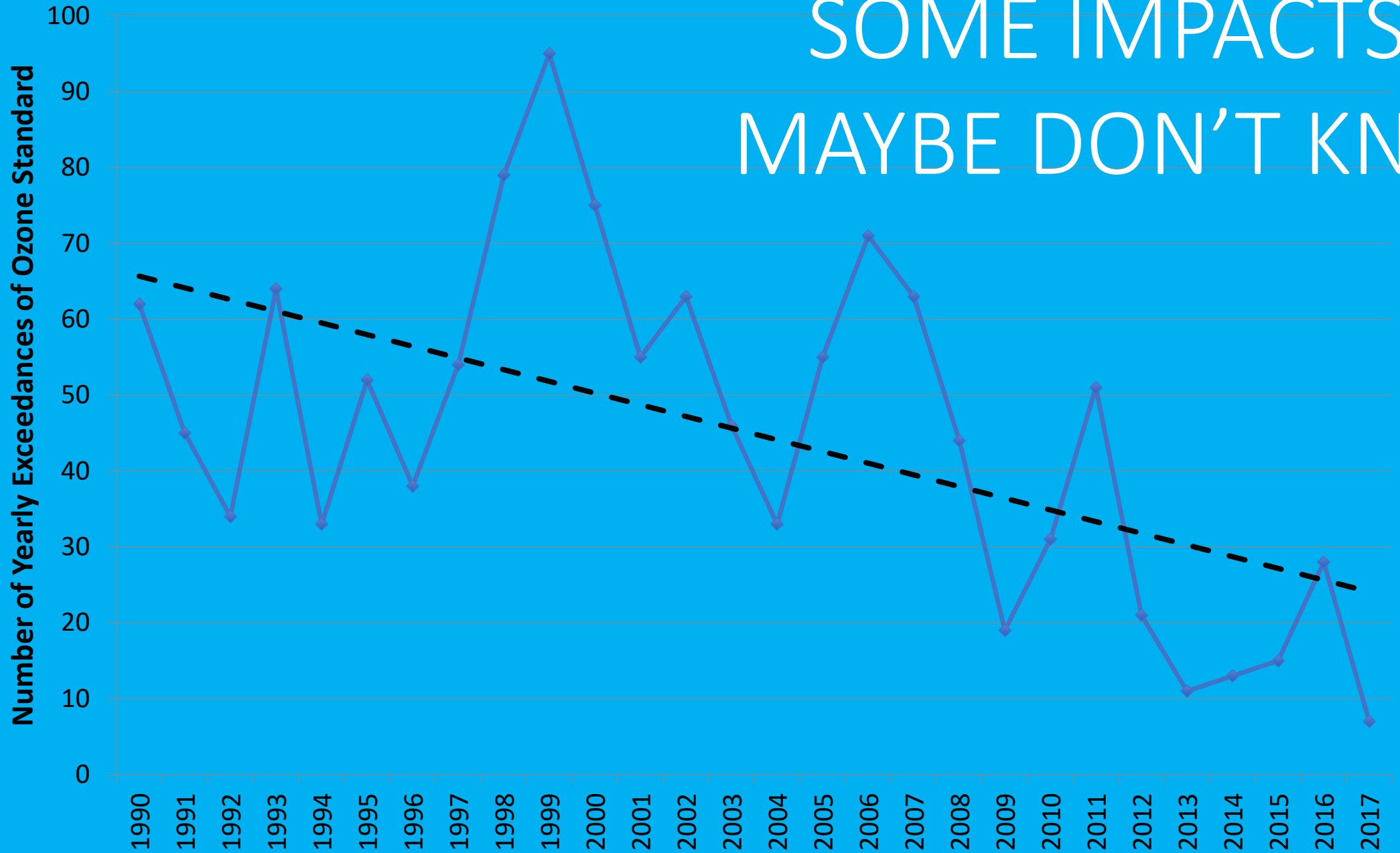


Sam Shenbaga, Manager
Community Development Group
sshenbaga@atlantaregional.org



LCI PROGRAM IMPACT

SOME IMPACTS WE MAYBE DON'T KNOW



A map of a region, likely in the Southeastern United States, showing various colored overlays and highway markers. The map features a network of roads, including several major interstates: I-75, I-285, I-675, I-85, and I-20. A circular marker with the number 400 is also visible. The background is a mix of green, yellow, and orange, suggesting different land use or environmental data. The text "OUR REGION IS CHANGING..." is overlaid in white, bold, sans-serif font across the center of the map.

OUR REGION IS CHANGING...

Today we see new kinds of challenges and opportunities that the LCI is not designed to address

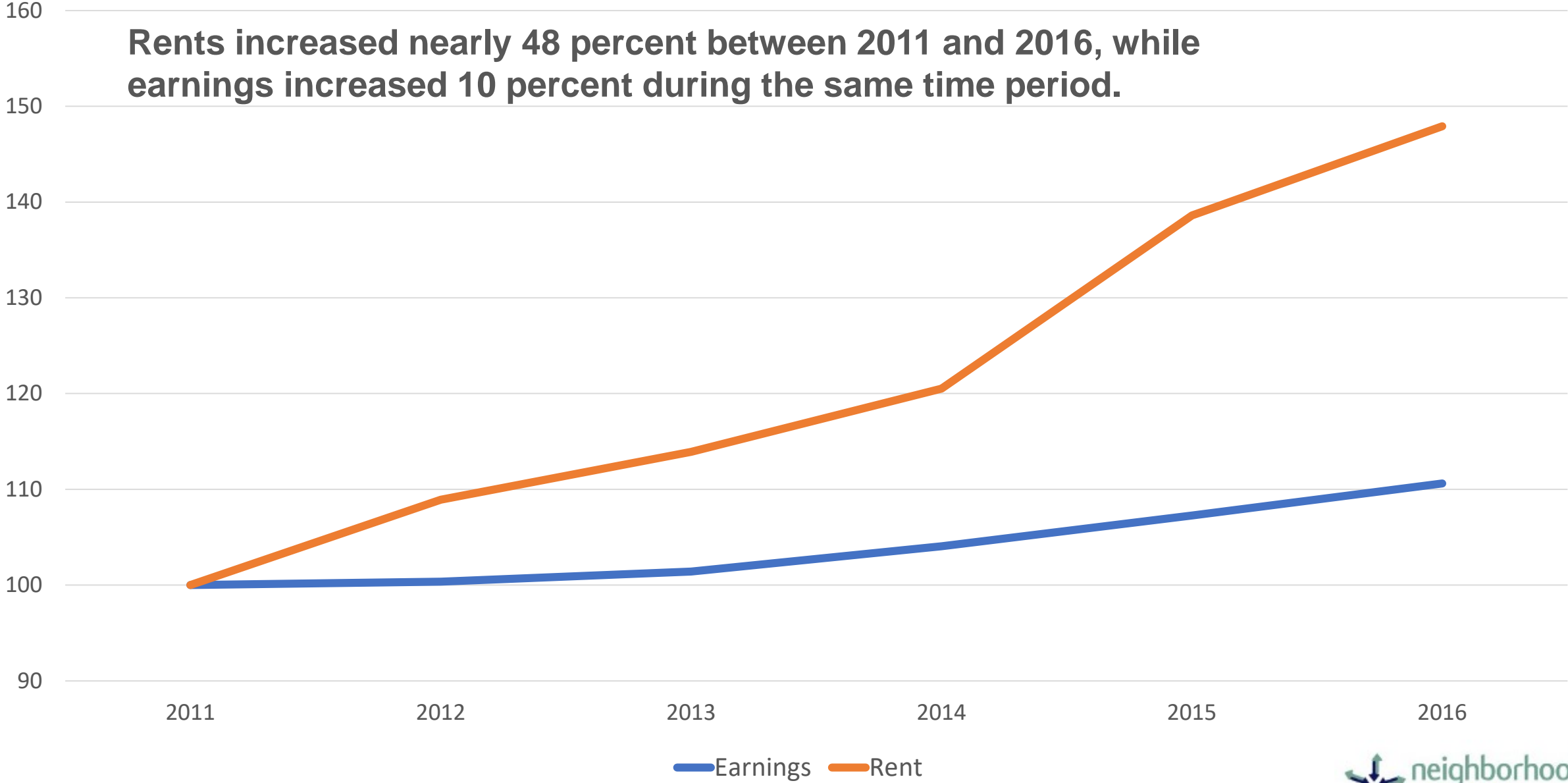


Changing dialogue

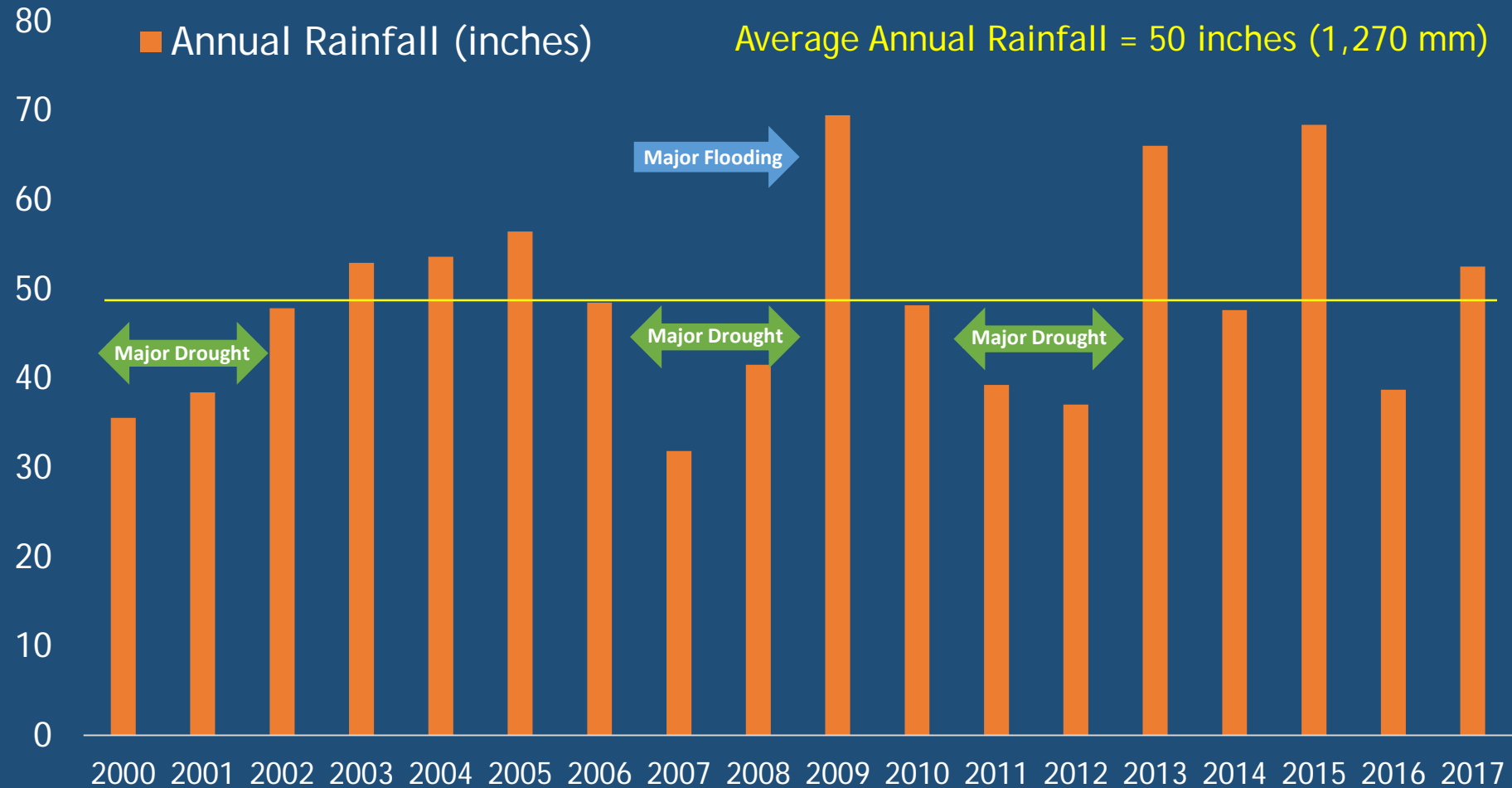
Changing expectations

Changing economy

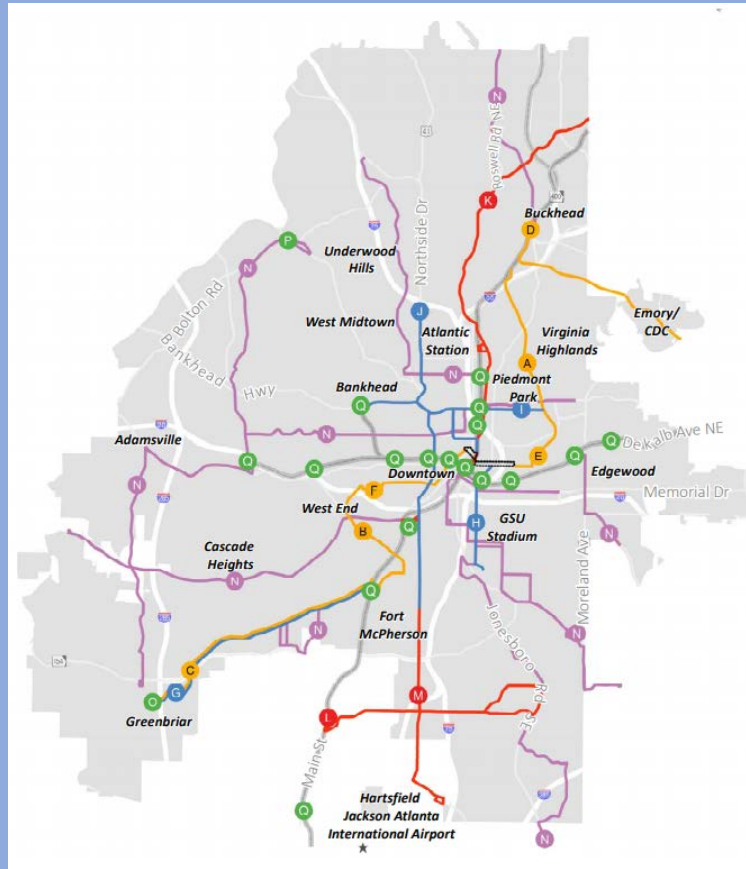
Rents increased nearly 48 percent between 2011 and 2016, while earnings increased 10 percent during the same time period.



Rainfall in the Atlanta Region



CHANGING EXPECTATIONS



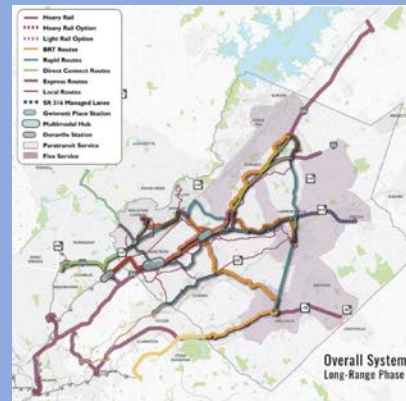
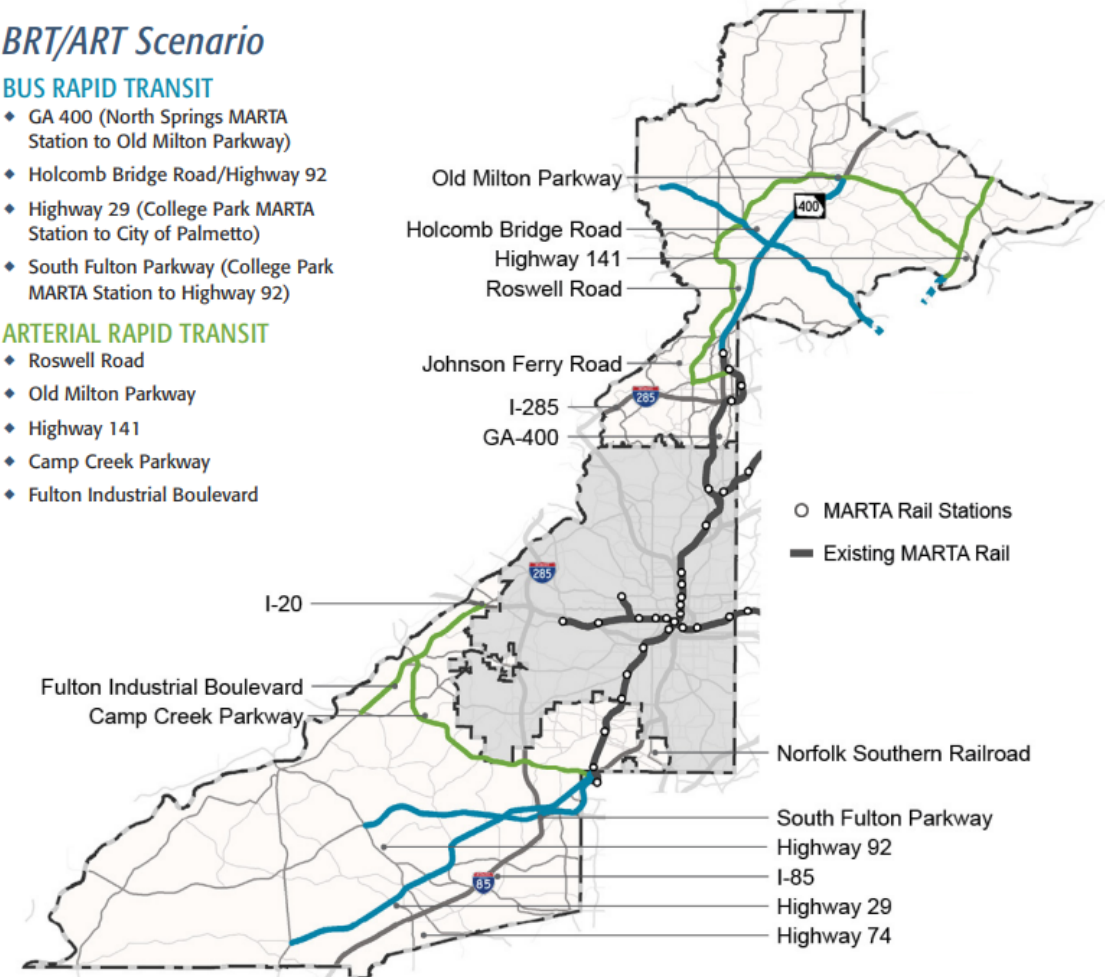
BRT/ART Scenario

BUS RAPID TRANSIT

- ◆ GA 400 (North Springs MARTA Station to Old Milton Parkway)
- ◆ Holcomb Bridge Road/Highway 92
- ◆ Highway 29 (College Park MARTA Station to City of Palmetto)
- ◆ South Fulton Parkway (College Park MARTA Station to Highway 92)

ARTERIAL RAPID TRANSIT

- ◆ Roswell Road
- ◆ Old Milton Parkway
- ◆ Highway 141
- ◆ Camp Creek Parkway
- ◆ Fulton Industrial Boulevard



Market value as of December 30, 2016

June 30, 2018 is \$889.29B.



CHANGING ECONOMY

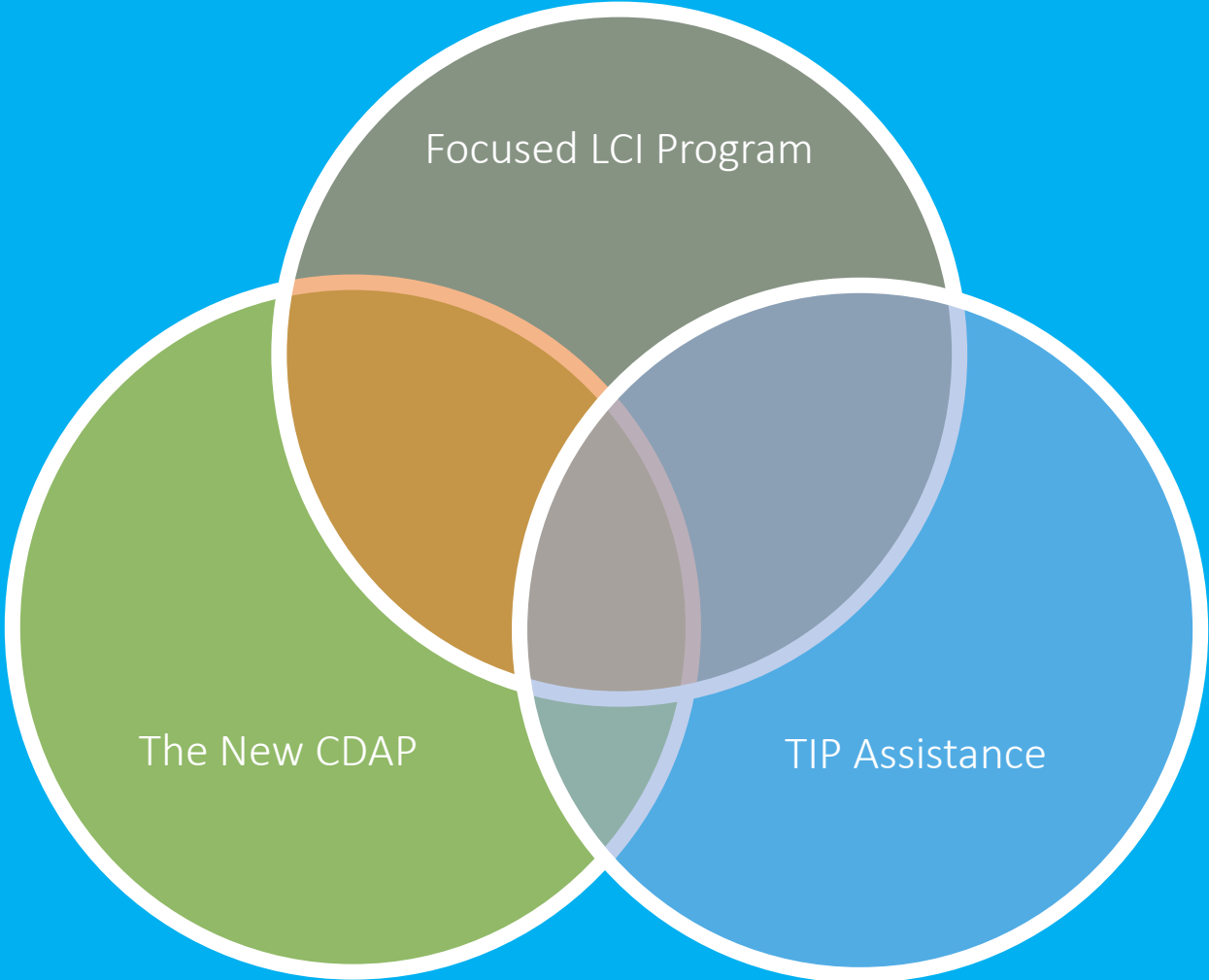
June 25, 2018 is \$254.12B.





A NEW FRAMEWORK

To make sure that every community achieves its best, the Community Development Group is defining a renewed framework for evaluating and focusing our efforts. It responds to the diversity of our region, acknowledging a wide variety of conditions, perspectives, identities, lifestyles, and values.



A Focused LCI Program

- **Catalytic**

support the creation of transit-oriented development around existing or planned transit nodes (rail or bus); and regional and local town centers that are committed to a multi-faceted planning approach – including resiliency and equity as core components.

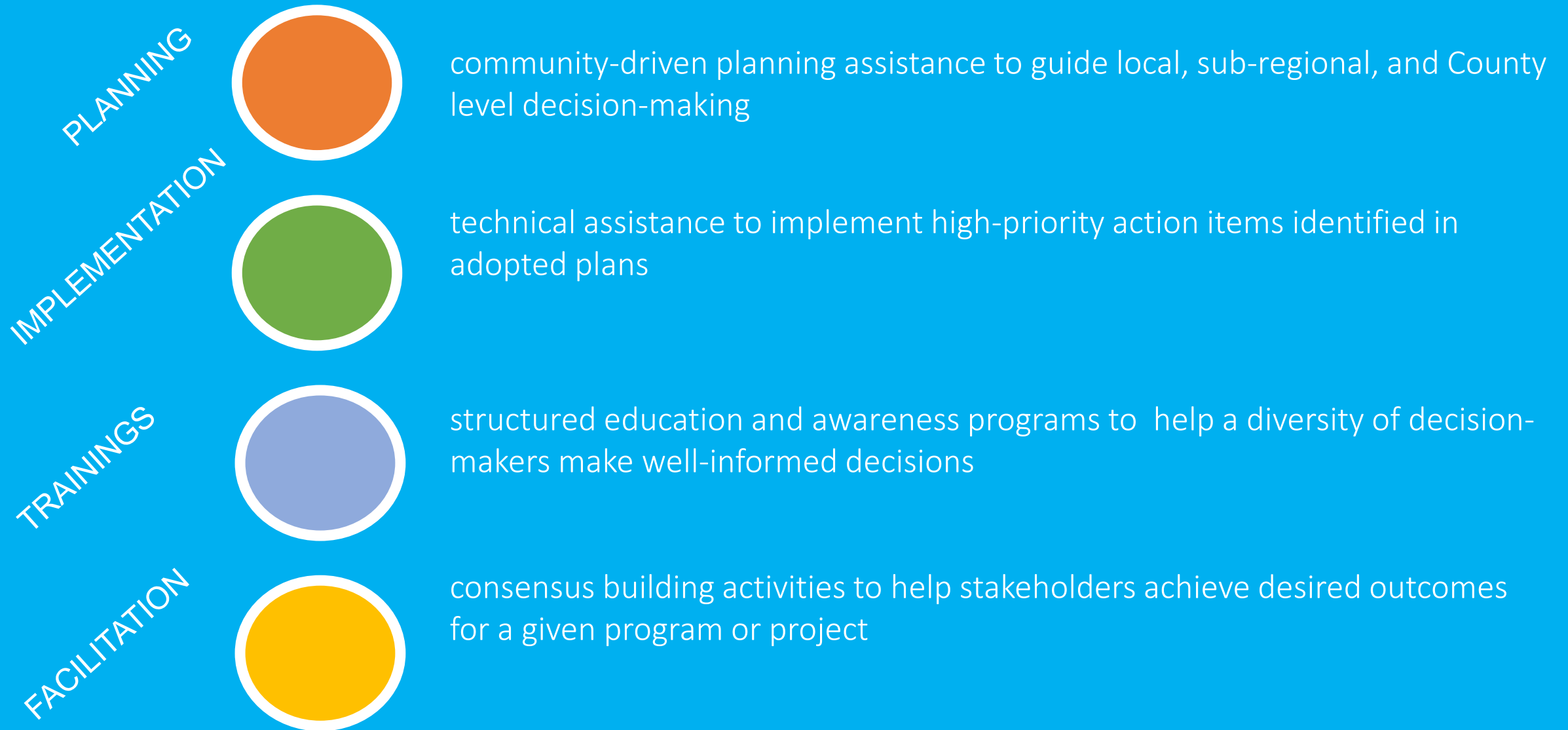
- **Tactical**

support implementation activities that provide multiple benefits to the LCI area. Studies will be expected to demonstrate how they will help create a more resilient and/or equitable LCI area.

- **Experimental**

support the experimentation of new initiatives within or outside of an LCI area. If the experiment is to be conducted in a geography outside of the LCI area, it should directly benefit the LCI area.

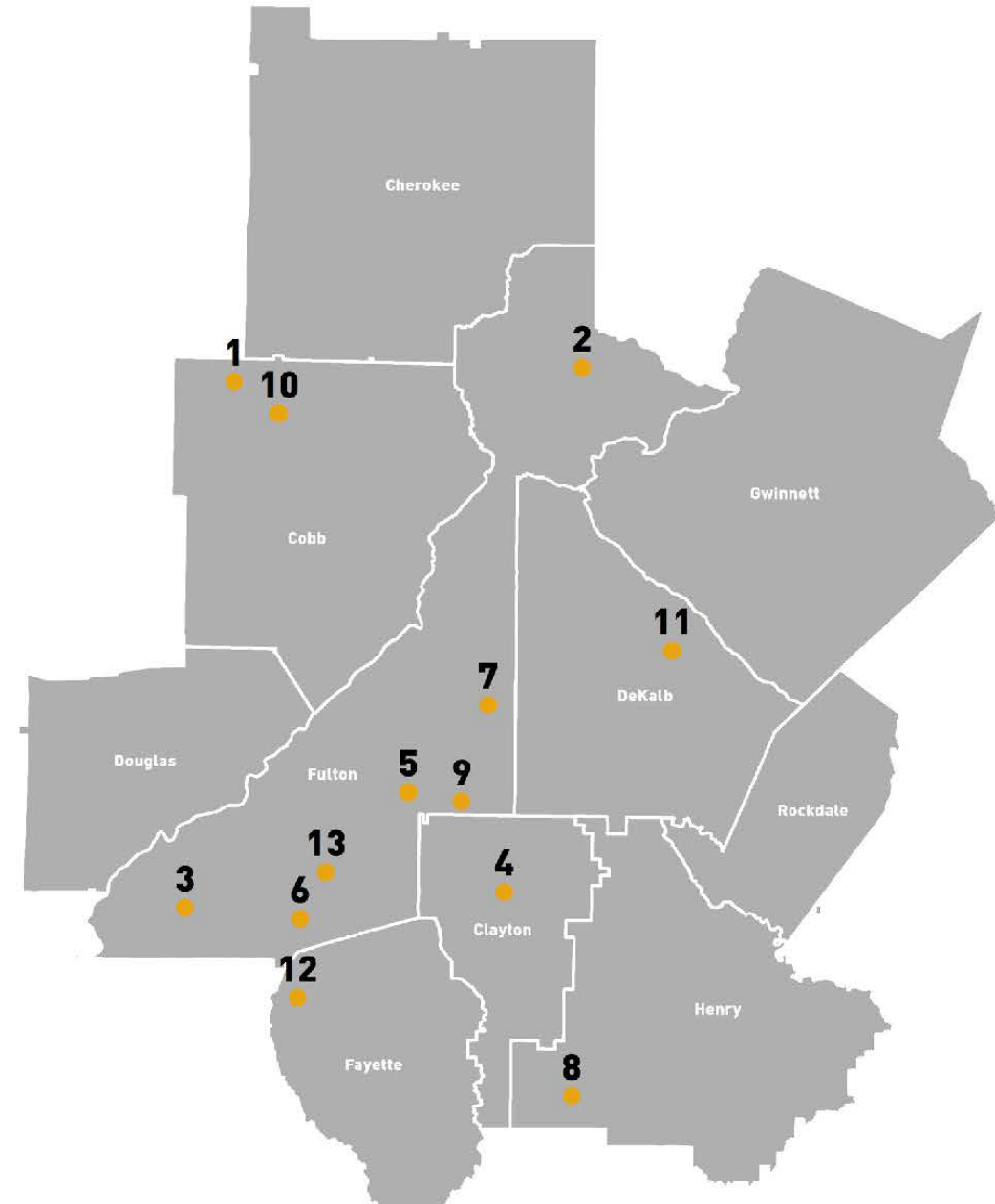
The New CDAP



Community Development Assistance Program 2018 Projects

Technical Assistance by ARC Staff

- 1 Acworth Planning Commission and City Council Training
- 2 Alpharetta Placemaking Plan
- 3 Chattahoochee Hills Stormwater Management Manual
- 4 Clayton County Zoning Board Training
- 5 East Point Downtown Overlay District Plan
- 6 Fairburn Creative Placemaking Plan
- 7 Grove Park Visioning and Housing Assessment
- 8 Hampton Economic Development Plan
- 9 Hapeville Affordable Housing Technical Memo and Parking Study
- 10 Kennesaw Stakeholder Facilitation Plan
- 11 Stone Mountain DDA Parking Study
- 12 Tyrone Downtown Zoning District Ordinance
- 13 Union City Community Garden Strategy



TIP Assistance

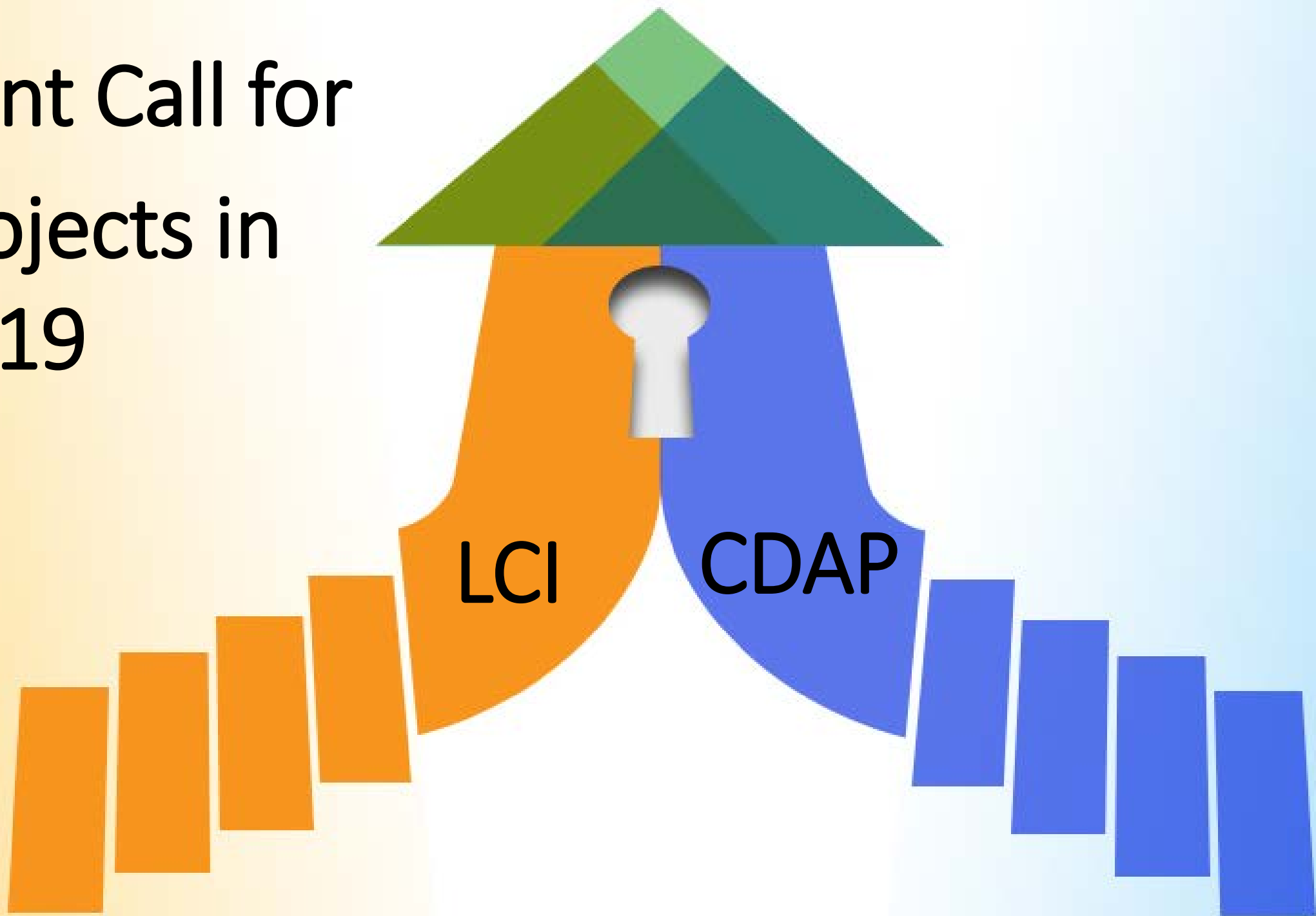
- College Park Station Access Plan
- Peachtree Street Placemaking Plan
- State Route 74 Corridor Study
- Howell Mill Cycle Atlanta Concept Study



Existing Conditions



Joint Call for Projects in 2019



Increase LCI Study Funding



- Increase to \$2 million a year for studies
- Current amount since program inception in 1999
- Administrative costs to remain same
- Critical need identified in focus group meetings

IDEAS EXCHANGE WORKSHOP

September 27, 2018

IDEAS EXCHANGE WORKSHOP

- Format
 - Open House
 - Two Focus Groups
- Purpose
 - Introduce new framework idea
 - Receive general feedback
 - Begin conversations about project ideas and how they may or may not fit in the new framework
- Participants
 - 75+ attendees for open house
 - Two Focus Group meetings; one with County and City Planning Directors, one with LCI Steering Committee

IDEAS EXCHANGE WORKSHOP

91% supported proposed changes to the program

Equity and Resiliency Ideas

- Affordable Housing
- Green Infrastructure
- Workforce Development
- Incorporating education and awareness as part of studies

Barriers to Addressing Equity and Resiliency Ideas

- Lack of public understanding of equity and resiliency issues
- Lack of political will
- Need for proper messaging about need to address

NEXT STEPS

- Continue to receive input
- Define priority topics related to equity and resiliency based on input and discussion.
- Craft a new unified application process
- Launch unified call in January 2019
- Host pre-bid information session in February 2019
- Select projects in April 2019

