

# Regional Transit Vision Technology Decision



ATLANTA REGIONAL COMMISSION

# Regional Transit Vision

- Concept 3 – Creating and Realizing the Regional Transit Vision
- Atlanta Region's long-range transit vision
- Adopted 2008
- Updated in 2012 – with an updated Map and [Project List](#)



# Project Goals

- Revisited Project List
- Develop Recommendations for
  - Evaluation Criteria
  - Evaluation Tools
- Evaluate Projects for inclusion in the Plan Update
- Update Plan
- Formalize Framework for evaluating projects going forward

# 2017 Regional Transit Vision Update Project Team



TRANSPORT  
FOUNDRY



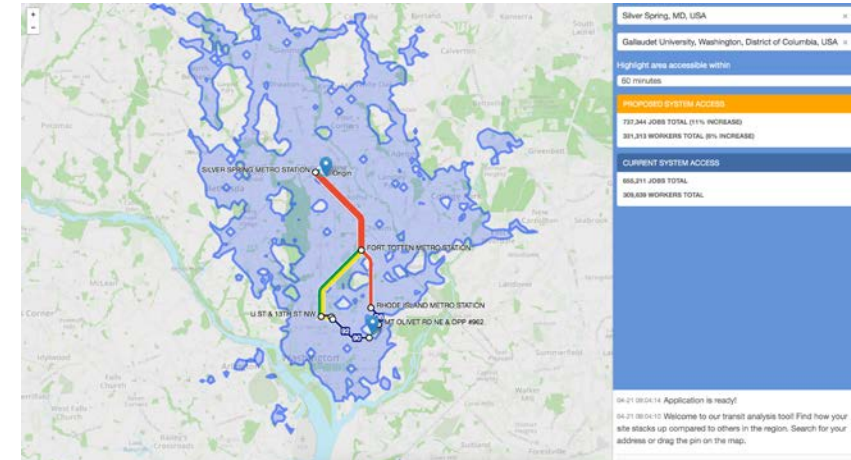
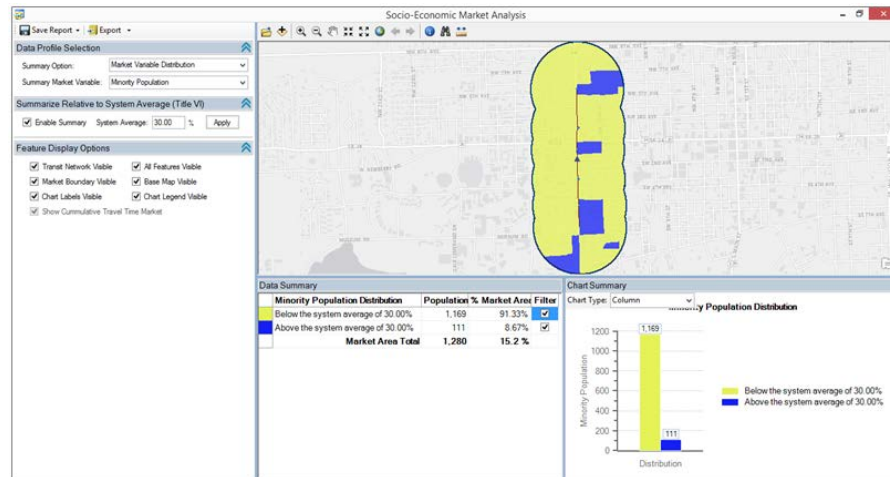
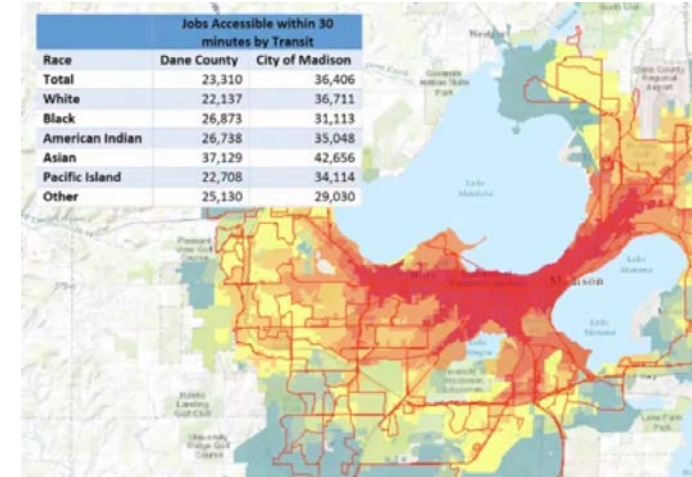
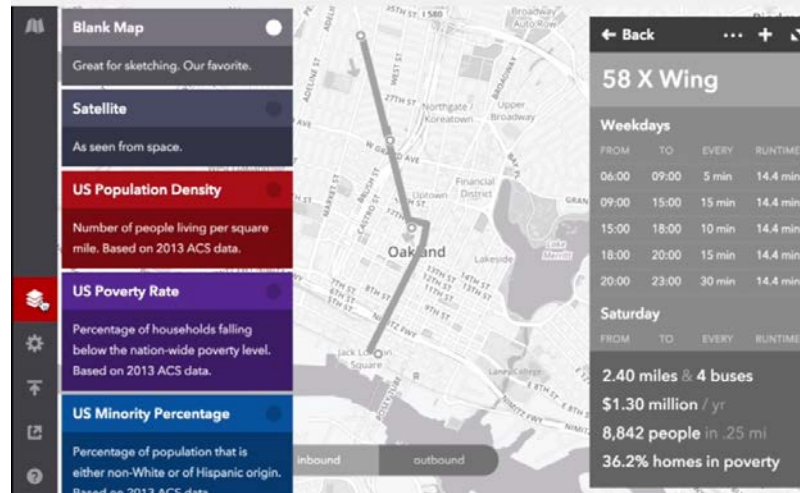
GRIDWORKS

# Project Timeline

Contract runs 12-2016  
through 3-2018

- Project Kickoff November 2016
- Stakeholder Meetings:
  - December 2016
  - March 2017
  - May 2017
  - July 2017
- Develop Universe of Projects
- Develop Evaluation Framework
  - Tier/Matrix
  - Evaluation Metrics
  - Data Sources
- Develop Set of Evaluation Tools
- Project Evaluation
- Plan Update

# Technology Selected



# Test Projects

- Cover all Modes
- Geographically Diverse
- ETA inclusion
- Approximate alignments



# Evaluation Criteria

- Ridership
- Asset Management/Efficiency
- Air Quality and Congestion
- Social Equity
- Land Use Compatibility
- Accessibility (Employment and other Destinations)



# Test Results

Criteria	Example Measure	Conveyal Analyst	Citilabs Sugar Access	Remix	TBEST	TF CityCast
Mobility & Congestion	Ridership				●	●
Asset Management	Riders/service mile			●	●	●
Air Quality & Climate Change	Automobile VMT					●
Social Equity	Jobs in 45 minutes for ETA population	●	●	●	●	●
Land Use Compatibility	Residential catchment	●	●	●	●	●
Employment Accessibility	Jobs in 45 minutes	●	●	●	●	●

## Strengths and Weaknesses

Software	Biggest Strength	Biggest Weakness
Conveyal	Web application	Inconsistent performance and results
Sugar	Flexibility	Difficult network editor
Remix	Ease of use	Simplistic
TBEST	Fully-featured	Data extraction
Citycast	Complete microsimulation	Lack of user interface

Scenario	Conveyal Mean Positive Access to Jobs Effect	Sugar Household Mean Work Access	Remix Jobs Catchment	TBEST Access via Transit*	CityCast % Change in Median Commute
Streetcar	1,749.17	83,737	4,137		0.65
Light Rail	11,061.63	85,049	18,870		-10.07
BRT/Express	13,448.54	86,075	42,120		-3.79
Commuter Rail	2,490.04	84,862	16,782		-0.98
Heavy Rail/Station	2,473.08	84,595	365		-3.81

# Evaluation Criteria not Addressed in Software

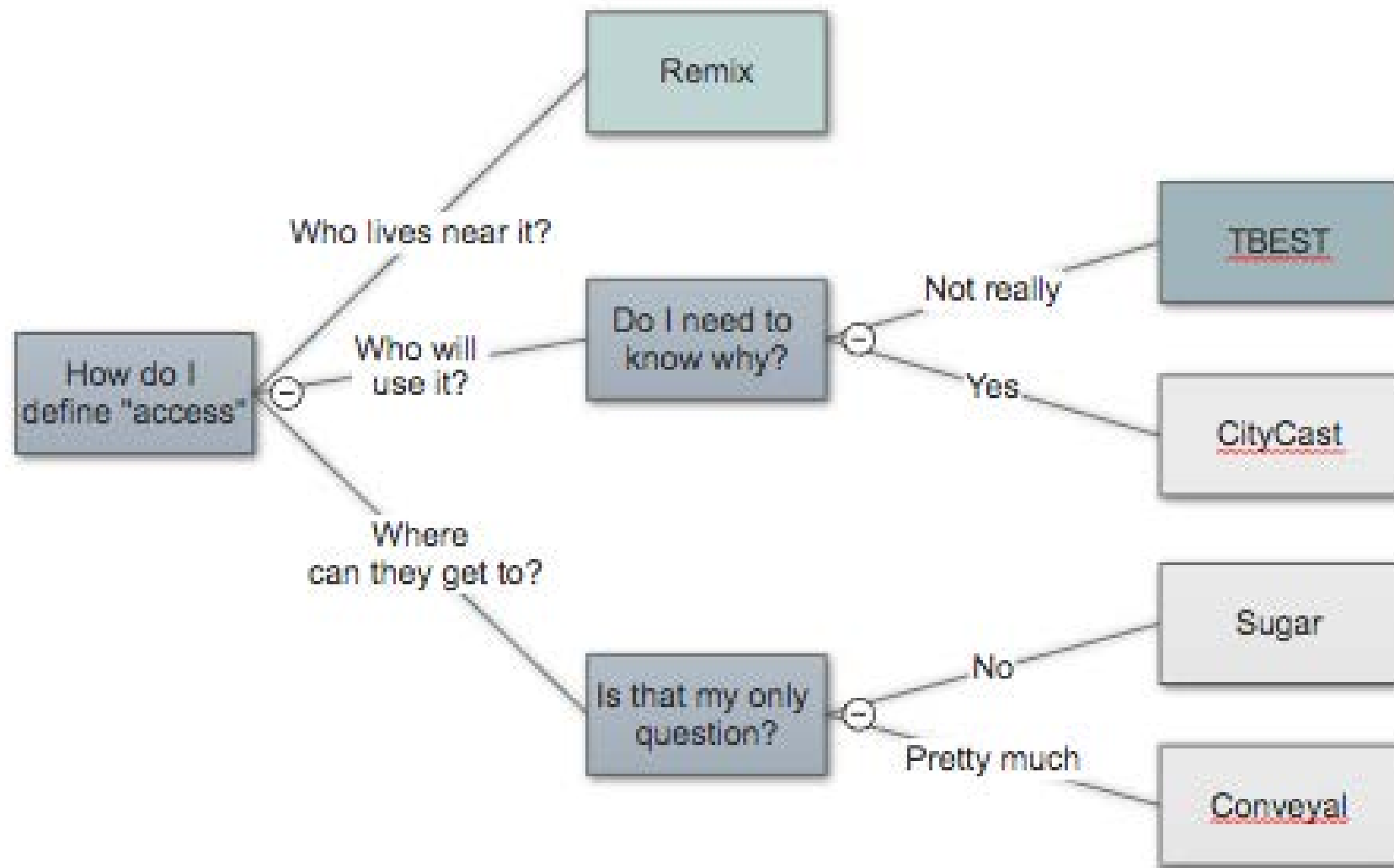
- Network Reliability
- Network Resiliency
- Multimodalism
- Environmental/Cultural Impacts

# What evaluation criteria is most important to us?

- Employment Accessibility
- Land Use Compatibility
- Social Equity

Criteria	Example Measure	Conveyal Analyst	Citilabs Sugar Access	Remix	TBEST	TF CityCast
Mobility & Congestion	Ridership				●	●
Asset Management	Riders/service mile			●	●	●
Air Quality & Climate Change	Automobile VMT					●
Social Equity	Jobs in 45 minutes for ETA population	●	●	●	●	●
Land Use Compatibility	Residential catchment	●	●	●	●	●
Employment Accessibility	Jobs in 45 minutes	●	●	●	●	●





# Where are we now?

- Remix
- Do we need a second tool
- Best option for second tool
- Evaluate costs

# Next Steps

- Select Technology/Finalize Evaluation Framework
- Evaluate Universe of Projects
- Update Plan
- Formalize Project Evaluation Process