



Atlanta Regional Commission
regional impact + local relevance

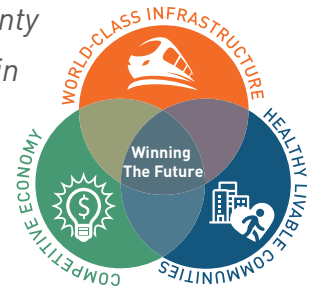
ARC 2021 ANNUAL REPORT – **GWINNETT COUNTY**

atlantaregional.org

September 2021



ARC works closely with local governments and community partners in Gwinnett County to improve quality of life and secure future success. This report measures progress in Gwinnett in the three long-range goals of the Atlanta Region's Plan: providing **World-Class Infrastructure**, fostering **Healthy, Livable Communities**, and developing a **Competitive Economy**.



WORLD-CLASS INFRASTRUCTURE

ARC works with its regional partners to develop and maintain world-class infrastructure, including a transportation network that improves mobility, and a sustainable supply of clean water.



Improving mobility in Gwinnett

A \$371.6 million in federal and state transportation funds allocated by ARC to the county. Projects include **corridor improvements to provide additional video surveillance at major intersections and adjust traffic signal timing**; reduced wait times for local service on Gwinnett County Transit; and a new interchange at SR 316 and Hi Hope Road.

4.5 million fewer miles traveled by the **1,000 Gwinnett residents** who participated in the **Georgia Commute Options** program, saving them **\$2.6 million** in fuel and vehicle maintenance costs.



Securing a sustainable future

678 **toilet rebates** were received by Gwinnett residents, facilitating the replacement of older, inefficient toilets.



The City of Norcross participated in the 2020-2021 **Sustainable Connections Internship Program**, allowing the city to increase its outreach to the public about recycling best practices and helping to maintain the city's BeeCity certification.

The **Metro Water District** partnered with **Georgia Public Broadcasting** to create a Live Exploration of Georgia's water systems called **Georgia's Water Live**. Over **79,000 students, teachers and parents** across the region tuned in during the live broadcast, where over **400 questions** were answered.

ARC's COVID-19 RESPONSE

Helping organizations transition to hybrid work environments

Georgia Commute Options (GCO), a program managed by ARC, served a vital role in helping organizations move to telework environments during peak pandemic times. As shelter-in-place orders began to lift in Georgia, GCO began helping companies establish hybrid work environments (continued telework, flexible schedules, and shared spaces), recognizing the strong desire of most employees surveyed to continue teleworking at a higher level than pre-pandemic.



HEALTHY, LIVABLE COMMUNITIES

ARC works to foster vibrant, pedestrian-friendly communities and supports healthy living and aging by offering a range of services for older people and individuals with disabilities.



Improving quality of life for Gwinnett residents of all ages and abilities

\$3.3 million in state and federal funds allocated by ARC to **Gwinnett Senior Services** for direct services provided to Gwinnett residents, including **congregate and home-delivered meals, in-home support services, transportation**, case management, and COVID relief funds.

Making Gwinnett an even better place to live, work, and play

\$220,000 Livable Centers Initiative grant to the **Gwinnett Place Community Improvement District** to create a revitalization study to improve both transportation and quality of life near Gwinnett Place Mall.

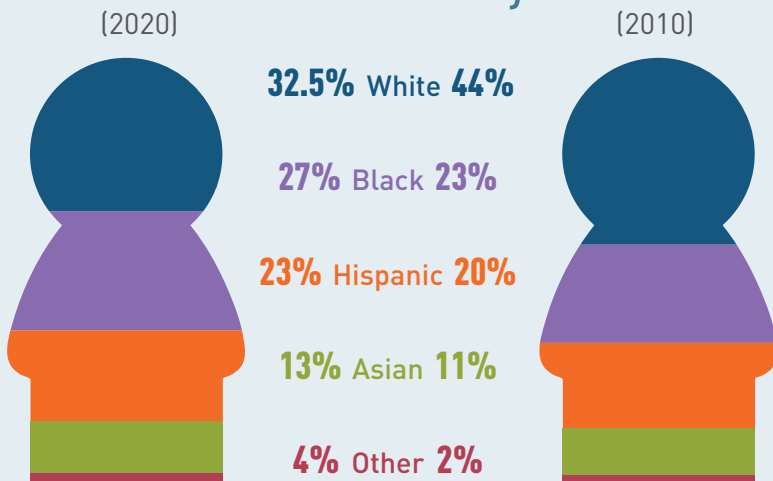
\$120,000 Livable Centers Initiative grant to the **Lilburn Community Improvement District** to update the existing LCI Plan within the Old Towne Lilburn and the Downtown Development Zone to promote creative placemaking and a diversity of housing options.

BY THE NUMBERS: GWINNETT POPULATION

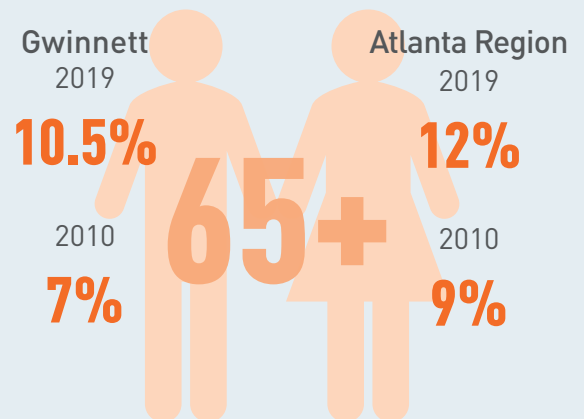
U.S. Census Counts



Race & Ethnicity



Percent of Population 65+



Source: ARC analysis of data from U.S. Census and 2019 ACS 1-year.

COMPETITIVE ECONOMY

ARC works with its regional partners to ensure our economy thrives and remains competitive.



Workforce Solutions: Connecting talent with opportunity

4 Gwinnett companies received new employees and wage subsidies through WorkSource Atlanta Regional's **On-the-Job Training (OJT) program**.

444 Gwinnett County residents received training through **WorkSource Atlanta Regional's Career Resource Center**.

238 Gwinnett youth received training through **WorkSource Atlanta Regional's NextGen** workforce and education program.



Cultivating leaders to meet the region's challenges

344 Metro Atlanta residents took part in ARC leadership programs, including: Regional Leadership Institute (RLI), Leadership Involvement Networking Knowledge (LINK), Arts Leaders of Metro Atlanta (ALMA), Community Planning Academy (CPA), and Model Atlanta Regional Commission (MARC).



BY THE NUMBERS: GWINNETT ECONOMY

Median Household Income (2019)

\$72,109

Gwinnett

\$71,742

Atlanta region



Gwinnett Jobs

(2021)

385,633

(2010)

333,272

Poverty Rate (2019)

9% in Gwinnett live below poverty level

10% in Atlanta region live below poverty level

Source: ARC analysis of data from 2019 ACS 1-year & JobsEQ, 2021Q1.

All data unless specified otherwise is through June 30, 2021.



Atlanta Regional Commission

229 Peachtree Street, NE | Suite 100
Atlanta, Georgia 30303

atlantaregional.org