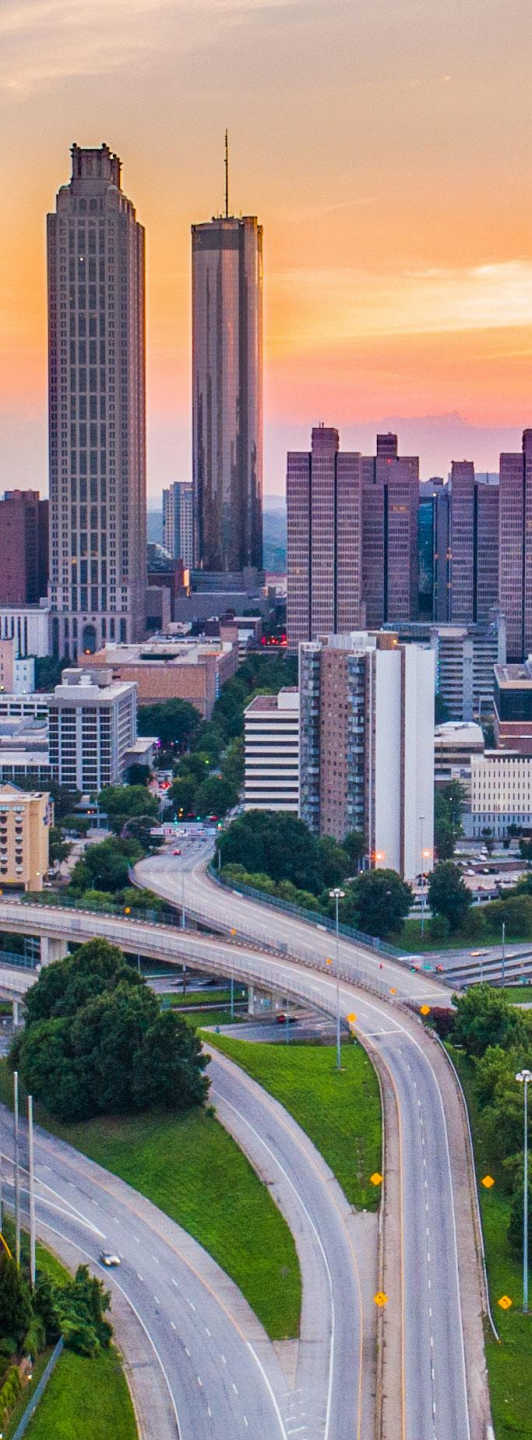


ARC Regional Development Plan Update

ARC Board Meeting

November 12, 2025



Vision

ONE **great** REGION

Mission

Foster thriving communities for all within the Atlanta region through collaborative, data-informed planning and investments.

Goals



Healthy, safe, livable communities in the Atlanta Metro area.



Strategic investments in people, infrastructure, mobility, and preserving natural resources.



Regional services delivered with **operational excellence** and **efficiency**.



Diverse stakeholders engage and take a regional approach to solve local issues.



A competitive economy that is inclusive, innovative, and resilient.

Values

Excellence – A commitment to doing our best and going above and beyond in every facet of our work allowing for innovative practices and actions to be created while ensuring our agency's and our colleague's success.

Integrity – In our conduct, communication, and collaboration with each other and the region's residents, we will act with consistency, honesty, transparency, fairness and accountability within and across each of our responsibilities and functions.

Equity – We represent a belief that there are some things which people should have, that there are basic needs that should be fulfilled, that burdens and rewards should not be spread too divergently across the community, and that policy should be directed with impartiality, fairness and justice towards these ends.



GROWING TOGETHER

METRO ATL DEVELOPMENT STRATEGY

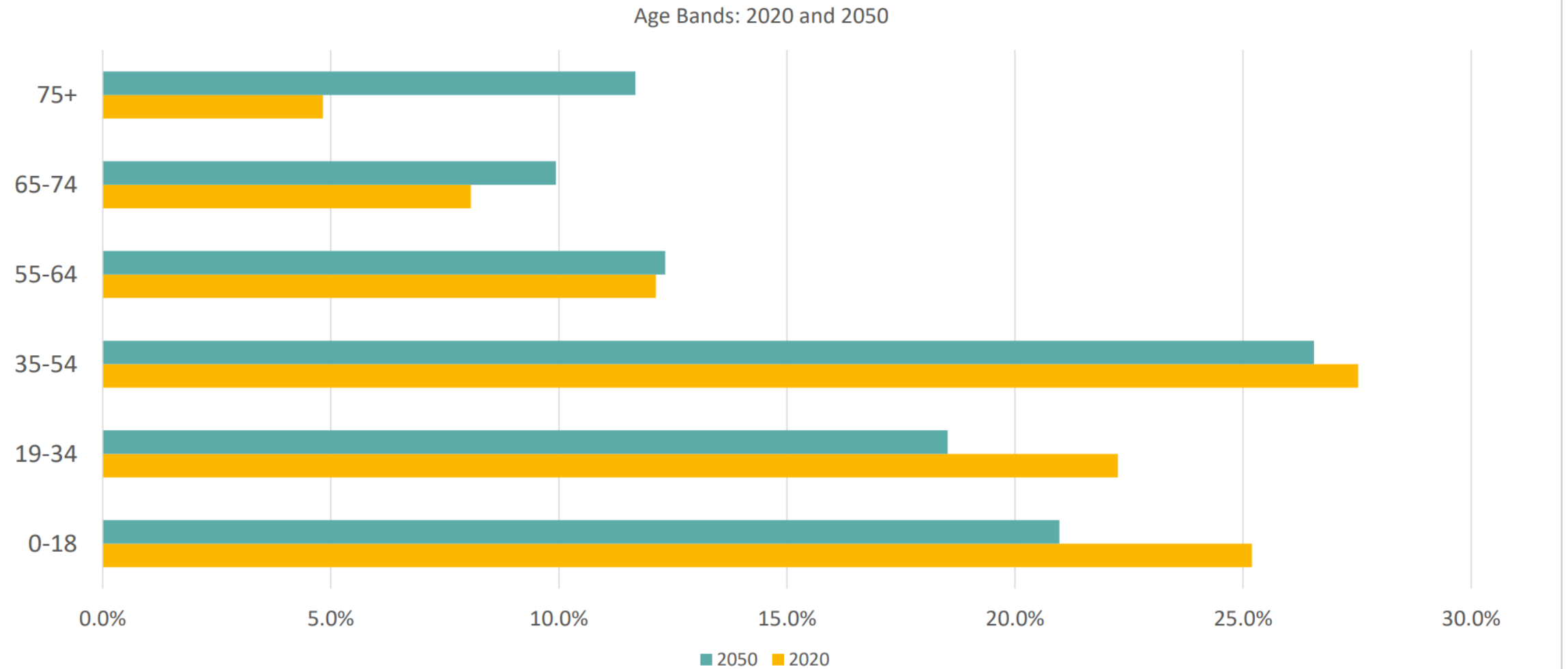
ARC Atlanta Regional Commission

A Growing Region

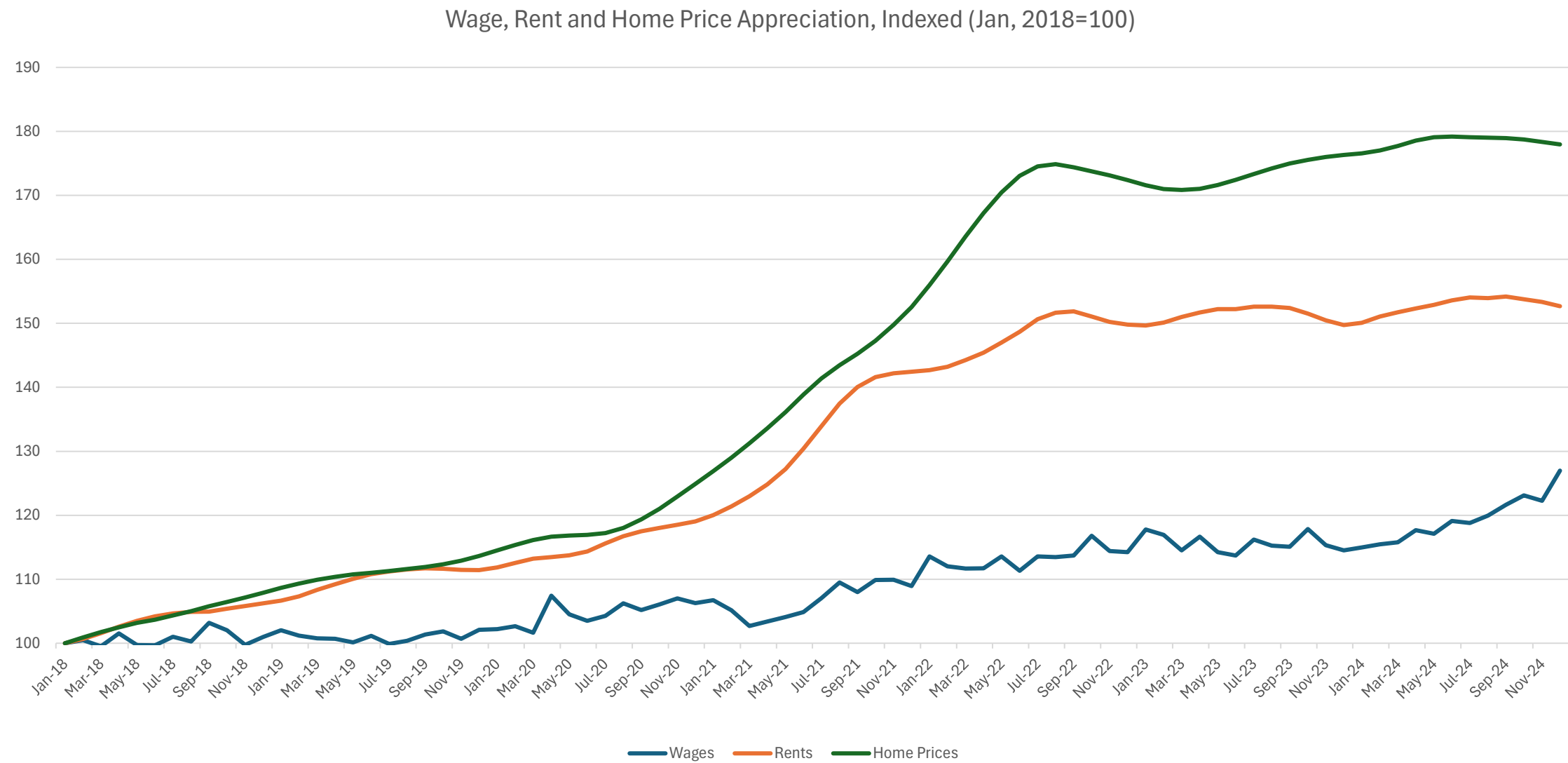
ARC's Series 17 Population and Employment Forecasts



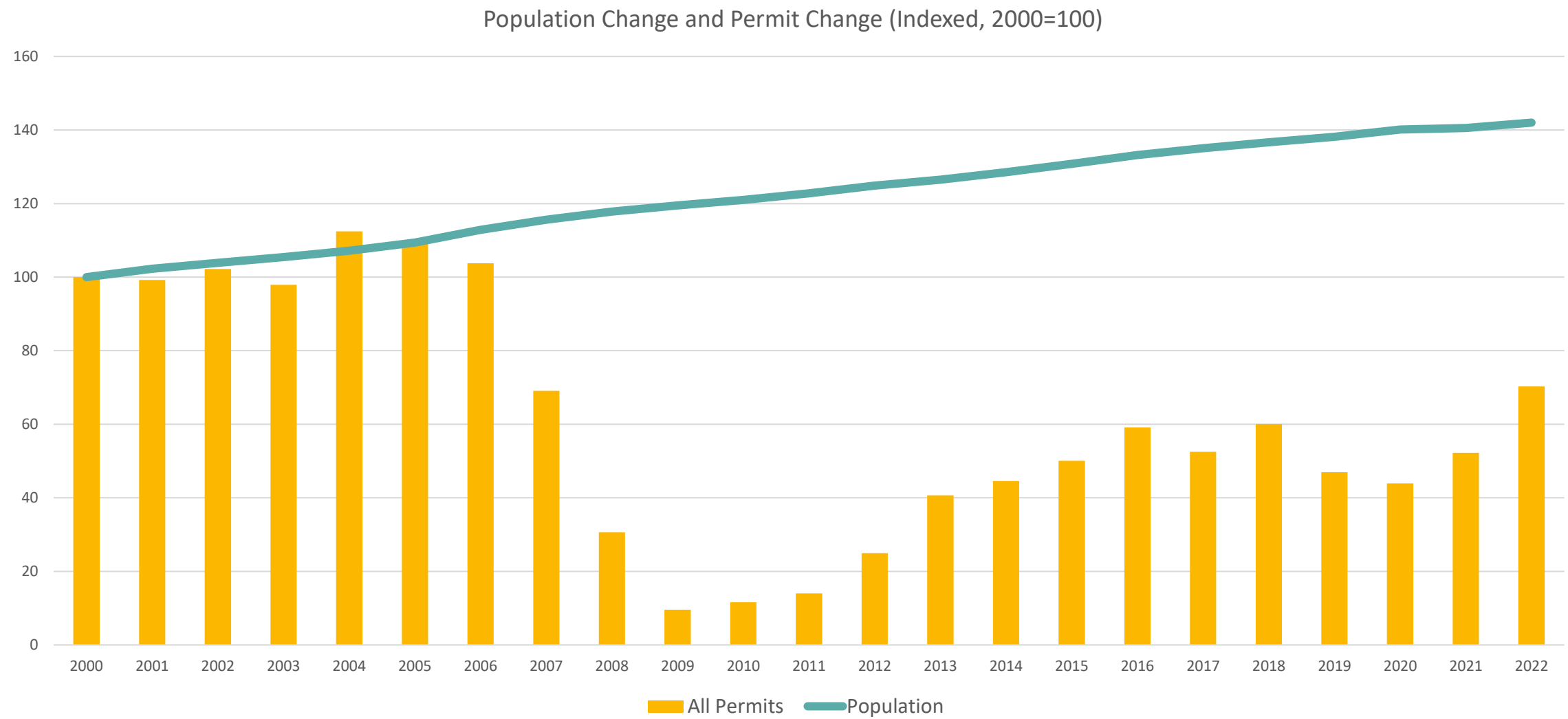
An Aging Region



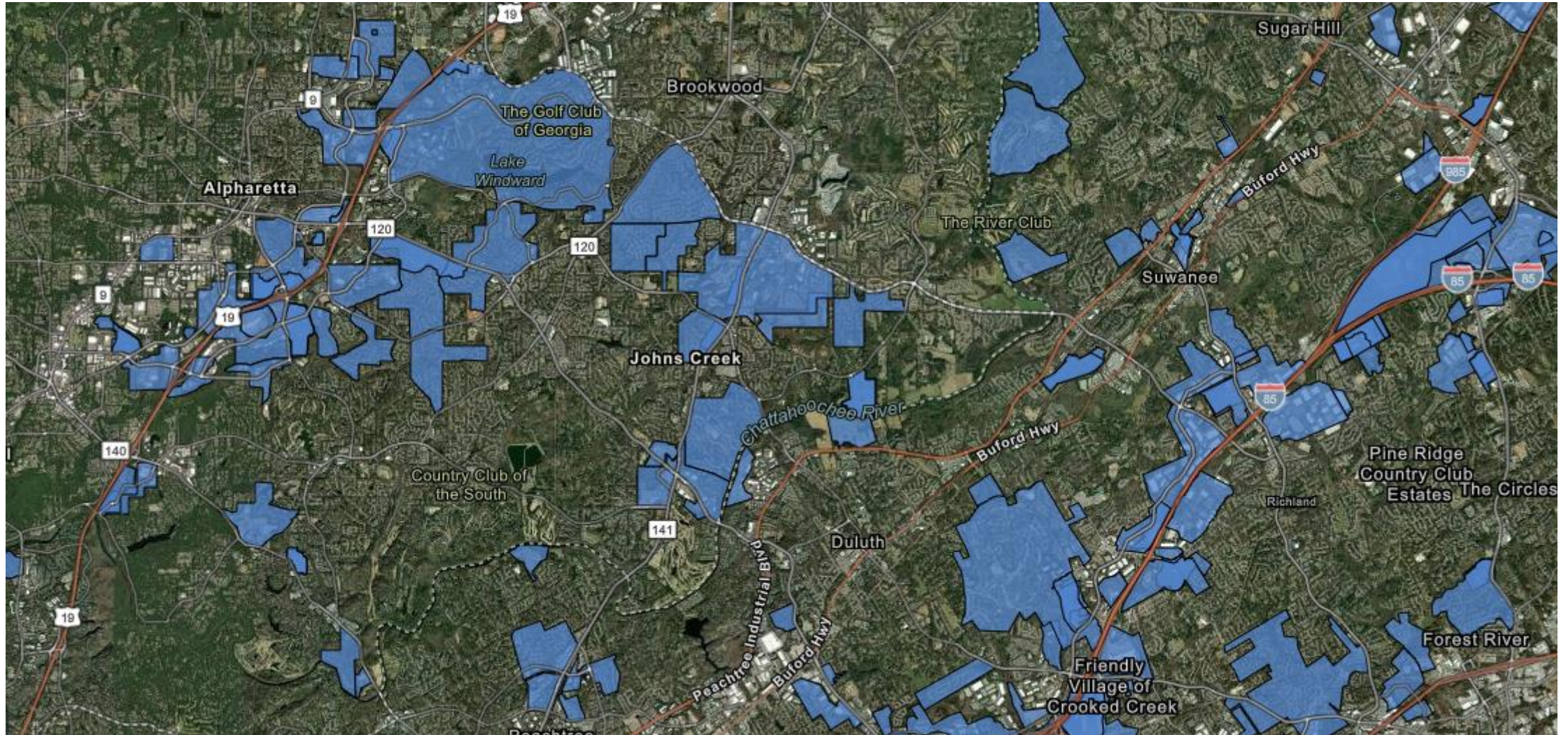
Wages vs. Rents and Home Prices



Production (Supply) vs. Population (Demand)



Regional Growth Patterns Need Regional Planning



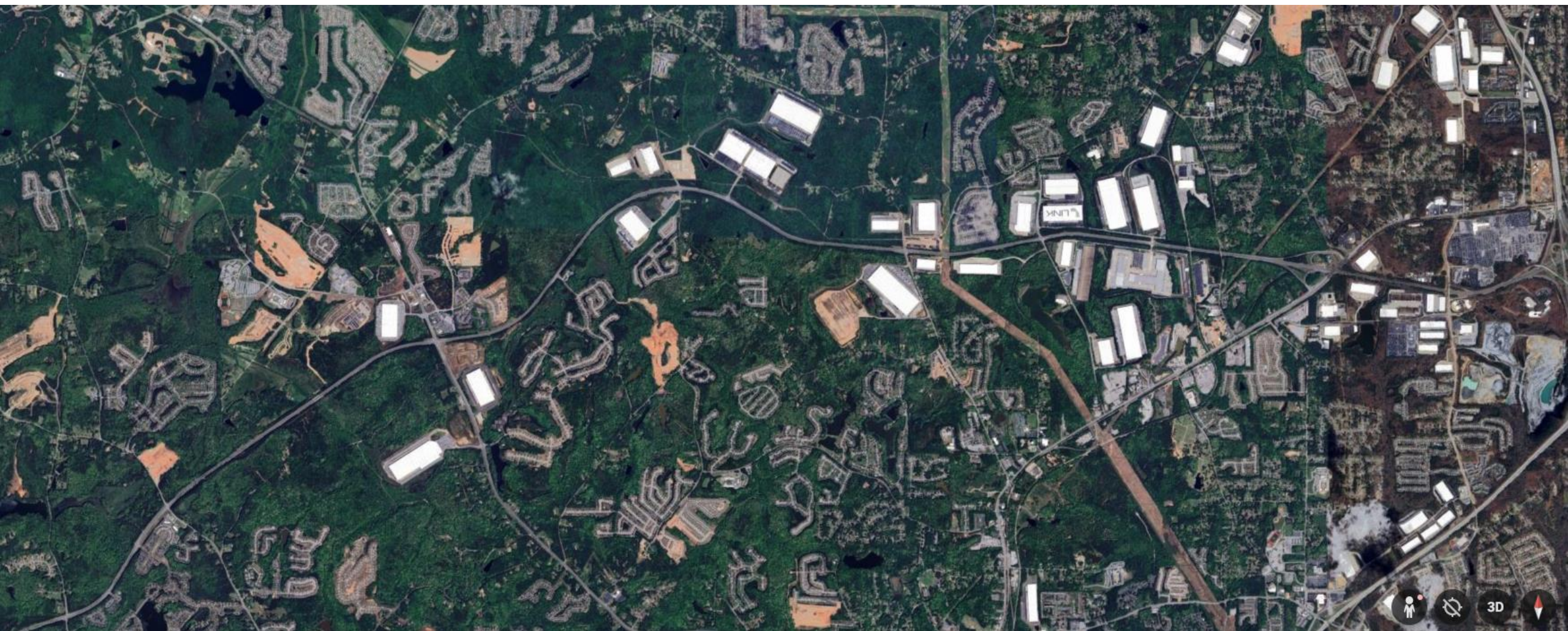
Growth Has Benefits...and Costs

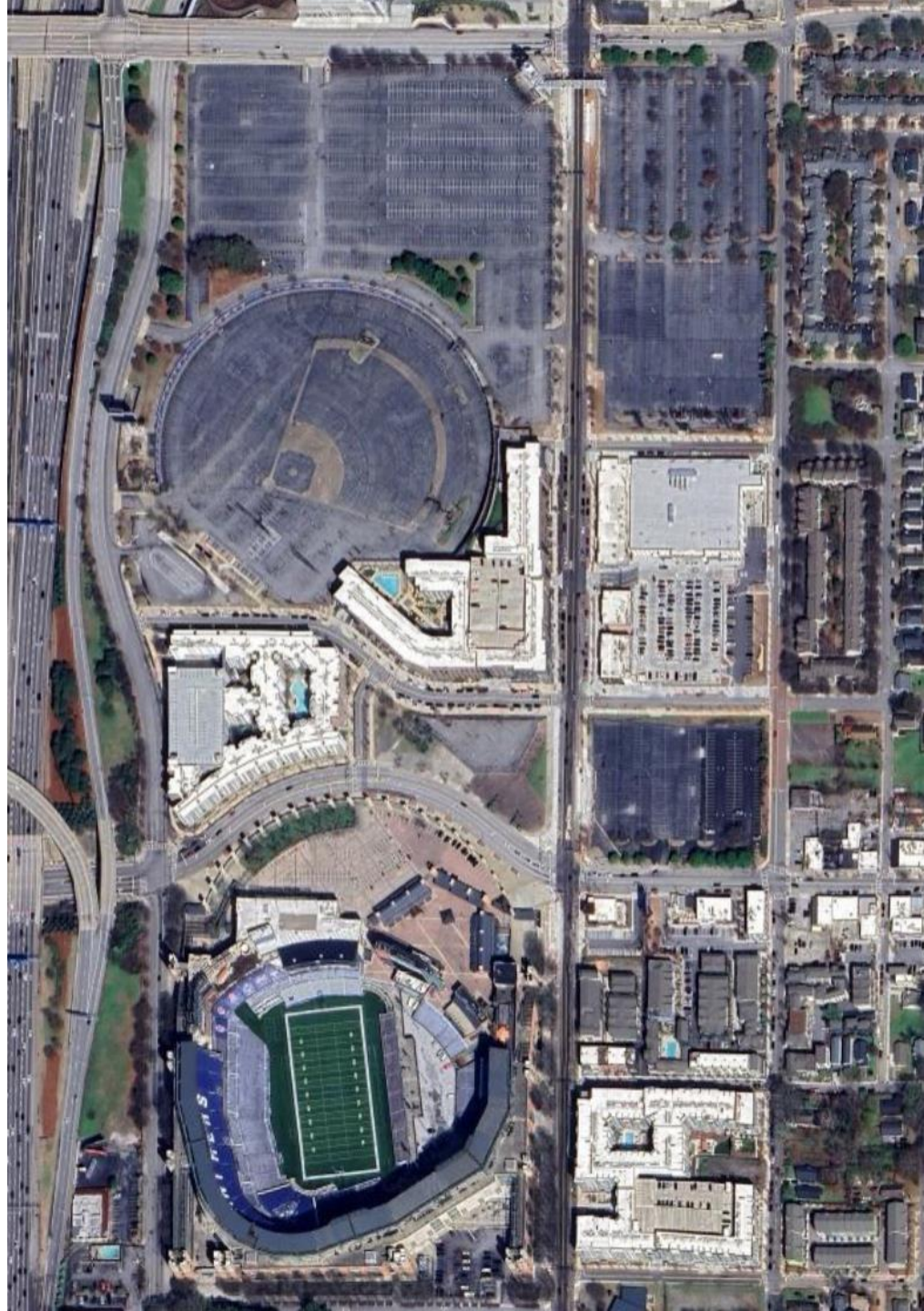


Growth Has Benefits...and Costs











Unify. Empower. Guide.



Plan Users

Local Governments

- Elected Officials
- Appointed Officials
- Staff Members

Local Planning/Government-Adjacent Entities

- CIDs
- DDAs
- Development Authorities

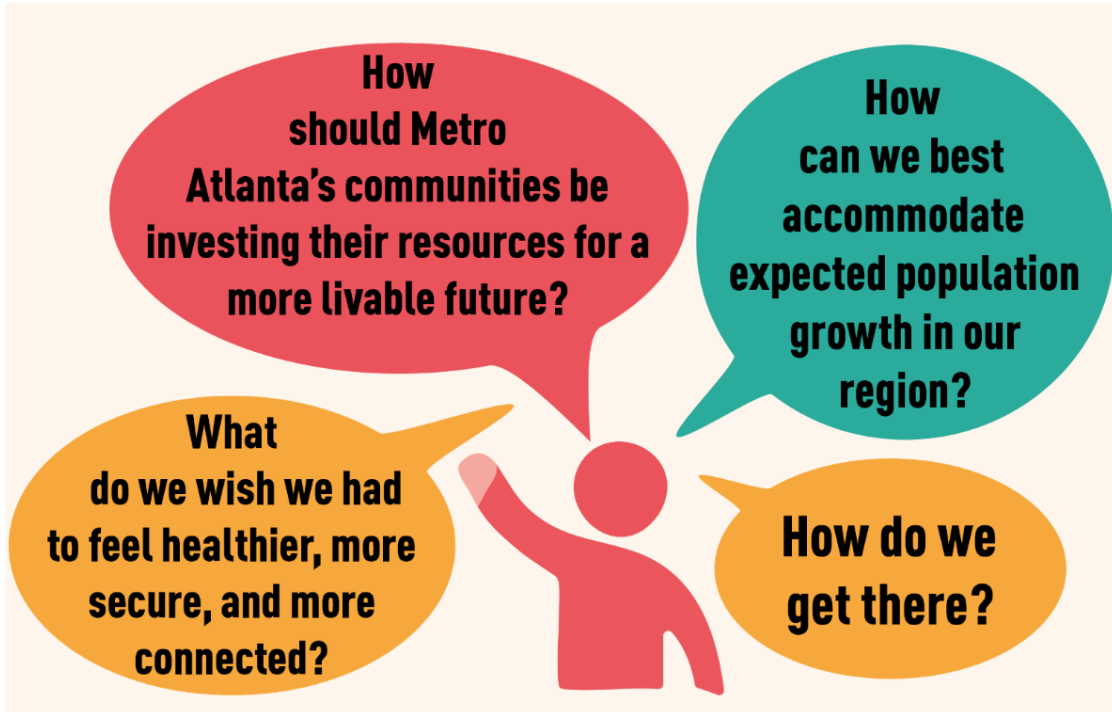
Local Economic Development Agencies

Regional Partner Agencies (e.g., ATL, MARTA, GDOT, BeltLine)

Nonprofits and Community-Based Organizations

ARC Leadership and Staff

What Do We Mean by Grow?

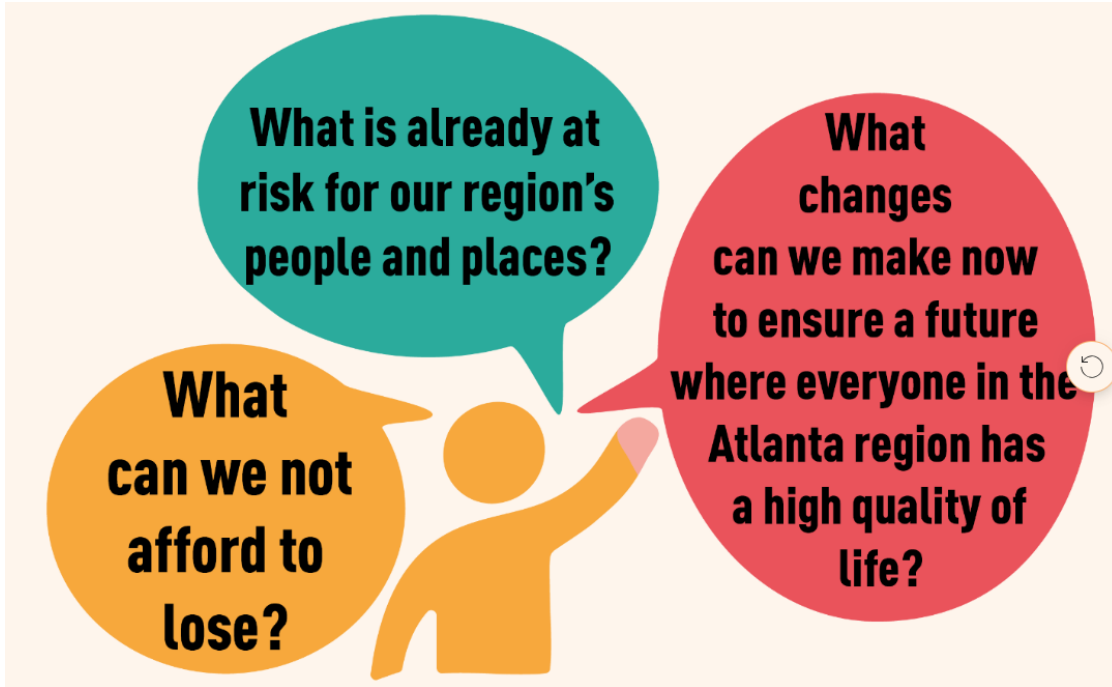


Some things we've heard...

Areas with:

- Underutilized infrastructure
- Multimodal transportation options
 - Existing and planned
- Positive risk/benefit ratio for communities
- Needs for resources and supports
 - Existing or expected

What Do We Mean by Protect?



Some things we've heard...

Areas that are:

- Built out or over-developed
- Undeveloped
- Sensitive/Vulnerable
 - Environmental
 - Social/Cultural
 - Economic
 - Historic

Initial Engagement



Who We've Talked To

Internal/External Advisory Committees

Future Land Use Working Group

Land Use Coordinating Committee

Transportation Coordinating Committee

Joint Forum – “Bridging for the Future”

- 70+ participants
- 40+ local governments across 12 counties
- Focused on Land Use/Transportation connections

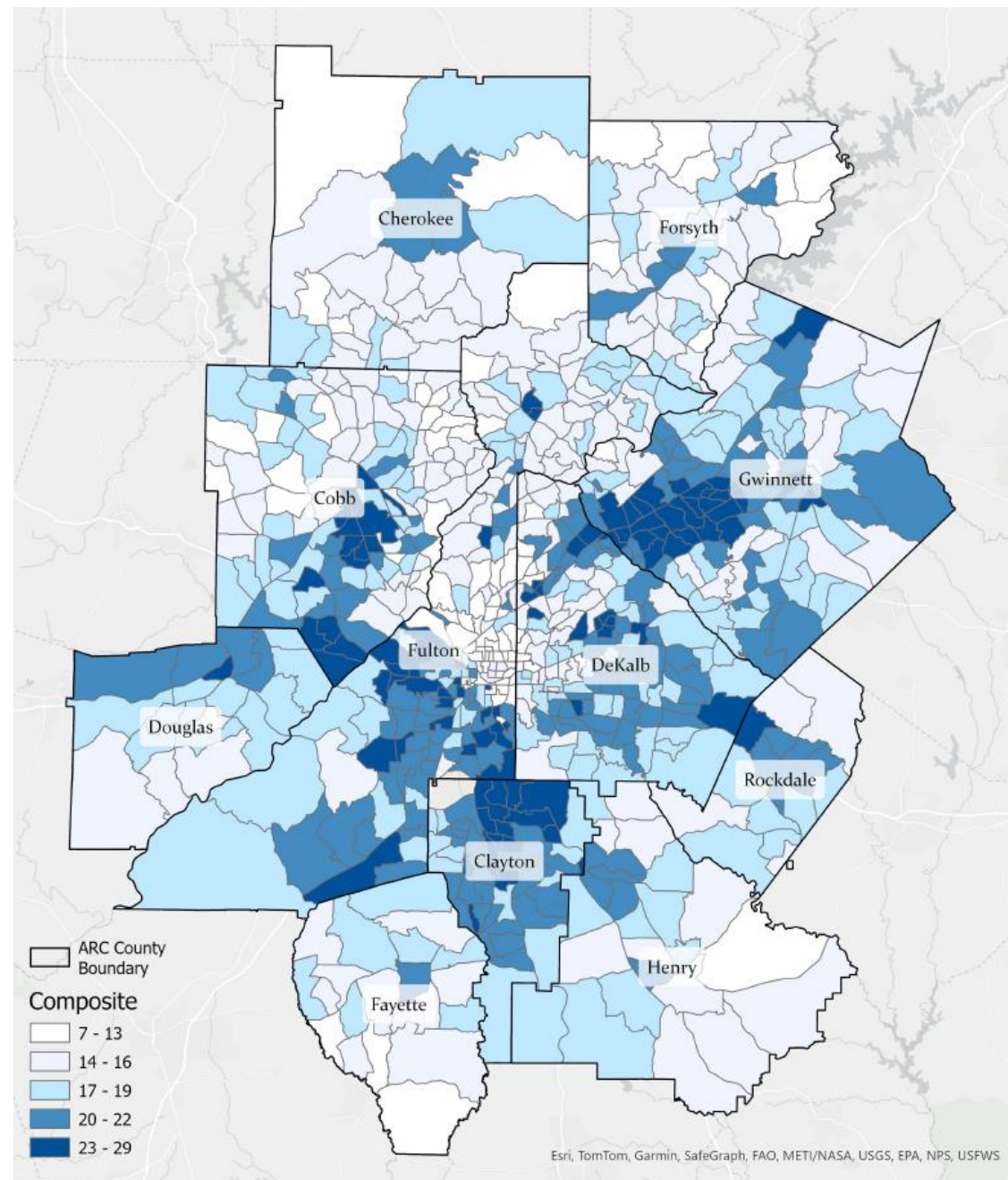
Targeted Engagement

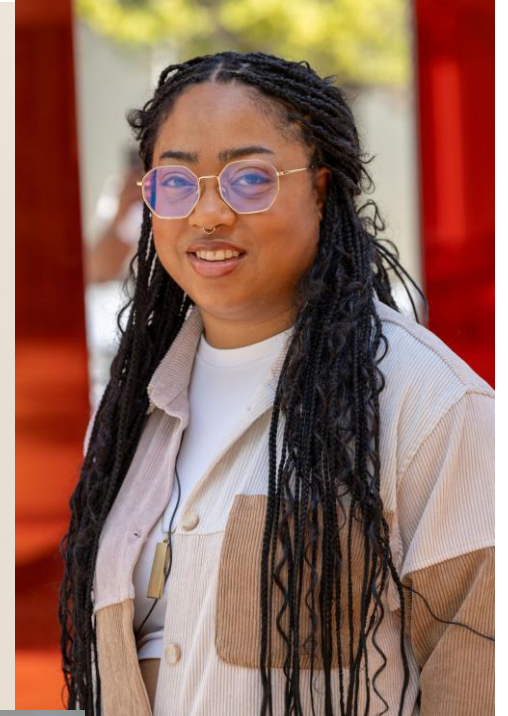
Community Forums and Community-Centered Design



Composite Equity Score Mapping

- Youth
- Older Adults
- Racial/Ethnic Minorities
- Foreign-born
- People with Disabilities
- Females
- Limited English Proficiency
- Low-Income





Charity Hamidullah and Olivia Haydel Senior Center



Growing Together Website



Place I Love

mark places that are meaningful to you and that you want to keep

[View Map](#)



Community Gems

mark places, resources, or assets that are important to the community that you want to keep

[View Map](#)



Places That Need Help

mark areas and places that need more love and attention

[View Map](#)

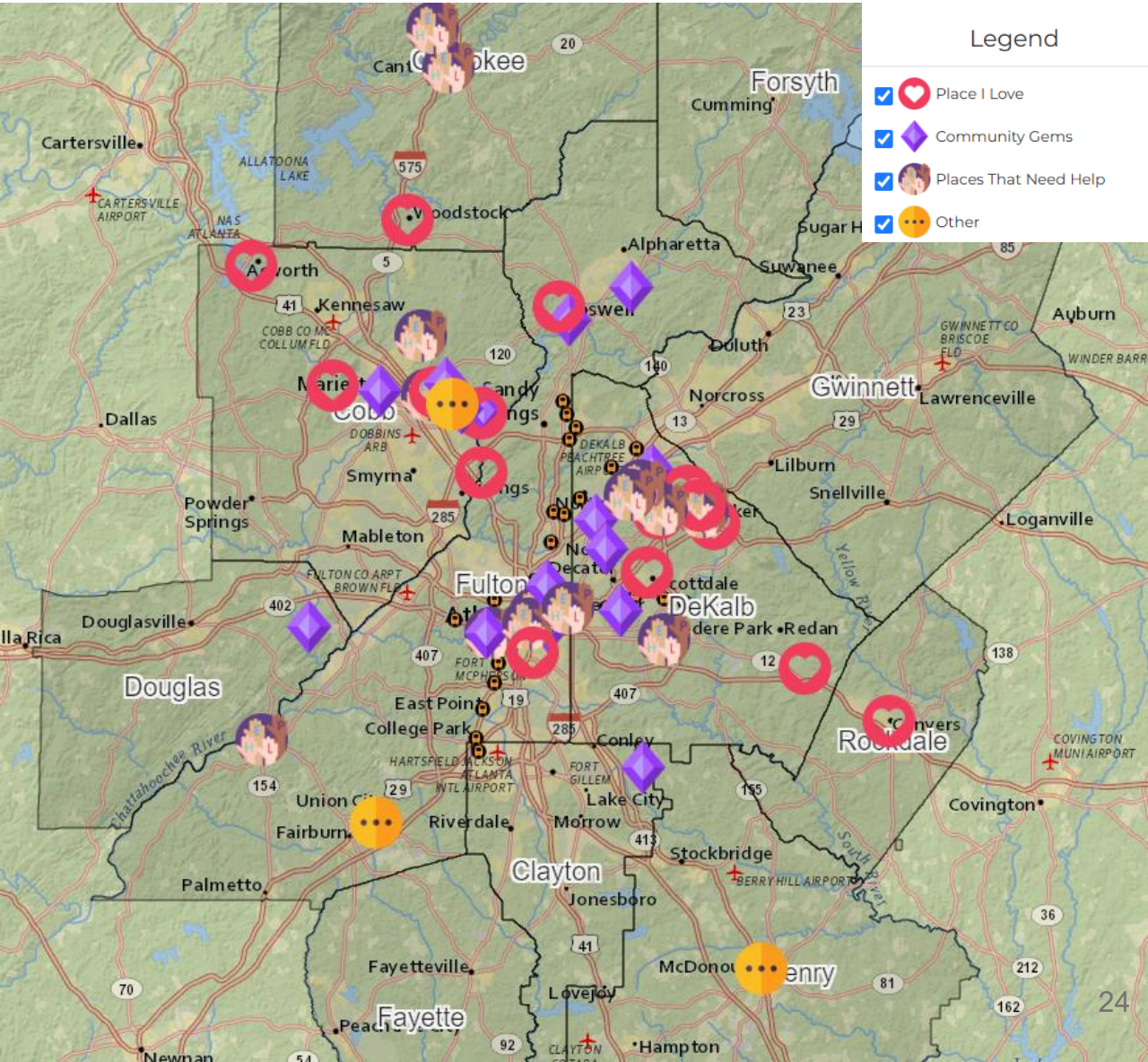


Other

Anything missing

[View Map](#)

Website QR Code



Board Feedback

Goals/Milestones

What are your community's goals or milestones for:

- **Growth?**
- **Protection?**

Examples:

- Redevelopment
- Transit-Oriented Development
- Housing supply
- Economic development
- Greenspace protection
- Tree canopy preservation
- Stream buffer restoration

Board Feedback

Challenges/Barriers

What is your community challenged by:

- **Historically?**
- **Right now?**
- **Looking ahead?**

Examples:

- Barriers to attracting quality growth
- Trouble managing development volume/pace
- Difficulty protecting sensitive areas
- Obstacles to community/leadership cohesion



THANK YOU!

Andrew Smith

Project Manager

ASmith@atlantaregional.org

Roshani Thakore

Community Engagement Lead

RThakore@atlantaregional.org

A decorative graphic consisting of several overlapping, semi-transparent, colorful rectangles in shades of blue, green, yellow, and red, arranged in a vertical, slightly staggered pattern.

**ONE
great
REGION**