

NEIGHBORHOOD NEXUS

SMART DATA + DATA VISUALIZATIONS = BETTER DECISIONS

MISSION

- ▶ Provide **data** and **data visualization** tools to support research, analysis, and community engagement
- ▶ **Empowering** the community and our partners to:
 - ▶ Examine **past**, **current**, and **forecasted** socioeconomic and demographic patterns
 - ▶ Assess correlations between **equity**, **health**, and **community** level conditions
 - ▶ Identify and develop **benchmarking** metrics
- ▶ With the ultimate goal of:

Making Better Community Decisions



Public Health

Socioeconomics drive health outcomes in powerful ways. Explore these connections for every county in Georgia, using data from the recently released 2015 County Health Rankings.

[View the map](#)

SMART DATA + DATA VISUALIZATIONS = BETTER DECISIONS

www.neighborhoodnexus.org

Let Neighborhood Nexus Help You:

 [Help](#)

 [Make A Map](#)

 [Download Census Profiles](#)

 [Download Raw Data](#)

 [Find Research Topics](#)


Using 100 US Metros	Using Census Tracts
Using Zip Codes	Using Georgia Cities
Using State Senate Districts	Using State House Districts
Using Georgia High Schools	Using Georgia Middle Schools
Using Georgia Elementary Schools	Using Early Education Indicators by Counties
Using Health Indicators by Counties	Using City of Atlanta's City Council Districts[
Using City of Atlanta's Neighborhood Planning Units (NPU)	Using City of Atlanta's Neighborhoods

 [Learn how to use the WEAVE mapping tool](#)



Let Neighborhood Nexus Help You:

 [Help](#)

 [Make A Map](#)

 [Download Census Profiles](#)

 [Download Raw Data](#)

 [Find Research Topics](#)

[ARC 20 Counties](#)

[Georgia Cities](#)

[SuperDistricts in Atlanta Metro area](#)

[City of Atlanta's Boundaries](#)

[State Senate Districts](#)

[State House Districts](#)

 [Don't Know Your District? Click here](#) to type in your address.



FIND YOUR DISTRICT

Need to know which District you live in (neighborhood, county, legislative, super district)? Type your **street address in the Gray bar**. Hit Enter. Click on the map and scroll down the popup window to identify your County, City, State Senate, State House, Super District, and if applicable, Atlanta neighborhood. Click the **"More Info"** link to go directly to the District's Fact Sheet.

Find Your Districts

The screenshot shows the Neighborhood Nexus web application interface. At the top, there is a search bar containing the address "40 Courtland St SE, Atlanta, Geo". Below the search bar is a map of the area around Georgia State University. A popup window titled "Neighborhood Nexus Geography" is open over the map, displaying the following information:

Neighborhood Nexus Geography	
County Name	Fulton County
County Profile	More info
Senate District	036
Senate Profile	More info
House District	058
House Profile	More info

At the bottom of the map, there is a logo for "esri" and the text "POWERED BY Esri, HERE, Garmin, INCREMENT P, NGA, USGS".

Already Know Your District? Click below to find the Profile or Fact Sheet.

ARC 20-COUNTY PROFILES

GEORGIA COUNTY FACT SHEETS

GEORGIA CITY FACT SHEETS

METRO ATLANTA SUPER DISTRICT FACT SHEETS

GEORGIA STATE SENATE FACT SHEETS

GEORGIA STATE HOUSE FACT SHEETS

CITY OF ATLANTA FACT SHEETS



DOWNLOAD FACTSHEETS

- COUNTIES
- CITIES
- STATE HOUSE and SENATE DISTRICTS
- SUPER DISTRICTS
- ATLANTA NEIGHBORHOODS
- ATLANTA CITY COUNCIL DISTRICTS

Find Your District | ARC Counties | City of Atlanta | Cities | Counties | State House Districts | State Senate Districts | Super Districts

- Click on a **County's** name to review & download the fact sheet.
- The fact sheet data is derived from the American Community Survey (ACS) 5-year dataset (2011-2015) and the ACS 5-year dataset (2006-2010) dataset.
- If you don't know your county, click **"Find Your District"** and type in your street address.
- Contact Us if you find any errors or omissions.

Show entries Search:

County	Cit(ies)
Appling County	Baxley - Graham - Surrency
Atkinson County	Pearson - Willacoochee
Bacon County	Alma
Baker County	Newton
Baldwin County	Milledgeville
Banks County	Alto - Baldwin - Gillsville - Homer - Lula - Maysville
Barrow County	Auburn - Bethlehem - Braselton - Carl - Statham - Winder
Bartow County	Adairsville - Cartersville - Emerson - Euharlee - Kingston - Taylorsville - White
Ben Hill County	Fitzgerald
Berrien County	Alapaha - Enigma - Nashville - Ray City
Bibb County	Macon-Bibb - Payne
Bleckley County	Allentown - Cochran

^

DOWNLOAD FACTSHEETS as PDFs

- Demographic
- Economic
- Employment
- Education
- Housing
- Crime
- Transportation
- Health

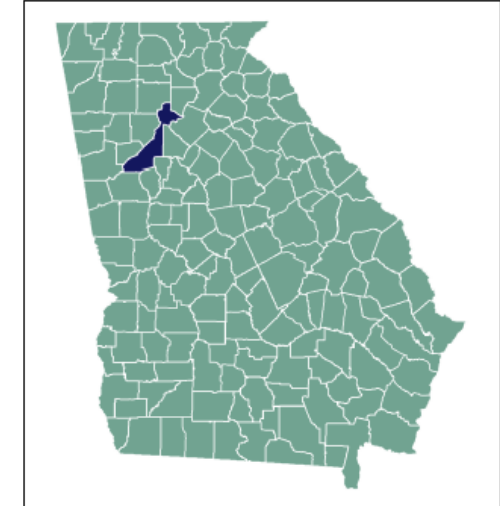
Fulton County Fact Sheet



Fulton County

Neighborhood Nexus is a community intelligence system providing over five thousand data variables, from the Census and many other sources, at different levels of geography. Bundled state-of-the-art visualization tools help users to understand and analyze these data. Our goal at Neighborhood Nexus is to support a network of community leaders and residents, government and businesses, advocates and service providers with the information, tools and expertise to make data-driven decisions, help meet challenges, leverage assets, and create new opportunities for policy intervention in community problems.

Neighborhood Nexus supports research, analysis, and community engagement. Our Partners use the data and tools to examine past and current socioeconomic and demographic patterns; assess correlations between the equity, health and climate of communities; identify and develop benchmarking metrics; and in so doing make better community decisions. For more information, please visit www.neighborhoodnexus.org.



Demographic

Sex and Age ¹	2011-15	2006-10	Change
Total Population	983,903	886,982	96,921 †
Male	48.6%	48.8%	-0.2% *
Female	51.4%	51.2%	0.2% *
Under 5 years	6.5%	7.0%	-0.5% *
5 to 9 years	6.5%	6.8%	-0.3% *
10 to 14 years	6.5%	6.4%	0.1%

VIEW INTERACTIVE PROFILES

FOR

20 COUNTIES of the ATLANTA METRO REGION

Atlanta Regional Commission's 20-County Region

- Click on the **County Profile** to view in-depth data, graphs, tables, and charts from the American Community Survey (ACS) 1-year dataset (2015) and other data sources.
- Click on the **County Fact Sheet** to download a PDF profile. The profile data is derived from the American Community Survey (ACS) 5-year dataset (2011-2015) and other data sources.
- **Contact Us** if you find any errors or omissions.

Barrow County

- + County Profile
- + County Fact Sheet

Bartow County

- + County Profile
- + County Fact Sheet

Carroll County

- + County Profile
- + County Fact Sheet

Cherokee County

- + County Profile
- + County Fact Sheet

Clayton County

- + County Profile
- + County Fact Sheet

Cobb County

- + County Profile
- + County Fact Sheet
- + County Quiz

Coweta County

- + County Profile
- + County Fact Sheet

DeKalb County

- + County Profile
- + County Fact Sheet

Douglas County

- + County Profile
- + County Fact Sheet

Fayette County

- + County Profile
- + County Fact Sheet

Forsyth County

- + County Profile
- + County Fact Sheet

Fulton County

- + County Profile
- + County Fact Sheet

Gwinnett County

- + County Profile
- + County Fact Sheet

Hall County

- + County Profile
- + County Fact Sheet

Henry County

- + County Profile
- + County Fact Sheet

COUNTY PROFILE TOPIC AREAS

INCLUDE

- PEOPLE
- ECONOMY
- EDUCATION
- HOUSING & HOUSEHOLDS
- CRIME
- COMMUNITY INVOLVEMENT
- TRANSPORTATION
- HEALTH

FULTON COUNTY, GA

County Formed: December 20, 1853

County Seat: Atlanta

Incorporated Cities: Alpharetta, Atlanta, Chattahoochee Hills, College Park, East Point, Fairburn, Hapeville, Johns Creek, Milton, Mountain Park, Palmetto, Roswell, Sandy Springs, South Fulton, and Union City



[Edit](#)

Select a topic:

[People](#)

[Economy](#)

[Education](#)

[Housing & Households](#)

[Crime](#)

[Community Involvement](#)

[Transportation](#)

[Health](#)

[How to Use Charts](#)

[Data Sources](#)

CURRENT POPULATION (2015)

1,010,562 persons

489,263 Male

521,299 Female

POPULATION CHANGE (2010-2015)

+9.1% increase

+5.2% increase for the State of Georgia

RACE & ETHNICITY (2015)

40.3% White

43.3% Black

6.9% Asian

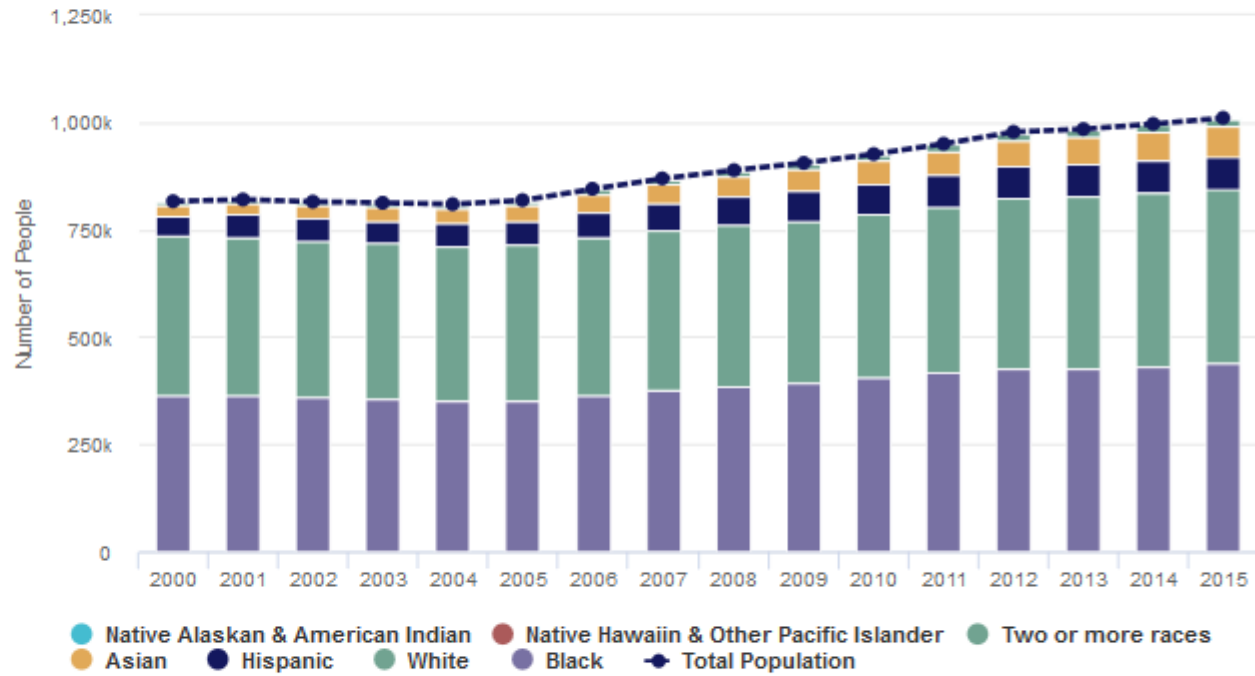
2.0% Other

7.5% Hispanic

Fulton County, GA

Population by Race & Ethnicity

2000 to 2015



MEDIAN HOUSEHOLD INCOME (2015)

\$59,911; +7.9% 1-year change

\$51,244 State of Georgia

UNEMPLOYMENT RATE (2015)

5.8%; -1.3% 1-year change

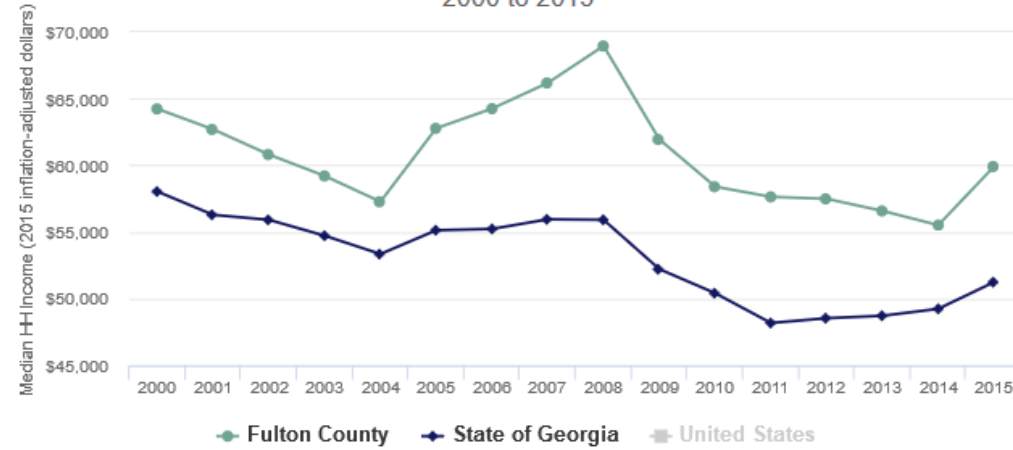
7.1% State of Georgia

POVERTY RATE (2015)

15.3% below poverty level

17.0% State of Georgia

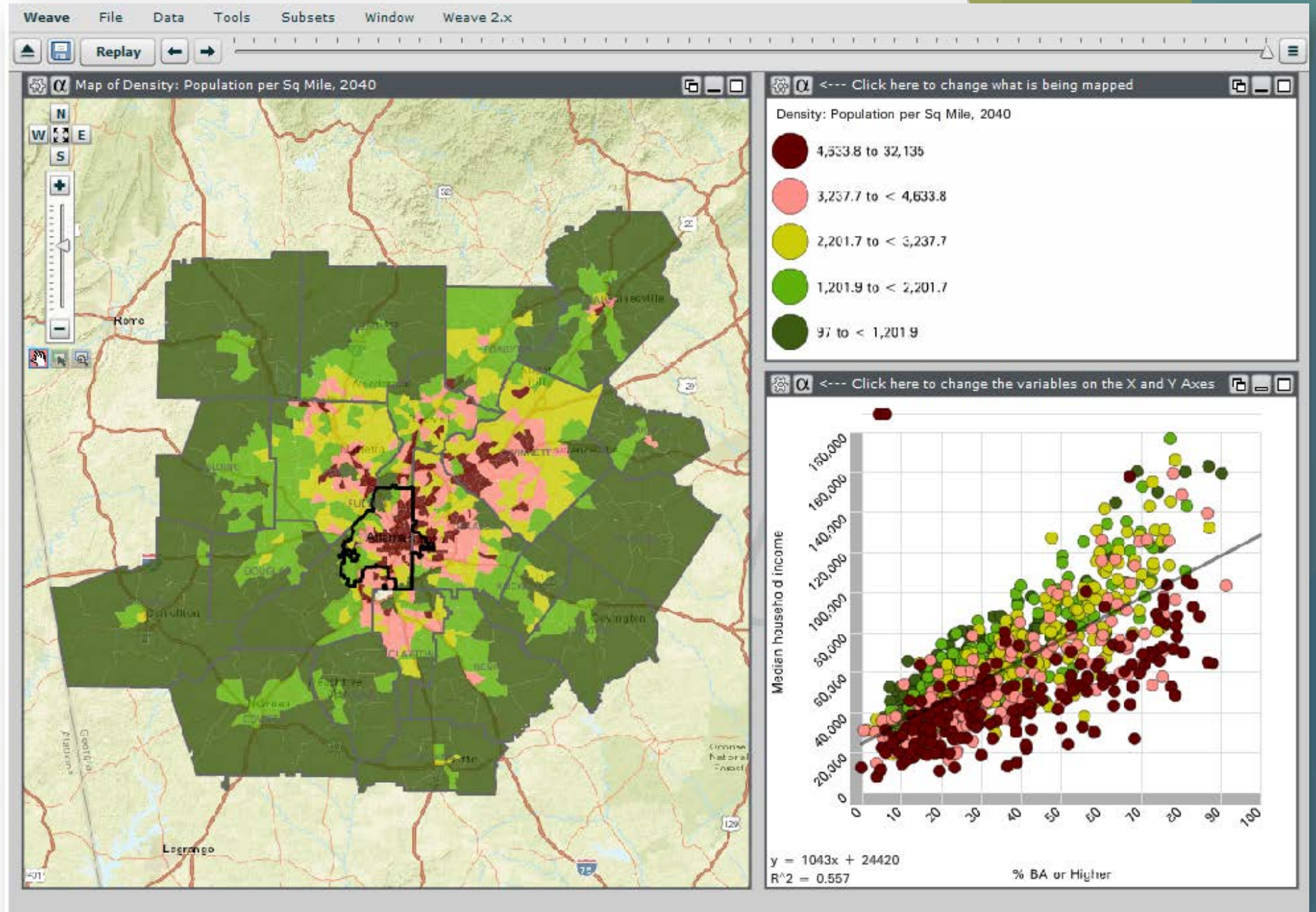
Fulton County, GA Median Household Income 2000 to 2015



Fulton County, GA Poverty Rate by Age Group



CREATE MAPS
AND
EXPLORE DATA
USING
INTERACTIVE
MAPPING TOOL



RESEARCH PROJECTS AND PARTNERS

Neighborhood Nexus has led data compilation, analysis, visualization, outreach, and training efforts in the projects listed below. In collaboration with clients, Neighborhood Nexus has developed interactive data-drive maps, asset maps, and web-based data dashboards. Data and tools developed through these projects are publicly accessible.

Please **contact us** if you are interested in working with Neighborhood Nexus on a project for your organization or business.

20 - County Dashboard



This project provides data for the 20 county ARC region. Data sources include U.S. Census (2011-2015), U.S. Dept. of Housing and Urban Development (2015), Georgia Dept. of Education (2015), Georgia Dept. of Public Health (2013-2014), FBI Uniform Crime Reports (2009-2015), and Atlanta Regional Commission Series 15 Population Forecasts (2015-2040).

City of Atlanta



This project provides data for the City of Atlanta's neighborhoods, NPUs, and City Council District. Data sources include U.S. Census (2010), 911 data (2013), Atlanta Police Dept. crime (2012-2103), City of Atlanta Housing Survey (2013), and City of Atlanta Code Enforcement (2013).

Community Foundation for Greater Atlanta



This project provides data for the Community Foundation for Greater Atlanta's 23-county service area. Data sources include U.S. Census (202-2015), Georgia Secretary of State (2008-2014), The Center for Neighborhood Technology (2015), ARC Metro Atlanta Speaks survey (2015), Governor's Office of Student Achievement (2015), Georgia Center for Nonprofits (2014), and the Georgia Dept. of Public Health (2015)

RESEARCH PROJECTS AND PARTNERS

GEEARS



.....

This project provides Statewide county-level data on early education indicators, births, and educational facilities. Data sources include the Governor's Office of Student Achievement (2012-2015), Georgia Dept. of Public Health (2010-2014), Early Education facilities (2013-2016), and the U.S. Census (2010-2014),

Get Georgia Reading



.....

This project provides data on every Public School System in the State of Georgia. Data sources include the Governor's Office of Student Achievement (2014-2015) and the Georgia Dept. of Public Health (2010-2014).

Georgia Municipal Association



.....

This project provides data on every City in the State of Georgia. Data sources include the the U.S. Census (2010-2014), U.S. Census Longitudinal Employer-Household Dynamics (2015), Georgia Dept. of Revenue property tax digest (2015), and the Georgia Dept. of Transportation road mileage data (2015)

United Way of Greater Atlanta



**United Way of
Greater Atlanta**

.....

DATA DASHBOARDS

Metro Atlanta Affordable Housing Tool

1. Type in a city or county name:

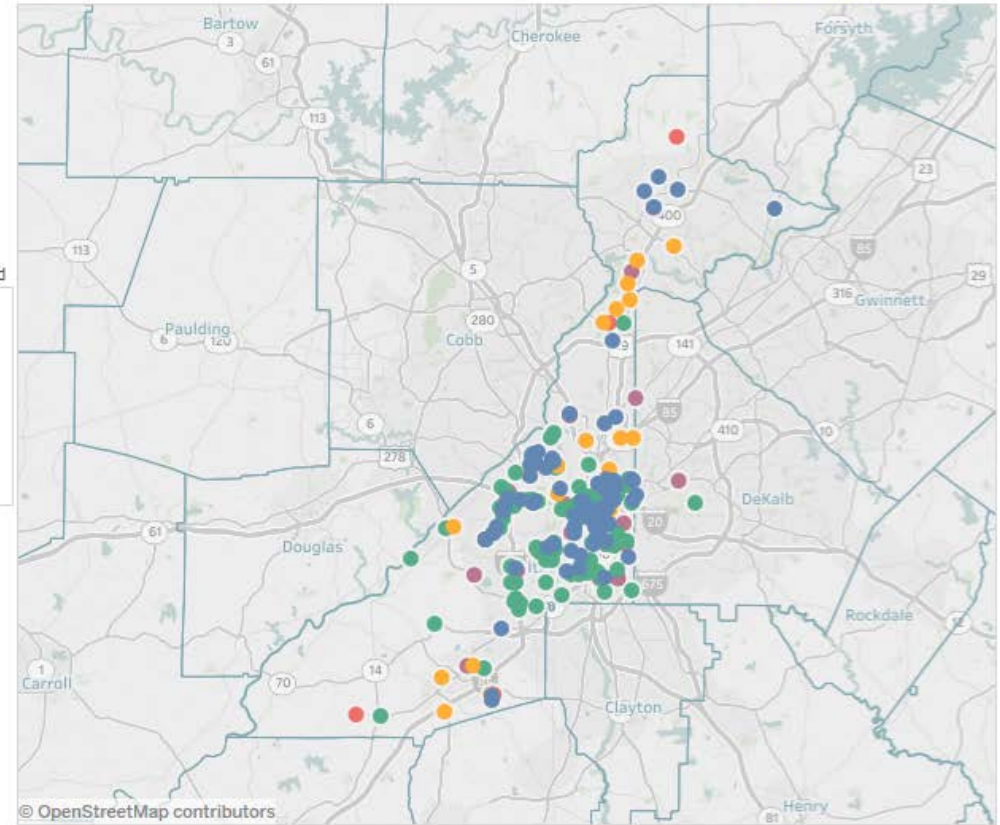
2. Change the dates on the date slider to show subsidies by expiration date:
 12/31/2013

3. Filter the map and table by type of subsidy by clicking on a color:
 If map is blank, click on "Multiple types of subsidies"
 To show all colors, click on the white space next to the legend

- LIHTC ●
- Section 8 ●
- FHA ●
- HOME ●
- Section 202 ●
- Multiple types of subsidies ●
- Unknown units/type of subsidy ●

Number of subsidies and subsidized units: Fulton
 (based on expiration date selected in date slider*)

	Subsidies	Subsidized units
LIHTC	179	23,163
Section 8	70	9,718
FHA	87	13,650
HOME	11	800
Section 202	12	831



Property information: Fulton

Select a point(s) on the map to filter the table below, or select a property in the table to highlight on the map. Hover over the table to show subsidy detail.

Property Name	Subsidies	Total units	LIHTC	LIHTC 2**	S8	FHA	FHA 2**	HOME	HOME 2**	S202	S202 2**
420 - 422 ATWOOD ST SW	1	2	2	0	0	0	0	0	0	0	0
426 - 428 ATWOOD ST SW	1	2	2	0	0	0	0	0	0	0	0
432 - 434 ATWOOD ST SW	1	2	2	0	0	0	0	0	0	0	0

*Subsidies without specified start/end dates are not included
 Data source: National Housing Preservation Database

**Some properties have a second LIHTC, FHA, HOME, or Section 202 subsidy

QUESTIONS?

Visit our site at:

www.neighborhoodnexus.org

Contact us at:

Bernita Smith, Director

bsmith@atlantaregional.com

Erik Woodworth, Data Scientist

ewoodworth@atlantaregional.com