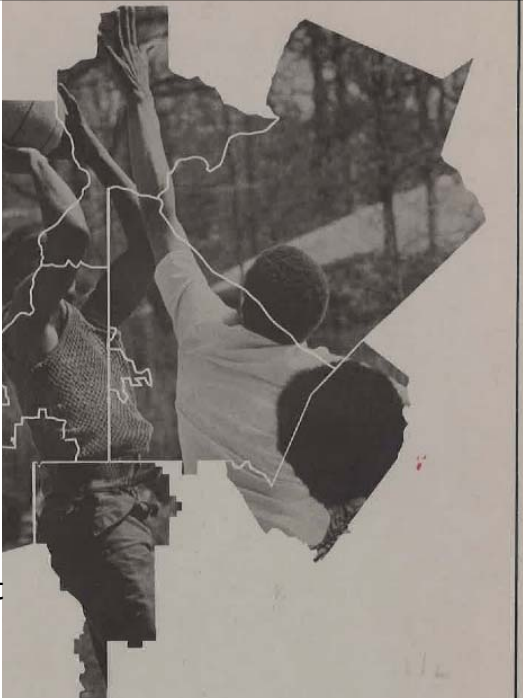


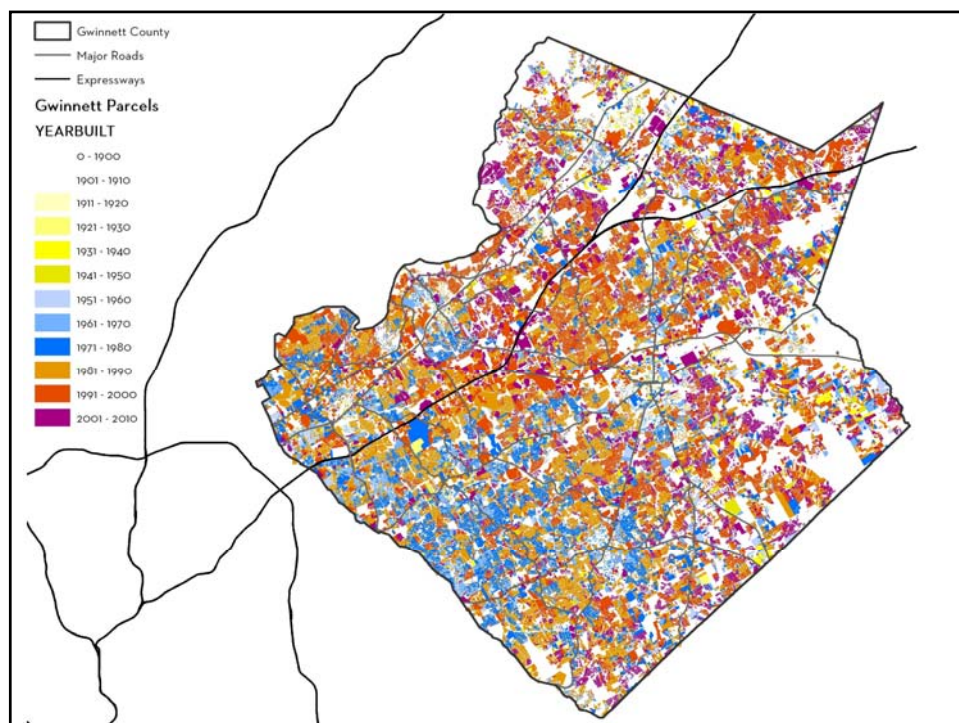
Pump House, Cascade Springs, Fulton County
Source: Areawide Outdoor Recreation Plan in the Atlanta Region 1976



regional impact + local relevance

- 1954 Regional Development Plan
- 1962 Regional Development Plan
- 1963 Nature Preserves Plan
- 1972 Chattahoochee Recreation Area Study
- 1976 Nature Preserves Plan (& 1979 Status Report And Update)





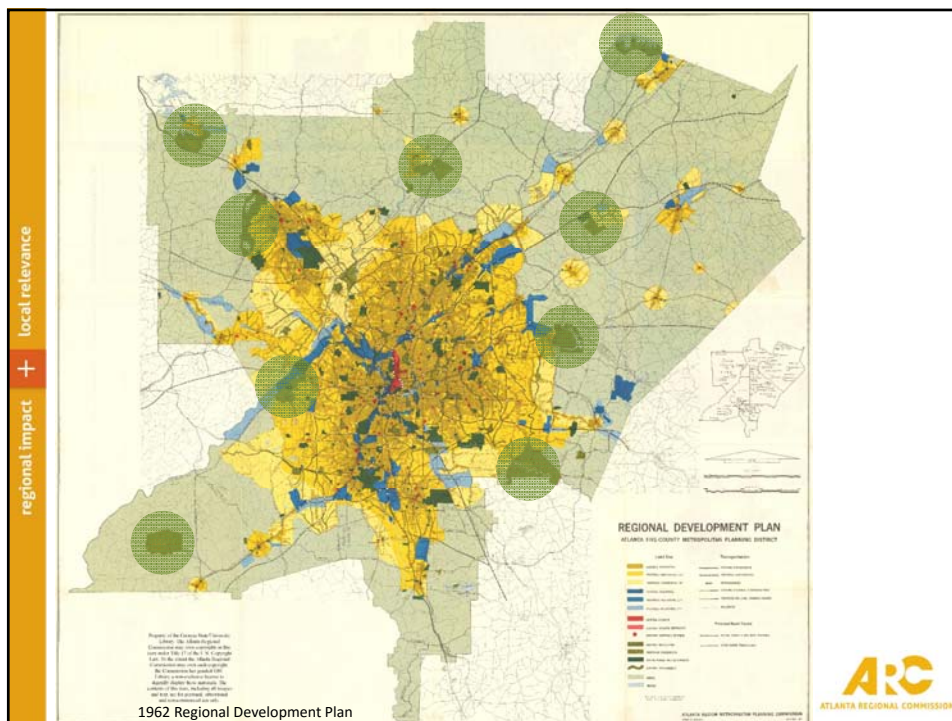
REGIONAL DEVELOPMENT PLAN
(Lands Use, Population, and Transportation Planning Study)

LEGEND

Symbol	Description
Yellow	Urban Areas
Blue	Water Bodies
Green	Agricultural Land
Brown	Forested Land
Black	Major Roads and Highways
Red	State Routes
Orange	County Routes
Grey	Other Land Use

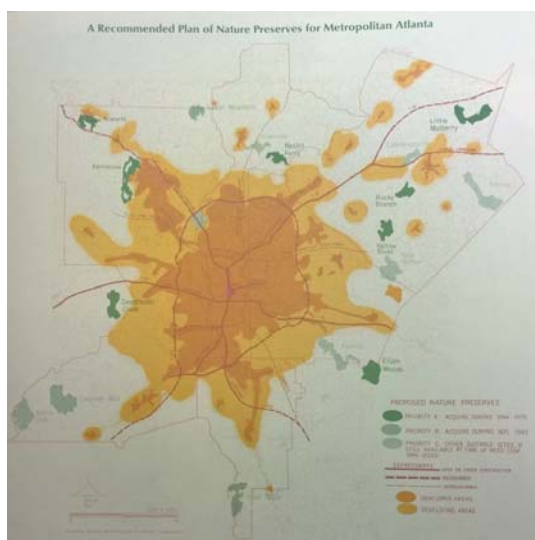
Scale: 1 inch = 10 miles

Inset Map: Shows the location of the study area within the Eastern United States.



1963 Nature Preserves Plan

Within, or near, the five metropolitan counties there are eighteen large areas of suitable land totaling slightly over 35,000 acres...



1963 Proposed Nature Preserves

local relevance

+

regional impact

- Nesbit Ferry (Fulton)
- Sweetwater Creek (Douglas)
- Yellow River (Gwinnett)
- Rocky Branch (Gwinnett)
- Little Mulberry (Gwinnett)
- Elijah Woods (DeKalb)
- Acworth Lake (Cobb)
- Kennesaw Mountain (Cobb)
- Sweat Mountain (Cobb)
- Cochran Mill (Fulton)
- Flint River (Clayton)
- Long Island (Fulton)
- Riverside (Fulton)
- Panola (DeKalb)
- New Bethel (Gwinnett)
- White Oak Creek (Fulton)
- Lawrenceville (Gwinnett)
- Alcovy River (Gwinnett)

1963 Proposed Nature Preserves

local relevance

+

regional impact

- Nesbit Ferry (Fulton)
- Sweetwater Creek (Douglas)
- Yellow River (Gwinnett)
- Rocky Branch (Gwinnett)
- Little Mulberry (Gwinnett)
- Elijah Woods (DeKalb)
- Acworth Lake (Cobb)
- Kennesaw Mountain (Cobb)
- Sweat Mountain (Cobb)
- Cochran Mill (Fulton)
- Flint River (Clayton)
- Long Island (Fulton)
- Riverside (Fulton)
- Panola (DeKalb)
- New Bethel (Gwinnett)
- White Oak Creek (Fulton)
- Lawrenceville (Gwinnett)
- Alcovy River (Gwinnett)

1972 Chattahoochee Recreation Area Study



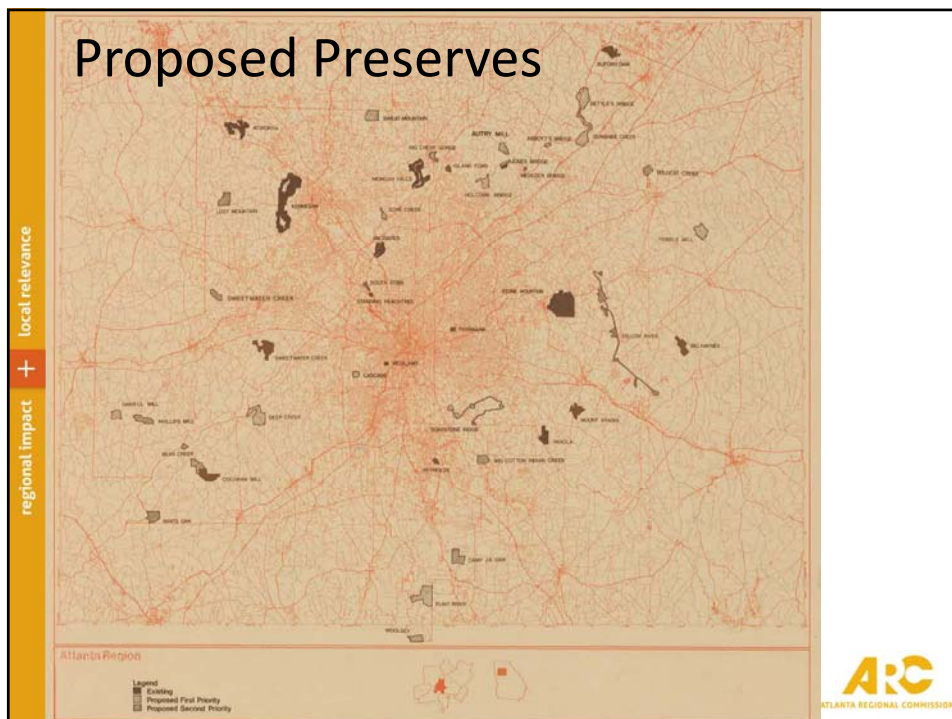
- South Cobb
- Sope Creek
- Big Creek Gorge
- Holcomb Bridge
- Medlock Bridge
- Abbots Bridge
- Suwanee Creek
- Settle's Bridge

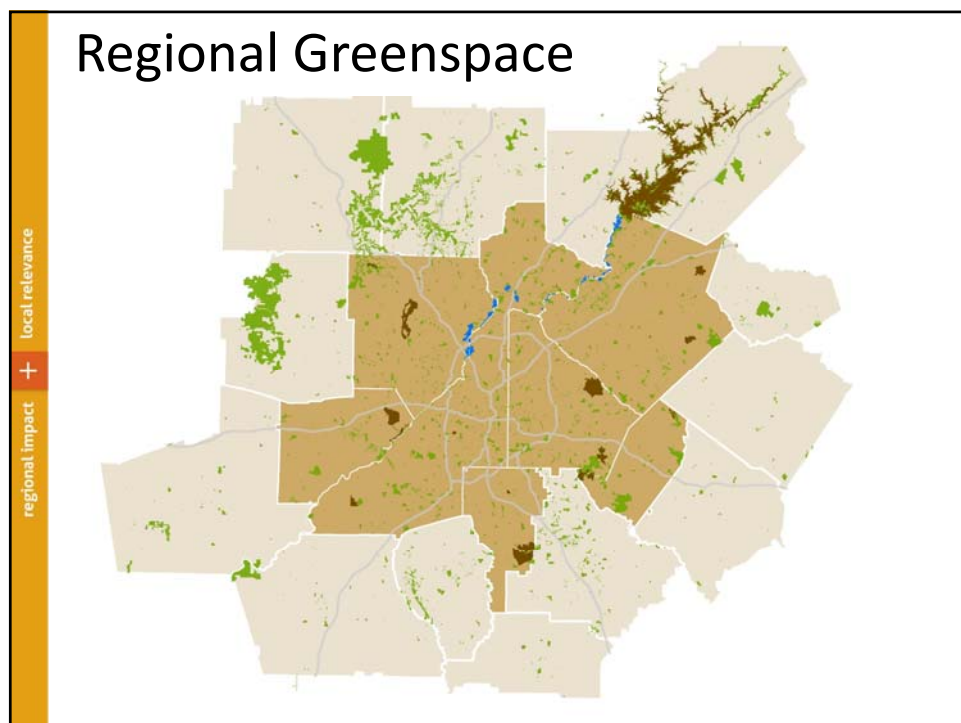
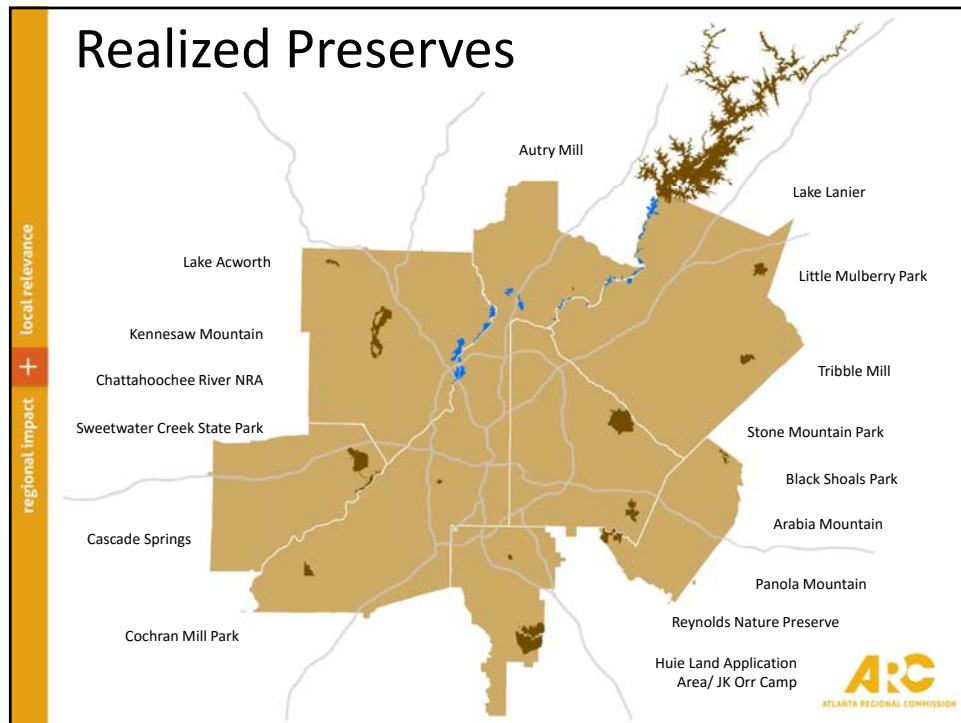
1976 Nature Preserves Plan

- | | |
|--------------------------------------|------------------------------|
| • Mount Arabia (DeKalb) | • Autry Mill (Fulton) |
| • Big Haynes Creek (Rockdale) | • Deep Creek Nature Preserve |
| • Reynolds Nature Preserve (Clayton) | • Tribble Mill (Gwinnett) |
| • Daniell Mill (Douglas) | • Shoal Creek (Clayton) |
| • Phillips Mill (Douglas) | • Woolsey (Clayton) |
| • Camp JK Orr (Clayton) | • Lost Mountain (Cobb) |
| • Cascade Springs (Fulton) | • Wildcat Creek (Gwinnett) |
| • Soapstone Ridge (DeKalb) | • Bear Creek (Fulton) |

1976 Nature Preserves Plan

- Mount Arabia (DeKalb)
- Big Haynes Creek (Rockdale)
- Reynolds Nature Preserve (Clayton)
- Daniell Mill (Douglas)
- Phillips Mill (Douglas)
- Camp JK Orr (Clayton)
- Cascade Springs (Fulton)
- Soapstone Ridge (DeKalb)
- Autry Mill (Fulton)
- Deep Creek Nature Preserve
- Tribble Mill (Gwinnett)
- Shoal Creek (Clayton)
- Woolsey (Clayton)
- Lost Mountain (Cobb)
- Wildcat Creek (Gwinnett)
- Bear Creek (Fulton)





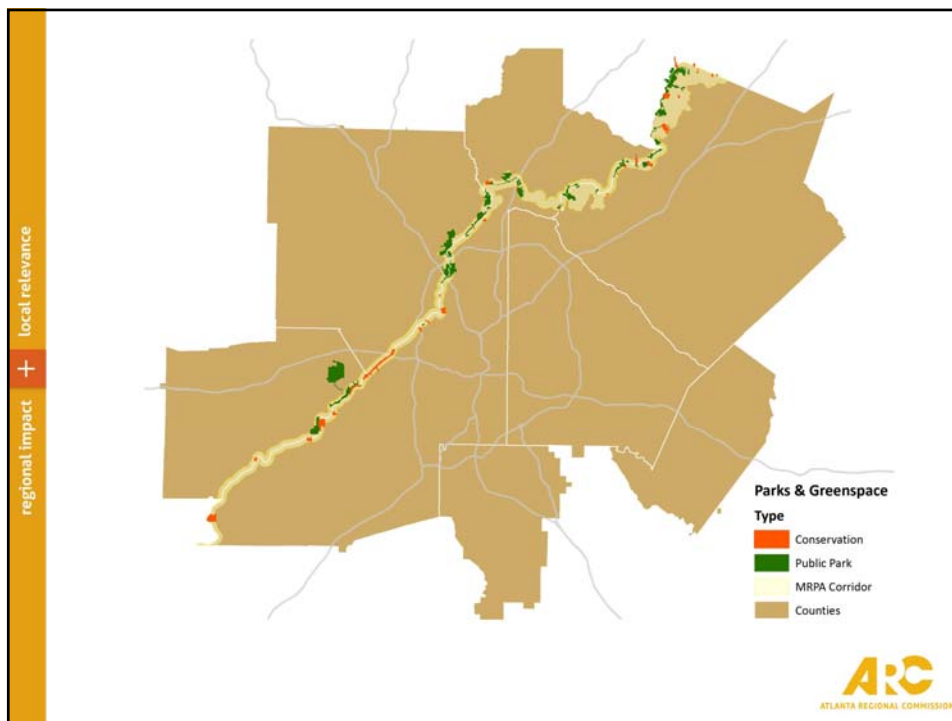
Greenways-Blueways Study



Recreation and Parkland Addressed in Past Studies

- 1970: U. S. Bureau of Outdoor Recreation Study
- 1972: Conservation and River Corridor Studies
- 1998: Chattahoochee River from Peachtree Creek to West Point Lake Study





Greenways-Blueways Study

- In response to comments by Chattahoochee River Corridor stakeholders, both at a general meeting in June and in individual meetings
- Interest in our greater involvement in recreation and greenspace along the Chattahoochee River

Chattahoochee River Corridor

- Required under State law passed in 1973
- 2000 feet on both sides of the River from Buford Dam to downstream limits of Region
- Limits on land disturbance and impervious surface based on land conditions, buffers along the River and tributary streams
- Don't hear about it because it is working




local relevance

+

regional impact

Comprehensive View of Access and Resources

- Catalog both existing resources and committed projects
- Identify potential access, recreational and greenspace opportunities
- In one document to provide information and opportunity for coordination throughout the Corridor




local relevance

+

regional impact

Upstream of Peachtree Creek

- Extensive existing recreation and greenspace
- New projects being developed or proposed
- CRNRA plays major role
- Meet with Local Governments, CRNRA, others to identify, map out existing and proposed facilities, as well as available land
- To help with coordination, planning



Downstream of Peachtree Creek

- Fewer existing facilities, less access
- Opportunities to protect land, promote recreation
- Meet with Local Governments, NPS, other groups to identify potential greenspace, recreation and access opportunities
- Develop framework for coordinated program



Proposed Final Product

- Inventory of all existing and proposed greenspace, parks and recreation facilities
- A resource to assist with coordination of activities
- And the development of new opportunities



Questions, Comments and Feedback

- Contact Info:

Jim Santo

404-463-3258

jsanto@atlantaregional.com

local relevance

+

regional impact

