

Lifelong Inman Park

February 15, 2018



Inman Park Neighborhood

Location:

1.5 miles east of Downtown Atlanta
First planned neighborhood – 1880's
Rich History

Population:

4,277 individuals - 2,491 households
55+ 10% of total population*



Lifelong Inman Park

Getting Started - ARC Lifelong Community Initiative

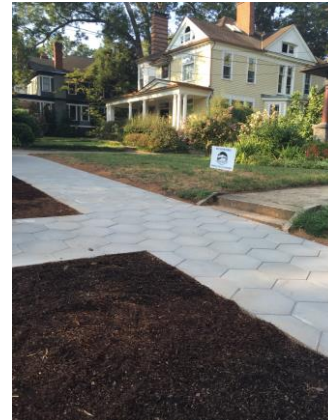
- ◆ Survey & Community Meeting - 2013
- ◆ Lifelong IP Interest Group
- ◆ IPNA Committee Status - July 2015

This Committee shall focus on issues that affect the livability of Inman Park with a special emphasis on our aging residents, addressing especially housing, transportation, health, access, safety and security

Lifelong Inman Park

Committee Activities:

- Adopted Lifelong Framework
- Held *Aging Well* Sessions
- Completed community surveys
- Aligned with existing committees
- Initiated the *Walkable IP campaign*
- Worked with housing developer



Lifelong Inman Park Plan 2016 - 2017

Developing an Implementation Plan

- Inman Park Neighborhood Association
- City of Atlanta District II - Councilmember Kwanza Hall
- TSW Architects and Planners
- Community Input
- Committee Participation

Lifelong IP Plan

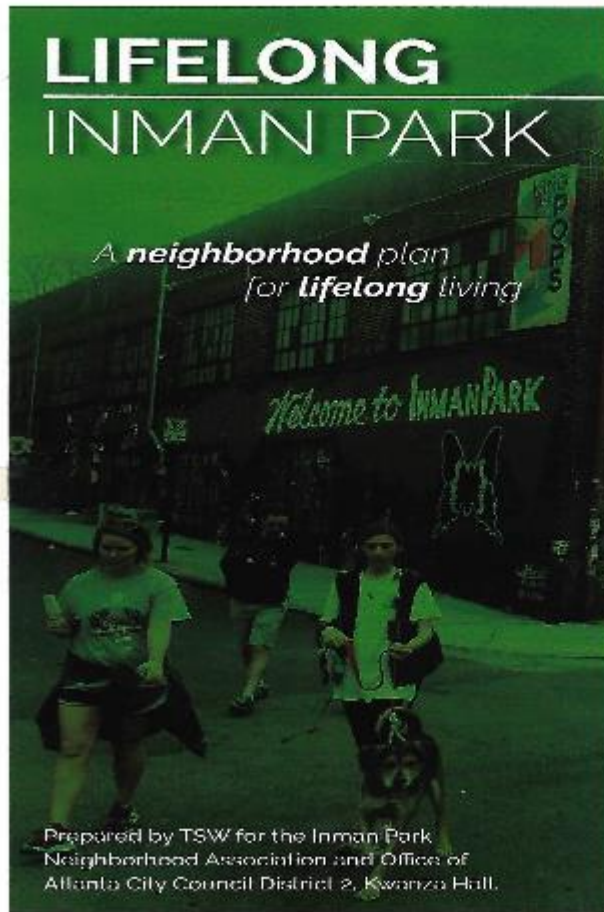
Areas of Concern

- Housing Options
- Access to Services and Information
- Mobility and Accessibility
- Social Interaction and Engagement

Existing Conditions - Goals - Policies - Projects

Four Committee Work Plans

Lifelong Inman Park Plan



**IPNA Approved:
July 19 2017**

“to guide Inman Park’s transformation into a model Lifelong Community by incorporating the needs of older residents into all aspects of community planning, development and living”

City of Atlanta Approval



July 19, 2017

Summary

What has worked/What is working?

- ✓ **Beginning with neighborhood input and concerns**
- ✓ **Including neighbors and leaders with passion for issue knowledge of neighborhood and wide range of expertise**
- ✓ **Aligning with existing IPNA committees**
- ✓ **Developing the Lifelong Inman Park Plan and using the process to engage the committee and neighborhood**

Summary

What has/is working?

- ✓ **Providing informational sessions – link to lifelong message**
- ✓ **Claiming the message/claiming the issue – “remaining in this community”**
- ✓ **Focusing discussion on “livability for all ages”**
- ✓ **Support from Inman Park Neighborhood Association**
- ✓ **Support from District II City of Atlanta Office**

Lifelong Inman Park

Cathie Berger

404-584-6309

lifelong@inmanpark.org