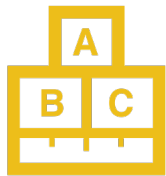




State of Education in Metro Atlanta: Baseline Report 2017

Community Indicators



Kindergarten
Readiness

1



3rd Grade Reading
Proficiency

2



8th Grade Math
Proficiency

3



High School
Graduation

4



Post-Secondary
Enrollment

5



Post-Secondary
Completion

6

Kindergarten Readiness



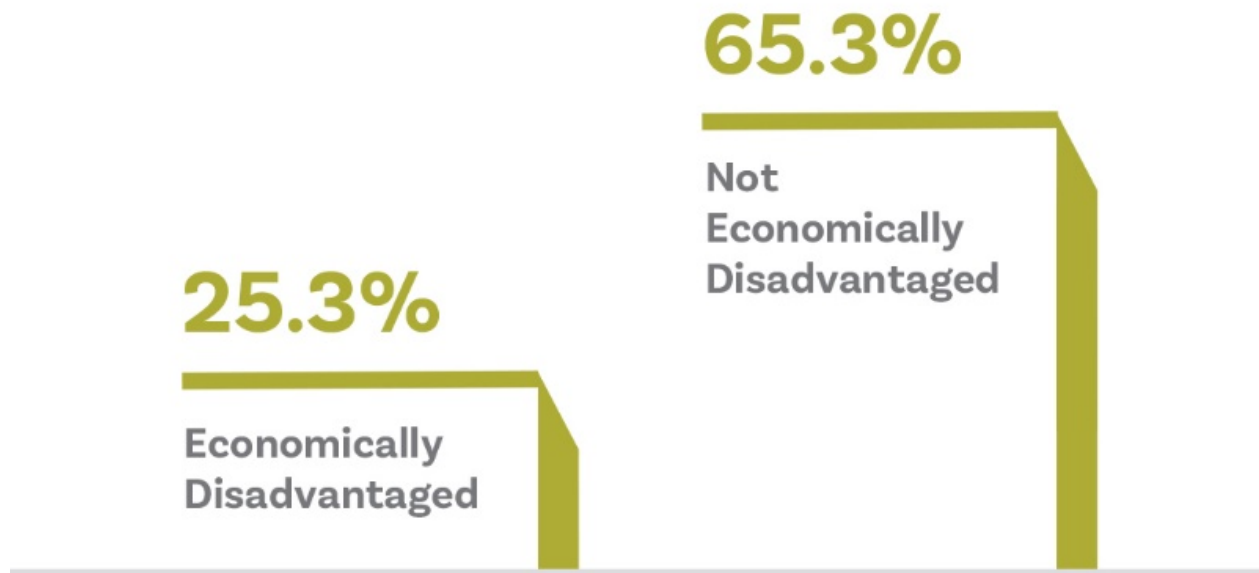
20% of children in the five-county area attend a “high-quality” center.”

3rd Grade Reading Proficiency



40% of children are reading proficiently by the end of third grade.

Percent of Students Proficient and Above Grade Level on 3rd Grade Reading by Economic Subgroup



Source: GOSA, Enrollment by Subgroup Programs, 2014-2015

8th Grade Math Proficiency



38% of children are proficient in math by the end of eighth grade

High School Graduation



79% of student graduate high school
in four years

Post-Secondary Enrollment



75%

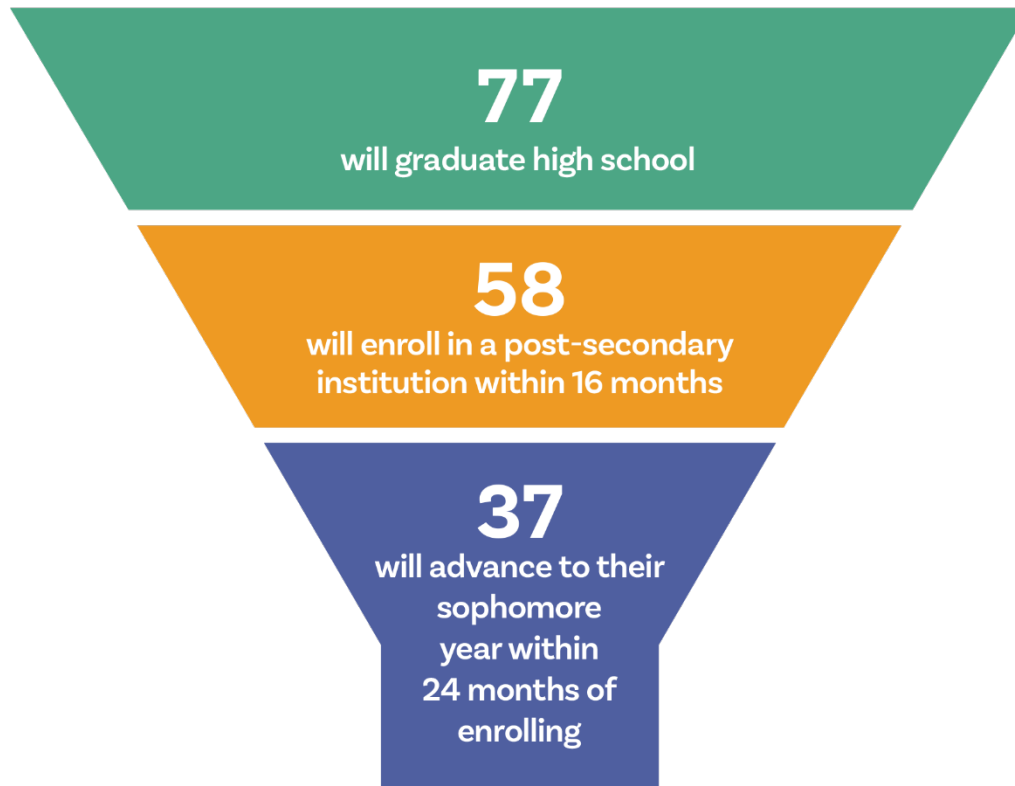
of the 2013 graduating class was
enrolled in a post-secondary institution
after 16 months.

Post-Secondary Attainment



31% of the 2010 graduating class had earned
a post-secondary degree or credential
by 2015

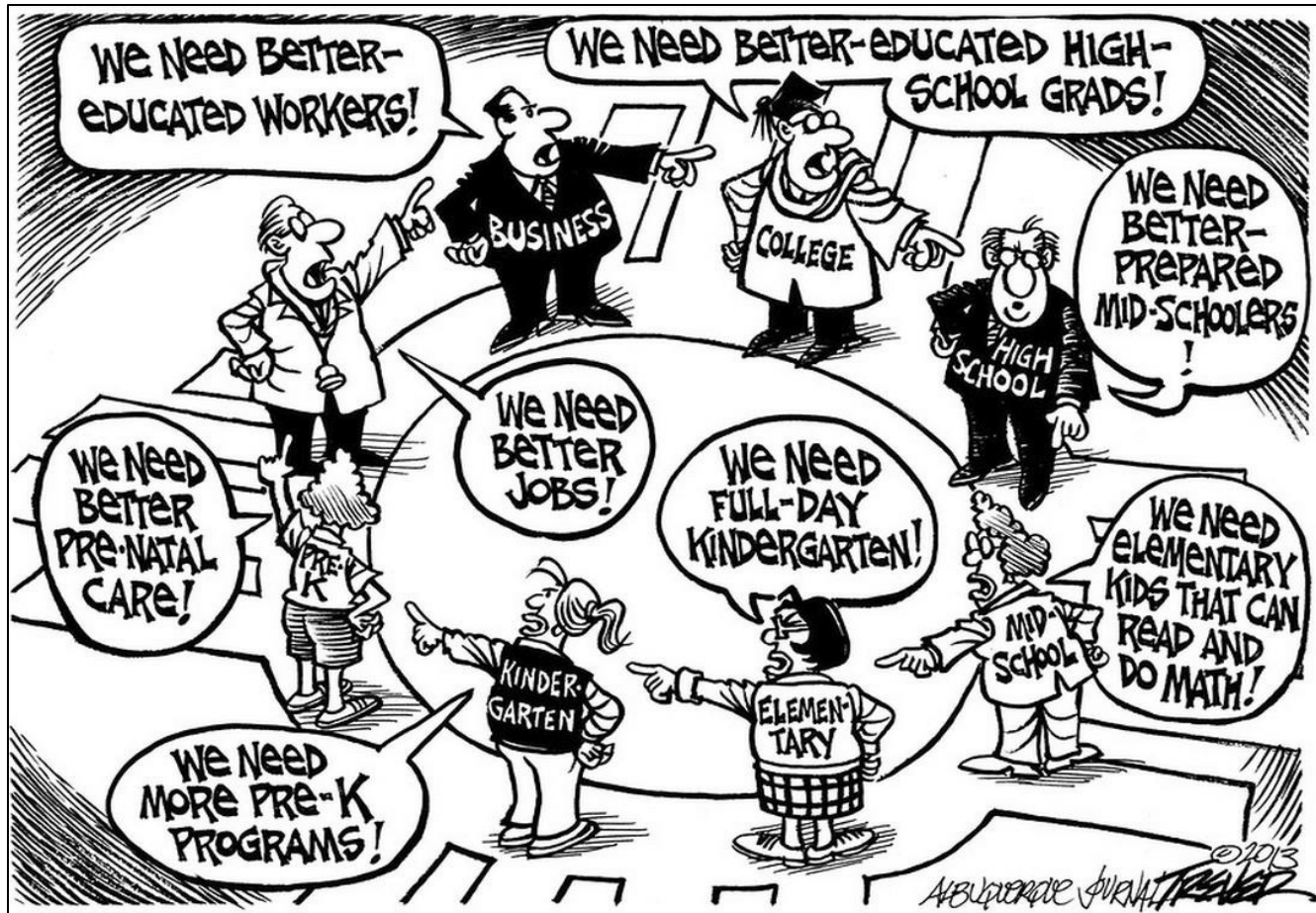
Of 100 Ninth Graders:



Where are the missing 63?

Source: GOSA, C-11 (class of 2013 data) and C-12 (class of 2010 data) reports. This information is provided by GA-AWARDS (Georgia's Academic and Workforce Analysis and Research Data System).

The Challenge

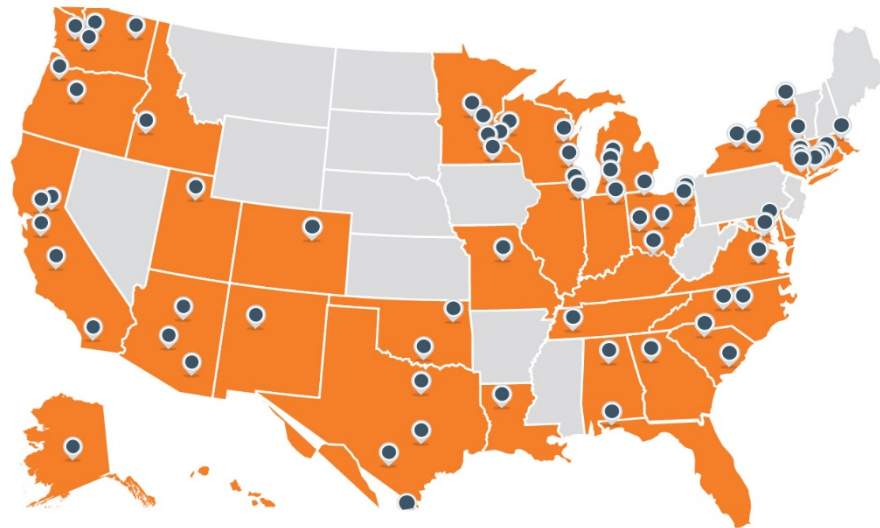


Collective Impact Model Is Reaching Scale



COMMUNITY PARTNERSHIPS

building local infrastructure to improve education outcomes for every child



10,800+
ORGANIZATIONS
ENGAGED



32

STATES
+ DISTRICT OF
COLUMBIA

© StriveTogether

Learn4Life

Progress in Key Cities

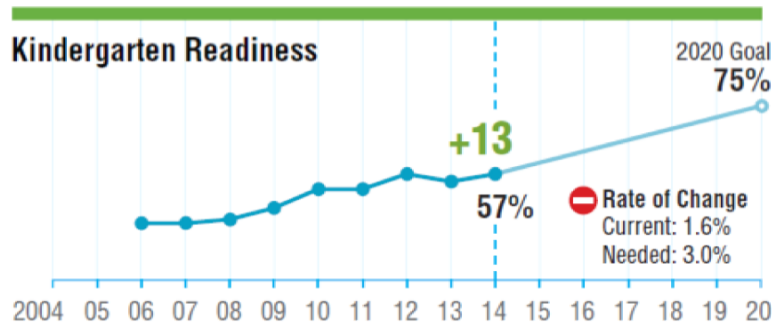
Cincinnati Public Schools

CORE INDICATORS

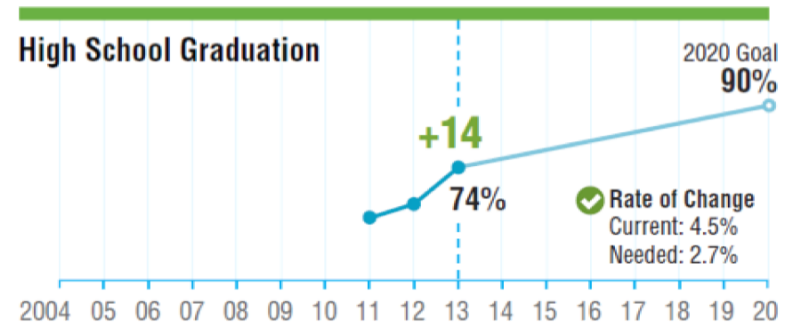


Cincinnati | Covington | Newport

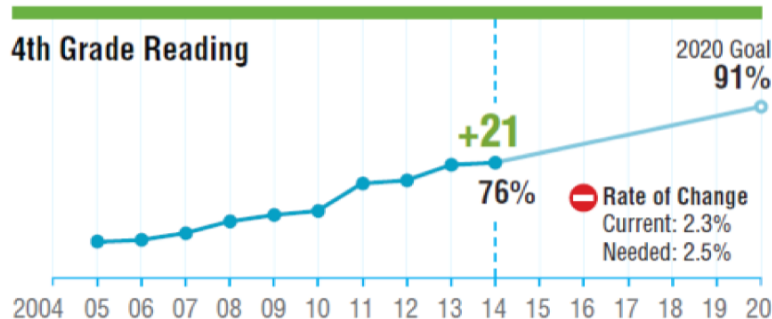
Kindergarten Readiness



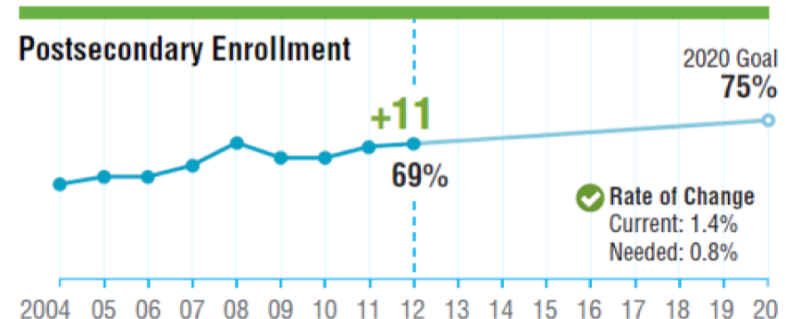
High School Graduation



4th Grade Reading



Postsecondary Enrollment



Learn4Life Organization Structure



The Work of Change Action Networks



Convene



**Understand
Local Context**



Review Data



**Analyze
Factors**



**Identify
Brightspots**



**Develop
Action Plans**

Regional Bright Spots Are Everywhere



Kindergarten
Readiness

**Lake Forest
Elementary School**
Fulton County Schools



High School
Graduation

**South Gwinnett
High School**
Gwinnett County Schools



Thank You for Your Support

- **Follow us Social Media:** @L4LMetroAtlanta and www.L4LMetroAtlanta.org
- **Be a champion of Learn4Life** by helping share our regional performance to your constituents
- **Get involved** with the 3rd Grade Literacy Change Action Networks as they identify bright spots