

2023 LCI CALL FOR IDEAS



LCI By the Numbers



131
LCI
Communities



168
Follow up
Studies



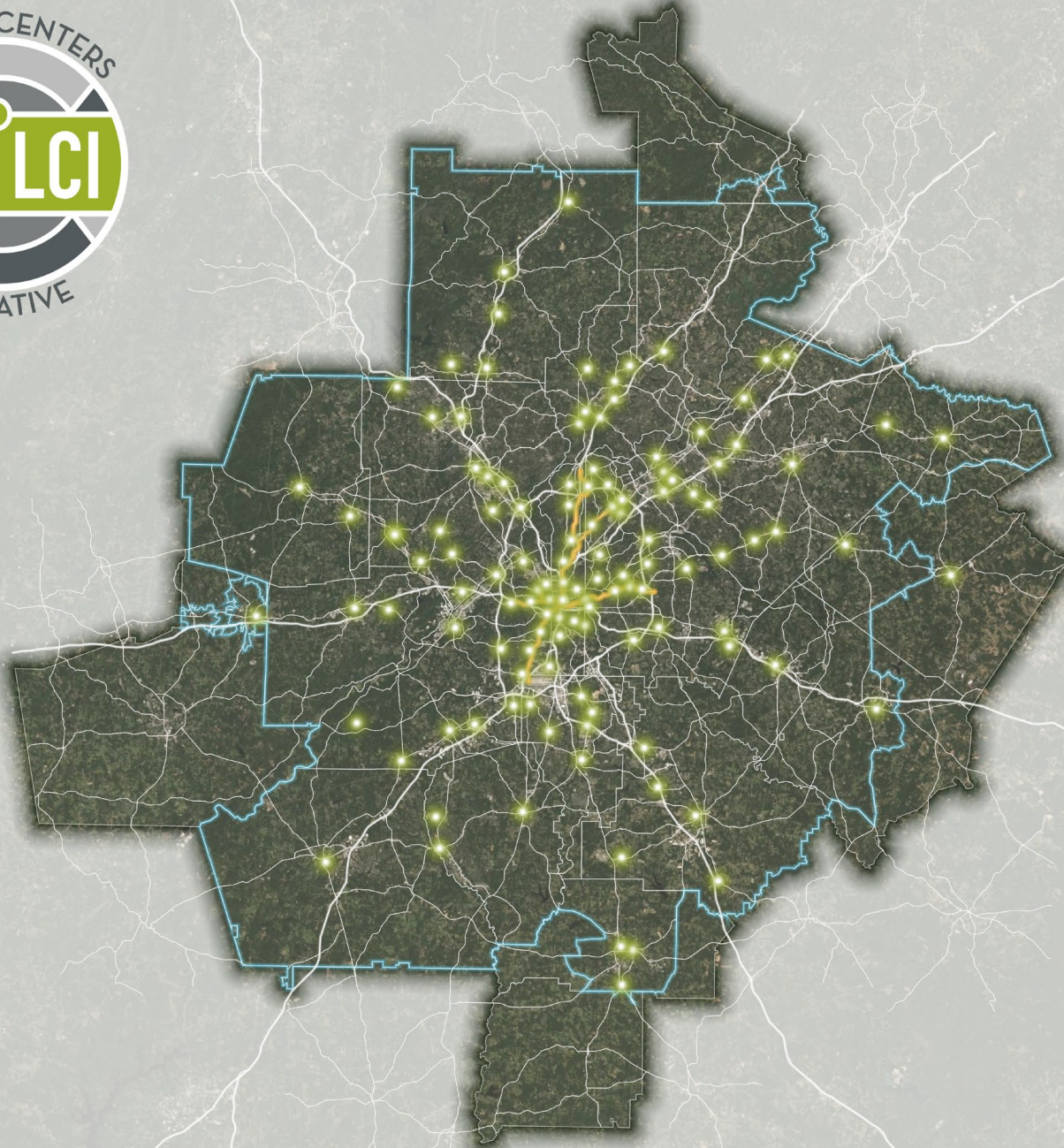
137
transportation
projects

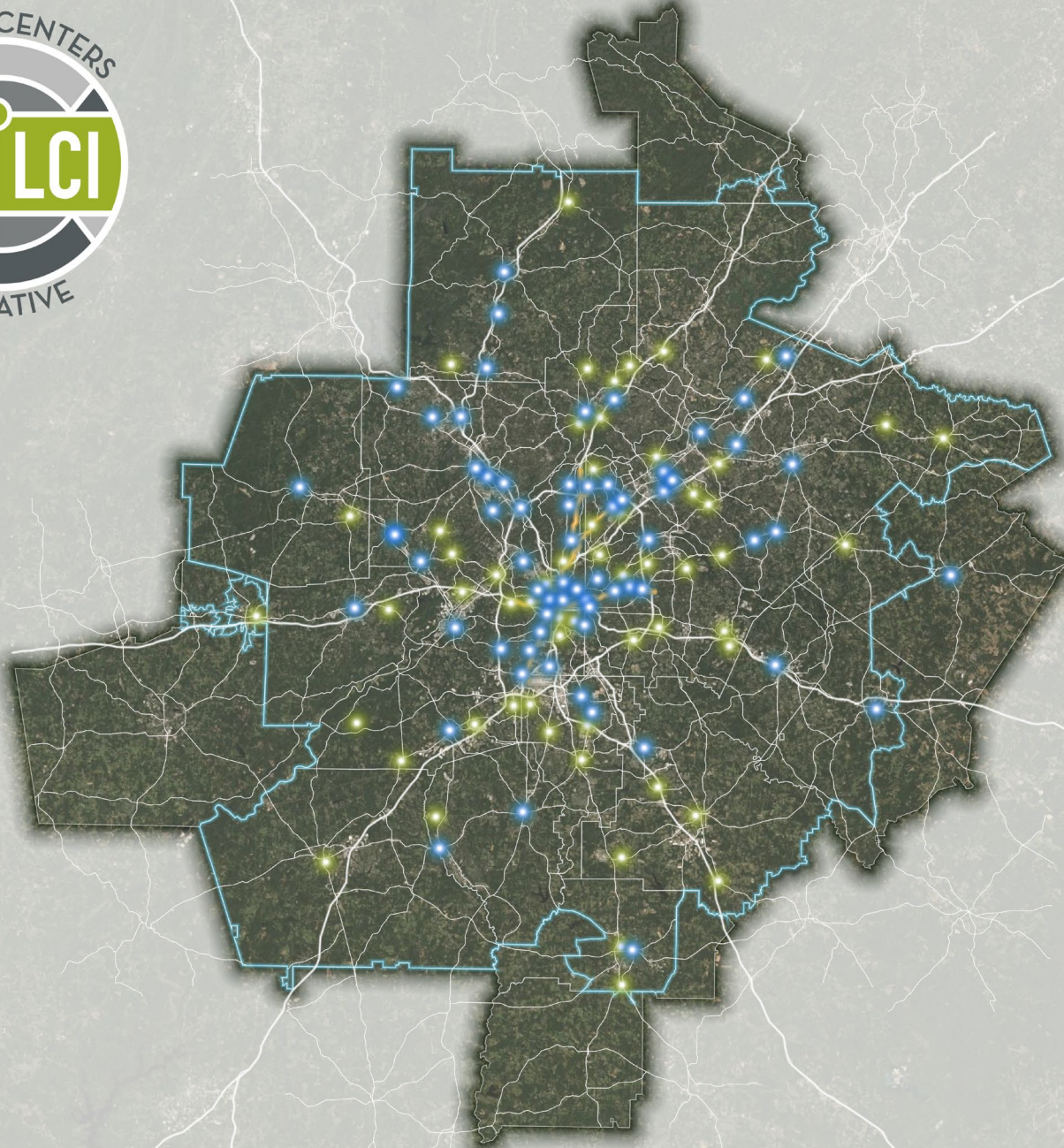
\$21.4 M

in total study
funds

\$301 M

in transportation
project funding





2021 LCI Transportation Call for Projects

- Due to sizable balance of unobligated funds in FY22 (approx. \$11M), need emerged to open applications ahead of the TIP Solicitation
- To expedite process, 2021 LCI Solicitation limited to:
 - PE phases only
 - FY22 funds only
 - 1 application per LCI Area
 - Projects exempt from air quality conformity analysis
- 21 Applications received, 20 eligible
- **17 projects, \$10.5 Million awarded**



2021 LCI Transportation Call for Projects(Programmed in TIP, May 2022):

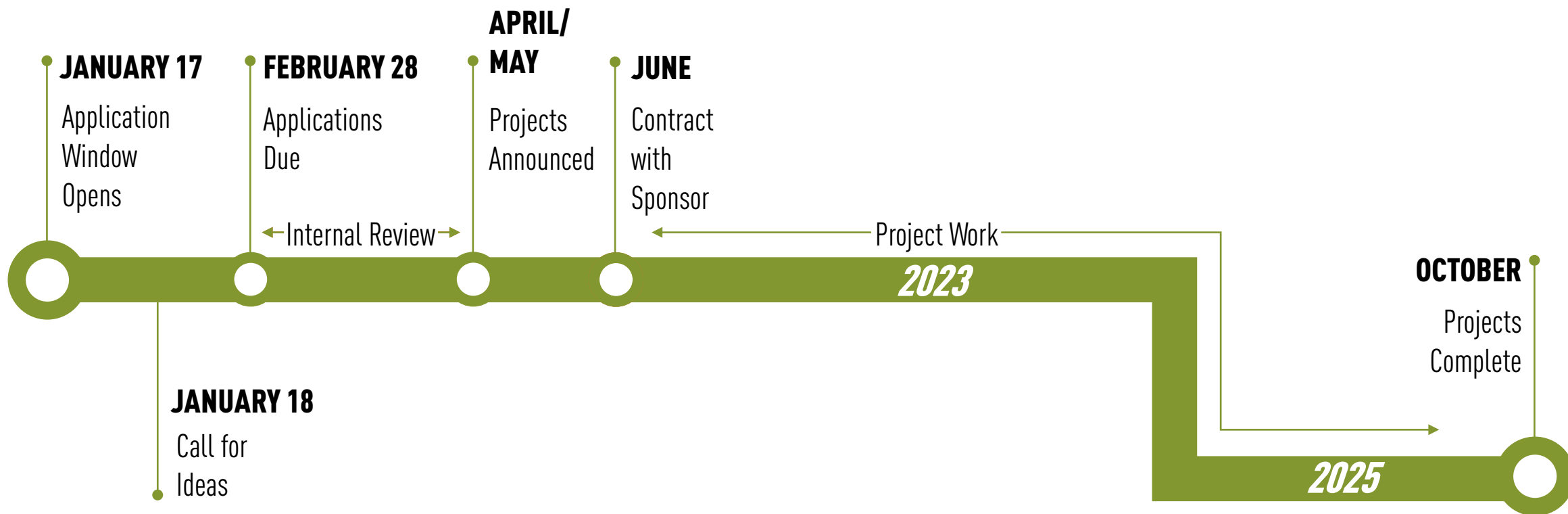
Jurisdiction	Sponsor Name	Project Name	Phase	Project Type	Fed/LCI Amount
Atlanta	Atlanta	Peachtree Shared Space	PE	Complete Street	\$1,200,000
Atlanta	Atlanta	Moreland & Dekalb Interchange	PE	Sidepath/Trail	\$240,000
Barrow	Winder	Winder Bicycle and Pedestrian Improvements	PE	Sidepath/Trail	\$280,000
Cherokee	Cherokee County	Bells Ferry Corridor LCI Multi-Use Trail	PE	Sidepath/Trail	\$308,000
Cherokee	Holly Springs	Holly Street Pedestrian Improvements	PE	Complete Street	\$545,522
Clayton	Forest Park	Main St & Forest Pkwy Pedestrian Bridge	Feasibility Study	Pedestrian Facility	\$160,000
Cobb	Powder Springs	Silver Comet Connector - Old Lost Mountain Rd.	PE	Sidepath/Trail	\$360,000
DeKalb	Doraville	New Peachtree Road Multi-use Path	PE	Sidepath/Trail	\$221,240
DeKalb	Dunwoody	North Shallowford Road Path	PE	Sidepath/Trail	\$560,000
Douglas	Douglasville	Fairburn Road Corridor Improvement Project	PE	Complete Street	\$1,040,000
Fulton	Alpharetta	North Point Alpha Link	PE	Sidepath/Trail	\$1,000,000
Gwinnett	Buford	Buford Multi-Use Trail Phase 2	PE	Sidepath/Trail	\$712,000
Gwinnett	Peachtree Corners	Innovation District Multi-use Trail (Phase 2)	PE	Sidepath/Trail	\$480,000
Gwinnett	Sugar Hill	Sugar Hill SR-20 Pedestrian Connection Greenway	PE	Sidepath/Trail	\$720,000
Gwinnett	Gwinnett County	Loop Trail Segment 3 & 4	PE	Sidepath/Trail	\$1,100,000
Gwinnett	Suwanee	Suwanee Loop Trail Network	PE	Sidepath/Trail	\$720,000
Newton	Covington	Hwy 278 Path & Safety Improvements (Ph II)	PE	Sidepath/Trail	\$1,017,280

BASIC LCI APPLICATION INFORMATION

- **Reimbursable grant program.**
 - **ARC pays up to 80% of the study amount**
- **Applicant must be a CID, local government, or transit agency**
- **Award up to \$1.8 Million**
- **Must be able to complete work by October 2025**
- **Needs to have a multi-modal transportation nexus**



2023 LCI SCHEDULE



LCI AREA FOCUS AREAS



MAIN STREETS & DOWNTOWNS



TRANSIT AREAS

LCI STUDY TYPES



TACTICAL

Focus on Implementation



CATALYTIC

Focus on Visions

What is a Tactical LCI Study



TACTICAL

- **Your LCI Plan recommended a trail or trail crossing but you need more information to determine if it is feasible**
- **A roundabout was recommended but before going forward you want to get more public feedback and better construction and right of way costs**
- **A recommendation was made to develop to update zoning and design guidelines**
- **You have a large LCI area but are looking for a detail development and transportation recommendations for a specific site or area**
- **These can be within a Catalytic LCI Study**

What is a Catalytic LCI Study



CATALYTIC

- **You are looking to develop your community's first LCI Plan or an update to your LCI Plan**
- **You must examine connections between land use and transportation**
- **Develop recommendations for economic development and housing**
- **Identify and/or write new zoning and design guidelines for implementation.**
- **Develop a 100 Day Action Plan, 5 Year Work Program and long-term work program**



Application Question-LCI Priorities and Community Impact

How does the LCI study advance the LCI Priorities?

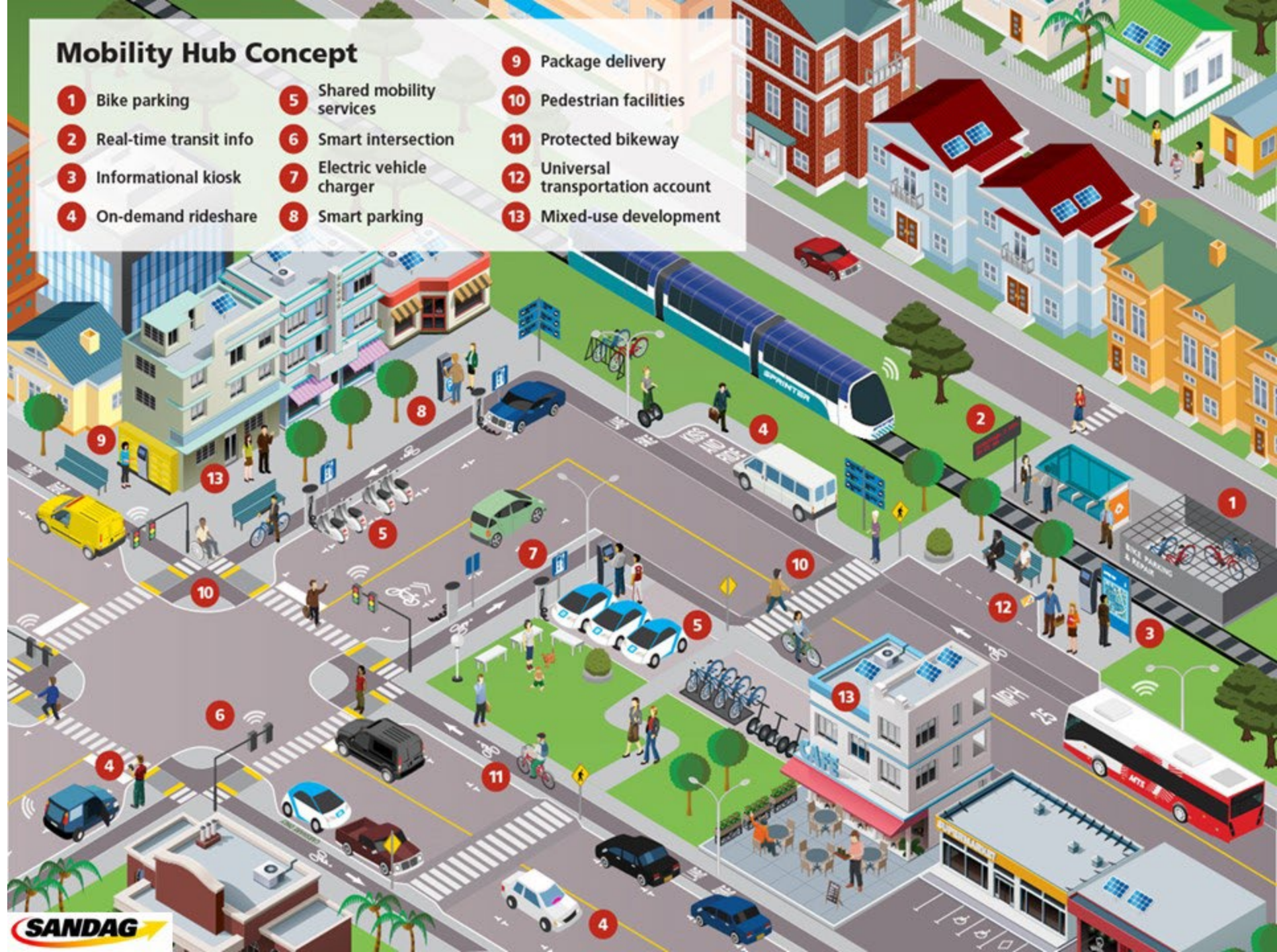
- **Creative Placemaking**
- **Affordable/Diverse Housing**
- **Climate Resiliency**
- **Smart City Technology**

How does the LCI study address a Community Need?



Mobility Hub Concept

- | | | |
|--------------------------|----------------------------|-------------------------------------|
| 1 Bike parking | 5 Shared mobility services | 9 Package delivery |
| 2 Real-time transit info | 6 Smart intersection | 10 Pedestrian facilities |
| 3 Informational kiosk | 7 Electric vehicle charger | 11 Protected bikeway |
| 4 On-demand rideshare | 8 Smart parking | 12 Universal transportation account |
| | | 13 Mixed-use development |

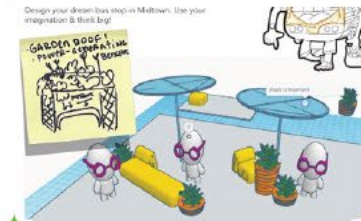




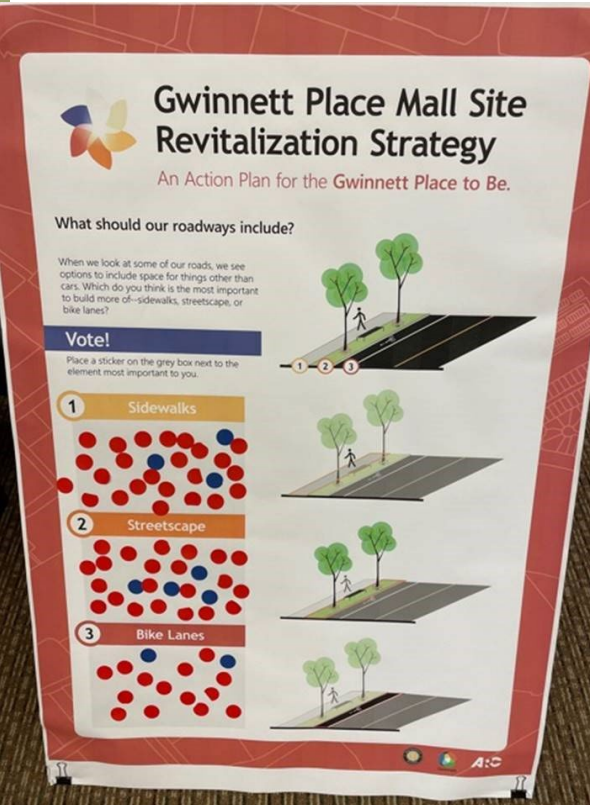
2023 LCI Program Changes

- **Emphasis on *creative* community engagement efforts**
- **Work with community-based organizations (CBOs)/community leaders EARLY to co-design engagement**
- **Incorporate local artists into your process**





Public Engagement – Gwinnett Place Mall LCI



Photos Courtesy of VHB & Gwinnett County

2022 LCI PILOT STUDIES

ARC

TRANSIT CREATIVE PLACEMAKING



We incorporated Transit Creative Placemaking into 2022 Studies and will continue it into 2023. Applicants will need a letter of support from the transit agency.

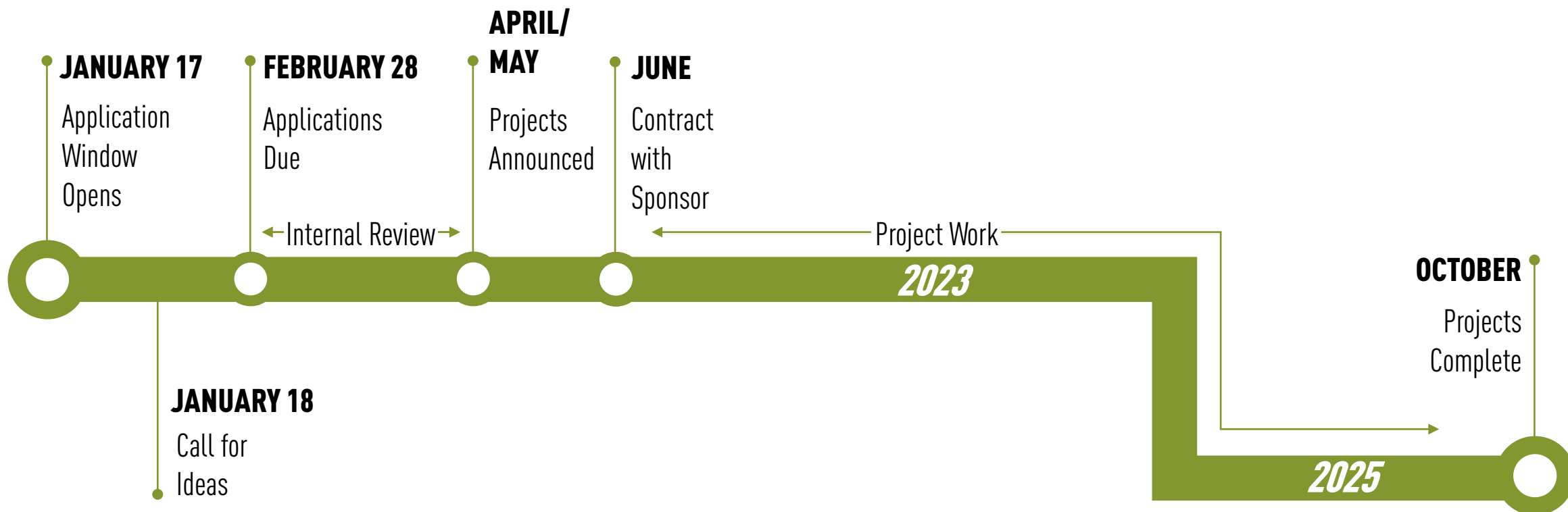
PILOT LCI COMMUNITY VEHICLE CHARGING



In 2022, we awarded Town Center CID a pilot grant to study how to prepare LCI areas for community vehicle charging.

2023 LCI Studies are expected to illustrate how Electric Vehicle Charging can be incorporated throughout the study area.

2023 LCI SCHEDULE



CONTACT INFO.

Lauren Blaszyk, AICP
Planning Administrator

LBlaszyk@atlantaregional.org

470.387.1589

