

# LCI Ideas Exchange

September 6, 2019



Virginia Avenue

SMART CORRIDOR

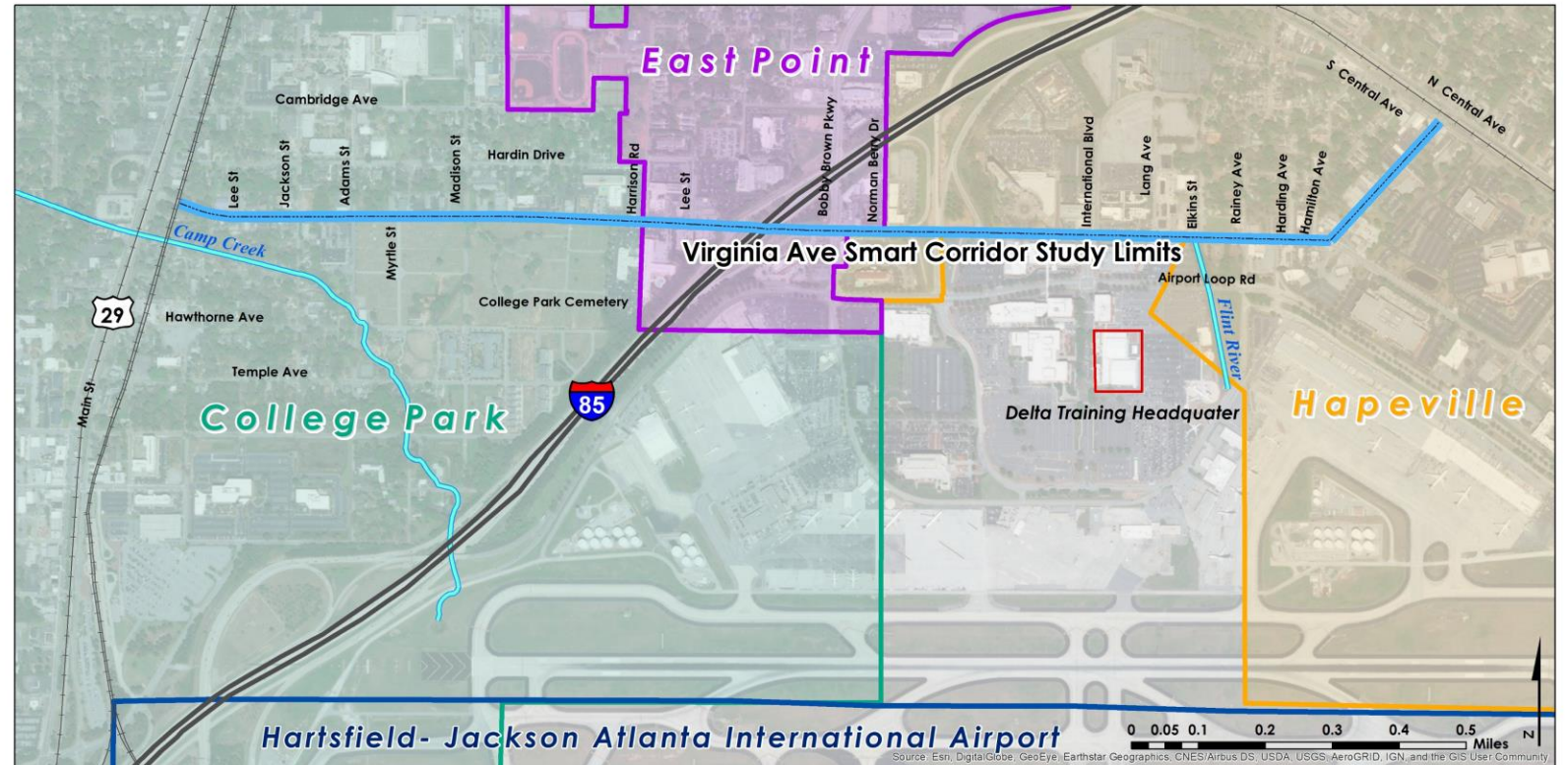


# WHAT IS THE STUDY?

Virginia Ave. from Main St./US 29 to South Central Ave.



## Virginia Ave Smart Corridor Study Limits



### Legend

- Virginia Ave Smart Corridor Study Limits
- Railroads
- Water Body
- East Point
- Hapeville
- College Park
- Airport



# WHAT TYPES OF SOLUTIONS DID WE REVIEW?



Signals



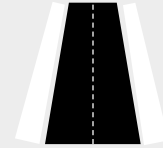
Bikes/  
Pedestrians



Transit



Street  
Lights



Pavement/  
Sidewalks



Wayfinding



Parking



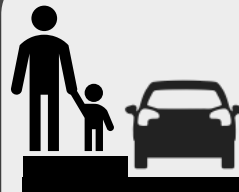
EV Charging



Video  
Surveillance



Wi-Fi



Curbside



Apps



Data  
Exchange



# PRELIMINARY RECOMMENDATIONS

## Recommended Project Prioritization

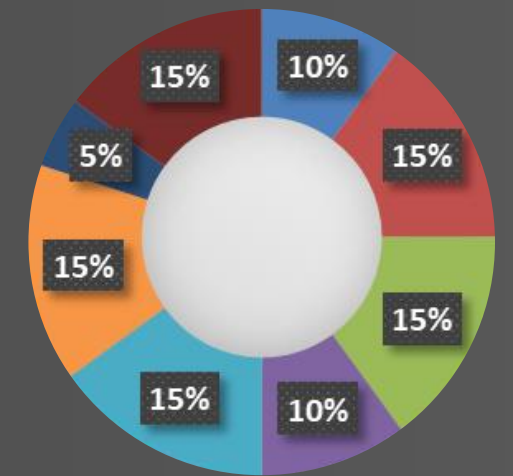


Select Scenario		User Defined
User Defined		
Rank	Project	ID
1	Transit Signal Priority	1
2	Emergency Vehicle Signal Pre-emption	2
3	Bike Signal Detection	5
4	CV-based Adaptive Signal Control Technologies	3
5	In-Pavement Illuminated Crosswalks	21
6	Solar Bus Shelters	11
7	RRFB and/or PHB with Automated Options for Activation	6
8	Transit-pedestrian Warning System	4
8	Smart Streetlighting	7
8	Digital Wayfinding Kiosks	12
11	Public WiFi	20
12	Cameras/License Plate Readers	18
13	Autonomous Shuttle	10
14	Automated Traffic Monitoring/Object Detection	19
15	Solar USB charging bench	13
16	Parking Availability App	16
17	Smart Parking Meters	17
18	EV Charging Stations	8
19	Automated Parking System	14
20	Curbside Occupancy Sensors	15
21	Smart Dots in Street Centerlines	9

Tier 1

Tier 2

Tier 3/  
Revisit  
Later

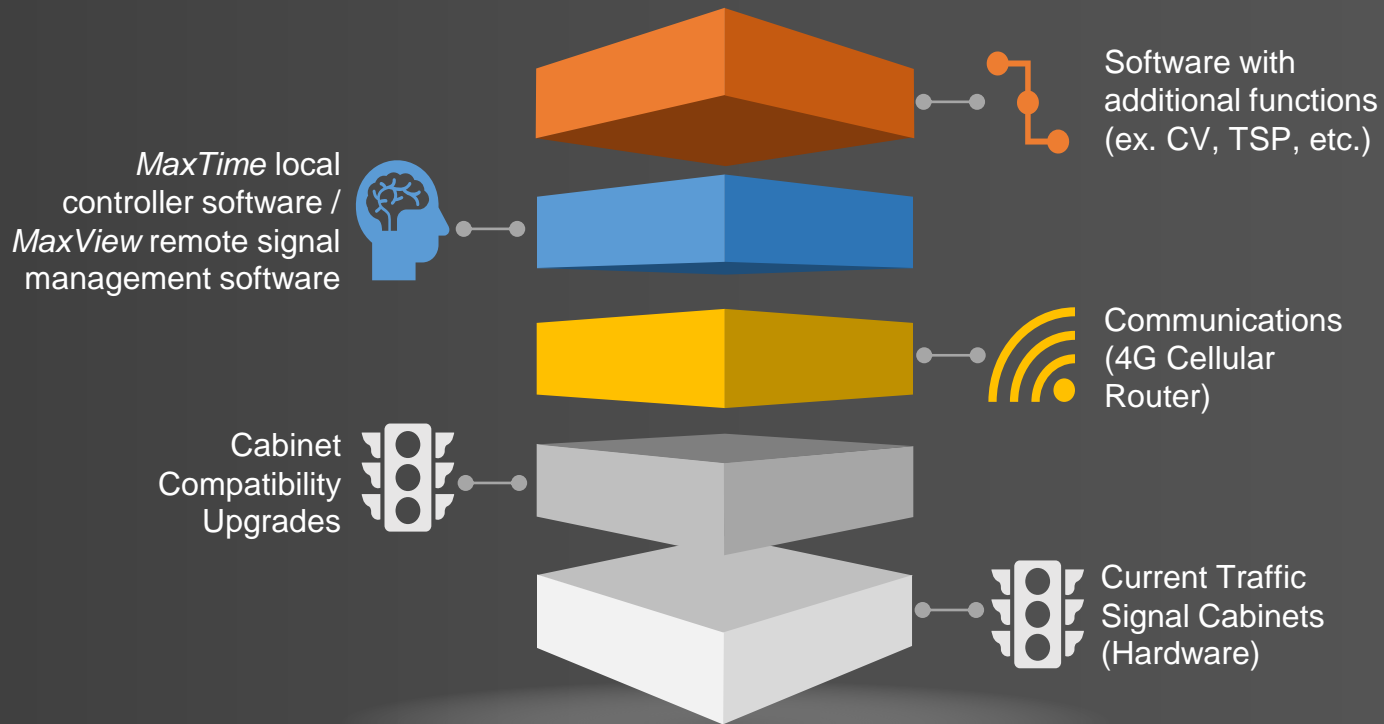


- Stakeholder Input
- ROI and Economic Benefits
- Safety
- Cost
- Project Readiness
- Mobility Options
- Environment & Public Health
- Sustainable Technology

# EARLY WINS!

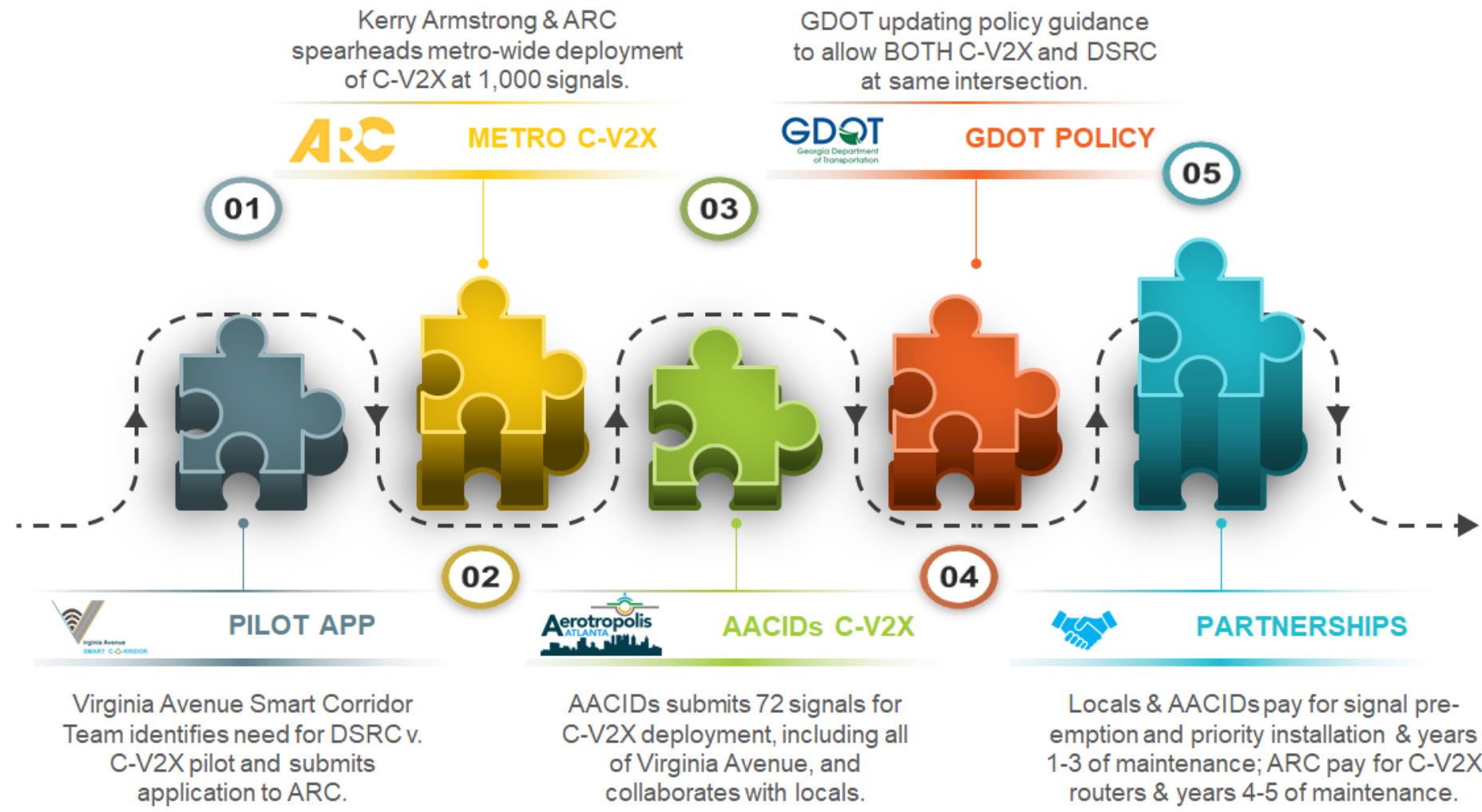
## GDOT Upgrade of Signals to MaxTime & Installation of 4G LTE Routers - COMPLETE!

### Building the Foundation for Future Signal Enhancements



# EARLY WINS!

## C-V2X Router Installations



# EARLY WINS!

## DSRC Router Installations

- GDOT willing to consider donating and installing DSRC routers at 2-3 intersections along the corridor
  - I-85 ramp intersection
  - Other potential locations TBD



# EARLY WINS!

## MARTA Transit Vehicle Testing

- If we provide the technology, MARTA willing to provide:
  - Non-revenue service test vehicle (MARTA Mobility van) along Virginia Avenue
  - Revenue-service 3+ month pilot (Bus 172 is 1 of 140 buses serving 37 routes out of Hamilton Garage)





# PILOT PROJECT OPPORTUNITY

## USDOT ADS Grant Application



\*Redevelopment Zones identified in Aerotropolis Atlanta CIDs Master Plan (indicated in blue)