

# 2019 Call for Projects

Community Development Assistance Program (CDAP) and Livable Centers Initiative (LCI)



# A NEW FRAMEWORK

for the Atlanta Regional Commission's Community Development Group





AEROTROPOLIS  
COMMUNITY PLANNING  
ACADEMY (CPA)  
REGIONAL HOUSING  
TASK FORCE (RHTF)  
FACILITATION  
TECHNICAL  
ASSISTANCE  
RESOURCE PLANNING  
MULTI-  
JURISDICTIONAL  
PARKING  
INVENTORIES  
REGIONAL HOUSING  
FORUM  
ZONING CODE  
AUDITS  
STAKEHOLDER  
CONVENING  
COMMUNITY FORUMS  
LOCAL  
COMPREHENSIVE  
PLANS  
LAND USE POLICY  
REVIEWS  
EDUCATION  
COORDINATION  
LIVABLE CENTERS  
INITIATIVE (LCI)  
COMMUNITY CHOICES  
DEVELOPMENTS OF  
REGIONAL IMPACT (DRI)  
HOUSING ASSESSMENTS  
PLANNING ASSISTANCE TEAMS  
CAPITAL IMPROVEMENT  
ELEMENT (CIE) REVIEWS  
TRANSIT  
ORIENTED  
DEVELOPMENT  
(TOD)  
COMP PLAN  
REVIEWS  
FOOD SYSTEMS PLANNING  
VISIONING WORKSHOPS  
DEVELOPMENTS OF EXCELLENCE (DOE)  
AWARDS  
STRATEGIC  
PLANNING  
HISTORIC PRESERVATION  
PLANNING

# COMMUNITY PLANNING ACADEMY (CPA)

FACILITATION

TECHNICAL  
ASSISTANCE

STAKEHOLDER  
CONVENING

PARKING  
INVENTORIES

ZONING CODE  
AUDITS

## LIVABLE CENTERS INITIATIVE (LCI)

EDUCATION

### COMMUNITY CHOICES

HOUSING ASSESSMENTS

PLANNING ASSISTANCE TEAMS

FOOD SYSTEMS PLANNING

VISIONING WORKSHOPS

TRANSIT  
ORIENTED  
DEVELOPMENT  
(TOD)

### STRATEGIC PLANNING

HISTORIC PRESERVATION  
PLANNING

## FACILITATION

VISIONING WORKSHOPS

STAKEHOLDER  
CONVENING

ZONING CODE AUDITS

TECHNICAL  
ASSISTANCE

PARKING  
INVENTORIES

EDUCATION

FOOD SYSTEMS PLANNING

## COMMUNITY CHOICES

PLANNING ASSISTANCE TEAMS

HISTORIC PRESERVATION  
PLANNING

STRATEGIC  
PLANNING

HOUSING ASSESSMENTS

# LIVABLE CENTERS INITIATIVE (LCI)

ARC

# Equity

- Access to Healthy Food
- Affordable Housing
- Lifelong Communities
- Green Infrastructure



# Resiliency

- Historic Preservation
- Smart Communities
- Workforce Development
- Creative Placemaking



A photograph of two hikers, a man and a woman, walking along a wooden boardwalk. The man is in the foreground, wearing a white t-shirt and camouflage pants, looking down. The woman is behind him, wearing a white tank top, a baseball cap, and carrying a large backpack, looking forward with a smile. They are walking on a wooden boardwalk that runs alongside a body of water. The background is filled with tall reeds and trees, suggesting a wetland or marsh environment. The entire image has a green tint.

# COMMUNITY DEVELOPMENT ASSISTANCE PROGRAM

Photo Credit: Rockdale County

## Purpose

- Combine multiple local technical assistance tools (PAT, Community Choices, ad-hoc projects)
- Improve communication about offerings and priorities
- Allow proactive internal coordination
- Create new opportunities for external collaboration

## Program Details

- Offers long-range planning, implementation, education, and facilitation assistance.
- 43 applications submitted in 2018 and 26 in 2019.
- Partnership has grown from 4 to 6 organizations.





# LIVABLE CENTERS INITIATIVE 2.0



Photo Credit: City of Conyers

# Partners



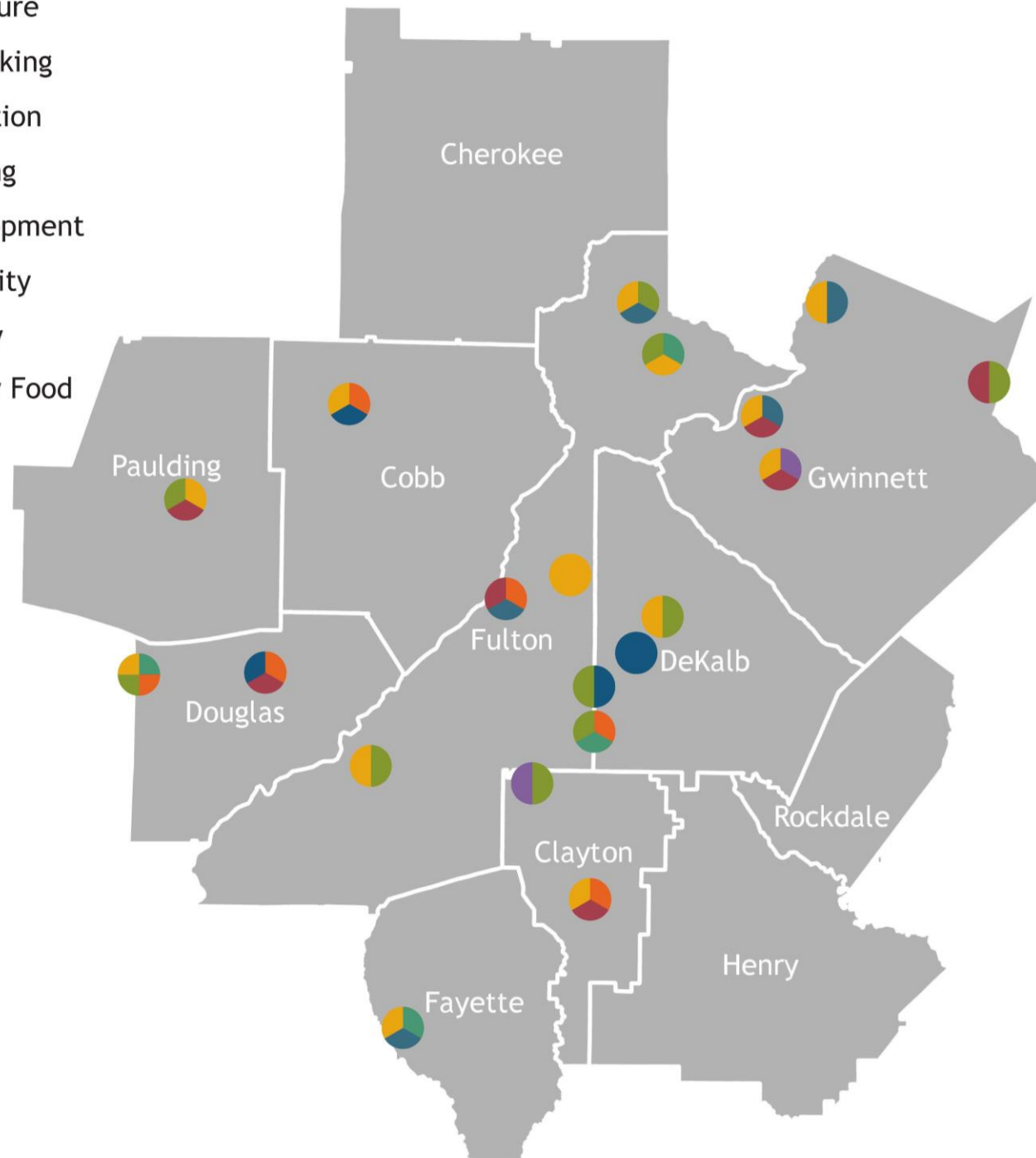


# LCI re-envisioning completed in late 2018

- Key takeaways from re-envisioning process
  - Need to think what makes a Center truly 'Livable'
  - Program has become too broad
  - Funding amounts limit program impact
  - Need to better understand community needs upfront
- LCI 2.0
  - Focus on transit and town centers
  - Overlay of priority issues areas
  - Increase from \$1.25 million to \$2.25 million
  - Increased scoping assistance



- Green Infrastructure
- Creative Placemaking
- Historic Preservation
- Affordable Housing
- Workforce Development
- Lifelong Community
- Smart Community
- Access to Healthy Food





An aerial photograph of Atlanta, Georgia, showing a dense green forest in the foreground and the city skyline in the background under a cloudy sky. A solid orange horizontal band is positioned across the upper middle of the image.

# Thank you!

Samyukth Shenbaga,  
Manager, Community Development Group  
ARC

# Project Applications

## Corridor Studies

- Canton: Marietta Road Community Initiative
- Rockdale: Sigman Road Study
- Paulding: SR 92 Corridor Study

## Historic Preservation Studies

- Lithonia: Live and Love Lithonia
- Arabia Mountain: Historic Resource and Community Strategy
- Rockdale: Milstead Village
- Central Atlanta Progress: Local Stories

## Food System Plans

- Buford Highway: Food Security
- South Fulton: District 4 Resiliency Program

## Audits

- Old Fourth Ward: SWOT Study
- Tucker: LCI Update (Land Use Audit)
- South Fulton: Washington Road Walkability and Pedestrian Safety Study

## Housing Studies

- Atlanta Land Trust: Investment Prioritization Tool
- Forest Park: Housing and Neighborhood Stabilization Strategy
- Cherokee County Housing Study
- Sugar Hill: Visioning and Housing Assessment

## Trainings/Facilitations

- Norcross: Boards, Authorities, and Commissions Training
- Rockdale-Conyers: Zoning Training
- DeKalb County: Glenwood Road-Columbia Drive Commercial Development Corridor

## Land Use/Master Plans

- South Fulton: Lighting Study
- Tucker: Grid Restoration Feasibility Study and Implementation Plan
- Sugar Hill: Highway 20 Pedestrian & Bicycle Safety Improvements
- Douglas: UDC Update
- Atlanta University Center: Master Plan
- Aerotropolis: Land Use and Zoning Study
- Chattahoochee Hills: Campbellton Crossroads Village Study





# 2019 LCI Awards

## Catalytic Studies

- City of Dallas
- City of Peachtree City
- Airport Area LCIs Trail Plan
- Jimmy Carter to Sugarloaf BRT
- City of Auburn

## Tactical Studies

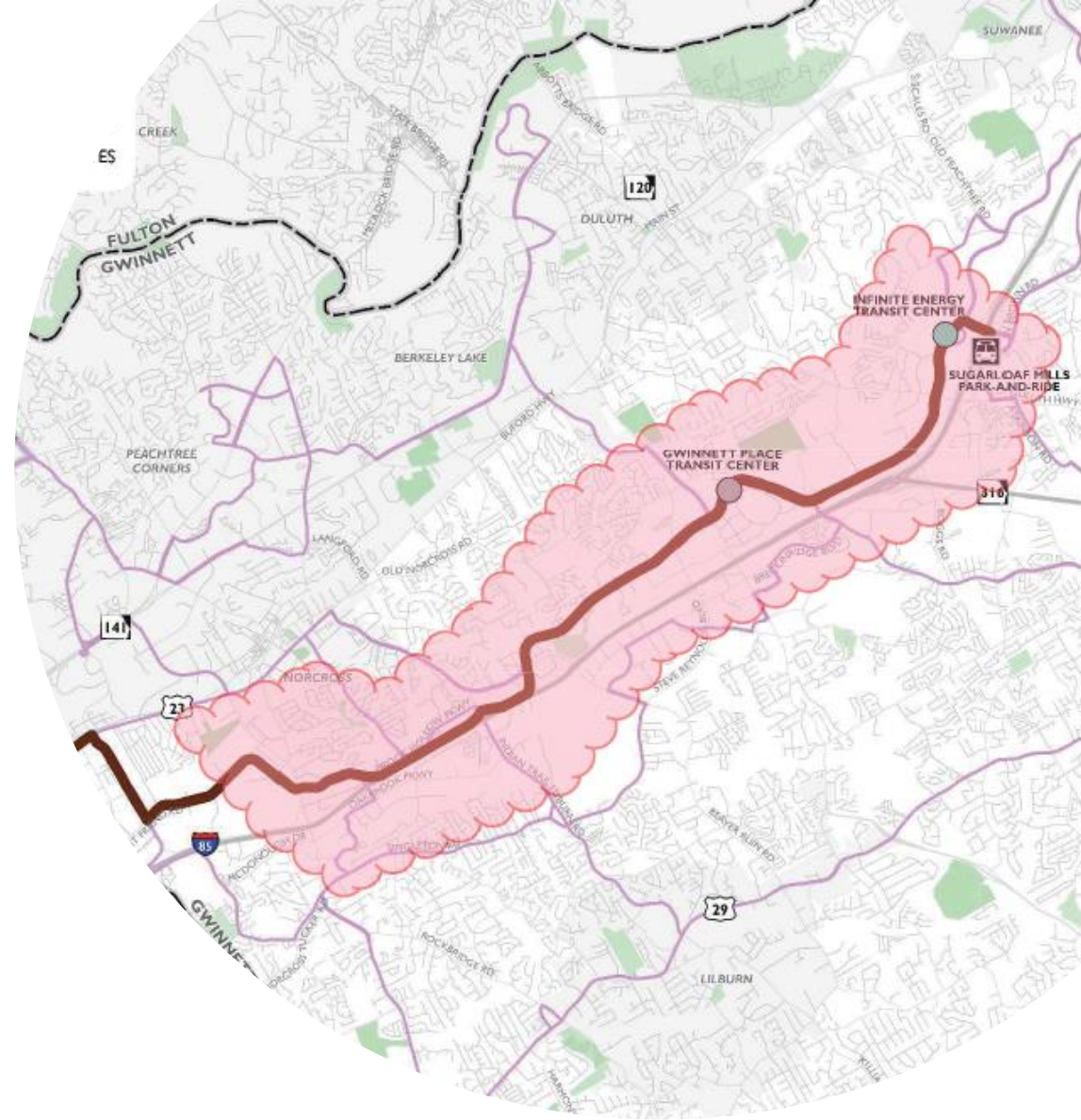
- Alphaloop Trail
- Euclid Avenue Smart Corridor
- Sugar Hill Greenway
- Chastain Road
- Tucker Alleyway

# Jimmy Carter to Sugarloaf BRT

- Connects 5 LCI Study Areas
- Partnership between County and 3 CIDs
- The study will develop land use and design recommendations to support and enhance the proposed BRT Line.

## Project Priorities:

- Creative placemaking
- Lifelong community
- Affordable housing







# Peachtree City

- Update of the 2000 LCI Plan
- Develop a Town Center for the City

## Project Priorities:

- Creative placemaking
- Access to healthy food
- Green infrastructure
  - Affordable housing
- Lifelong community
- Workforce development



# City of Sugar Hill

## Hwy 20

## Greenway

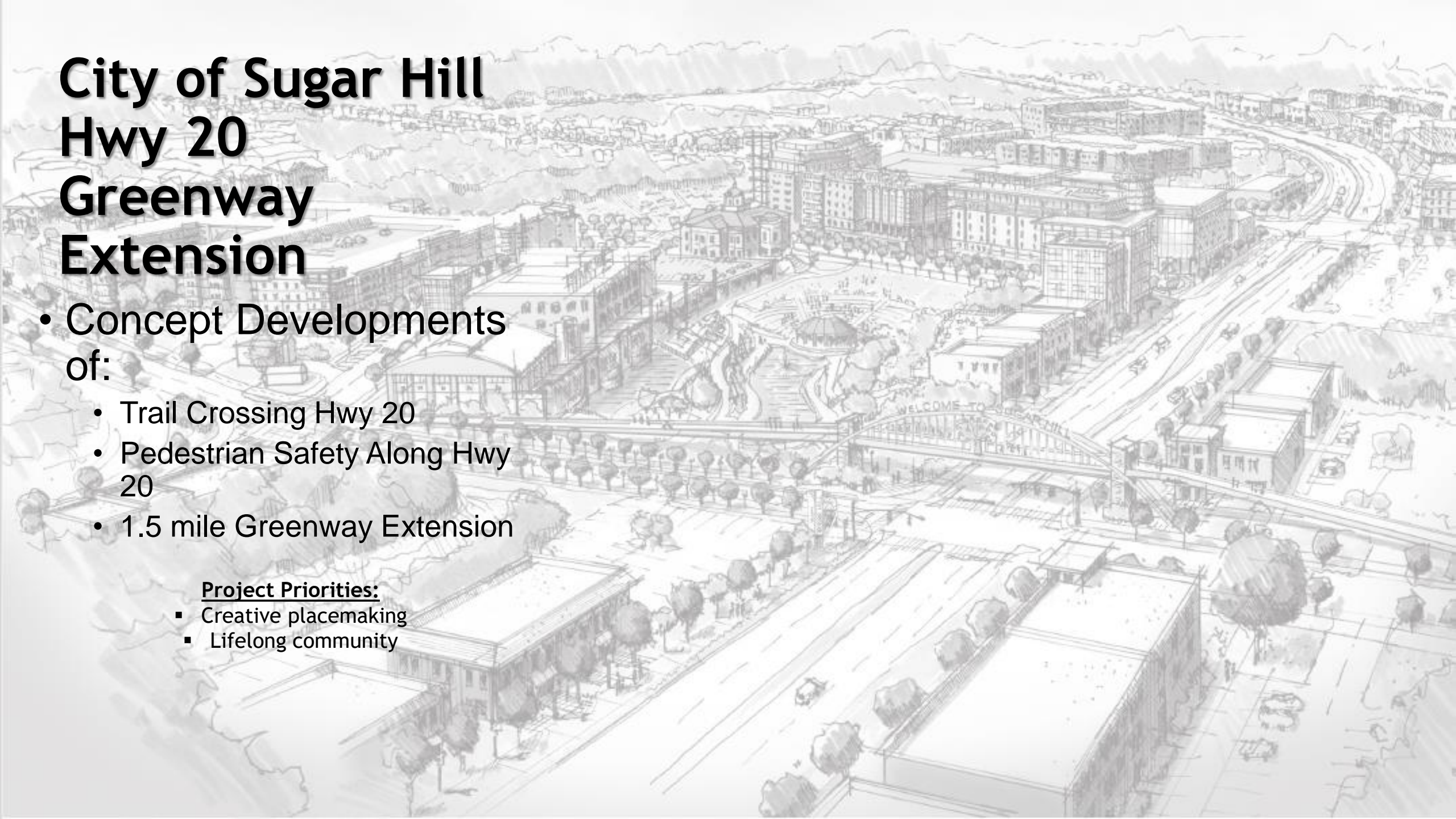
## Extension

- Concept Developments of:

- Trail Crossing Hwy 20
- Pedestrian Safety Along Hwy 20
- 1.5 mile Greenway Extension

**Project Priorities:**

- Creative placemaking
- Lifelong community







# AeroATL Greenway Development

- Concept Development of 7 Trail Segments in 7 Jurisdictions

## Project Priorities:

- Green infrastructure
- Workforce development
- Creative placemaking
- Lifelong community
- Access to healthy food
- Historic preservation
- Affordable housing