

# Walk. Bike. *Thrive!*

A regional vision for a more walkable, bikeable, and livable metropolitan Atlanta



Recommendations



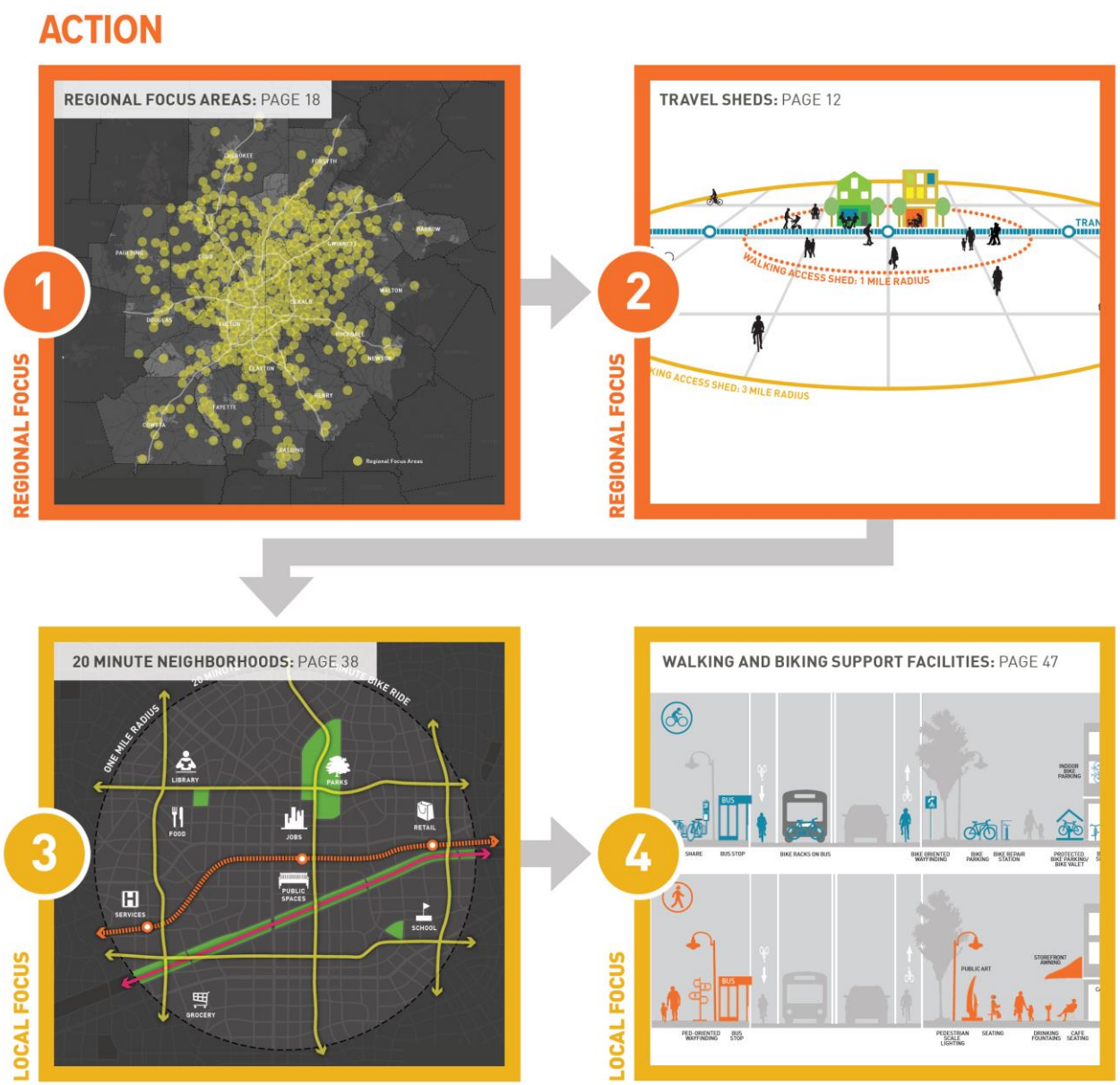
Assessment and  
Existing Conditions



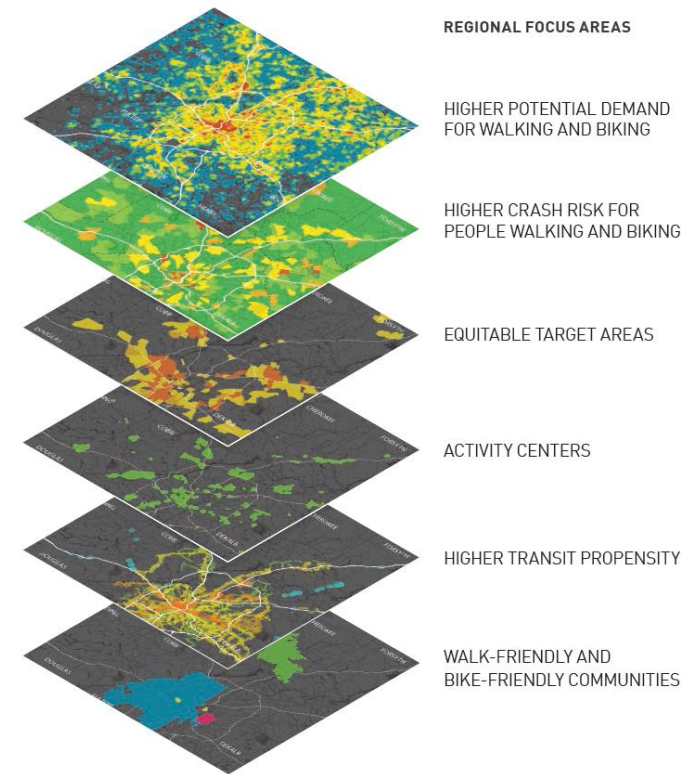
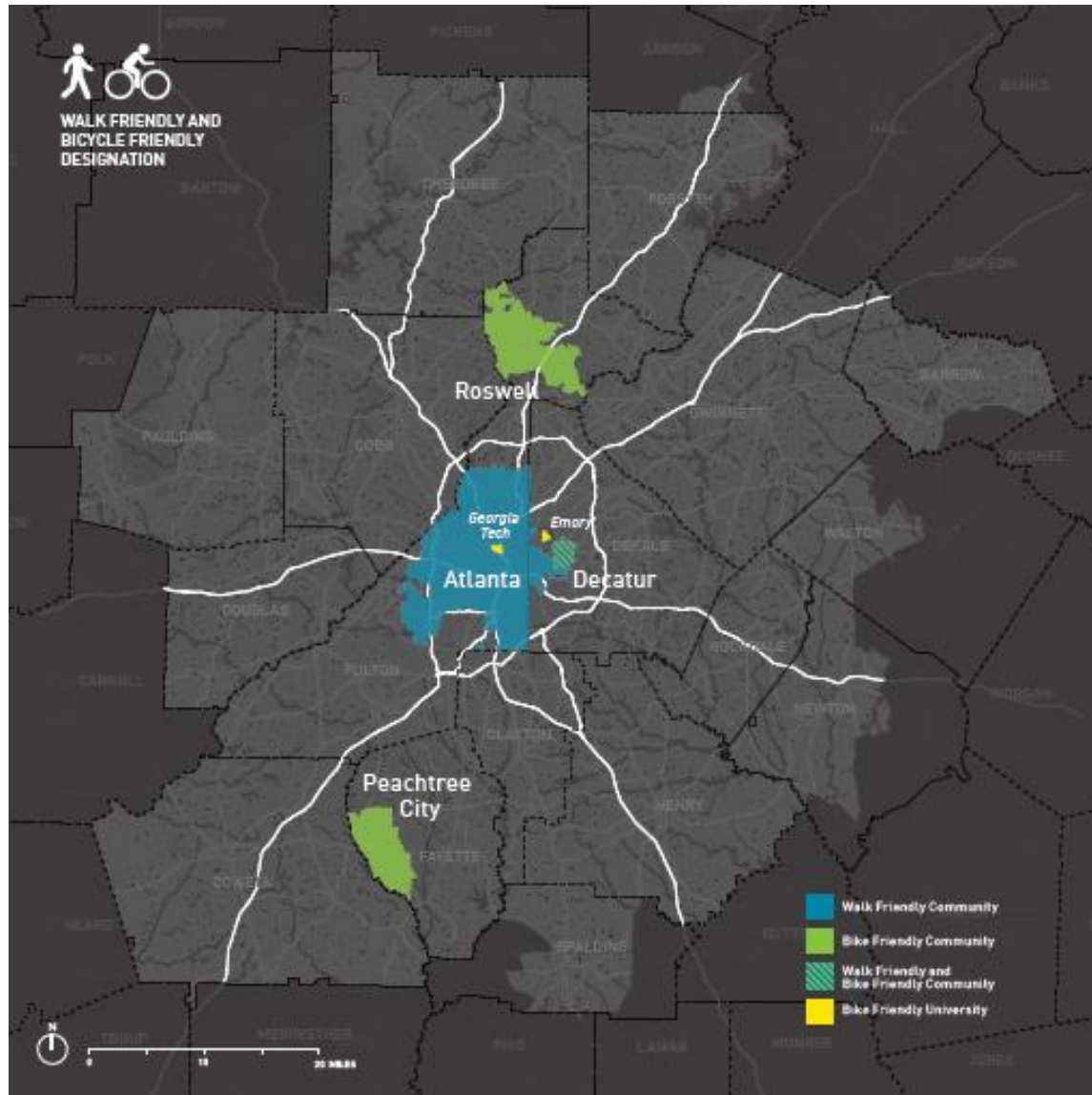
Public Participation and  
Priority Topics

[www.atlantaregional.com/bikeped](http://www.atlantaregional.com/bikeped)

# Plan Structure: Regional Vision & Local Action



# Regional Framework: Supporting Walk-Friendly & Bike-Friendly Communities





# Regional Framework:

## Regional Trail Network Strategy

### Primary Objectives:

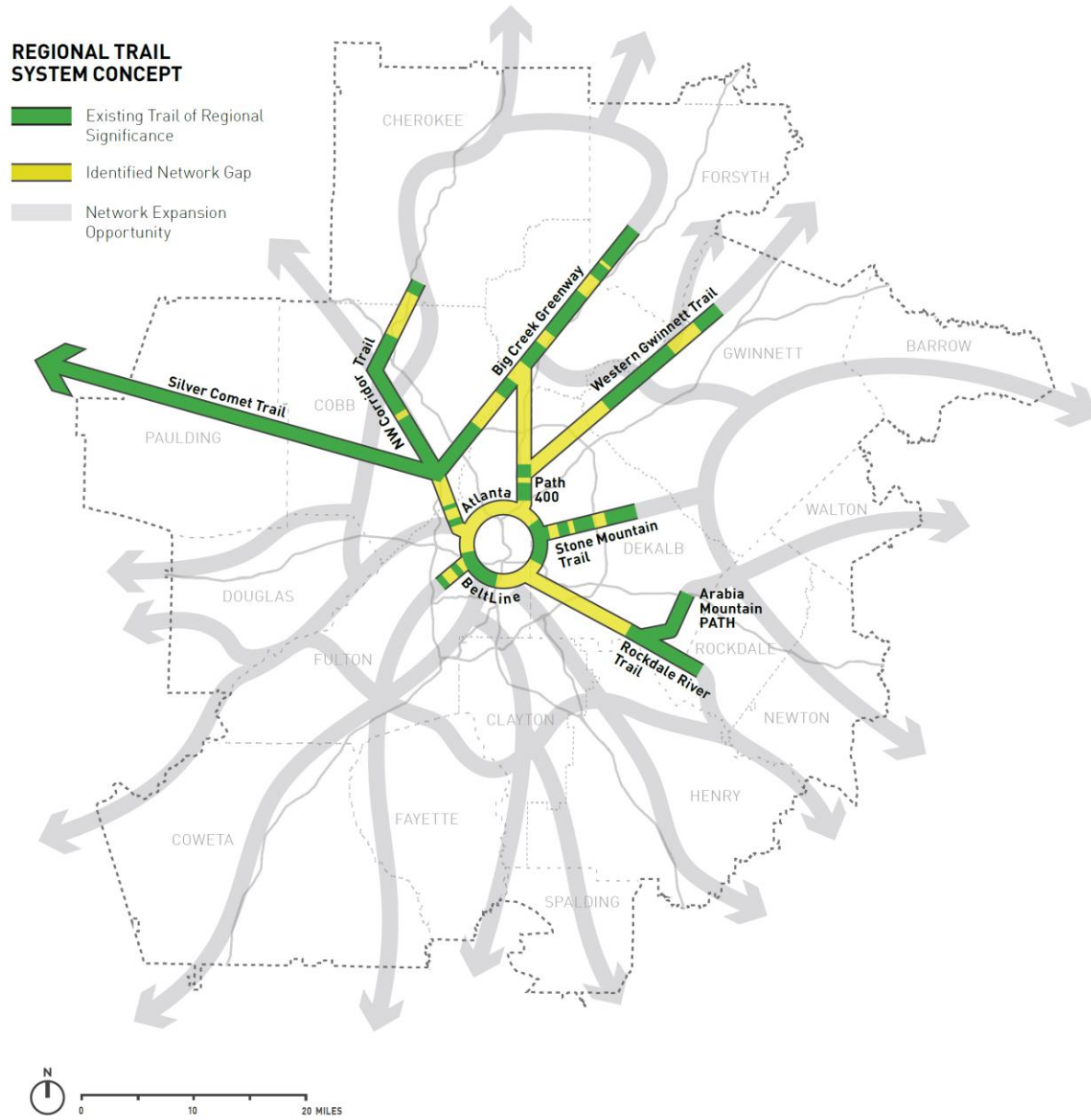
- Close identified network gaps
- Expand the network

### Trails of Regional Significance:

- ✓ One Trail of Regional Significance in every county in the region
- ✓ Improve trail access to or within Equitable Target Areas
- ✓ Connect to an existing Trails of Regional Significance
- ✓ Connect to Activity Centers or High Demand Areas
- ✓ Connect to a federal, state, or local parks

### Network Implementation Steps:

- Regional coordination
- Funding & segments costs
- Regional network impacts
- Segment scoping
- 5- and 10-year visions



# Regional Framework:

## Refining Project Prioritization

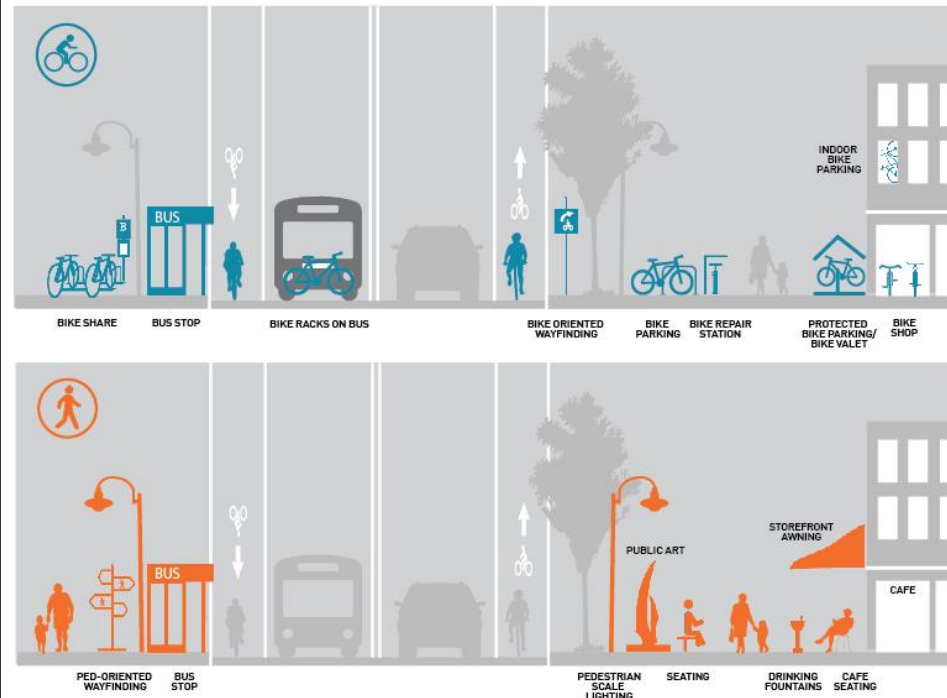
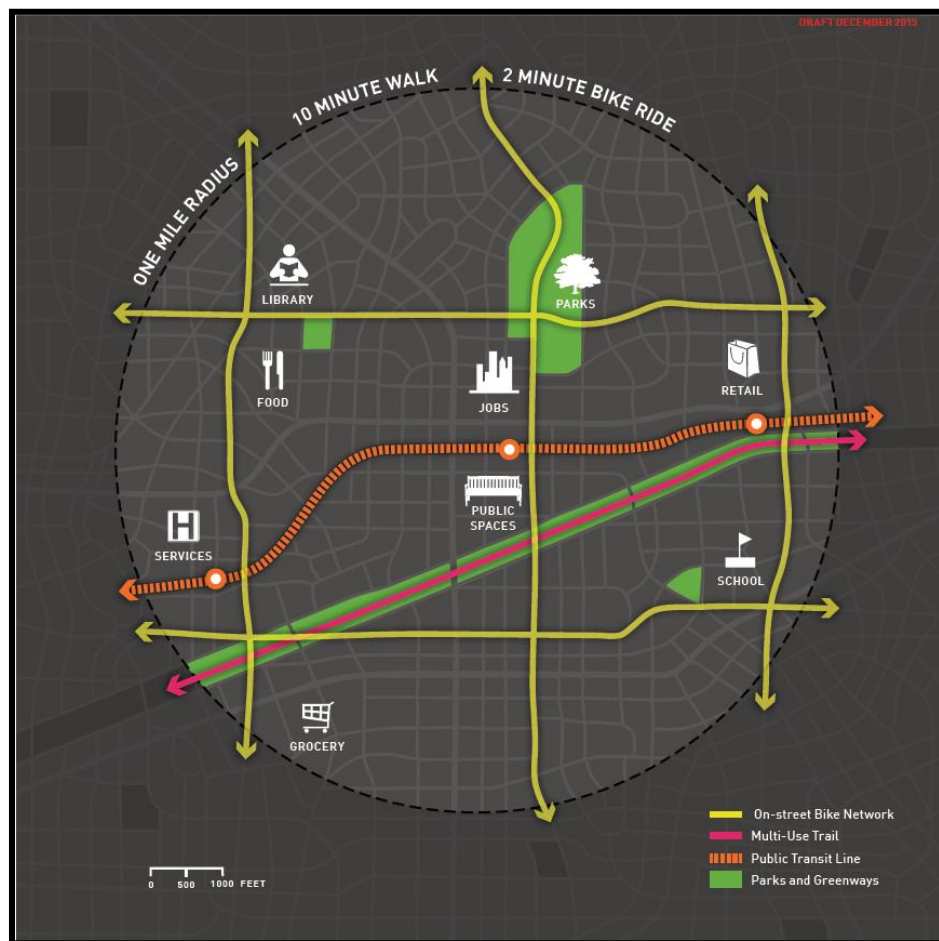
### **Project scoring for active transportation projects:**

- ☐ Is the project located in an area where there is high demand and propensity for walking and bicycling?
- ☐ Is the project located in an area with historically high crash rates for people walking and biking? If so, does the project address an identified safety issue? Is the project located in a designated Activity Center or ETA area?
- ☐ Is the project located in an area with high propensity for transit use?
- ☐ Is the proposed project located in an established Walk Friendly Community or Bike Friendly Community with adopted local strategies for successful implementation?

### **Project scoring for trail projects:**

- ☐ Does the project assist with meeting the goal of having at least one regionally significant trail in every county in the region?
- ☐ Does the project improve trail access to or within an Equitable Target Area?
- ☐ Does the project connect to an existing Trail of Regional Significance?
- ☐ Does the project connect to an Activity Center or High Demand Area?
- ☐ Does the project connect to a federal, state, or local park?

# Local Toolkit: Strategies for Walk-Friendly & Bike-Friendly Communities



# Path Forward: ARC Action Steps



**Establish a Walk Friendly and Bike Friendly Communities Resource Center**



**Develop a Walk Friendly and Bike Friendly Technical Assistance Program for ARC Region**



**Convene an Annual Walk and Bike Friendly Forum**



**Provide Evaluation and Measuring Assistance**



**Create Leadership Training for Board Members and Member Jurisdiction Leadership**



**Offer Regional Trail Coordination Assistance**



**Create a High Crash Corridor Safety Program**



**Develop a Strategy to Maximize the Use of Federal Transportation Funds for Walking and Bicycling**



**Produce a Regional Walking and Biking Safety Action Plan**

Project Webpage:  
[www.atlantaregional.com/bikeped](http://www.atlantaregional.com/bikeped)

Byron Rushing  
Bicycle & Pedestrian Planner  
Atlanta Regional Commission  
[brushing@atlantaregional.com](mailto:brushing@atlantaregional.com)