



GIO

GEORGIA GEOSPATIAL INFORMATION OFFICE

Updates from *Your* Geospatial Information Office



Megan Haley
Imagery Program
Director

What does the State's Program Include?

INCLUDED

- **6-inch COTS Orthoimagery**
 - color and color infrared
 - + 1-mile buffer into surrounding states
- **Gray Sky Program** access to rapid Post-Disaster Imagery
- **Leaf-off refresh of the entire State** over the next two winters
- **Custom admin tool** to ensure compliance with EULA, help with ROI, and provide a more comprehensive end-user experience
- **Technical, educational, and marketing support** from Vexcel & Sanborn to ensure the Programs success

NOT included but available for BUYUP at a fixed cost

- **Imagery Upgrades** (in urban areas only – population 15k +)
 - 3-inch &/or Obliques
- **Additional Data**
 - Planimetrics
 - AI-ONLY derived
 - AI & Human derived
 - Digital Terrain & Surface Models (various scales)
- **Additional Services**
 - Custom Flights (Imagery & LiDAR)
 - Analytics (e.g change detection)
 - Hosting, support, consulting

Who gets Access?

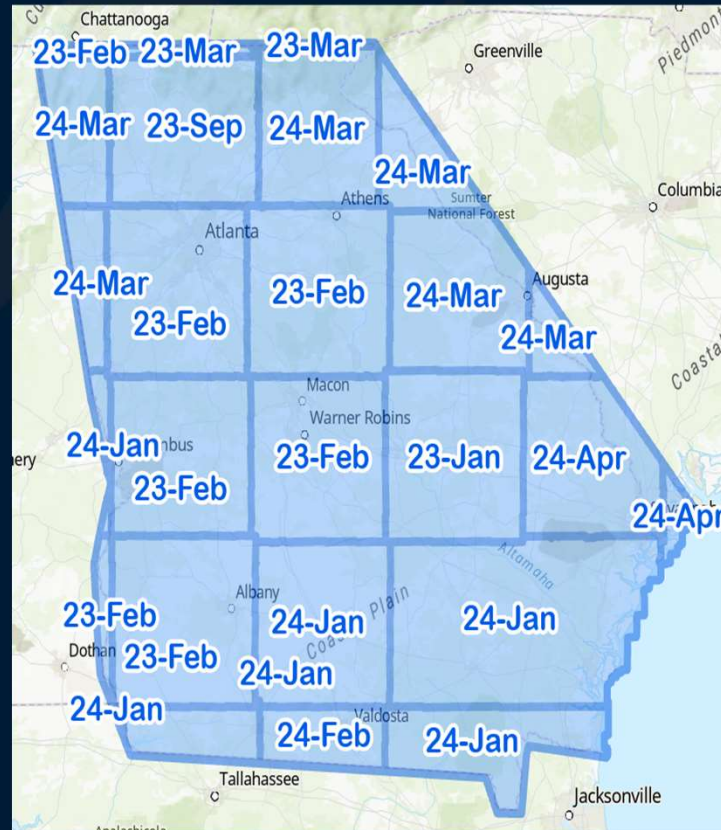
- All governmental entities in Georgia (i.e. all city, county, regional, state entities)
- As well as...
 - All **Partners** working on a project for/with a governmental entity (Federal, Consultants, Contractors, Non-profits)

Vintage & Refresh

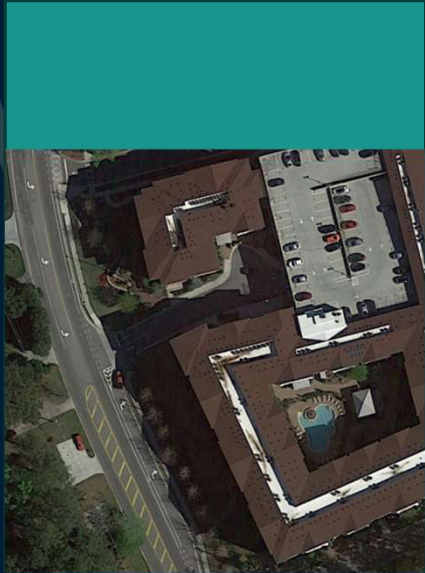
The imagery we have purchased is a mix of 2023/2024

The first refresh will be for half the state in winter 2025.

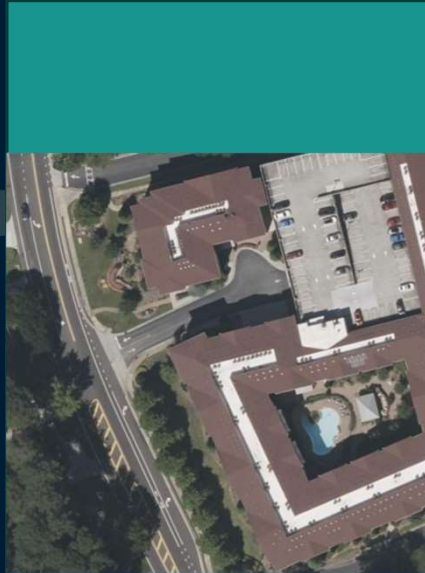
The remaining half of the state will be refreshed in winter of 2026.



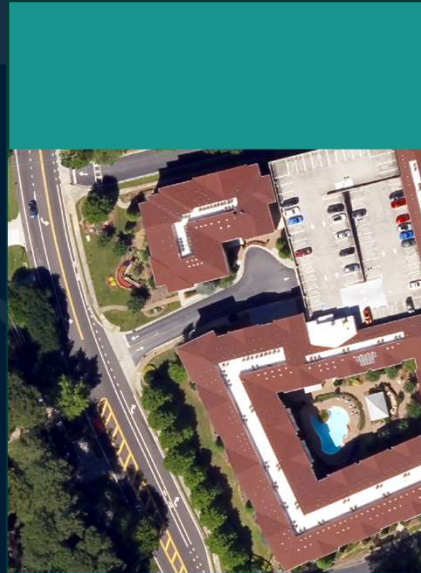
Current Vintage



OLD **GOOGLE** IMAGE



1st VEXCEL
DELIVERY



REPROCESSED
SAMPLE

Imagery Examples

Next Steps

- Working group to meet and determine desired color corrections as well as refresh order of the state
- The color corrections should take 12ish weeks to recalibrate once the working group has made their determination.
- Begin Development of Outreach, Education, & Training Program (GIO)
 - *ACTION*: Send us ideas for events to participate in (conference, user groups, council meetings, lunch & learns, etc.)



911 Data Programs



*Address & Road
Data Infusion*



*Statewide Imagery
Program*

Thank You & Questions