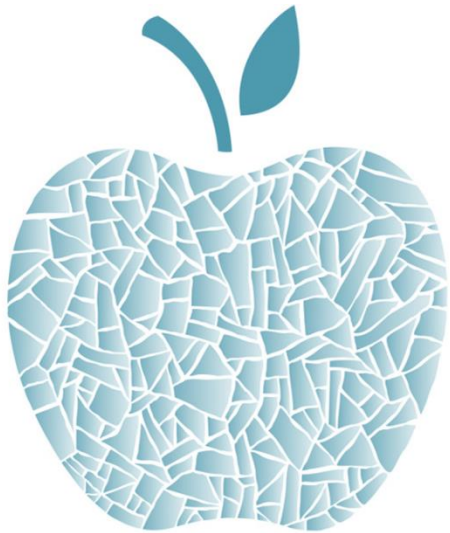


# Joining Forces to Improve Health Outcomes in Metro Atlanta



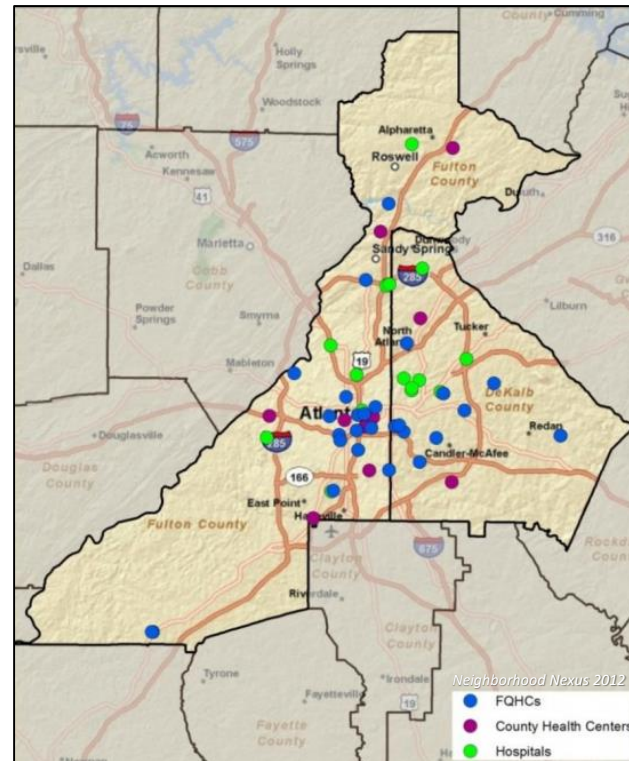
A R C H I

March 9, 2016



# Problem

Fulton and  
DeKalb Counties



*The real opportunity lies in collaboration.*

Atlanta Regional Collaborative for Health Improvement



# Solution

Led by United Way, ARC, and Georgia Health Policy Center



## ARCHI

Atlanta Regional Collaborative for Health Improvement

*Joining Forces to Improve Health Outcomes in Metro Atlanta*

Funders (CDC, Kaiser, St. Joseph's Healthcare, Grady, and the Lead Organizations)

Public Health, Hospitals, FQHCs, Physicians, Behavioral and Other Providers

Business, County Commissioners, Faith Leaders, Insurers, Philanthropy

### Atlanta Regional Collaborative for Health Improvement



# Solution



Atlanta Regional Collaborative for Health Improvement

## Select Initiatives...\*

## Sliders Set the Reach, Intensity, and Cost for Each Initiative\*

- Risk**
- Care
- Cost
- Trends

- Definitions
- Costs
- Specs



### Enable Healthier Behaviors

0% 50% 100% Start 2013 ▼

For DisAdv Only



### Reduce Crime

0% 50% 100% Start 2013 ▼

For DisAdv Only



### Reduce Environmental Hazards

0% 50% 100% Start 2013 ▼

For DisAdv Only



### Create Pathways to Advantage

0% 50% 100% Start 2013 ▼

**Initiative Assumptions**

**Reset All**

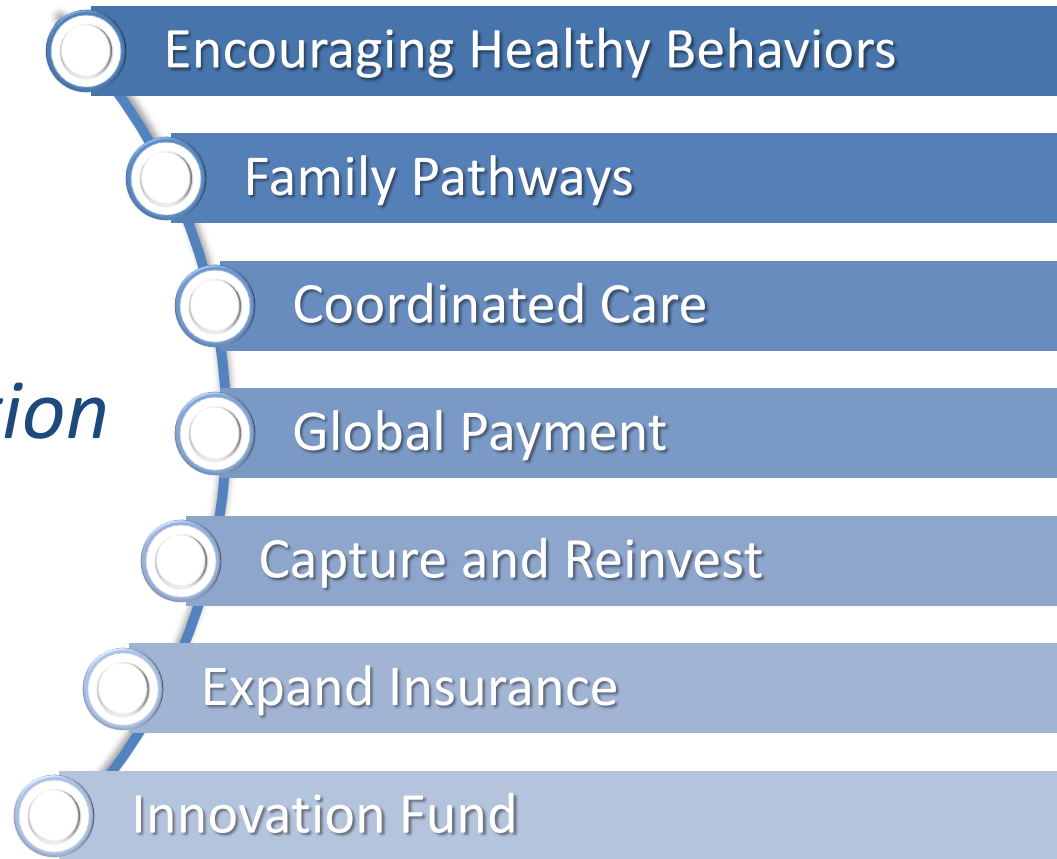
\* All choices will be retained for new scenarios, until reset

**Fund Initiatives**



# Solution

## *Atlanta Transformation*



- Expand All
- Close All
- Guide
- Indicators
- Stakeholder Indicators
- Net Incomes
- Cumulative Results
- ROIs
- 4-Panel
- ▶ HEALTH
- ▶ COSTS
- ▶ CARE
- ▶ PROVIDER:
- ▶ SPENDING
- ▶ REINVESTM
- ▼ PRODUCTIV
- Value
- Worker ca
- Value net
- ▼ - Value
- \_\_ Value

## Progress Toward Core Values

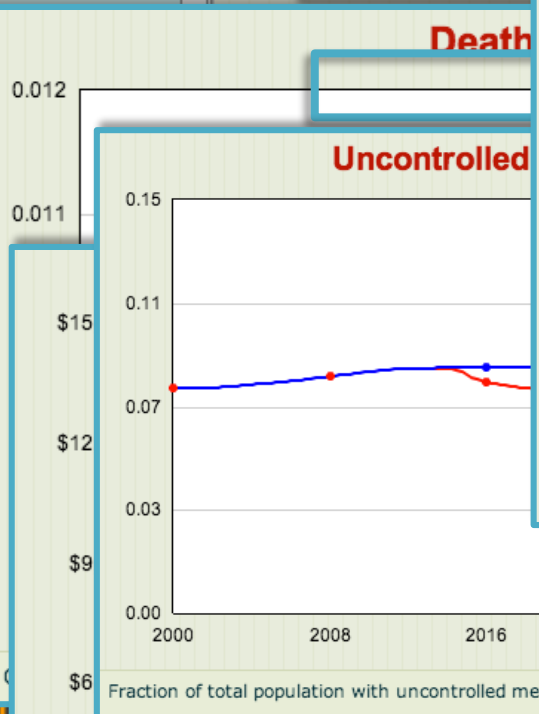
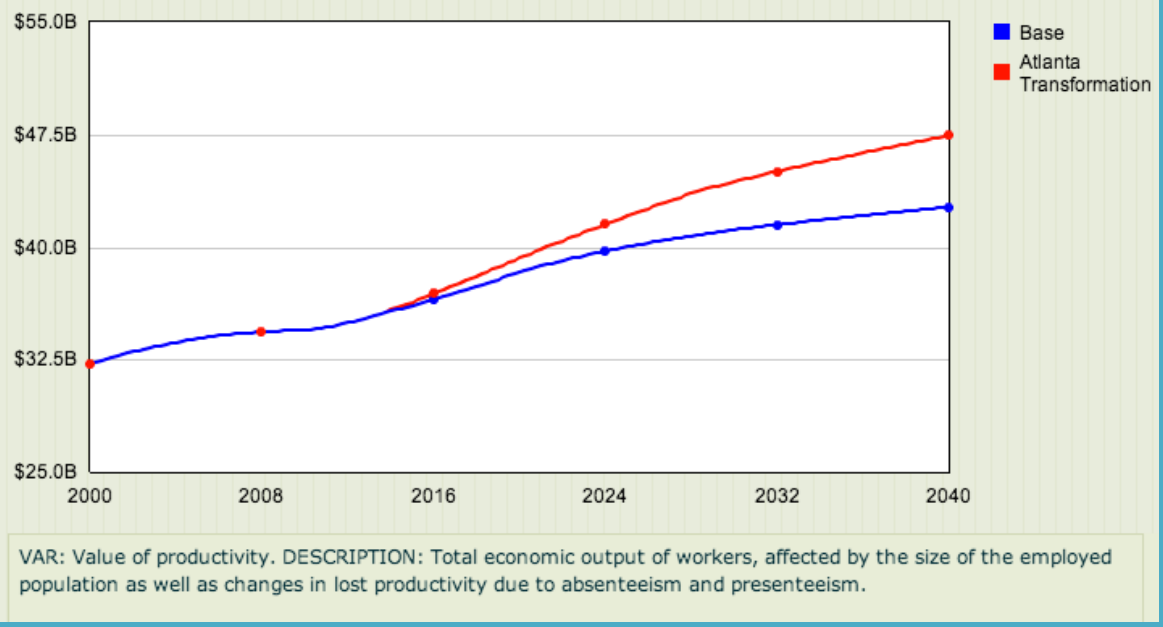
Scenario: Atlanta Transformation

Percent Change  
Health  
↓ -16.2% De

Death

Uncontrolled

## Value of productivity



Value of productivity  
Workforce care costs, per cap



**Solution**

Distributed approach

Atlanta Regional Collaborative for Health Improvement



# ARCHI Partners

- Alliant GMCF
- American Cancer Society
- Atlanta Community Food Bank
- Atlanta Neighborhood Development Partnership
- Atlanta Regional Commission
- Cathie Berger
- CHIP (Community Health Interfaith Partnerships)
- Civic League of Atlanta
- Club E Atlanta
- Community Advocate
- Community of College Park
- Concerned Black Clergy (Rev. Frank Brown) & Reginald Figures
- DeKalb County Board of Health
- DeKalb County Government
- Diabetes Community Action Coalition, Inc.
- Emory Healthcare
- Emory University – Urban Health Program Dept of Peds
- Emory Urban Health Initiative
- Erica T. Edmond
- Evonne Yancey
- Families First, Inc.
- Fulton County Government
- Fulton County Schools - Achievement Zones
- Fuqua Center/Emory University
- Georgia Department of Public Health
- Georgia Health Policy Center
- Georgia Institute of Technology
- Georgia State University
- Georgia Watch
- Get Georgia Reading – The Annie E. Casey Foundation
- Gordon Meredith
- Grady Health System
- Individual East Point Community Leader
- Kaiser Permanente of Georgia
- Marcus Autism Center/Children’s Healthcare of Atlanta/Emory Dept of Pediatrics
- Moni Cares, Inc.
- One Talent, Inc
- Partnership for Southern Equity
- Paul Stange
- Piedmont Healthcare
- Rite Aid Pharmacy
- Saint Joseph Mercy Care
- Saint Joseph’s Health System
- South Fulton Health Services Coalition
- Southside Medical Center
- The Carter Center
- The Community Foundation for Greater Atlanta, Inc.
- United Way of Greater Atlanta
- Veterans Empowerment Organization
- West End Medical Centers, Inc.



# ARCHI- Progress to Date

- Bringing the model to life: Tri-Cities and DeKalb
- Combining Health and Community Development \$\$
- Learning from others- SCALE
- Focus on Healthy Behaviors- PICH
- Growing membership (70+)
- Fielding new opportunities
- Fundraising