

Atlanta Regional Commission

Health Care and Transportation
Intersection

Mary Tonore Blumberg

What is the Atlanta Regional Commission?

- Regional planning and intergovernmental coordination agency for 10-county area – 4.2 million people
- Metropolitan Planning Organization and Area Agency on Aging



www.atlantaregional.com



Transportation Programs

Funding

- FTA 5310
- FTA 5317
- OAA Title III
- Behavioral Health and Disability Funds
- ADA
- SSBG
- CMS Medicare Demonstration

Types of Rides

- Demand Response
 - Traditional
 - Volunteers
 - Vouchers
- Fixed and flex route shuttles

5310 Type Trips/Rider

July 2015 – April 2016 (26,848 riders)

- 4% - Employment
- 39% - Medical
- 57 % - Personal
- 1274 unduplicated riders/month
 - 82% 65+
 - 31% Persons with Disability
 - 17% below poverty



5310 Data

- Trip mileage –12 miles/one-way
- One-way trips – \$ 21/trip
- Shuttle service hours
- Shuttle passengers

Why Transportation Matters

- Top Consumer Need/Request
- Vital for Aging Population
- Transportation Maintains/Improves Quality of Life
- Improved Health Outcomes

Community-based Care Transitions Program

- *GOAL: reduce all cause all condition 30 day readmissions by 20% - 6 hospital partners*
- *Target population = HIGH RISK Medicare FFS beneficiaries*
- *Evidence-based Coaching self-management intervention (CTI™)*
- *Enhanced services*
 - ✓ *Home Delivered Meals*
 - ✓ *Homemaker Services*
 - ✓ **TRANSPORTATION**

READMISSION COMPARISON

October 1, 2014- January 31, 2016

Cohort	N	30 day readmission (baseline 19.4%)			Readmission Rate
		Expected	Actual	Avoided	
Enrolled w/o transportation services (94% of all enrolled)	7,937	1,540	1,191	349	15%
Enrolled and receiving transportation services (6% of all enrolled)	464	90	32	58	7%
TOTALS	8,401	1,630	1,223	407	

Medicare Savings

Cohort	N	Medicare cost (\$409.91 per beneficiary)	Avoided Medicare costs (\$10,000 per avoided readmission)	Net Gain (savings-cost)
Enrolled w/o transportation services	7,937	\$3,253,456	\$3,490,000	\$236,544
Enrolled and receiving transportation services	464	\$190,198	\$580,000	\$389,802
TOTALS	8,401	3,443,654	4,070,000	626,346



7% Increased Success Rate
in Physician follow-up visit
within 14 days
with
Transportation Services



www.Simply Get There.org

- VTCLI one-call, one-click award
- “Trip discovery” tool for public, private, specialized and volunteer transportation services
 - Similar to kayak.com
 - Pulls from two ARC-developed databases, ESP and atltransit.org
- Responsive design for use on computers, tablets, and smartphones
- Unique to the Atlanta region
- **Includes specialized transportation**
- **Does not have scheduling capabilities**

<http://www.simplygetthere.org/>

SIMPLY GET THERE

[Providers](#)[Sign up](#)[Log in](#)[Trip](#)[Options](#)[Review](#)[Plan](#)[NEXT](#)

Trip Details

**Trip*** Round trip One-way trip**Trip Options***

- Bike
- Carpool
- Drive
- Specialized Services
- Vehicle for Hire
- Public Transit
 - Bus
 - Rail

Trip Purpose*

General Purpose

Departing From***Arriving At*****Trip #1 (Outbound)***

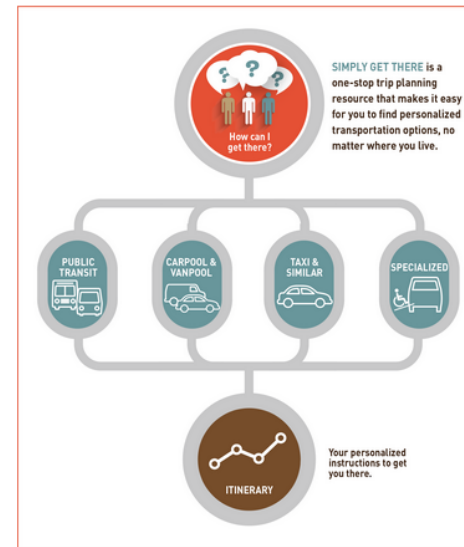
Arriving By 09/14/2015 6:00 pm

Trip #2 (Return if round trip)*

Departing A 09/14/2015 8:00 pm

[NEXT](#)

About Simply Get There



Please click [here](#) for more information about transportation options in the Atlanta region. If you need someone to compare trip options by telephone, please call 404-463-3333.

Phase 2: In Development

- System design specifications to expand software application capabilities and allow “trip transaction”
 - Centralized eligibility
 - Triaging to the best provider and mode
 - Booking
 - Scheduling
 - Dispatching
 - Payment
- Make the design to be released as open source software so that others can use it.





Opportunities

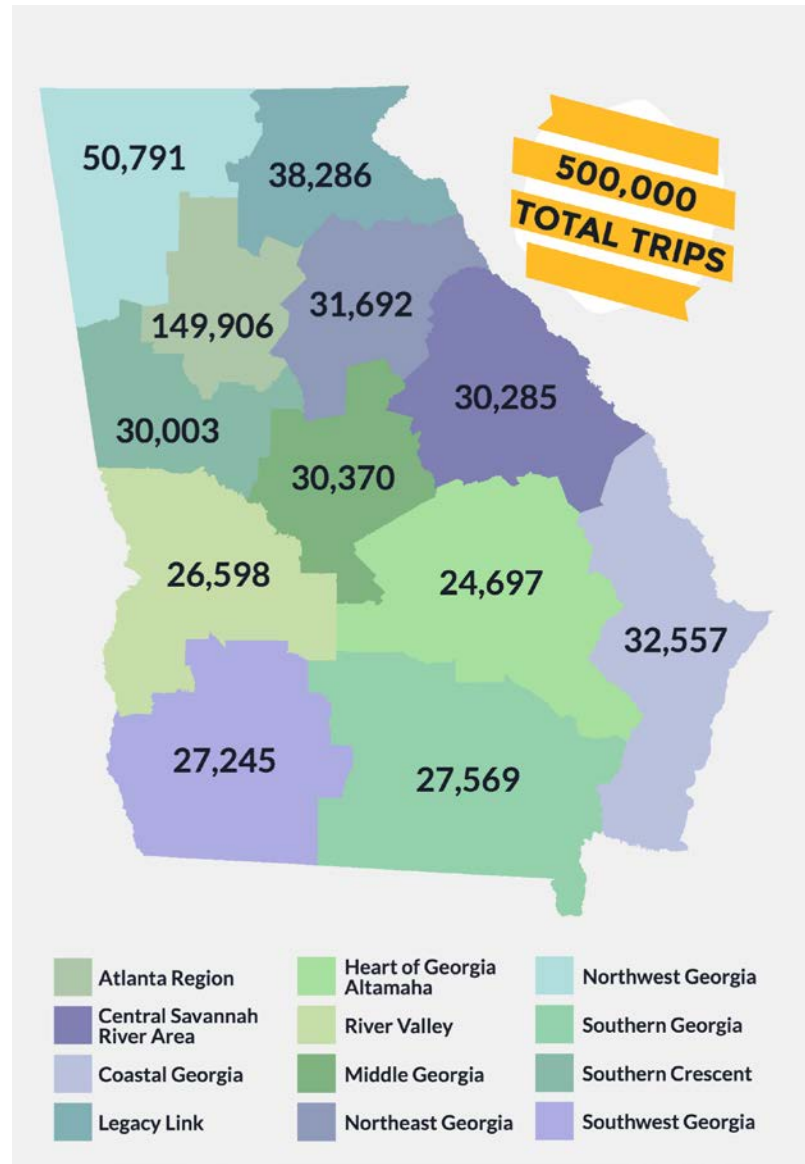
- Funding Flexibility at Local Level – re-examine outmoded rules
- Design Programs at Onset to Capture Data
 - Consider testing multi-funding data pilot
- Improve Provider Capacity
 - Training and Education
 - Implement technology to efficiently deliver services and capture data



What's Next

- Travel Training with Health Care partners
- Pilot with Transportation Network Company (TNC)
- Continue to test and improve data collection to measure program outcomes and drive system improvements
- Seek State funding for transportation with Co-Age

\$10 million for additional rides



“We need to have transportation for the seniors to go to activities, to get to the doctor or the store. It is very important that we increase the funding for transportation for seniors throughout Georgia.”

--Melissa Firestone

