



Accountable Health Communities (AHC)



*Model Overview and
Requirements*

What Does the Accountable Health Communities Model Test?

- 5-year model
- Will systematically identifying and addressing the health-related social needs of community-dwelling Medicare and Medicaid beneficiaries impacts health care quality, utilization and cost?

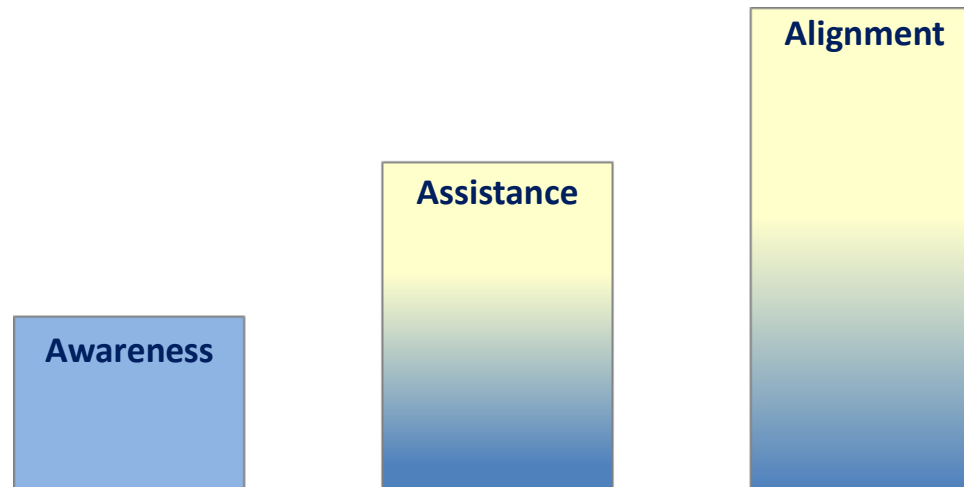
Model Performance Metrics

- Healthcare utilization: emergency department visits, inpatient admissions, readmissions and utilization of outpatient services
- Total cost of care
- Provider and beneficiary experience

Accountable Health Communities Model

Intervention Approaches:

Summary of the Three Tracks



Track 1 Awareness – Increase beneficiary *awareness* of available community services through information dissemination and referral

Track 2 Assistance – Provide community service navigation services to *assist* high-risk beneficiaries with accessing services

Track 3 Alignment – Encourage partner *alignment* to ensure that community services are available and responsive to the needs of beneficiaries

FUNDING

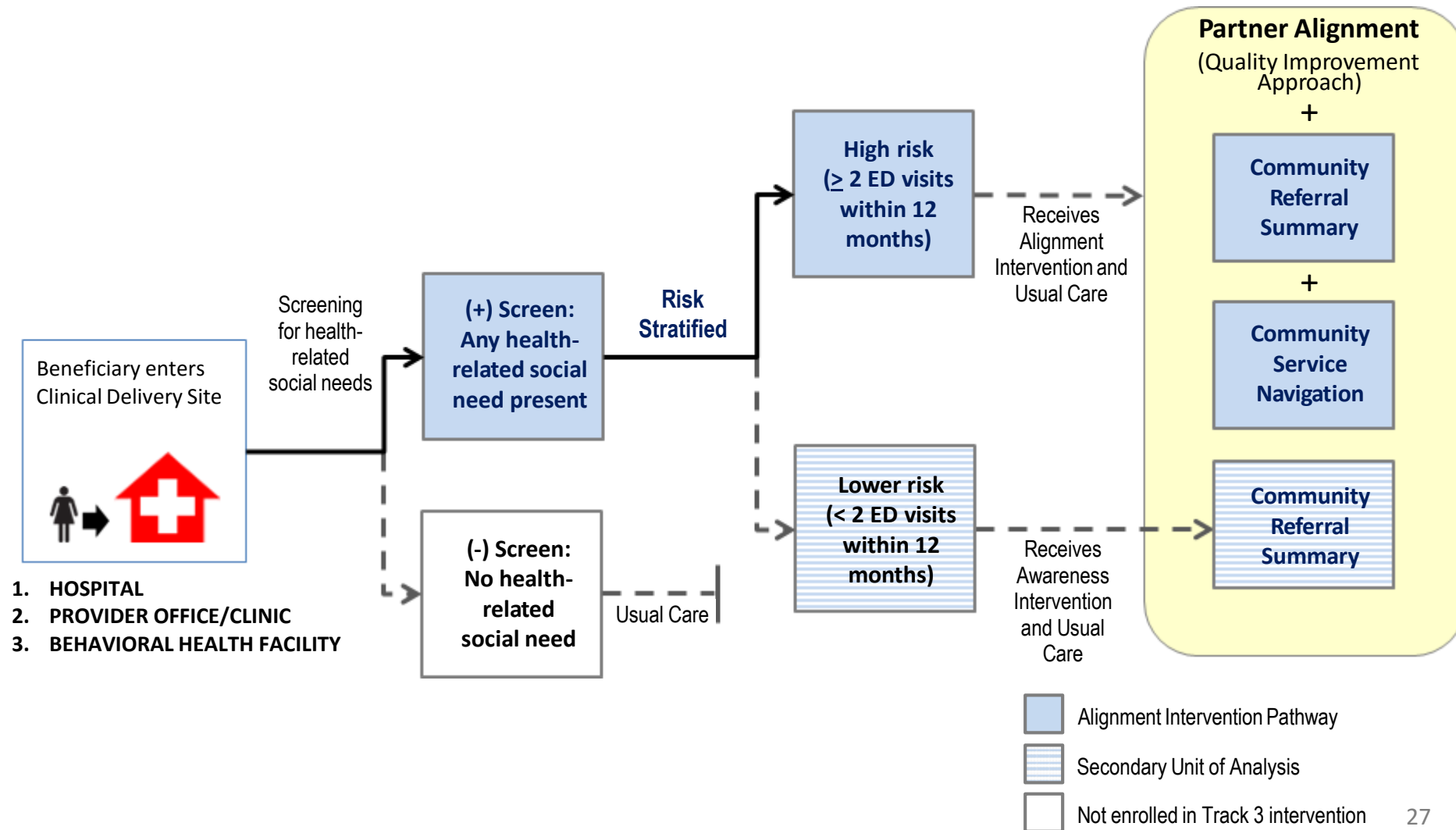
Total Funding

- \$12 million to 12 bridge organizations to implement Track 1 – Awareness intervention, \$200,000/year
- \$30.84 million to 12 bridge organizations to implement Track 2 – Assistance intervention, \$514,000/year and
- \$90.20 million to 20 bridge organizations to implement Track 3 – Alignment intervention, \$902,000/year

Model Participants

- Bridge organization
- At least one state Medicaid agency
- Community service providers that have the capacity to address the core health-related social needs
- Clinical delivery sites, including at least one of each of the following types:
 - Hospital
 - Provider of primary care services
 - Provider of behavioral health services
- ADVISORY COMMITTEE

Track 3 – Alignment Evaluation Diagram



Selection Criteria

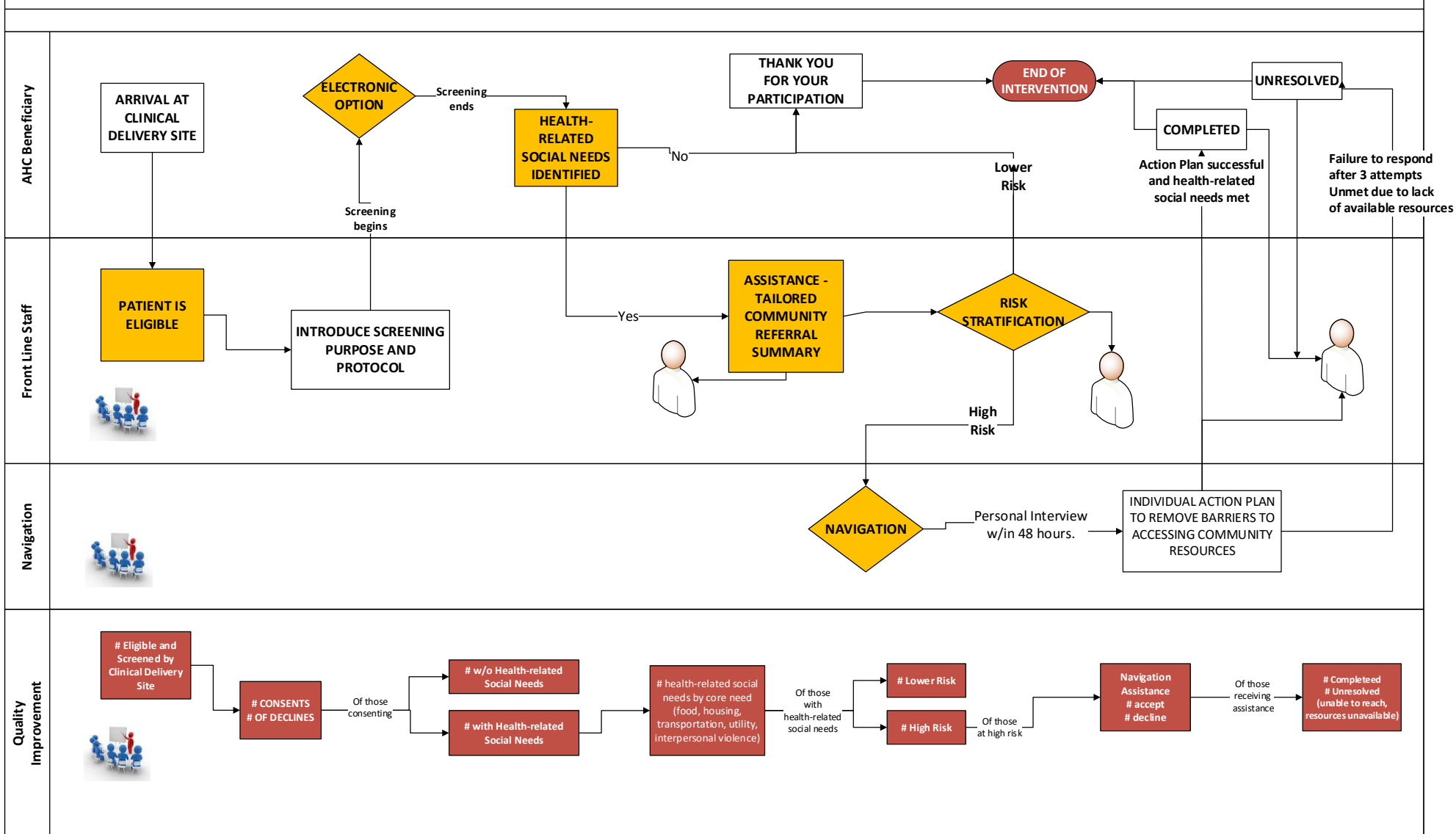
The selection criteria for applications will be based on the prospective bridge organization's ability to:

- Meet eligibility and application requirements for the track chosen by the applicant organization
- Demonstrate commitment, collaboration, and engagement of community stakeholders
- Provide required social needs data and Medicare and Medicaid claims data on beneficiaries in the model to CMS and its contractors
- Demonstrate readiness to implement the intervention

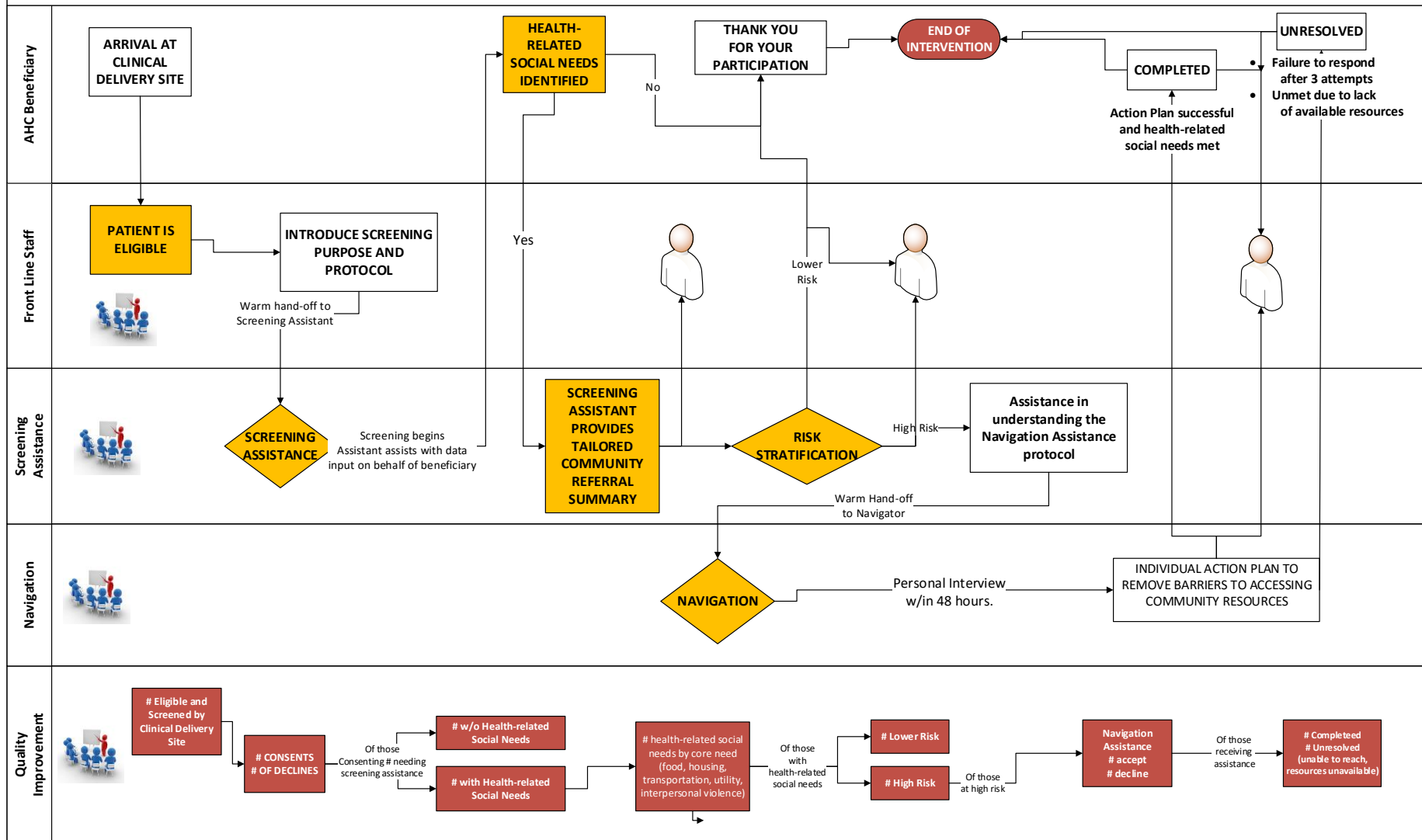
Accountable Health Communities Model Dates

Funding Opportunity Announcement Posting Date:	January 5, 2016 ✓
Letter of Intent to Apply Due:	February 8, 2016 ✓
Electronic Cooperative Agreement Application Due:	May 18, 2016 (1 PM ET)
Anticipated Issuance of Notices of Award:	December 2016
Anticipated Start of Cooperative Agreement Period of Performance:	January 2017

Atlanta Accountable Health Community Model – ELECTRONIC SCREENING OPTION



Atlanta Accountable Health Community Model – SCREENING ASSISTANCE OPTION



Cyndi Burke
404-801-7574
cburke2@atlantaregional.com

