



3 Trail & Bike Plans

June 5, 2026

Eric Meyer – emeyer@atlantaregional.org

Transportation Department
Atlanta Regional Commission

Vision

ONE **great** REGION

Mission

Foster thriving communities for all within the Atlanta region through collaborative, data-informed planning and investments.

Values

Excellence | **Integrity** | **Equity**

Goals



Healthy, safe, livable communities in the Atlanta Metro area.



Strategic investments in people, infrastructure, mobility, and preserving natural resources.



Regional services delivered with **operational excellence** and **efficiency**.



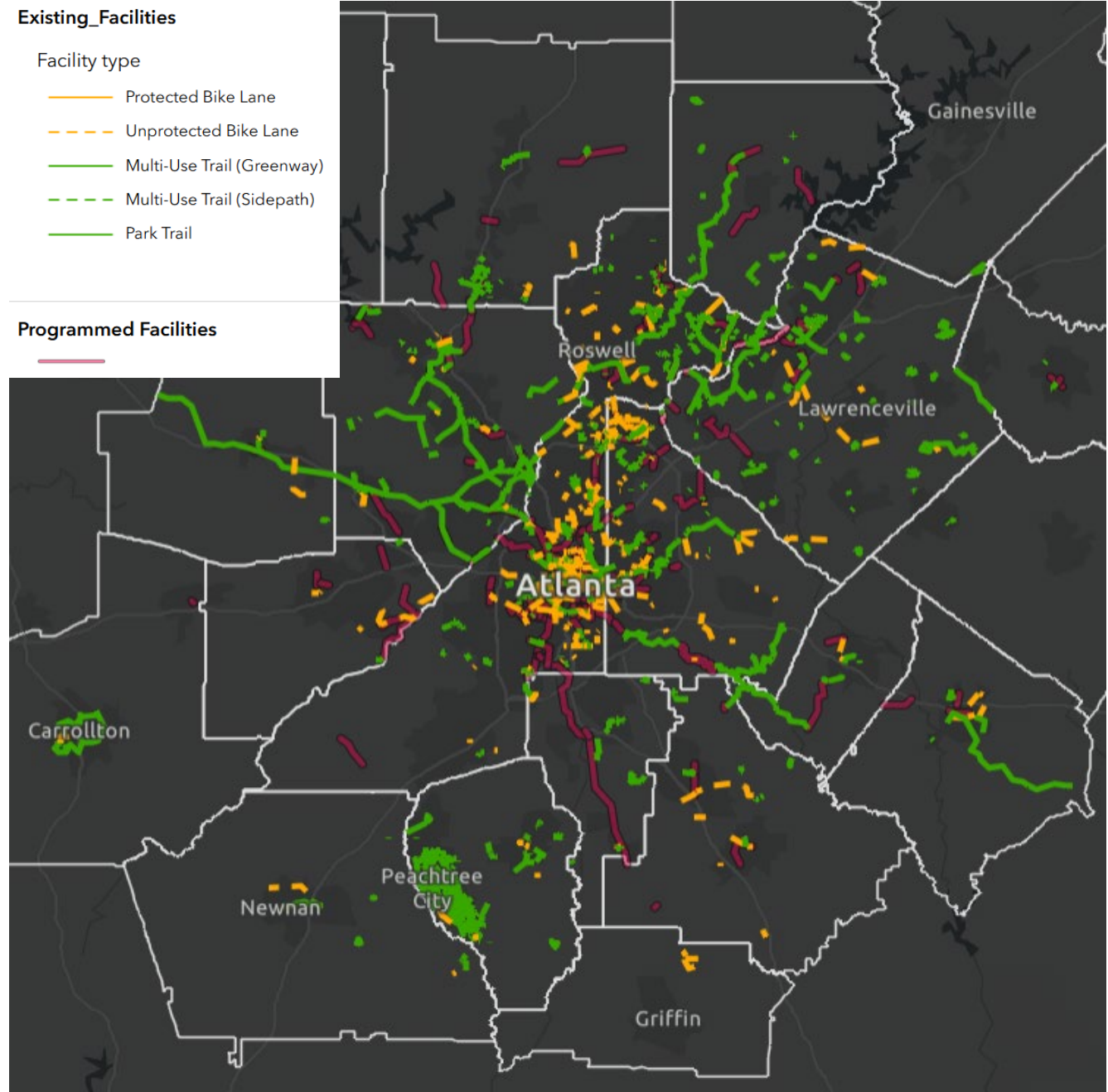
Diverse stakeholders engage and take a regional approach to solve local issues.



A competitive economy that is inclusive, innovative, and resilient.

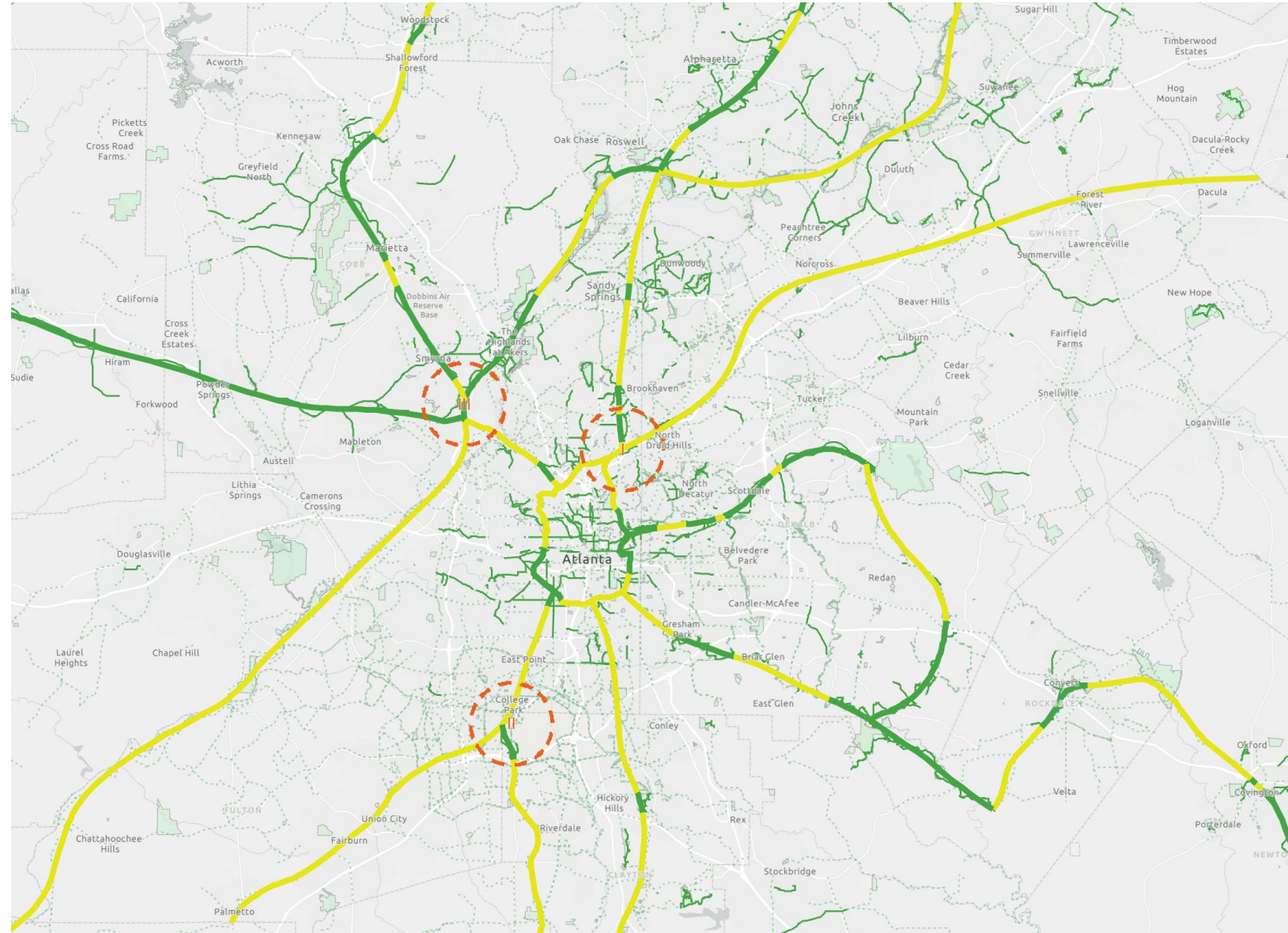
Existing & Programmed Trails / Bike Facilities (2025)

- Existing trails: 770 miles
- Existing Protected Bicycle Lanes: 26 miles
- Programmed trails: 228 miles
- Planned trails: 4,000+ miles
- Nearly \$4 Billion in MTP



Regional Trail Vision

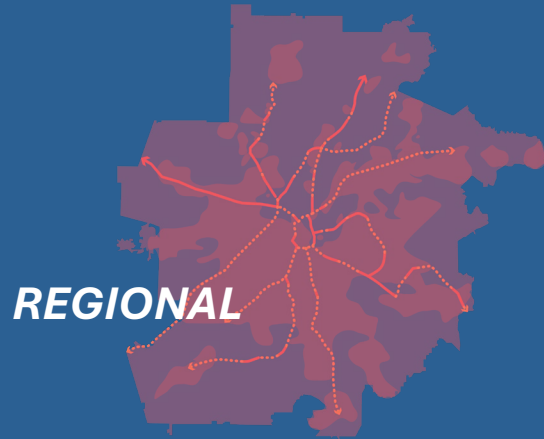
- Make walking and bicycling **safe, comfortable, and convenient**
- Follow **optimum desire lines** as closely as possible
- **Connect** and cross through municipalities
- Have a high- and **uniform-quality** throughout the route



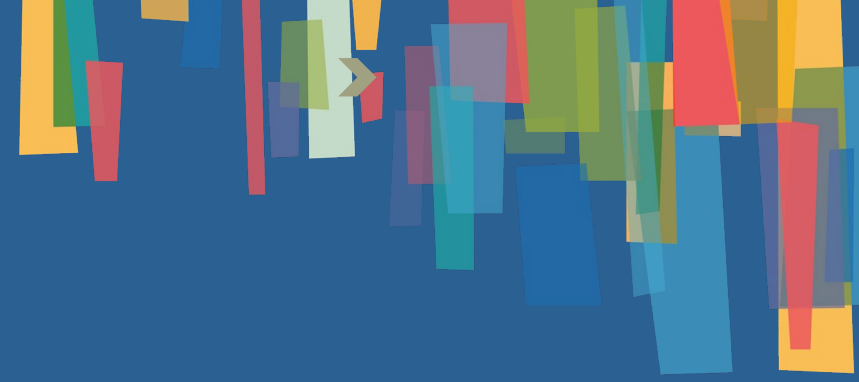


Trail + Bike Plans

3 Study
Focus
Areas,
One
Vision

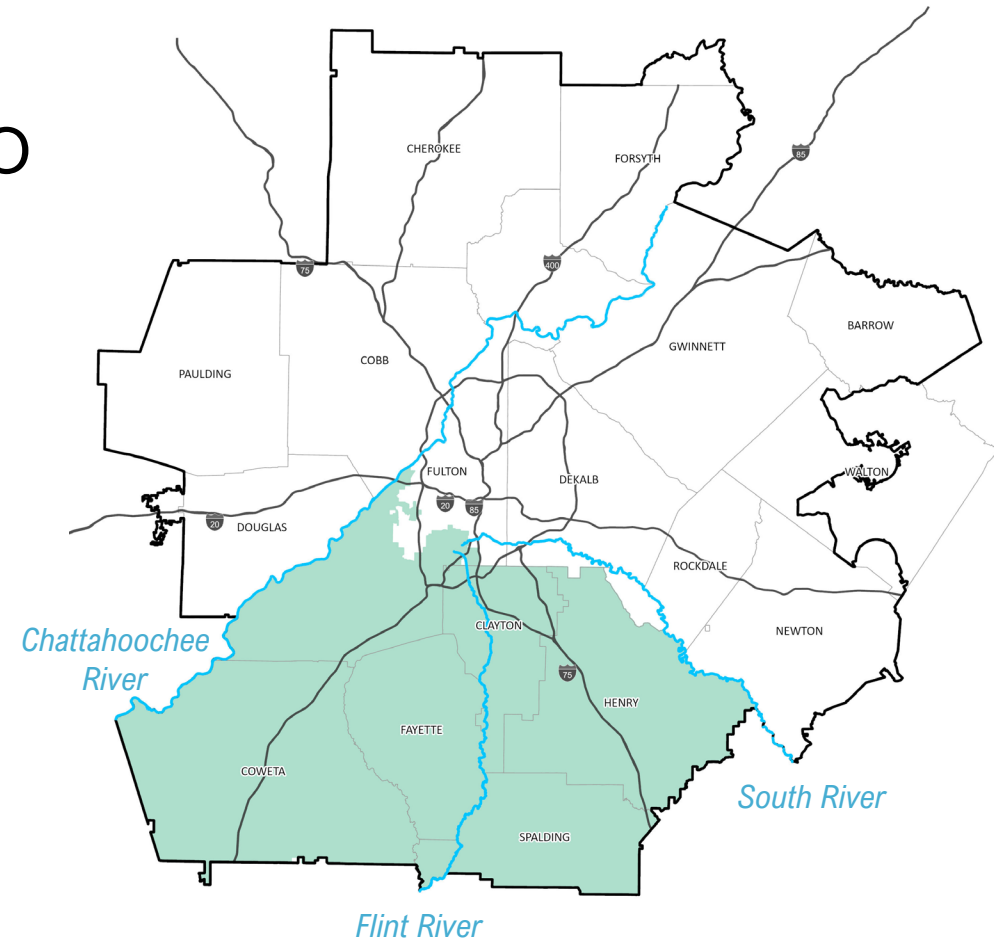


The vision of this plan is to make the Atlanta Region one of the **most connected and safest regions in the United States for walking and bicycling**, utilizing active transportation to improve mobility, safety, and economic competitiveness for residents and communities.

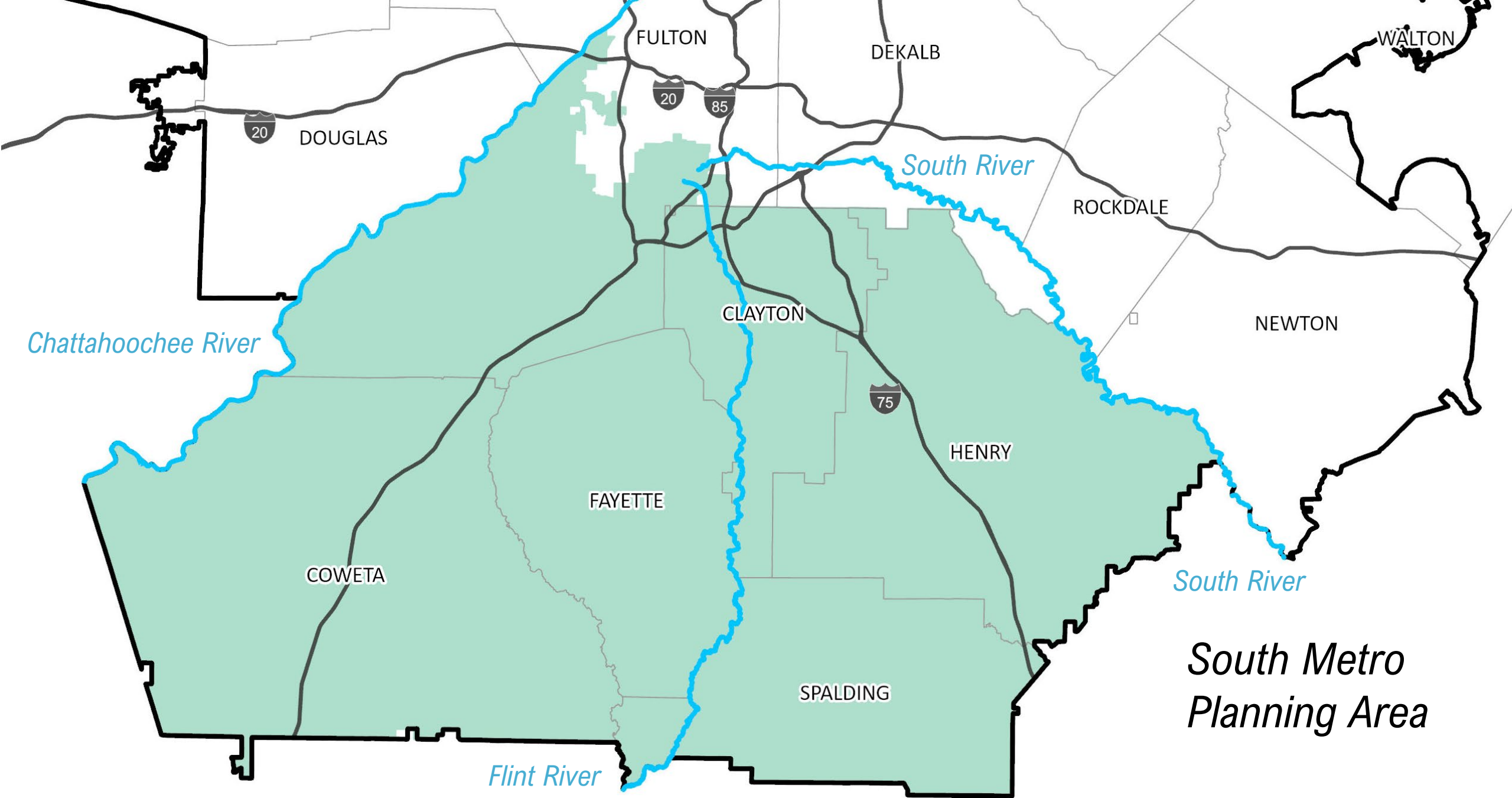


Regional Trails Initiative

- ▮ **Regional Trail + Bicycle Facility Network Plan**
Comprehensive regional vision for 19-county MPO
- ▮ **South Metro Trail + Bicycle Facility Plan**
Deeper study of 6-county area of Regional Trail Plan; identifies specific alignment options and implementation pathways
- ▮ **Flint River Trail Plan**
Master trail plan for quarter-mile-wide corridor centered on Flint River from headwaters in East Point to the southern edge of Spalding County
- ▮ **Budget:** \$3,500,000 total for all three plans
- ▮ **Timeline:** Kickoff in April, work will take 18-24 months



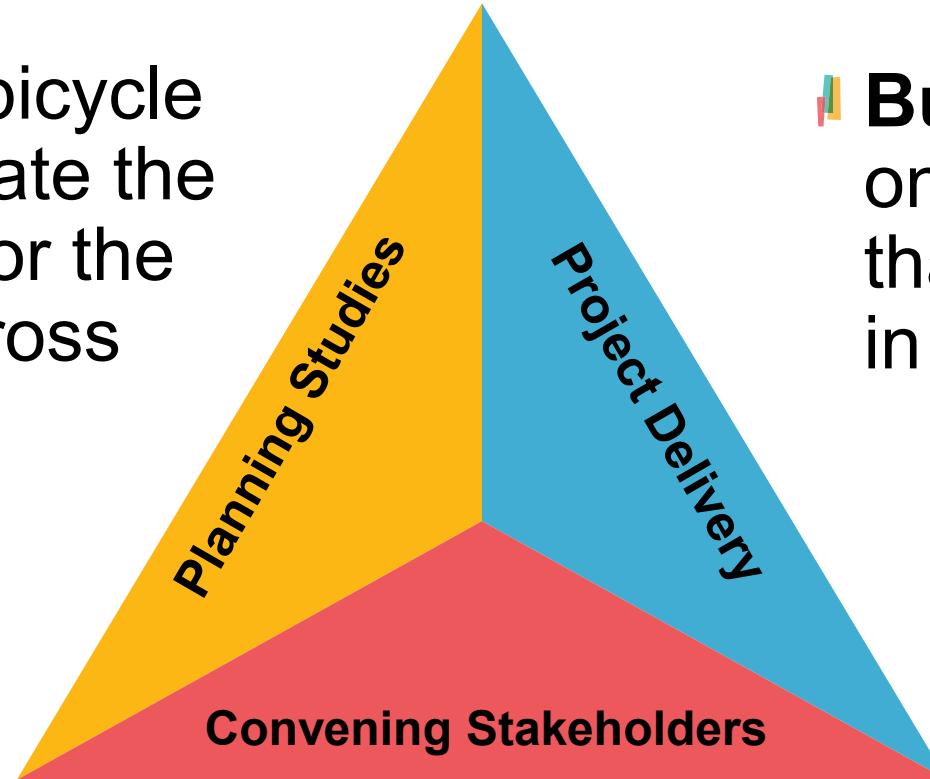
South Metro Planning Area



Trails - Connecting the South Metro

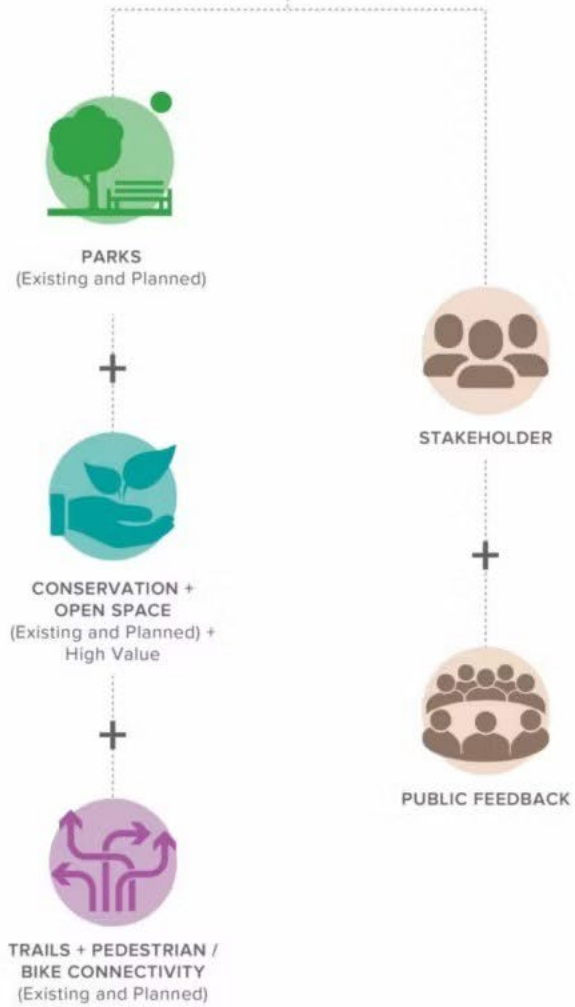
Plan: Three trail/bicycle plans that will create the long-term vision for the Flint and trails across South Metro

Build: Trail segments on the Flint River Trail that can be accelerated in the near term

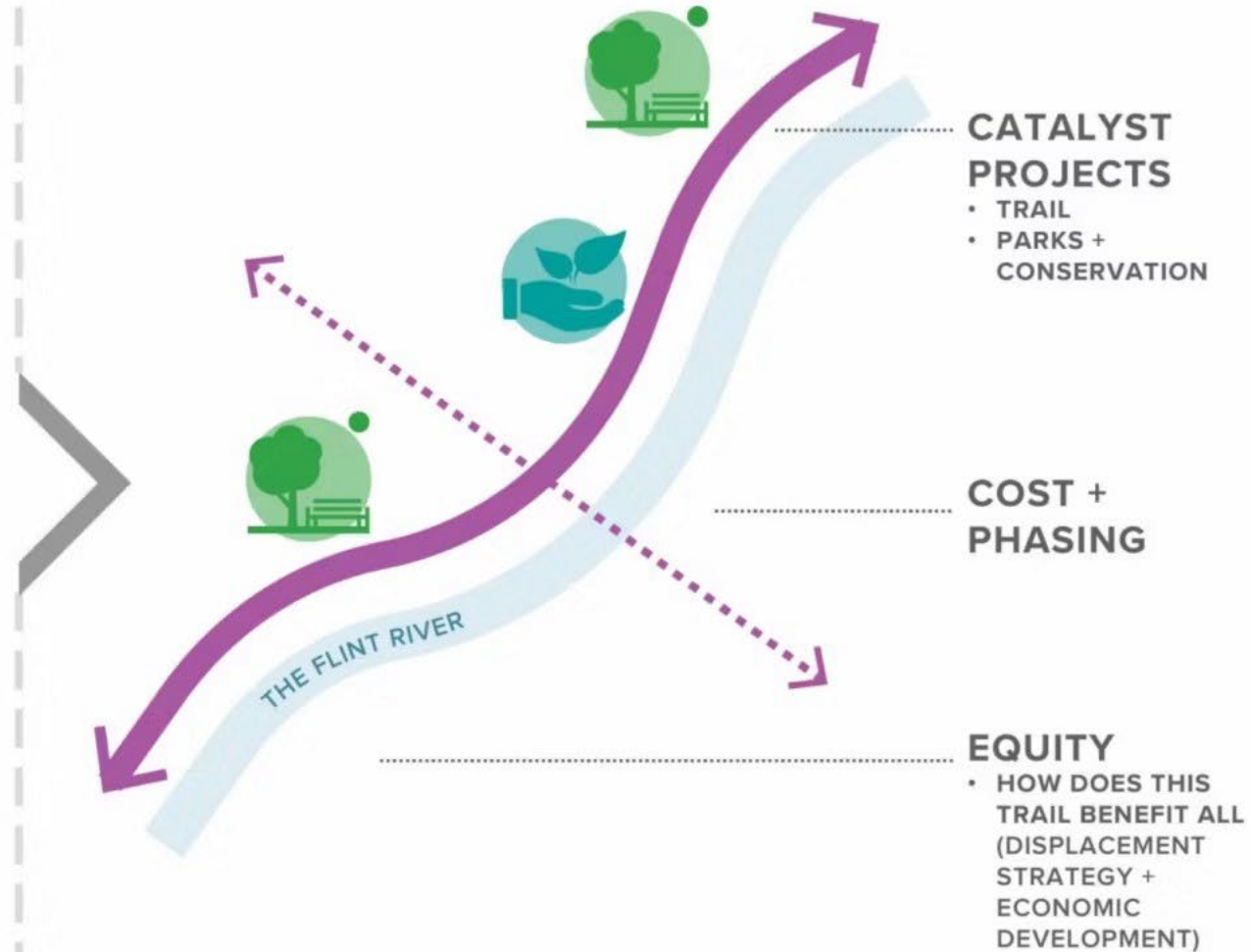


Convene: Bringing together leadership in support of the Flint and trails across the South Metro

INPUTS



FLINT RIVER CORRIDOR PLAN





Flint River Study Area

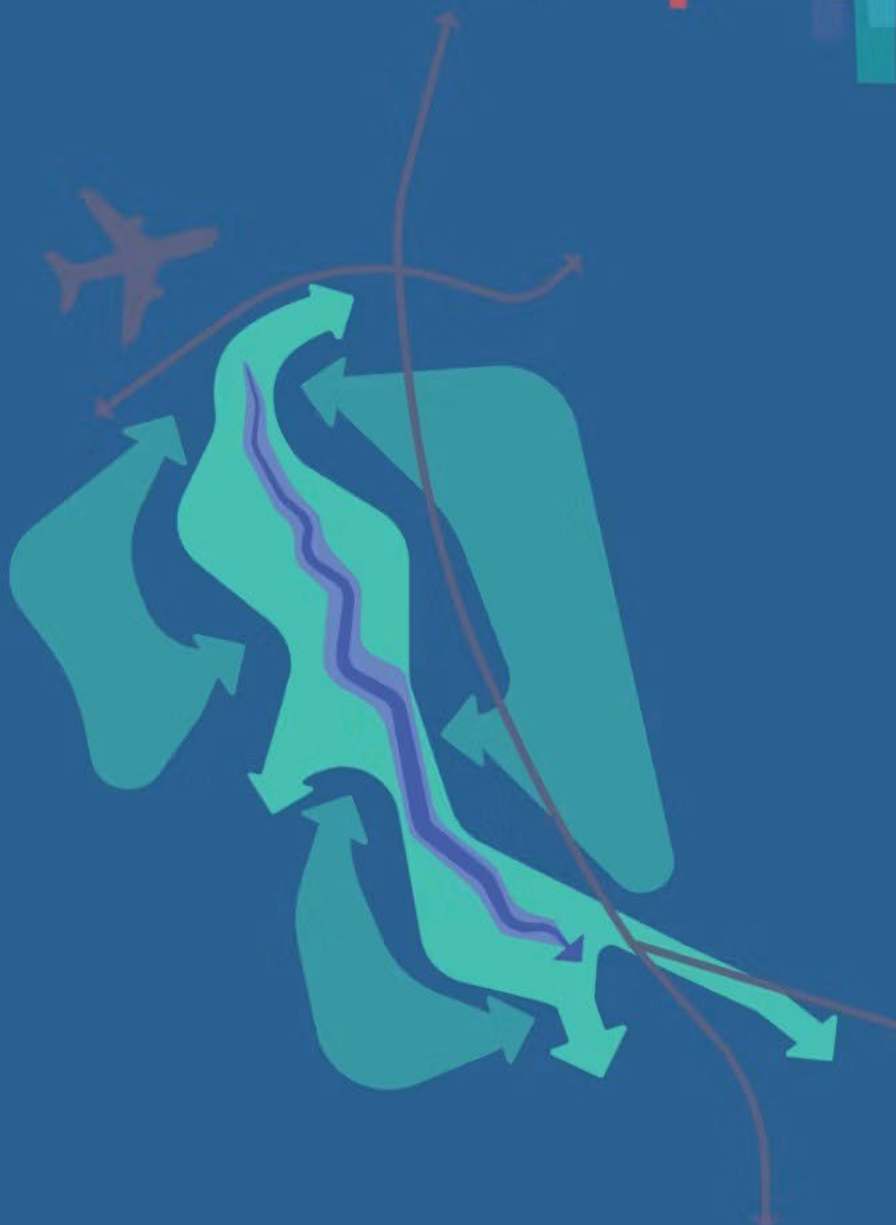
- Flint River Trail corridor is 40 miles from the headwaters in East Point to the boundary of the Metro area at Spalding County
- The study area will encompass the Flint River corridor extending a half mile on either side of the river, and will span portions of Fulton, Clayton, Fayette, and Spalding Counties





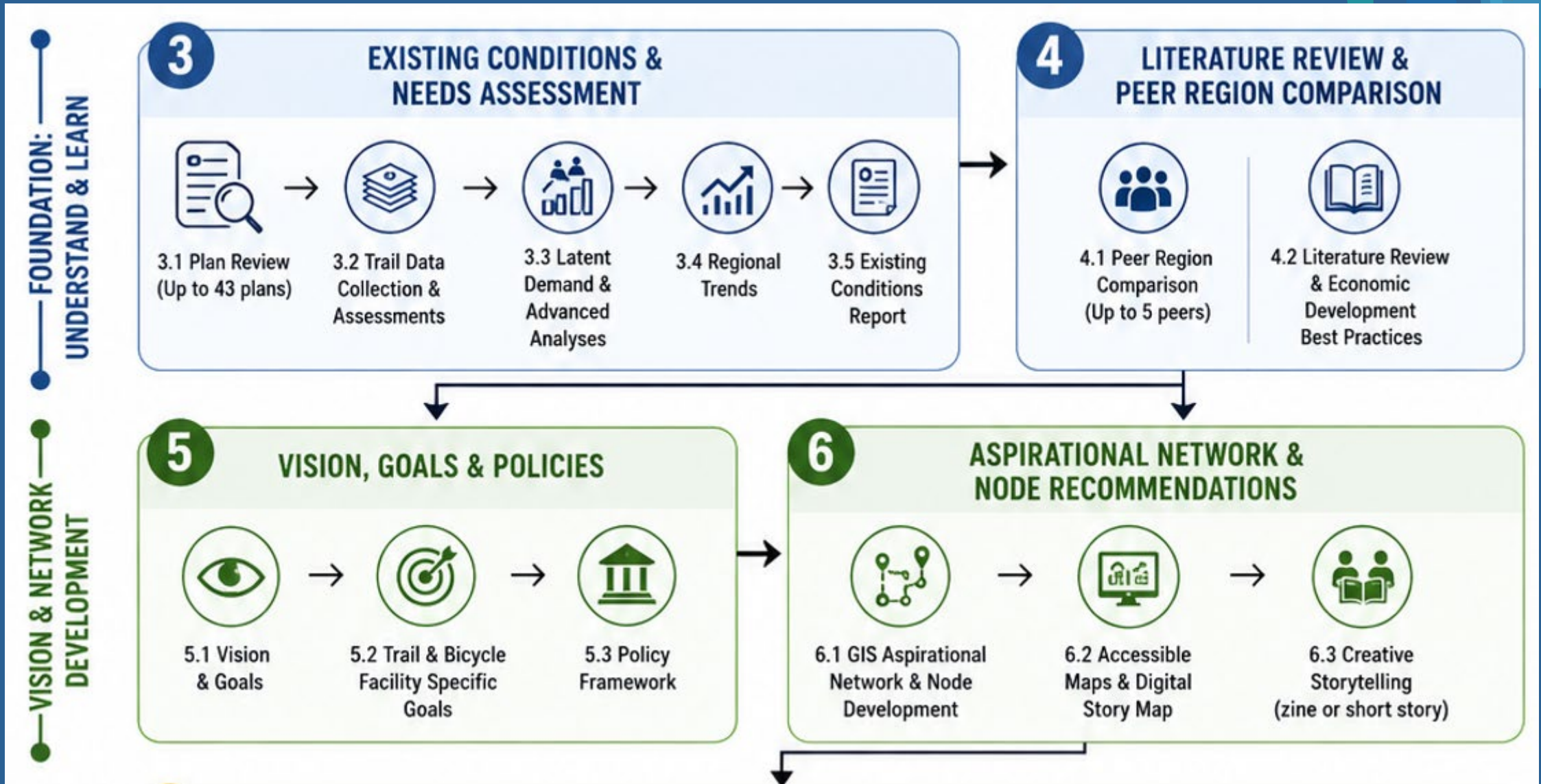
Flint River Corridor Early Tasks and Actions:

- Plan review
- Resource analysis
- Landscape analysis
- Preliminary alignment study
- Sub area definition
- Branding



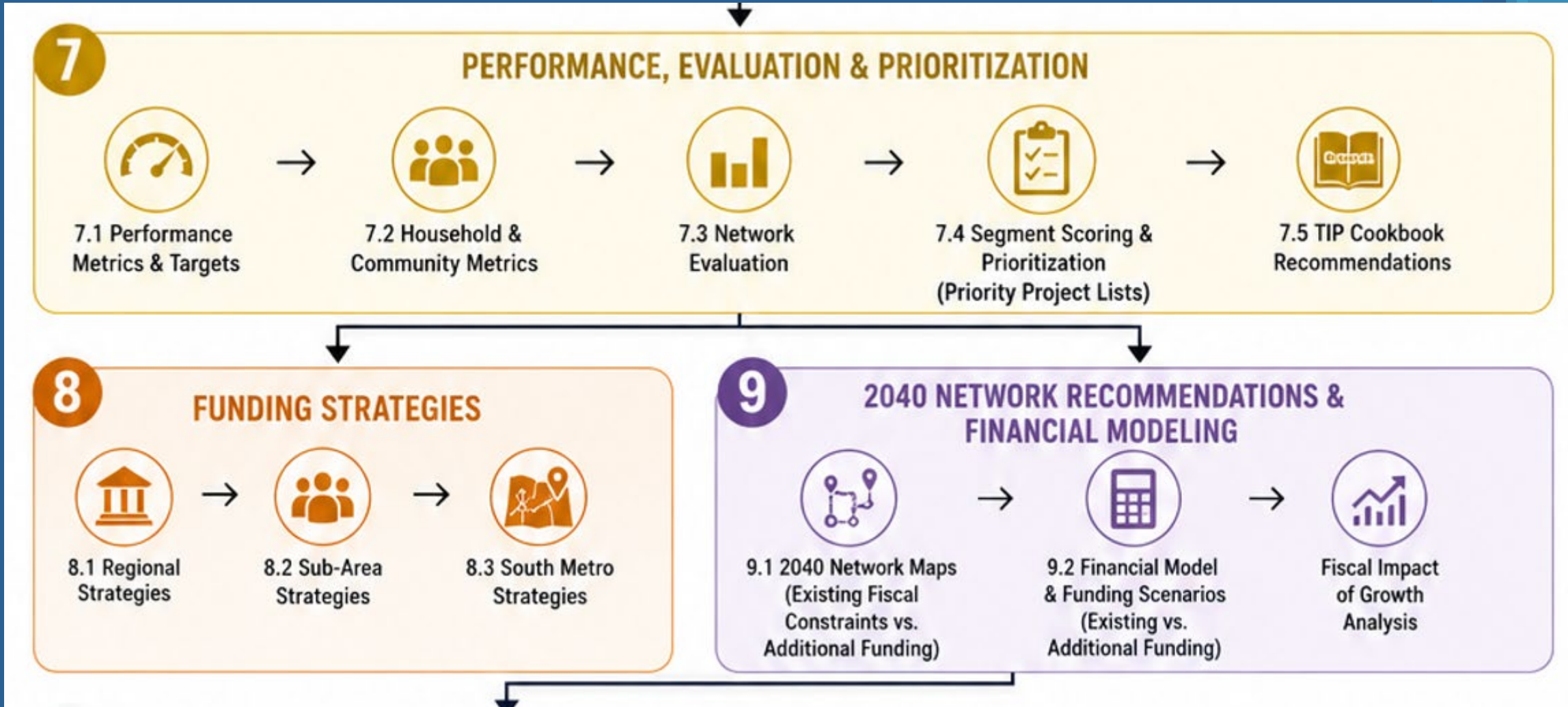


Regional and South Metro Trail and Bike Plans: *Overview of Tasks*





Regional and South Metro Trail and Bike Plans: *Overview of Tasks*





Regional and South Metro Trail and Bike Plans: *Overview of Tasks*

10 COST ESTIMATES & DELIVERABILITY

10.1 Deliverability Risks (Risk Register Matrix) → 10.2 Regionwide Cost Estimates (Per Mile & by Segment) → 10.3 South Metro Project Application & Delivery Playbooks (6 counties)

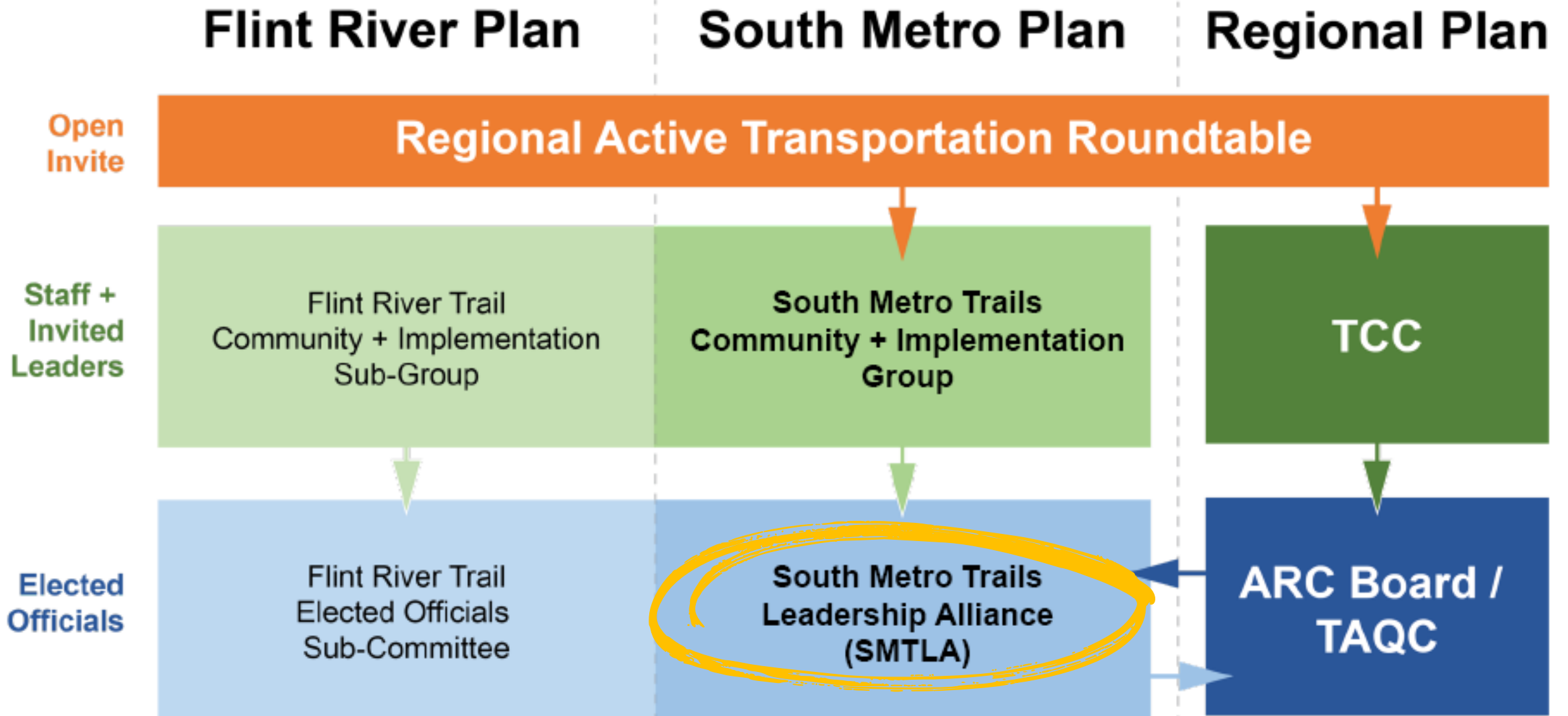
11 ACTION STEPS & RELATED RECOMMENDATIONS

11.1 Roles & Responsibilities 11.2 Local Government Guidance & Programs 11.3 Zoning & Land Use 11.4 South Metro Economic Development Playbook

12 FINAL PLAN DOCUMENTATION & COMMUNICATION

 12a Executive Summary (Print) 30 copies	 12b Maps & Posters (Print) 5 copies	 12c Digital Summary (Story Map / Dashboard)	 12d South Metro Executive Summary (Print) 20 copies	 12e South Metro Maps & Posters (Print) 5 copies	 12f South Metro Digital Summary (Story Map / Dashboard)	 12g Data & Final Files (All formats)
--	--	---	--	--	---	--

Planning Leadership Structure



South Metro Trails Leadership Alliance

- ▮ Collaboration to bring more bike and pedestrian infrastructure to South Metro
- ▮ Key stakeholder group for South Metro and Flint River Trail Plans
- ▮ Comprised of county commission chairs and mayors from South Metro. Fifteen attended the first meeting in October.
- ▮ GDOT board attended
- ▮ Convened and facilitated by ARC and Aerotropolis Atlanta Alliance
- ▮ Meeting three more times in 2026
- ▮ Next meeting: April 1, 2026



“We can no longer continue to work in silos. We must work together.”

-- Alieka Anders on-Henry, Chair
Clayton County Commission

Coordination with other Planning Efforts

MTP and CTPs

Metropolitan Transportation Plan (MTP)

- Q1 2026 – Q1 2028

Clayton CTP

- Q4 2025 – Q2 2027

Fayette CTP

- Q4 2025 – Q2 2027

South Fulton CTP

- Q2 2026 – Q4 2027

Other CTPs in Region

- Atlanta, North Fulton

CTP: Comprehensive Transportation Plan

GDOT

Rural Active Transportation Plan

- Finishing 2026

Urban Active Transportation Plan

- Q4 2026 – Q3 2028
- \$3.3M across all MPO areas in state
- Complete Streets Technical Assistance

ARC + GDOT - coordinating to minimize duplication

- GDOT will only be covering state routes / ARC will focus on all other facilities