



# ONE **great** REGION

## New Air Quality Rules

TCC Meeting

March 8, 2024



## Vision

ONE **great** REGION

## Mission

*Foster thriving communities for all within the Atlanta region through collaborative, data-informed planning and investments.*

## Values

**Excellence** | **Integrity** | **Equity**

## Goals



**Healthy, safe, livable communities** in the Atlanta Metro area.



**Strategic investments** in people, infrastructure, mobility, and preserving natural resources.



Regional services delivered with **operational excellence** and **efficiency**.



**Diverse stakeholders engage** and take a regional approach to solve local issues.



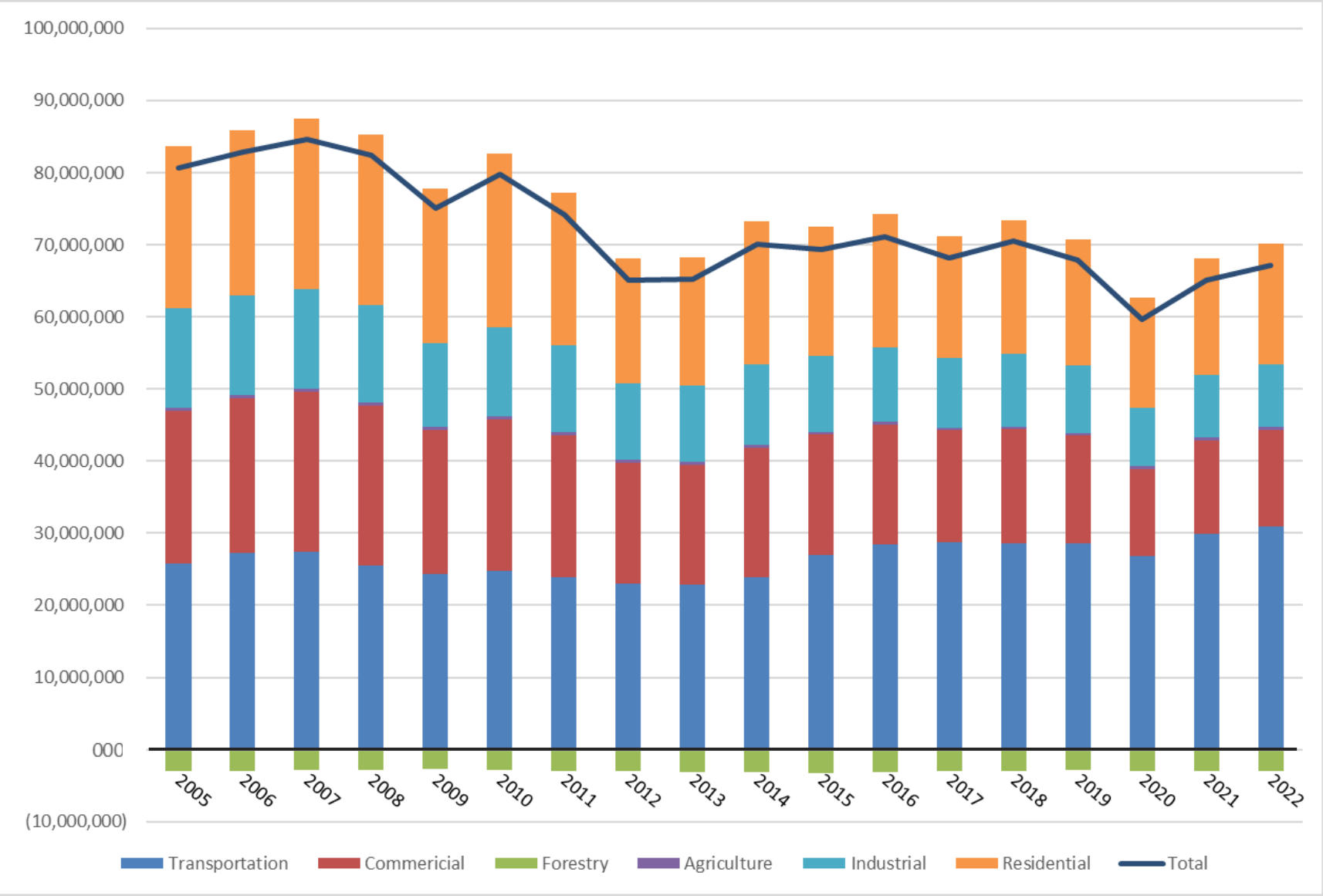
**A competitive economy** that is inclusive, innovative, and resilient.

# Greenhouse Gas Emissions Performance Measure

# MPO Reporting Requirements

- New USDOT performance rule on managing the National Highway System
- Establish declining 4-year target for metropolitan planning organization GHG emissions
- MPO Targets are due 180 days after State DOT targets
  - (September/October 2024)
- ARC must also set a joint target with the adjacent MPOs, Cartersville-Bartow and Gainesville-Hall as we overlap the Atlanta UZA
  - Coordination has already begun

# Historical Emissions Tracking



Data reflects the 20 counties fully or partly within the MPO boundaries

Transportation GHG represents an average of 45% of MPO emissions in 2022.

Source:  
[Drawdown Georgia](#)

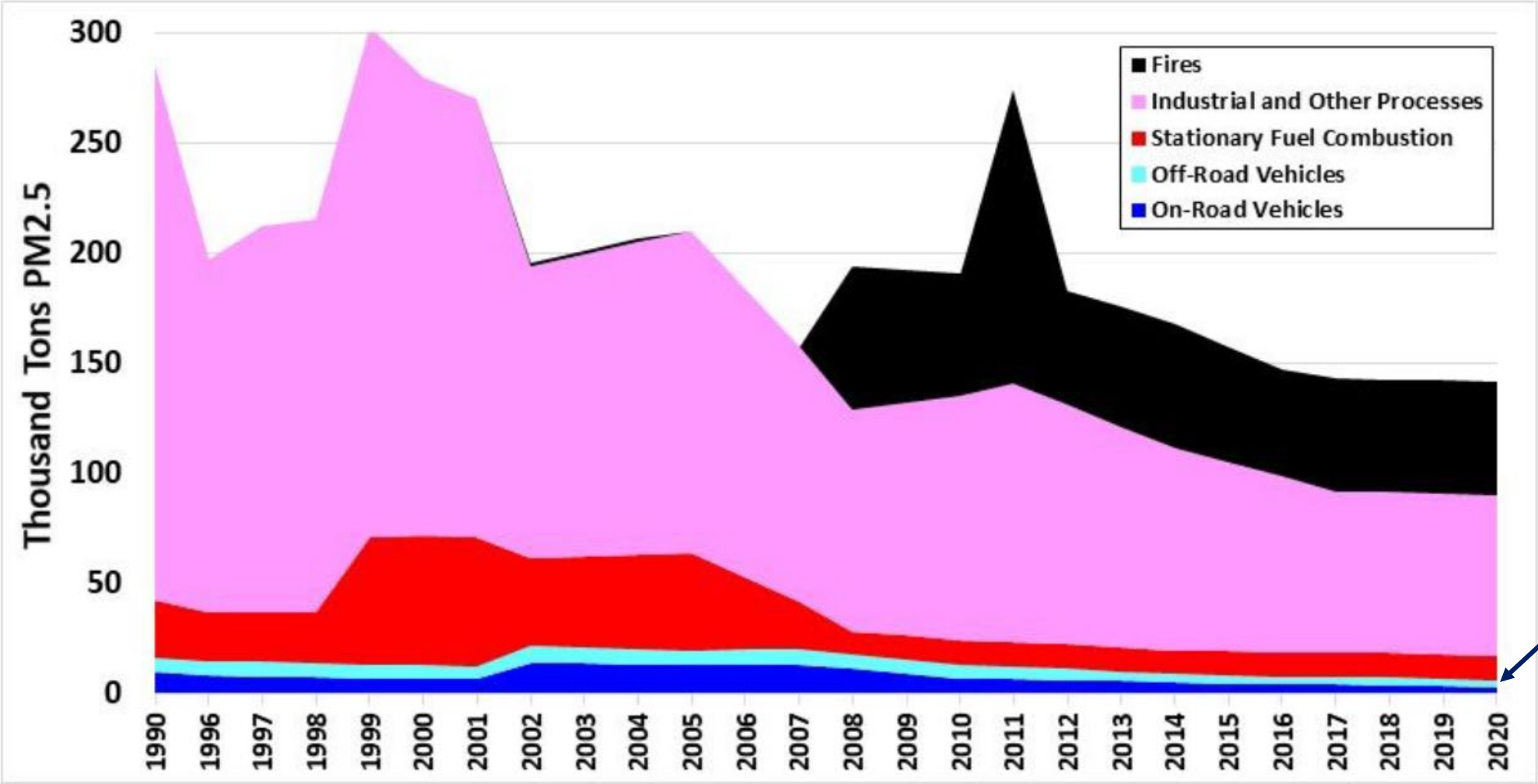
# Updated PM2.5 Standard

# Standard Update and Context

EPA is revising the level of the primary annual PM<sub>2.5</sub> standard to **9.0  $\mu\text{g}/\text{m}^3$**  from **12.0  $\mu\text{g}/\text{m}^3$**  to meet the Clean Air Act requirement that primary standards be “requisite to protect public health with an adequate margin of safety,” including the health of at-risk populations

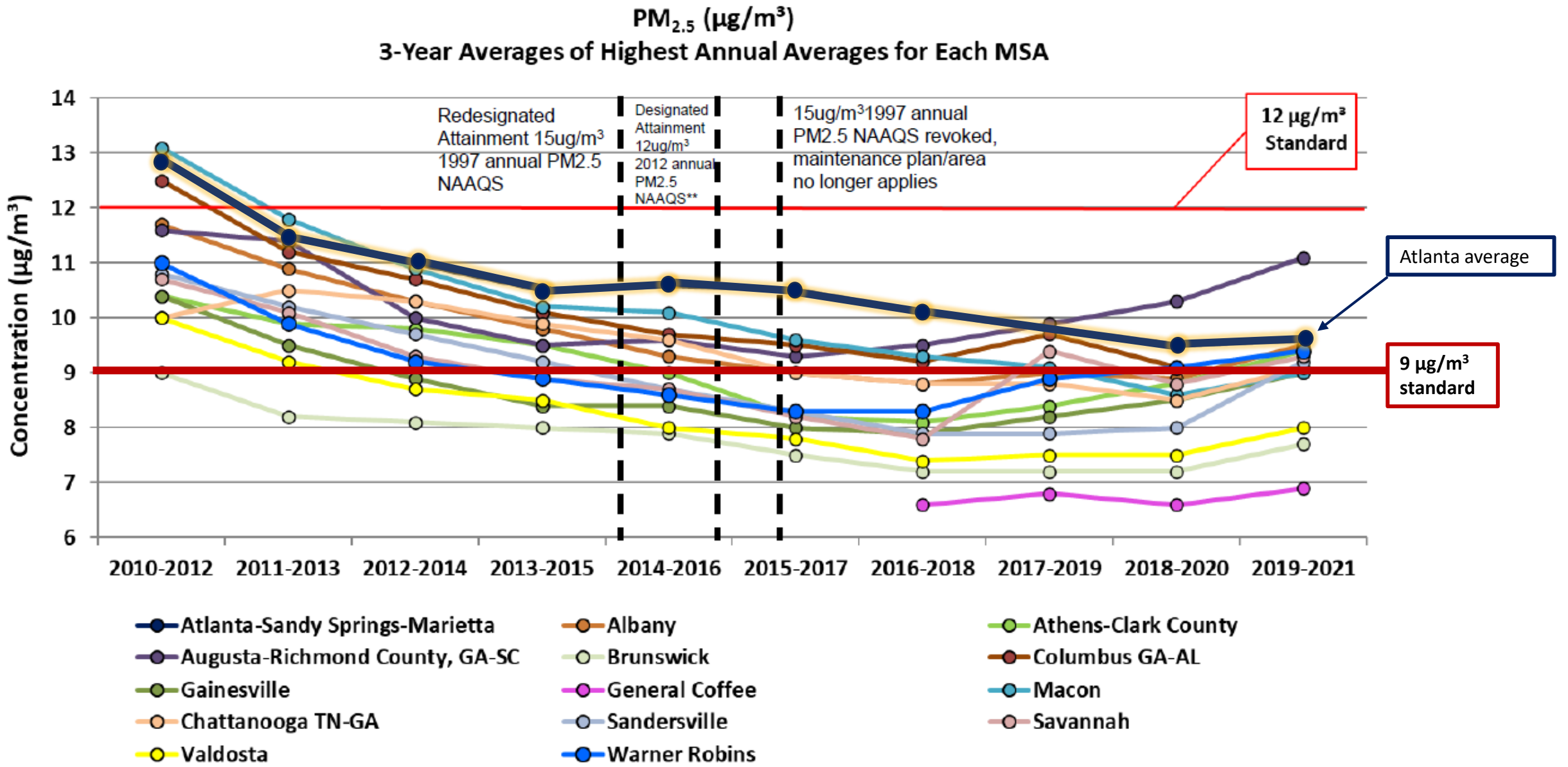


# Statewide PM2.5 Sources

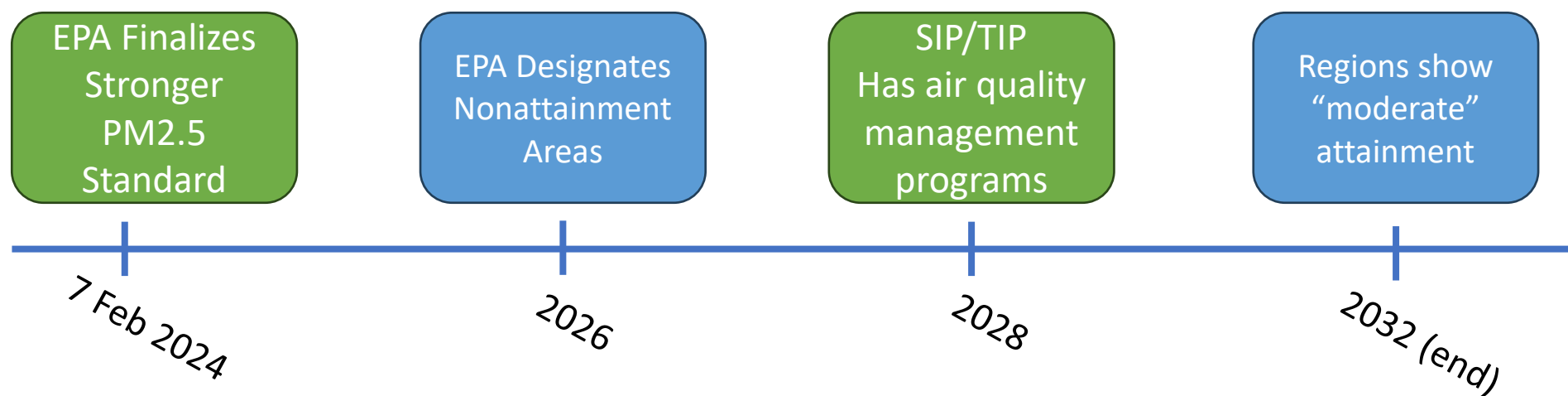


Transportation-related



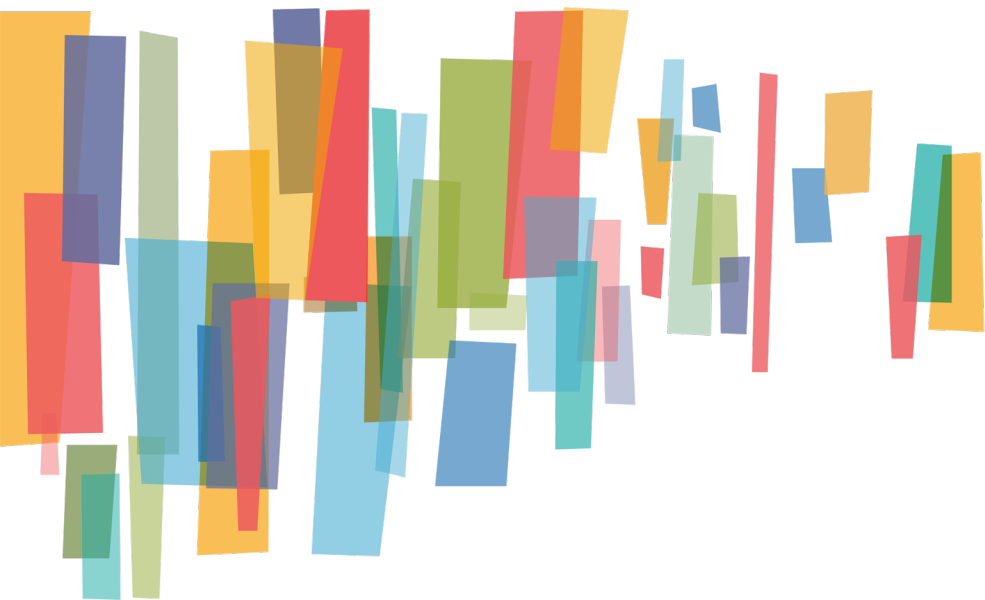


# Timeline



# Potential Impacts

- Atlanta area counties may be in *nonattainment*
  - Would require new plans to achieve the stricter standard
- Updates to modelling techniques to ensure latest emissions calculation
- Potential impact to approved transportation projects
- If achieved: Cleaner air, greater livability, longer lifespans, lower asthma and healthcare costs



# Questions?