

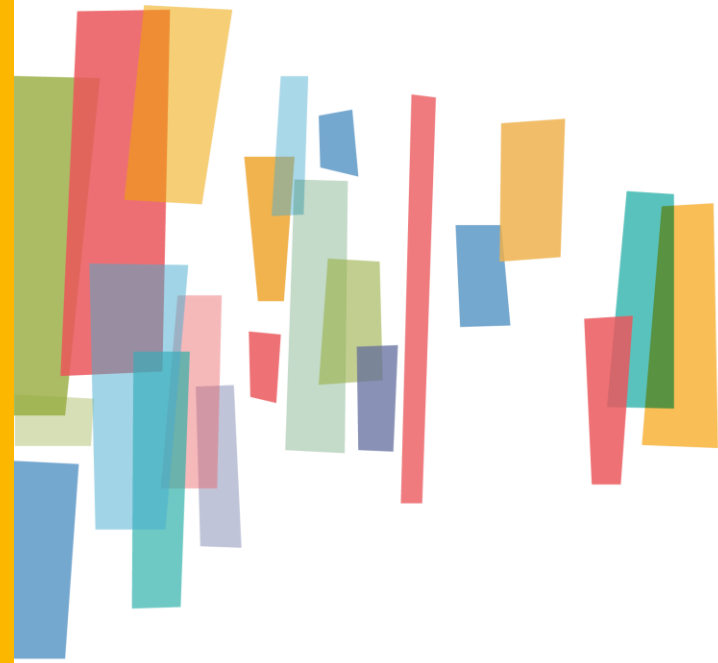
Live Beyond Expectations 2020-25: Update

Becky A. Kurtz

Senior Managing Director, Aging & Independence Services

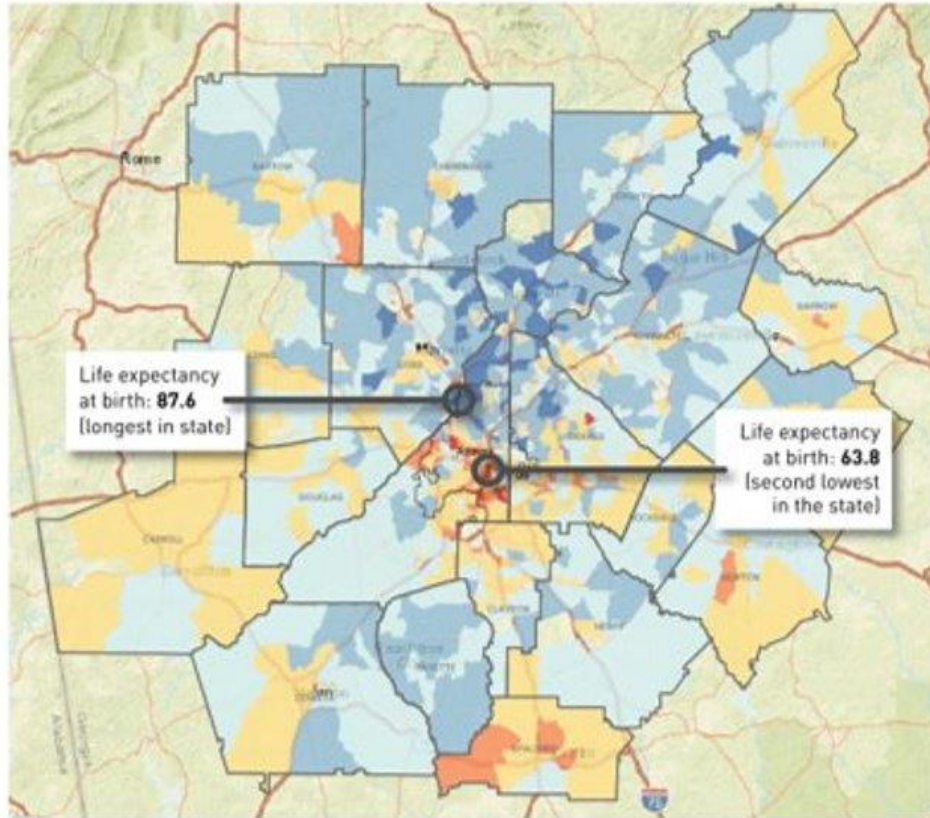
ARC Board Meeting

October 11, 2023



ONE
great
REGION

Live Beyond Expectations 2020-25 Background



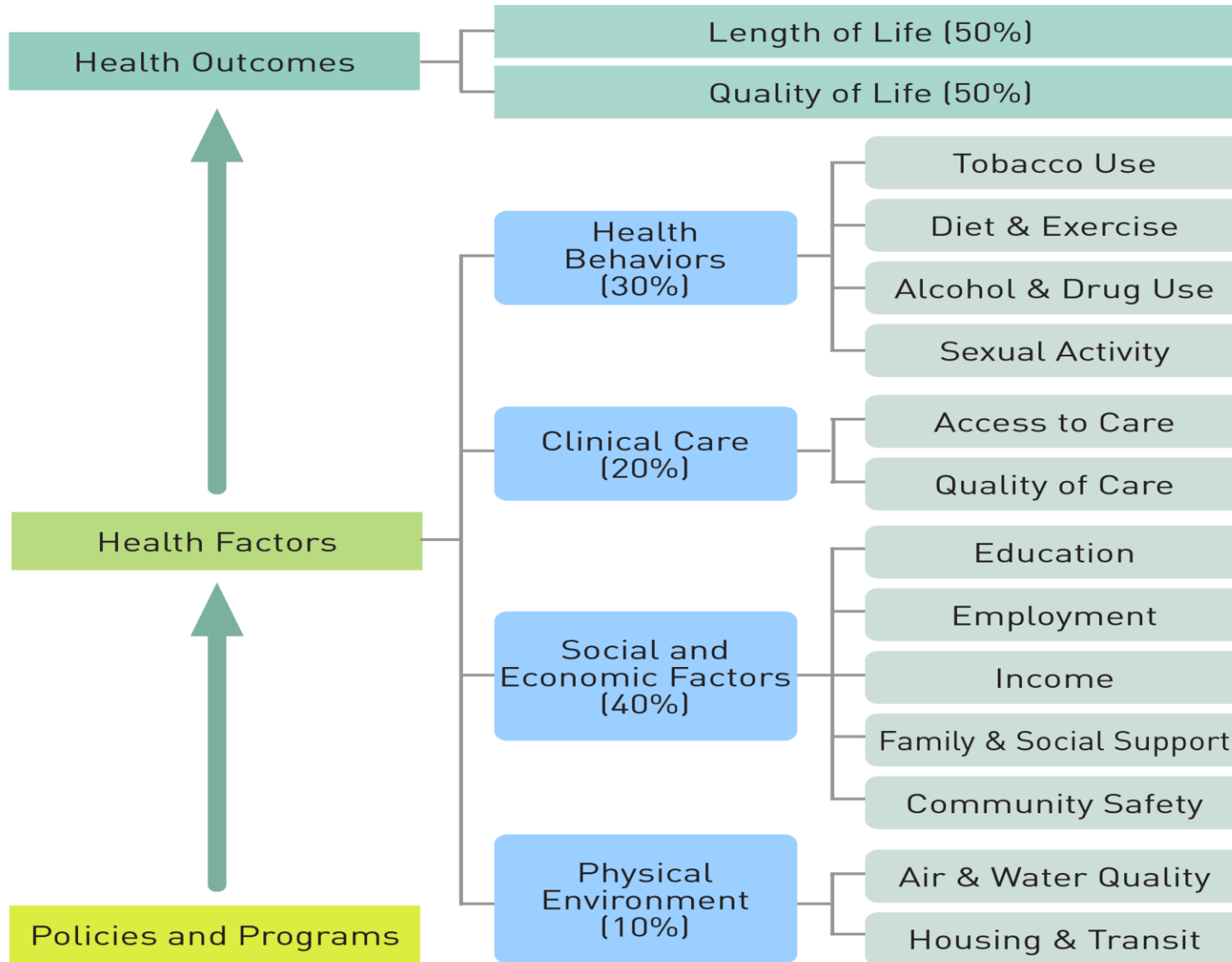
Source: U.S. Small-area Life Expectancy Estimates Project, 2010-2015

- Adopted by ARC Board September 2020
- *To:* “... implement a strategic framework, designed to identify and address inequities that create disparities in life expectancy.”



Life Expectancy
is about more ... than
Life Choices

<https://atlantaregional.org/aging-health/aging-health-planning/live-beyond-expectations-strategic-plan-2020-2025/>



County Health Rankings model © 2014 UWPHI

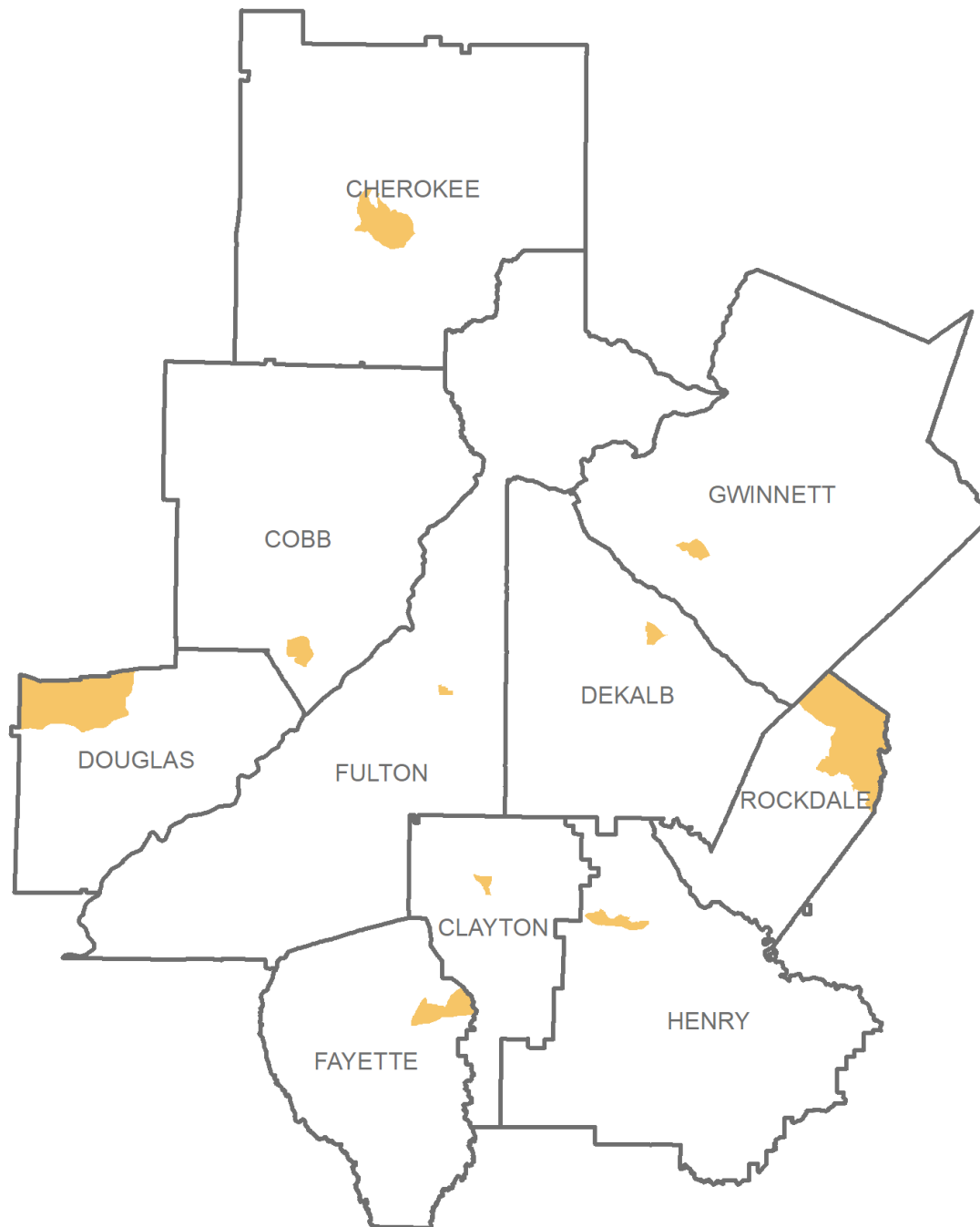
Goal:



Healthy, safe, livable communities in the Atlanta Metro area.

- Long-term objective:
 - ▶ Reduce disparities in life expectancy within the region
- Strategy:
 - ▶ Engage residents in communities with lowest life expectancy
 - ▶ Mobilize resources to support these communities





ARC Staff Process:

- Place-Based Engagement
- 10 communities
 - lowest life expectancy census tracts in 10 counties

Community Engagement Process

Focus Groups



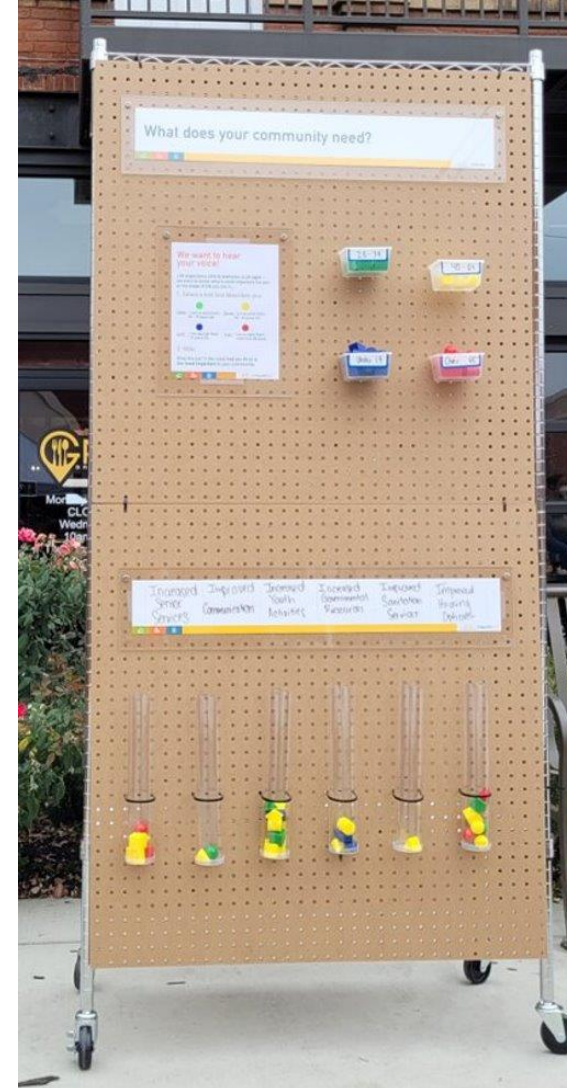
Elected Officials
Webinars



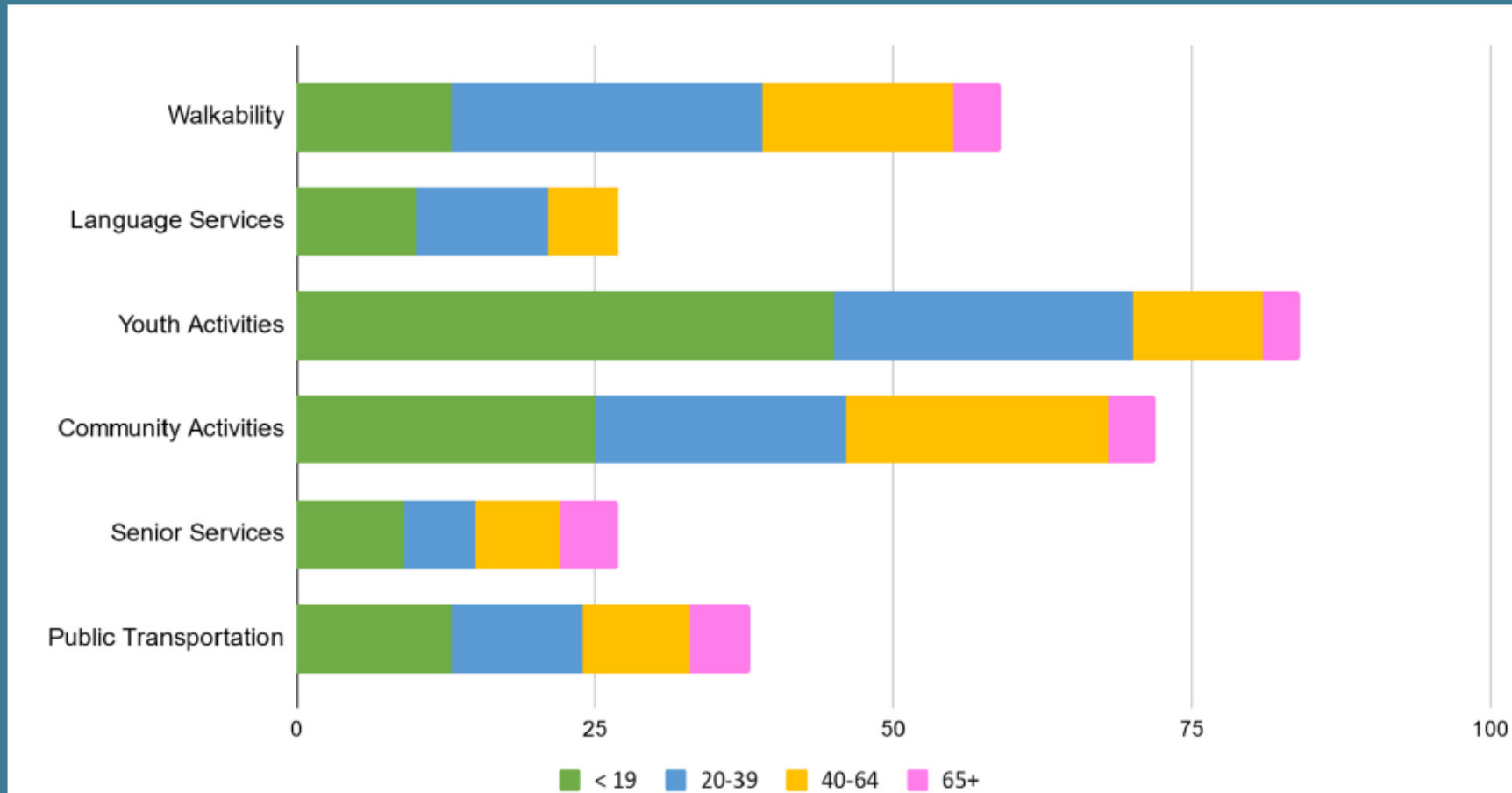
Community
Prioritization



Stakeholder Listening
Sessions



Cobb County



Top Concerns Across the Region

Affordable Housing

- Lower rents
- More types of housing (e.g., accessory dwelling units)
- Assistance for those on fixed incomes
- Pathways to homeownership
- Home repair assistance

Transportation

- Increased public transportation
- Local transit options
- Road maintenance
- Increasing walkability

Community activities

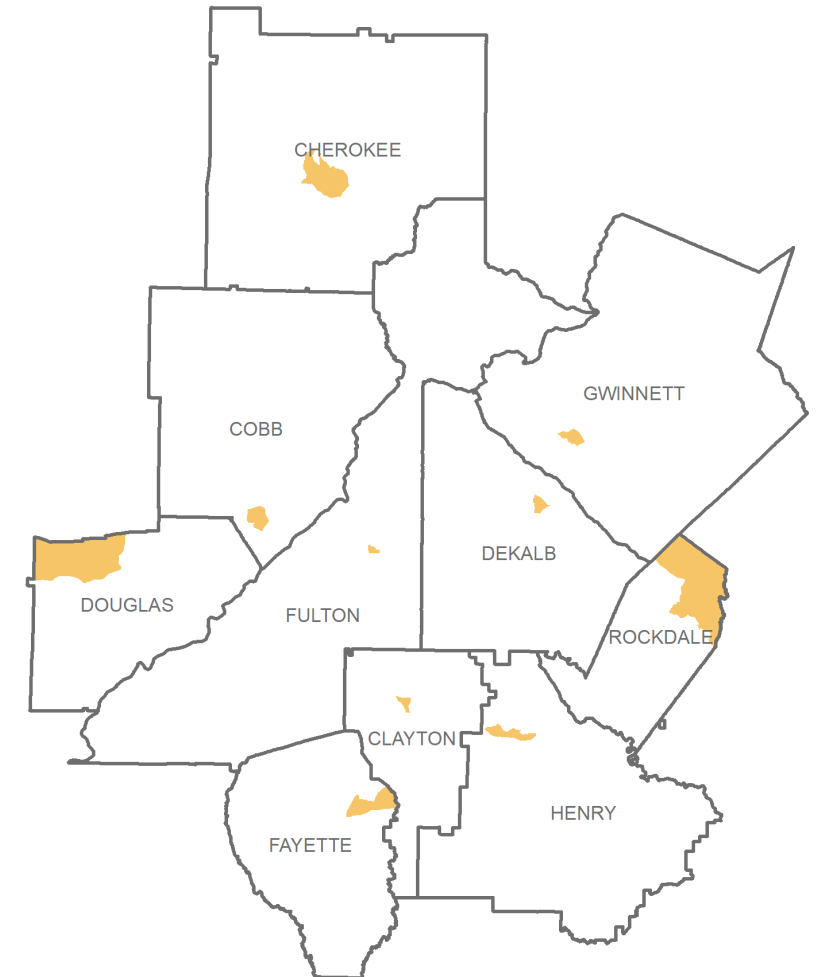
- Activities for youth
- Activities for older persons
- Arts & culture events
- Public gathering spaces

What did ARC learn in your community?

County-specific information at:

 [Atlanta Regional.org - Live Beyond Expectations](https://atlantaregional.org)

 QR code in handouts



Where do we go from here?

▮ Next steps: Mobilize resources to support these communities

▮ A&IS:

- Service and policy options within Aging & Independence Services purview

▮ ARC-wide:

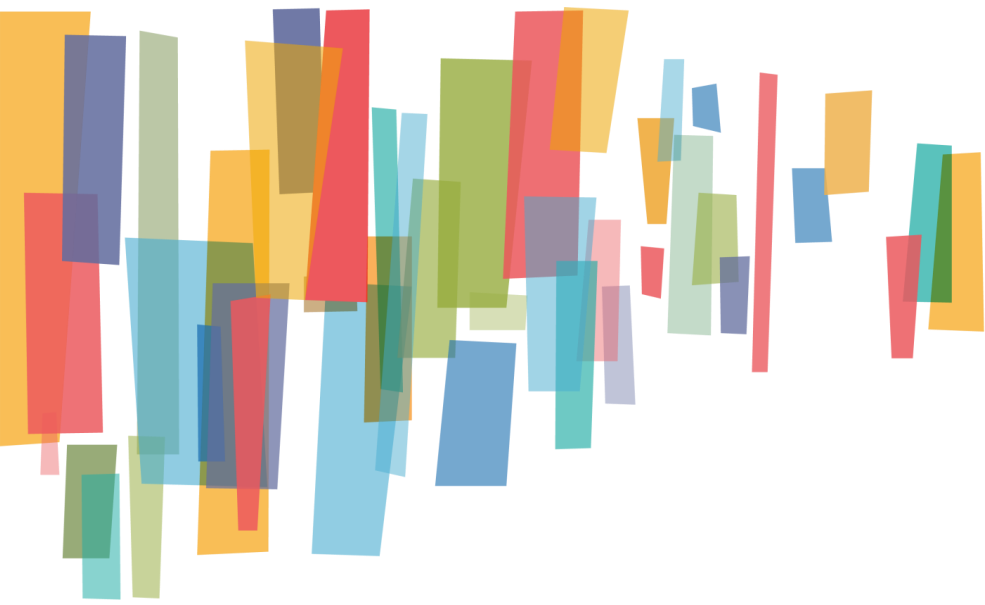
- Share learnings across ARC departments
- Integrate into other relevant ARC planning activities, as appropriate

▮ Partners:

- Explore next steps with Steering Committee and other partners

▮ ARC Board:

- Your insights are welcome!
- Can ARC use this work to support your efforts in these communities?



ONE
great
REGION

Questions?

For more info: www.atlantaregional.org/lbe-2020-2025