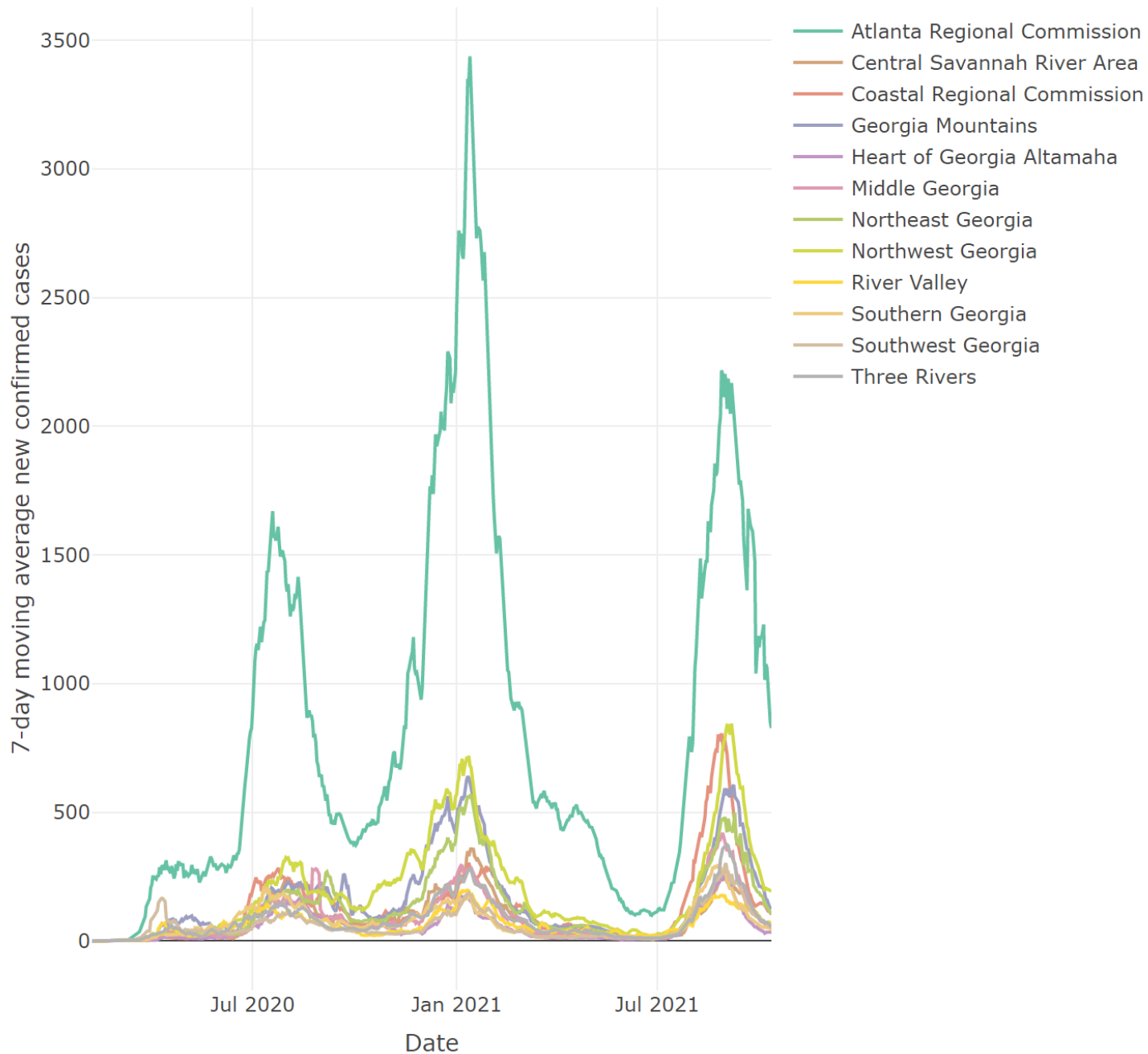


TAQC Update on Transportation Usage Statistics

John Orr
Atlanta Regional Commission

October 13, 2021





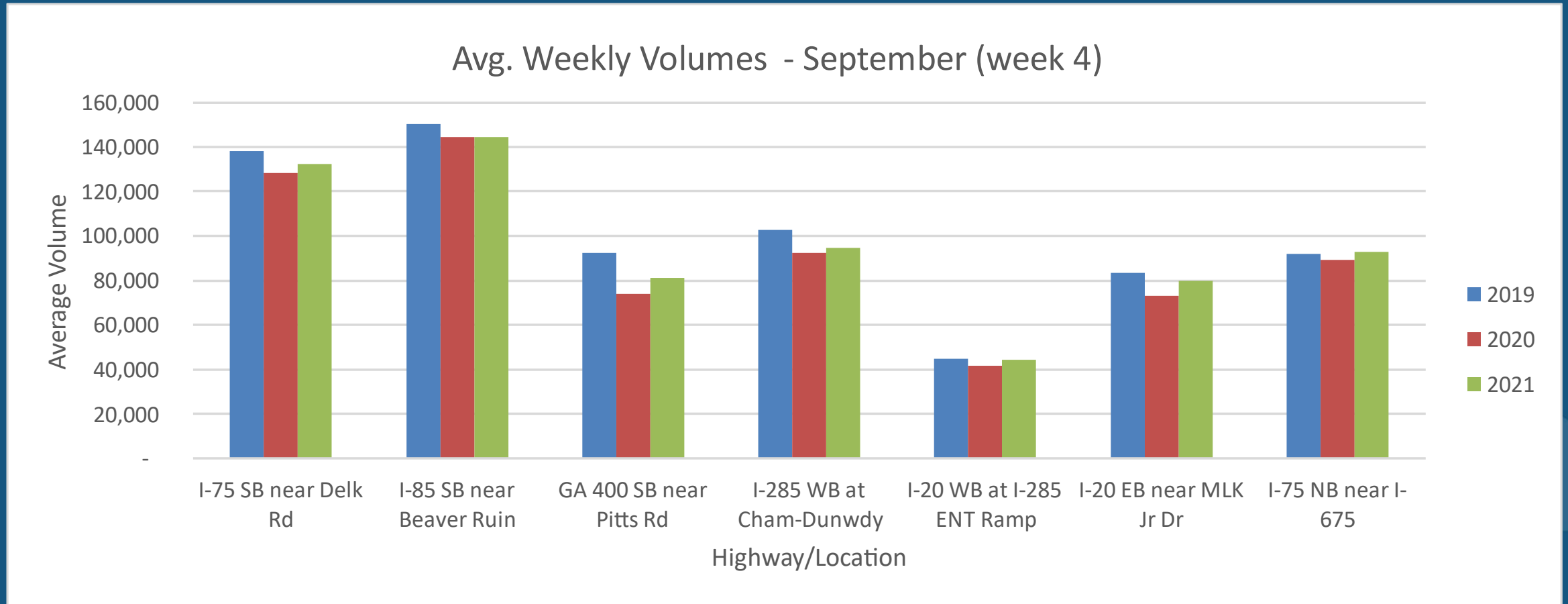
COVID Case Trends
Impact Travel: Latest
7-day Moving
Average is 827 New
Cases Per Day

Source: State of Georgia, ARC

Key Points

- In July, employment levels for the region (MSA) returned to pre-pandemic levels.
- In early August, schools reopened to in-person learning.
- Data is emerging from the month of September that should provide a snapshot of the impacts of changes in travel behavior for the coming months.

Interstate Daily Traffic Volumes Range from 5-10% Below Pre-Pandemic Levels – Depending on the Week

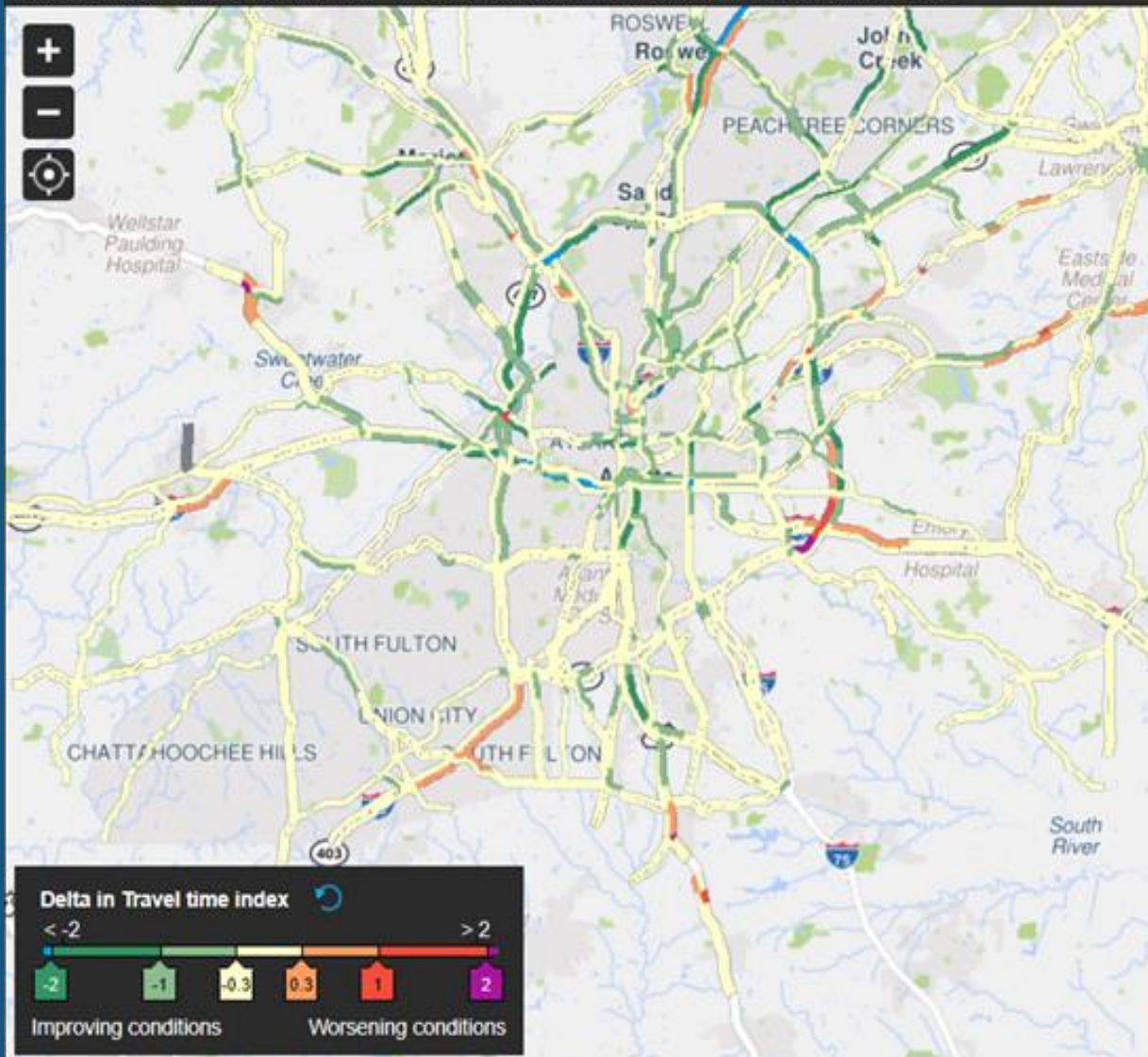


Source: GDOT

Temporal Comparison Maps - Using HERE data

Display: Travel time index
Compare: Date
Maps: 1 of 3 selected
Selected Time Range: AM Peak (6AM - 10AM)

Delta: September 30, 2019 through October 04, 2019 vs September 27, 2021 through October 01, 2021



Congestion During the Morning Peak Travel Period is Still Below Pre-Pandemic Levels for Most Corridors

Source: GDOT

MARTA Ridership is Slowly Increasing, but Still Below Pre-Pandemic Levels

- Rail ridership is down 55%
- Bus ridership is down 40-45%



Thank you

John Orr

jorr@atlantaregional.org

