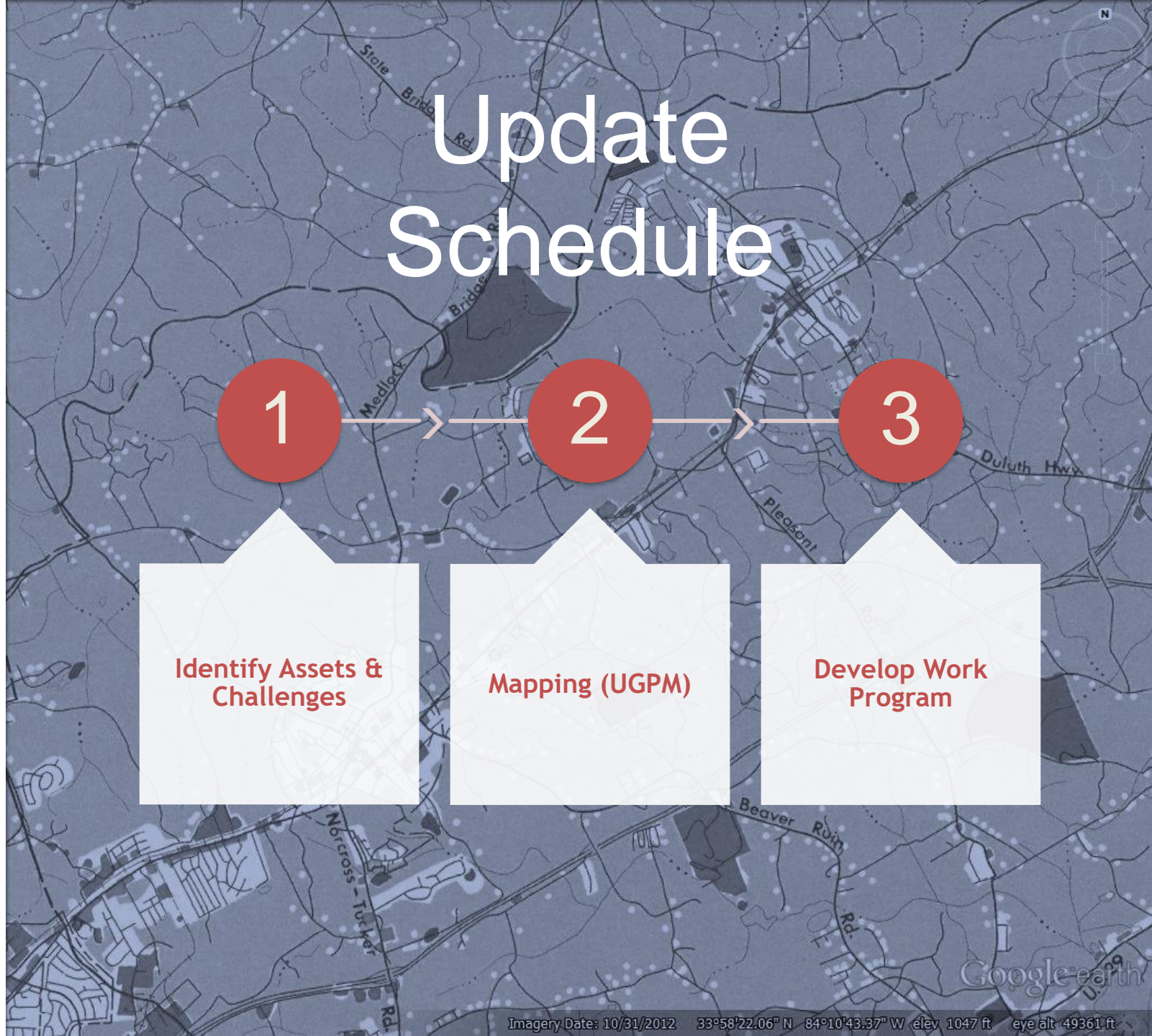


Regional Development Plan Component Update

Jared Lombard
October 23rd, 2020

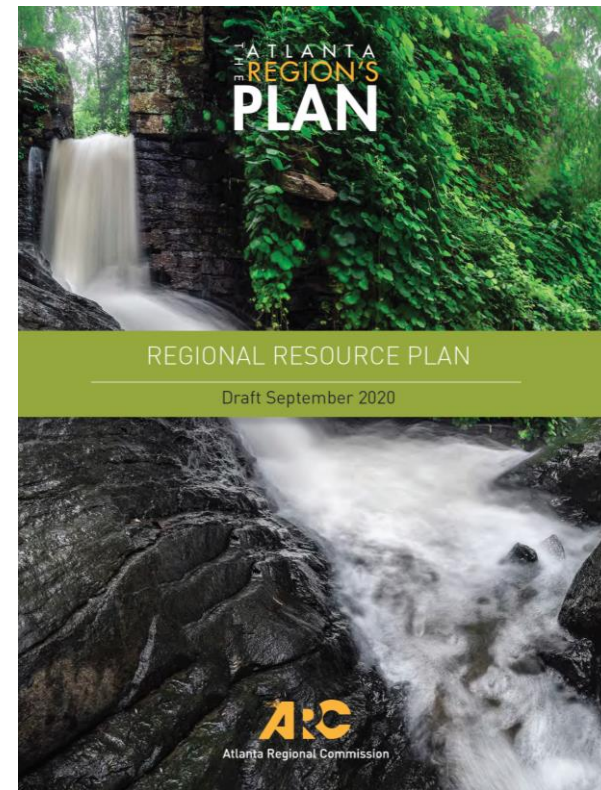
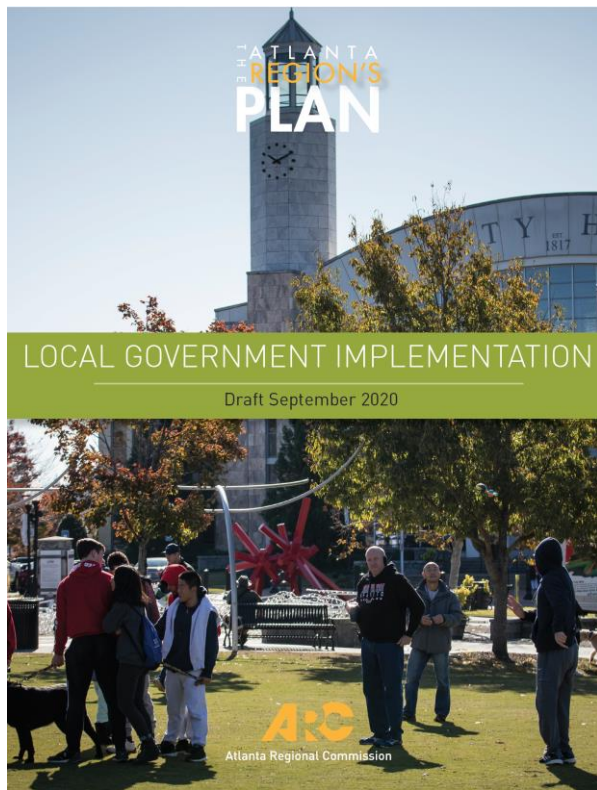
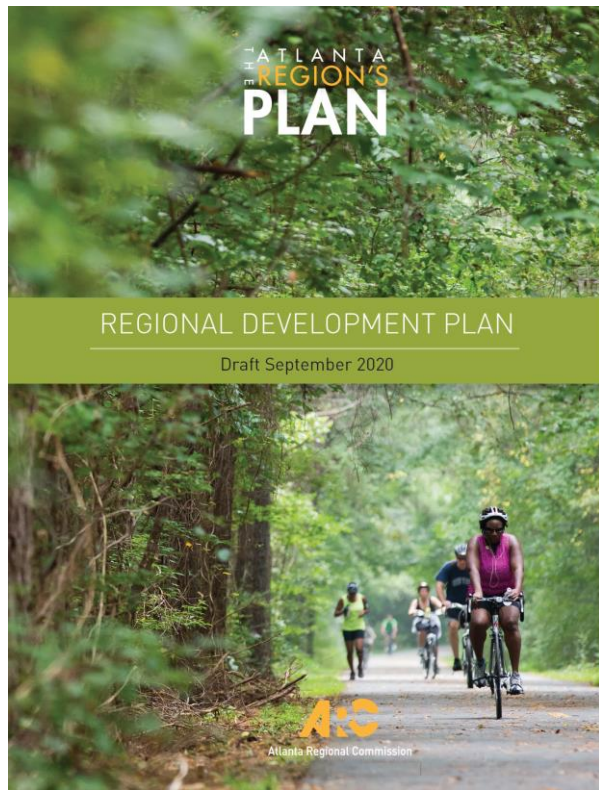
THE ATLANTA
REGION'S
PLAN



Purpose of the Regional Development Plan

- Describes the growth vision of the region
- Provides policy guidance for ARC programs and programming
- Provides input into the Regional Forecast
- Provides recommendations to local governments about future growth





Regional Development Plan Documents

Assets and Challenges



- Sustained investment in infrastructure, workforce, and quality of life will be critical to ensuring the region's economic status as a global business hub.



- To ensure the region's economic success, everyone must be prepared to advance in a productive career.



- Increased conservation efforts, use of new technology, and public awareness will continue to be critical tools to manage the region's limited water resources



- Housing affordability is eroding across metro Atlanta and will impact our economic competitiveness if left unaddressed.



- The region has strong but geographically limited transit options. With the creation of a regional transit authority, significant coordination and prioritization will be required to expand transit services.



- Funding to for transportation has increased in recent years but the need for transportation investments continues.

Assets and Challenges



- As the climate patterns become increasingly unpredictable, metro Atlanta communities will have to overcome more frequent environmental shocks and stressors by using adaptation and mitigation strategies.



- Inequities in income and race continue to be a barrier to success for residents across the region.



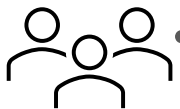
- Hartsfield-Jackson International Airport is the largest economic asset in the region and its continued success will require regional coordination of land use, transportation, and economic development in the surrounding communities.



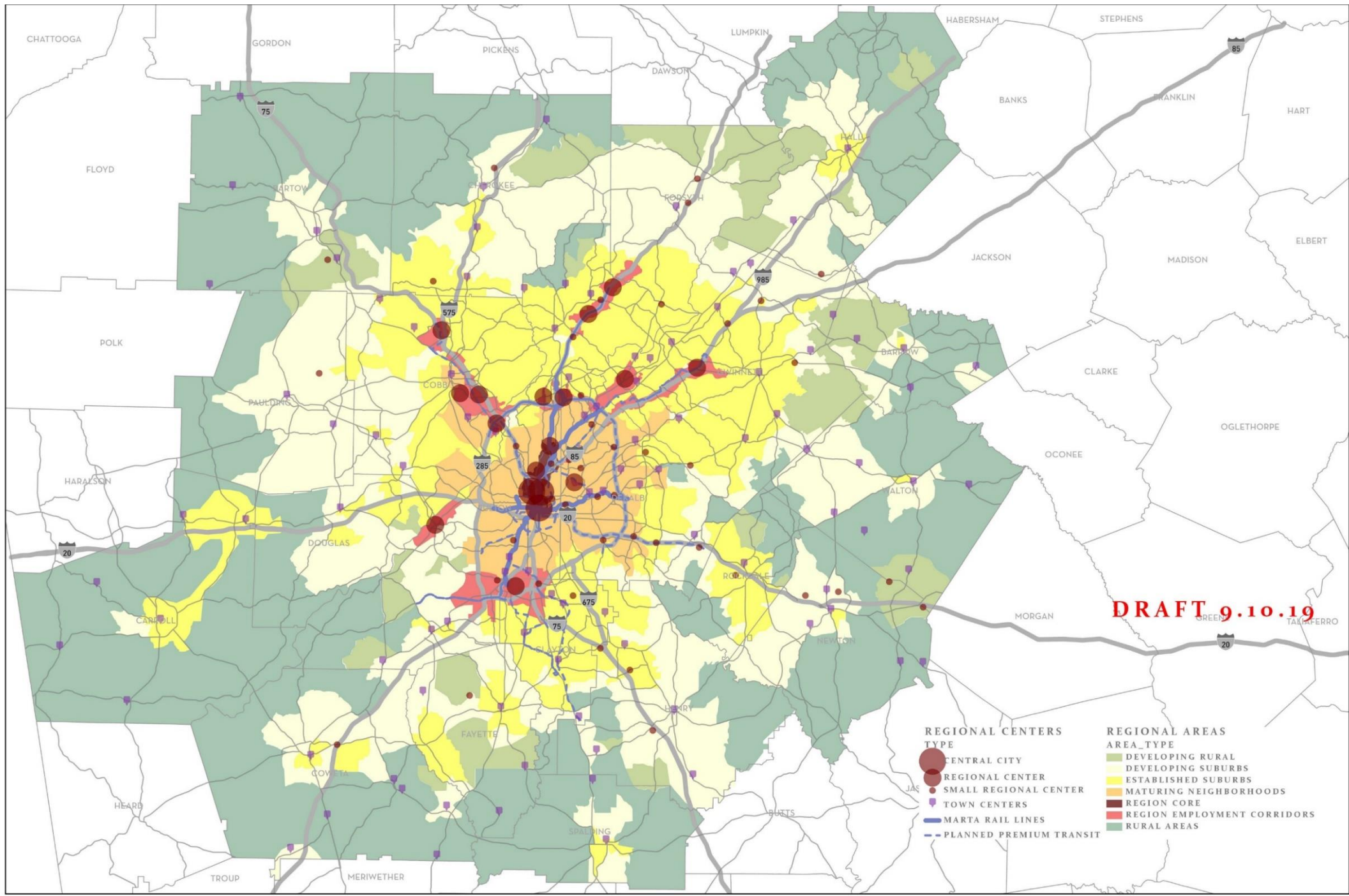
- By 2050, 20% of the region's population will be over the age of 65, which will demand changes in the provision of services and the design of communities.



- To build stronger regional and local identity, communities should continue to enhance their physical and social character through creative placemaking initiatives



- By 2050, the composition of the region's 8 million residents will be markedly different in terms of age, race, and ethnicity.



DRAFT 9.10.19

Proposed 2021-2025 Work Program



LCI Work Program

- Continue the LCI program to 2050 with \$1.8 million per year in study funds
- Add \$100 million in transportation funds in LCI funds from 2040-2050.

DRAFT

Woodstock LCI



Woodstock LCI 4 Studies, \$1.2 Million Transportation Funds



Chamblee LCI



Chamblee LCI 6 Studies, \$1.6 Million Transportation Funds



ARC Aerotropolis Work Program

- Continue supporting the Aerotropolis Atlanta and communities with Technical Assistance
- Partner on an updated Blueprint

DRAFT

Big Changes

Ft Mac-
Tyler
Perry
Studios

Pittsburgh
Yards

6
West

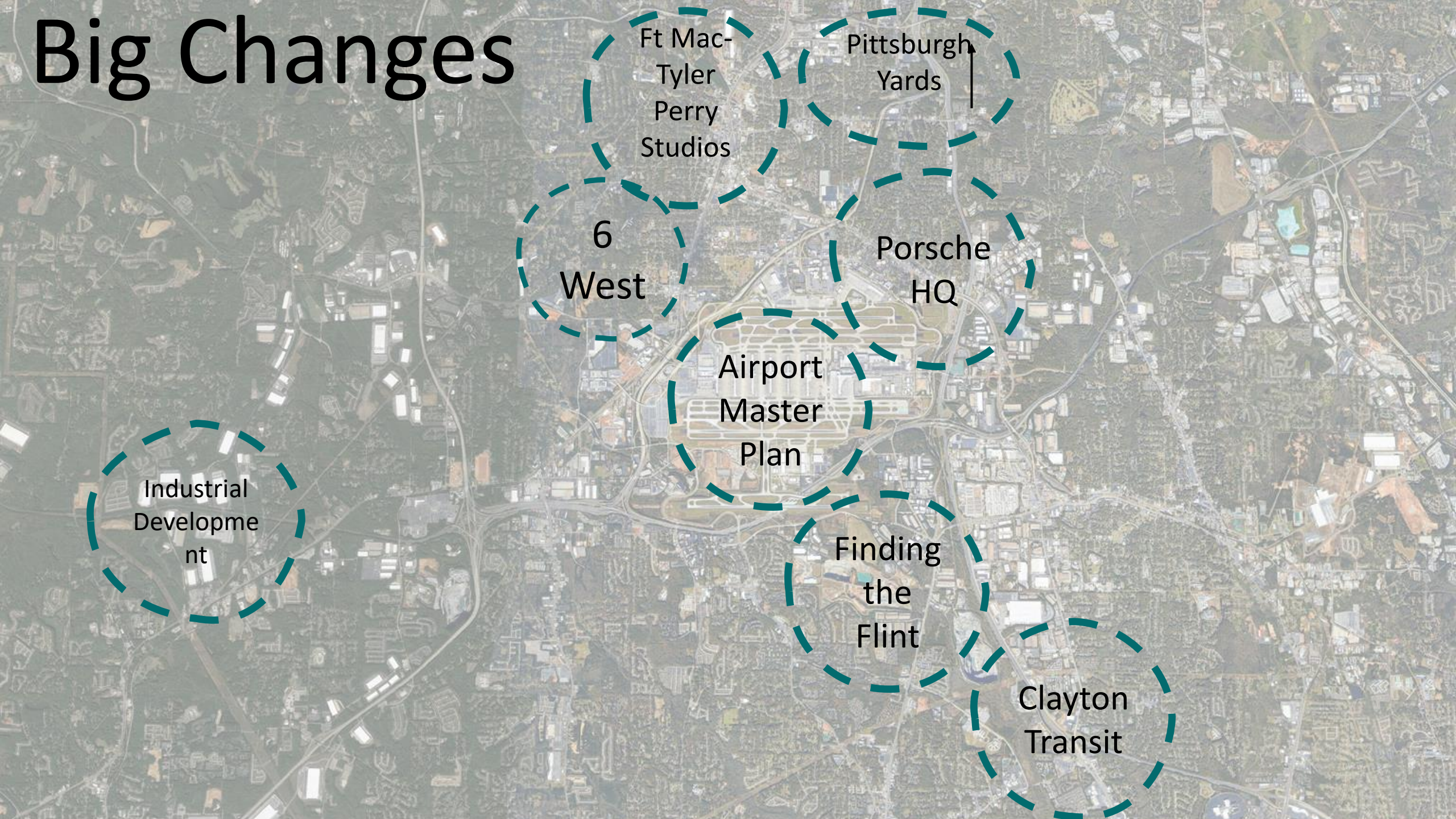
Porsche
HQ

Airport
Master
Plan

Industrial
Developme
nt

Finding
the
Flint

Clayton
Transit

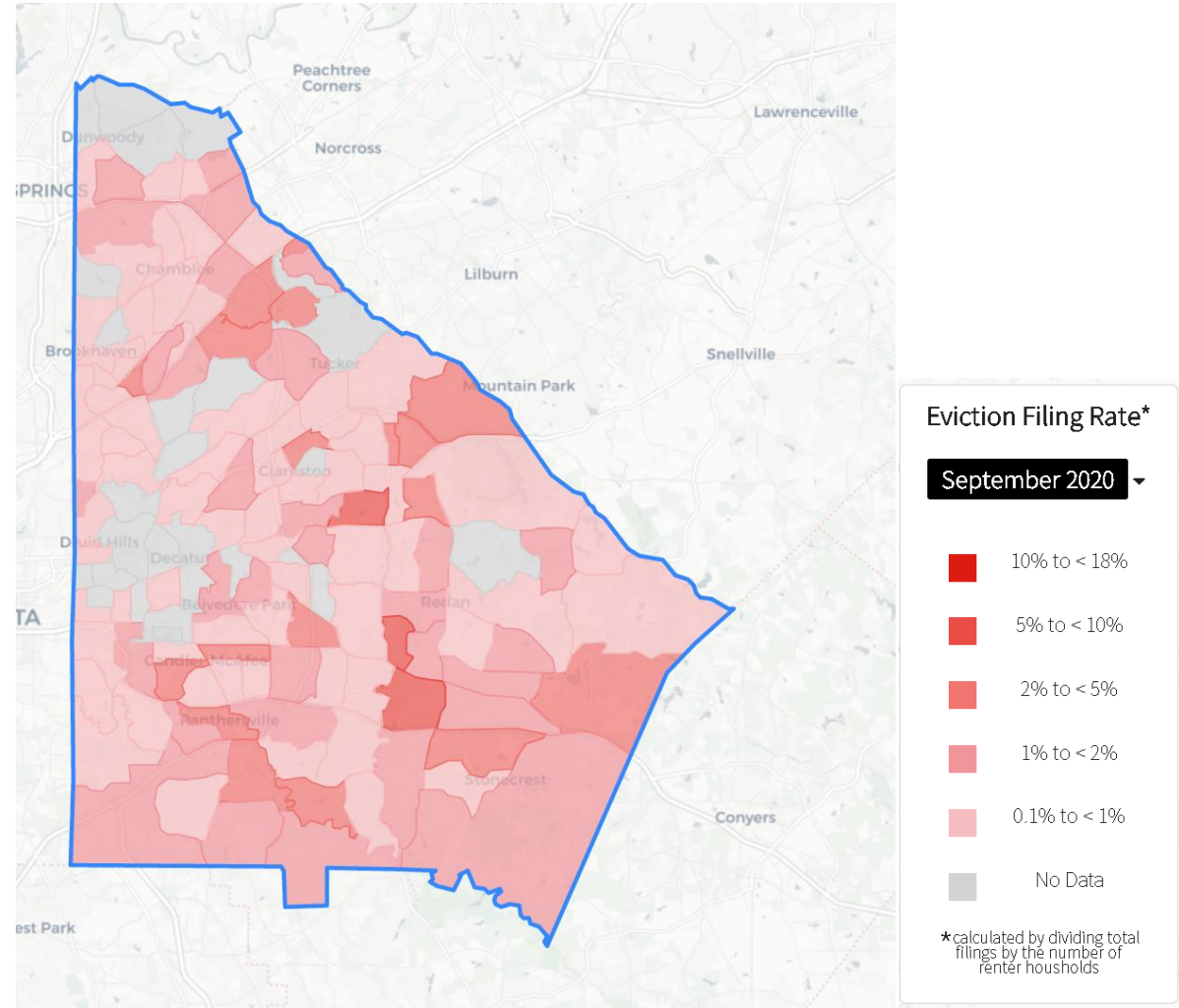
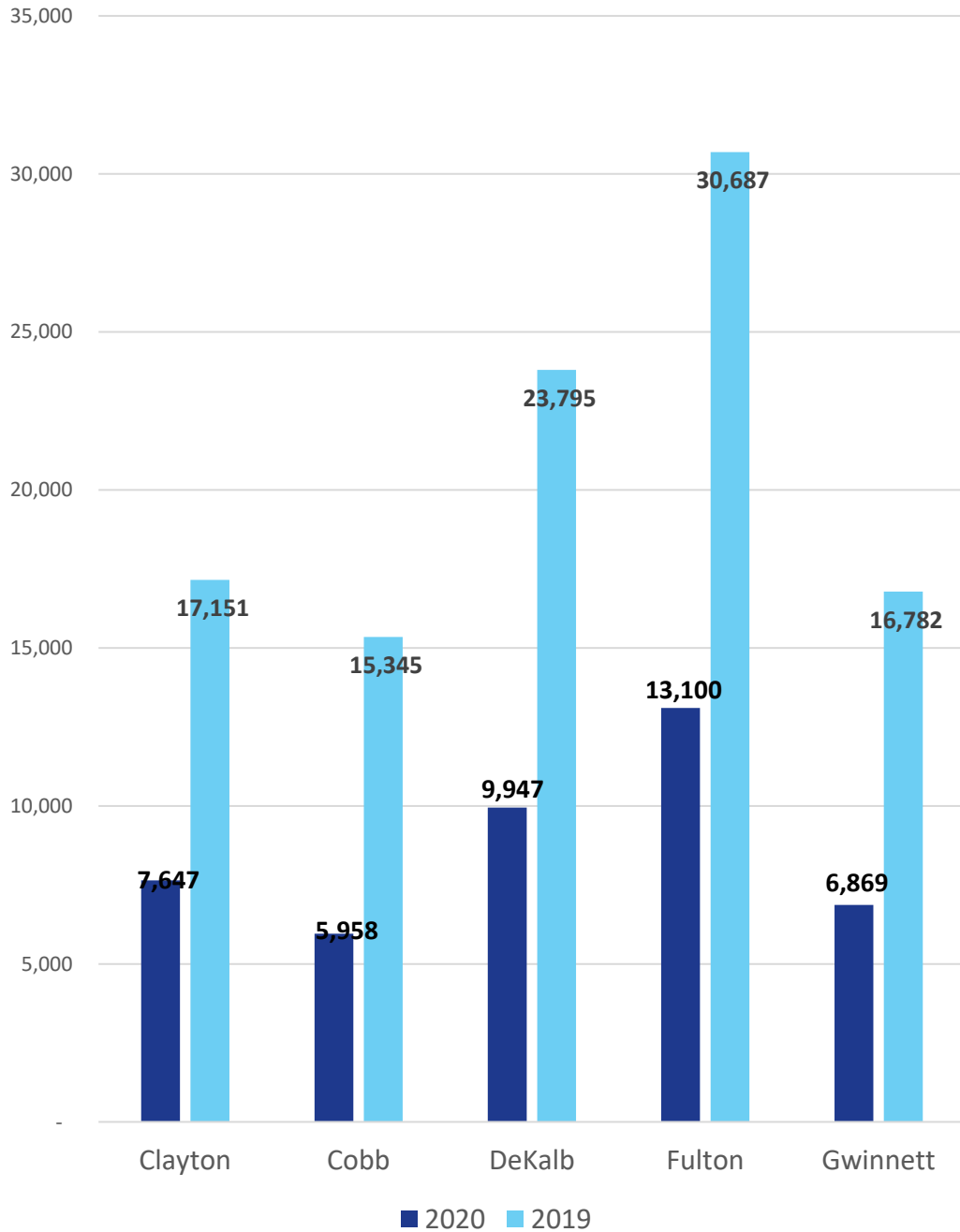


ARC Regional Housing Work Program

- Provide Technical Assistance to local governments on strategies
- Continue to update Online Tool

DRAFT

Eviction Filings Thru September



Creative Placemaking

- Develop a Transit Creative Placemaking Program
- Continue to examine ways to incorporate within other existing and new programs

DRAFT



Bringing it all Together

Housing



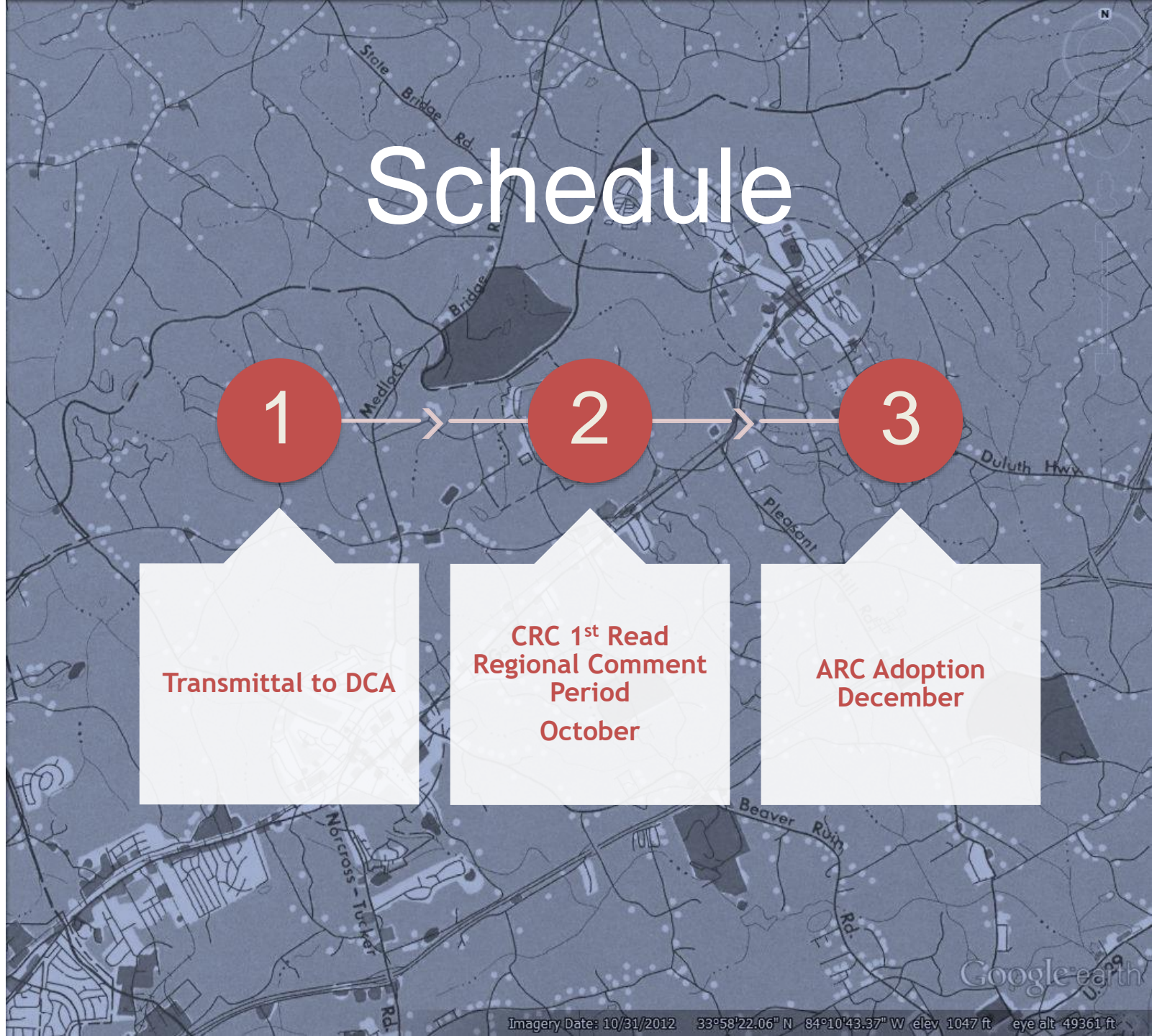
Creative
Placemakin
g

Proposed streetscape improvements and development along Capitol Avenue.
Artistic illustration of planning recommendations for the Turner Field Stadium Neighborhood Livable Centers Initiative.

PERKINS+WILL

Potential Transit

Potential Green Infrastructure



Questions or Comments

