

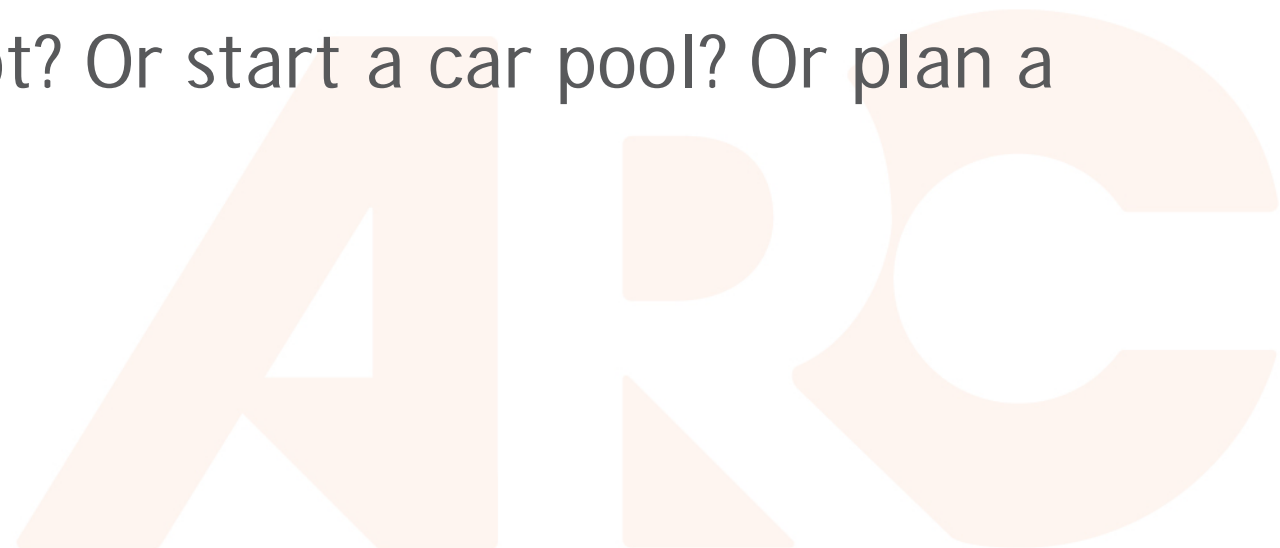
The Regional Transportation Community Engagement Plan

2019 Update



Ever wonder. . . ?

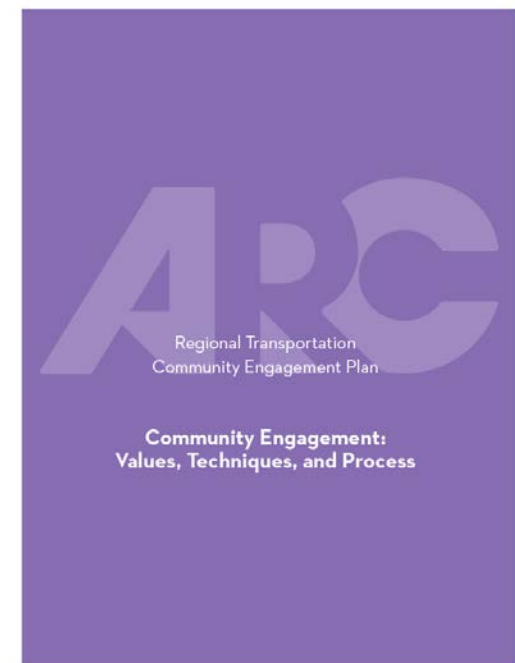
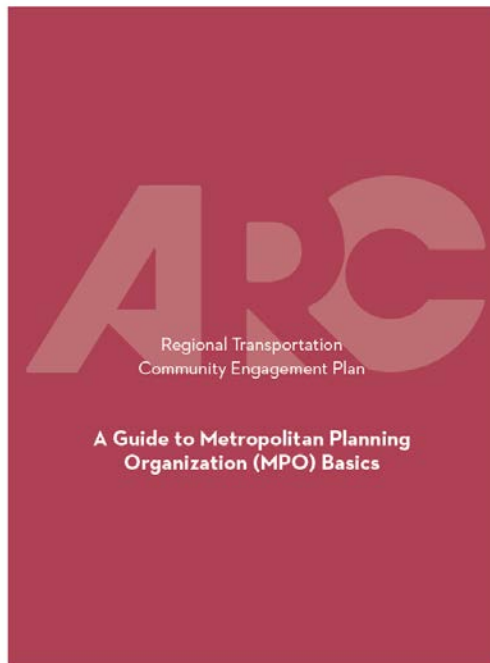
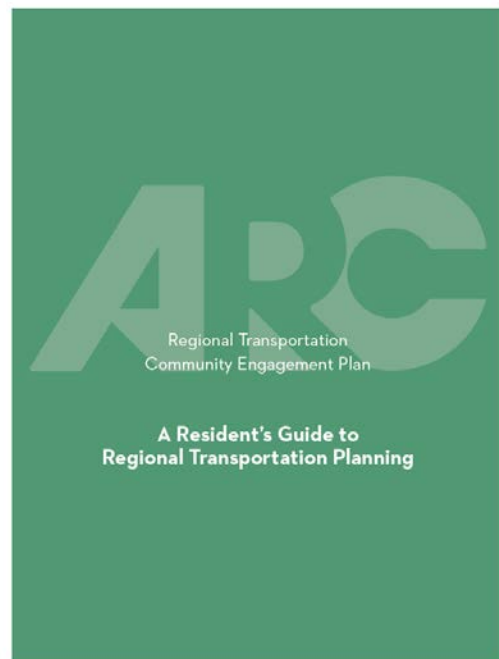
- What is the Atlanta Regional Commission?
- What is an MPO?
- What do all these acronyms stand for anyway?
- Who makes decisions about transportation projects?
- Where do I share my input? When?
- How do I find a park & ride lot? Or start a car pool? Or plan a bike trip?



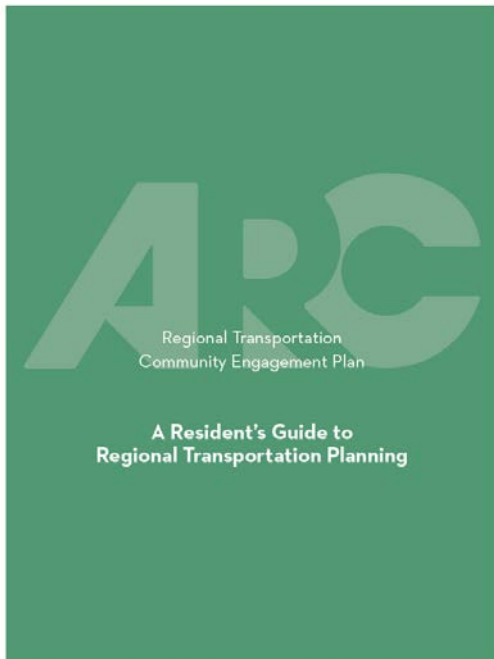
The Regional Transportation Community Engagement Plan

The official public participation plan (federally required) for ARC as the Atlanta MPO - open for public review through May 27th

Revised into three guide books - [available on ARC's website](#)



Resident's Guide to Regional Transportation Planning



Audience:

- General public
- Community groups
- Advocates
- Interested parties



TABLE OF CONTENTS

What is the Regional Transportation Plan? (pg. 2)

Who Makes the Decisions? (pg. 3)

What Happens After a Project is Built? (pg. 10)

Who Maintains What? (pg. 11)

How Do I ...? (Transportation FAQs) (pg. 12)

What is the Regional Transportation Plan?



The "long-range list" for the Atlanta region

A 20+year long-range plan updated every 4 years, at a minimum.

ARC prioritizes projects based on established regional goals and evaluation criteria



The short-range "to-do list" of construction projects

A 6-year plan that is "fiscally constrained" (funding is available!)

How Are Projects Funded?

Where Does the Money Come From?

FEDERAL

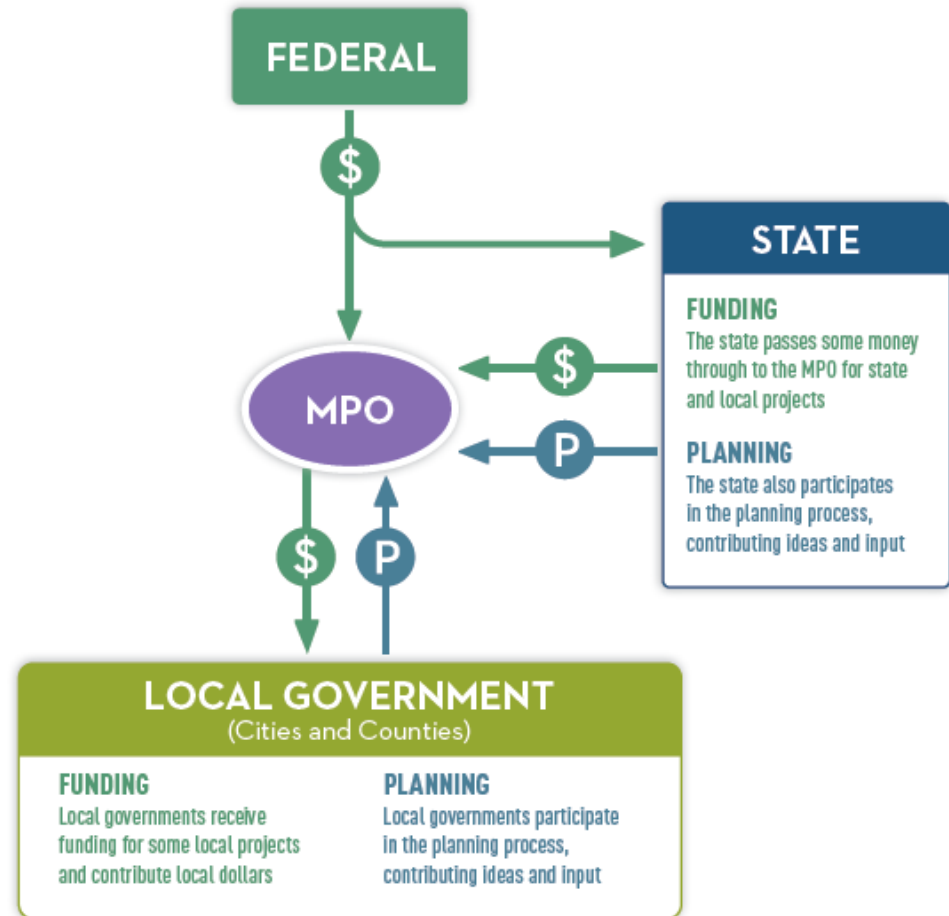
The Fixing America's Surface Transportation (FAST) Act of 2015 provides federal funding for highway and transit through 2020

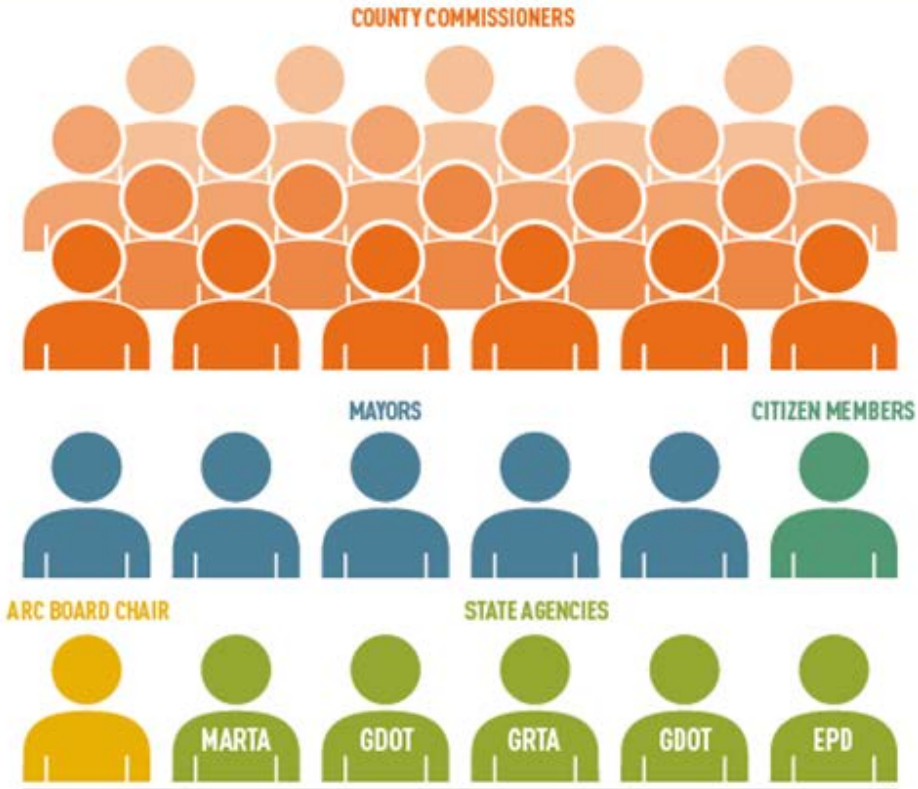
STATE

With the passage of the Transportation Funding Act (TFA) of 2015, state funding has increased by almost \$1B each year, effectively doubling the State's transportation budget

LOCAL

Many counties and cities in metro Atlanta host votes to raise additional funds for transit, road, biking, and walking projects





Graphic above is a general representation of membership and is not exact

MPO = Metropolitan Planning Organization

ARC = Atlanta's MPO

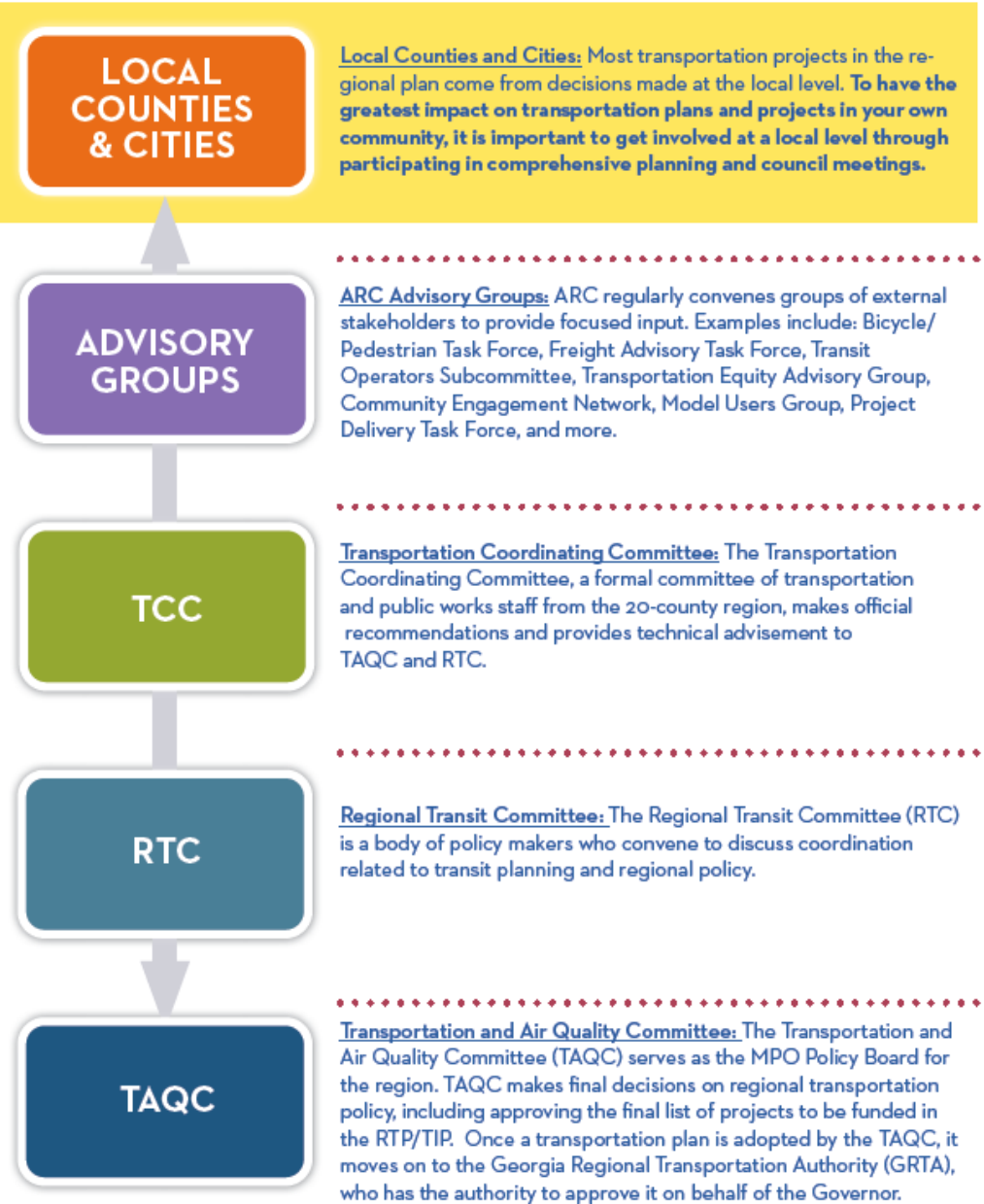


An **MPO** is designated in urban areas with 50,000+ people, to carry out the federally required metropolitan transportation planning process

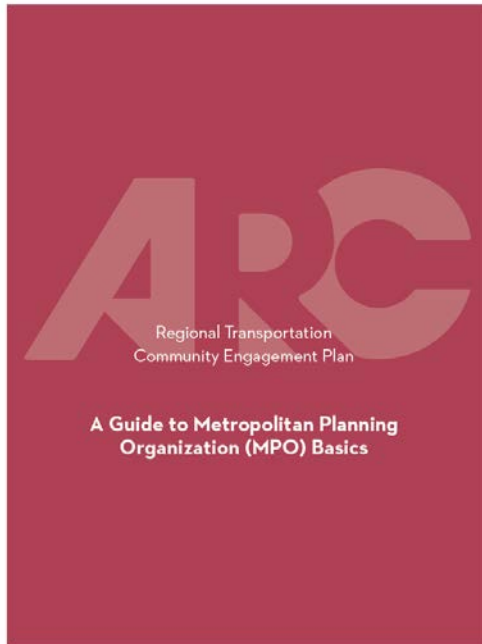
These are the folks who make the big decisions... but they get lots of help!



Who Makes the Decisions?



Guide to Metropolitan Planning Organization (MPO) Basics



Audience:

- Elected officials
- Community advocates
- Engaged residents
- Planners



TABLE OF CONTENTS

What is the Atlanta Regional Commission (pg. 1)

Public Health and Air Quality Standards (pg. 4)

ARC Committee Structure (pg. 5)

Planning Requirements (pg. 7)

Identify Transportation Projects (pg. 8)

Opportunities for Public Input (pg. 9)

What is a Metropolitan Planning Organization?

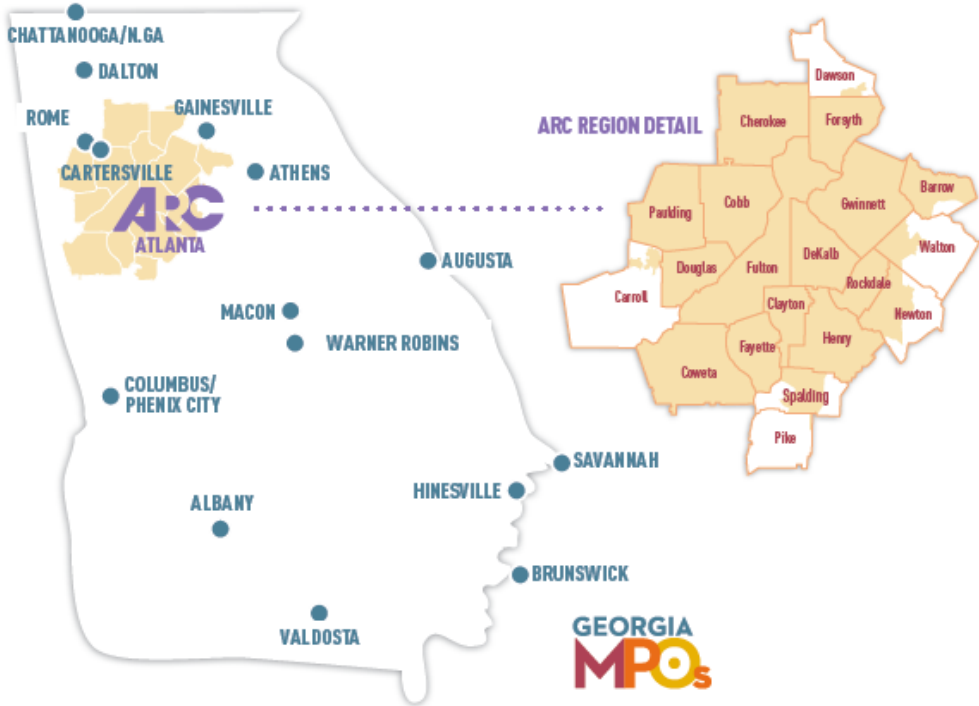
A Metropolitan Planning Organization, or MPO, is an organization designated by federal law to provide local officials and residents input into the planning and implementation of projects funded with federal transportation dollars for metropolitan areas with populations of greater than 50,000.

To receive federal aid, an urban area of this size must follow the federal metropolitan planning process outlined by the US Department of Transportation (USDOT). The MPO is responsible for carrying out this process. In the Atlanta metropolitan area, the Atlanta Regional Commission is the federally-designated MPO.

There are currently 16 MPOs in the state of Georgia. These are all areas with a population greater than 50,000, as defined by the U.S. Census.



It is the job of an MPO to develop a regional transportation vision, direct planning, allocate federal funds, and engage the public and other stakeholders in this process.

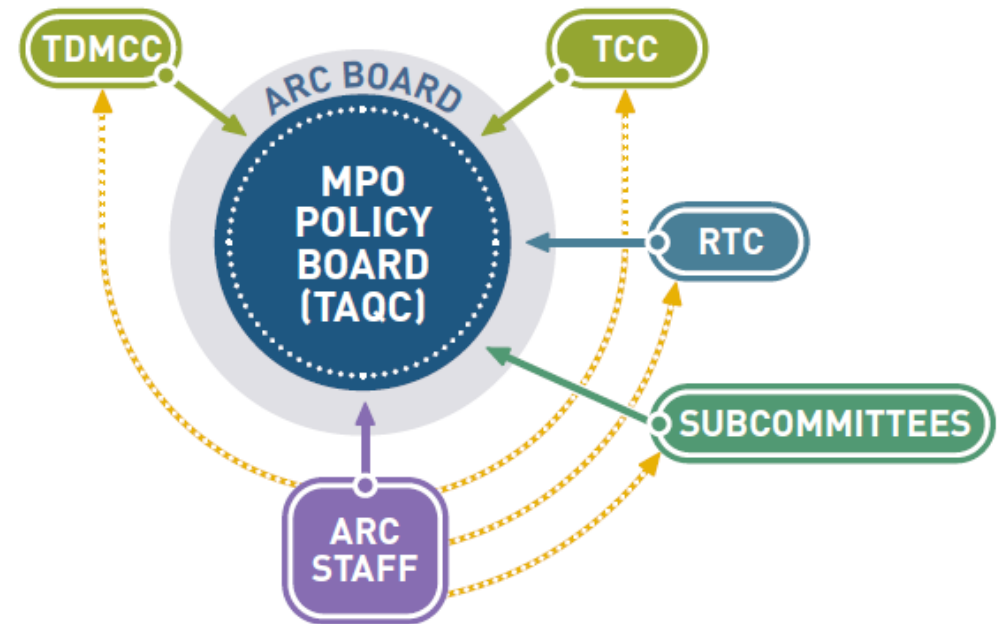


ARC Committee Structure (cont.)

There are technical committees known as the [Transportation Coordinating Committee \(TCC\)](#) and the [Transportation Demand Management Coordinating Committee \(TDMCC\)](#).

The Transportation Coordinating Committee includes staff from the organizations represented on TAQC. Primarily, the development of the regional transportation plan and associated technical analysis is conducted by planners and analysts on staff at ARC, through a highly collaborative process with local, state, and federal planning staff, elected officials, and other public participants. Recommendations from this ongoing, collaborative process are made to the Transportation Coordinating Committee who then advise up to the policy makers elected to serve on the Regional Transit Committee and Transportation and Air Quality Committee. Once a formal decision to approve, edit, or deny a plan or programmatic decision is made by TAQC, the process continues on to the ARC Board, and then to GRTA who takes action on the TIP/RTP on behalf of the Governor.

The TDM Coordinating Committee is comprised of TDM professionals and staff from government and employer partners. The primary goal is to convene the region on TDM-related issues and projects that serve to reduce congestion, better air quality and improve overall quality of life for the 20-county maintenance area, specifically the non-attainment areas. Focal areas include alternative transportation modes, transportation technology and innovation and best practice policies and standards that serve to reduce SOV drivers in the region.



The Atlanta Regional Commission (ARC)

The Atlanta Regional Commission (ARC) is responsible for carrying out the metropolitan planning process in all or parts of a 20-county area in the metro region. (All of 13 counties, parts of 7 counties)

ARC must implement a comprehensive, coordinated, and continuous transportation planning process, as outlined by the federal transportation act, Fixing America's Surface Transportation (FAST) Act.

ARC acts as a regional forum to address transportation and air quality issues. It is a policy-making organization made up of representatives from local governments and transportation authorities.

Approximately 50% of Georgia's population is represented through the ARC.



Population and Employment Trends

In the next 20+ years, ARC forecasts the Atlanta region will add 2.5 million people and 1.5 million jobs. Much of the population growth will occur in existing suburbs. However, significant growth is also expected in the region's core as an increasing number of people choose to live near jobs and/or transit.

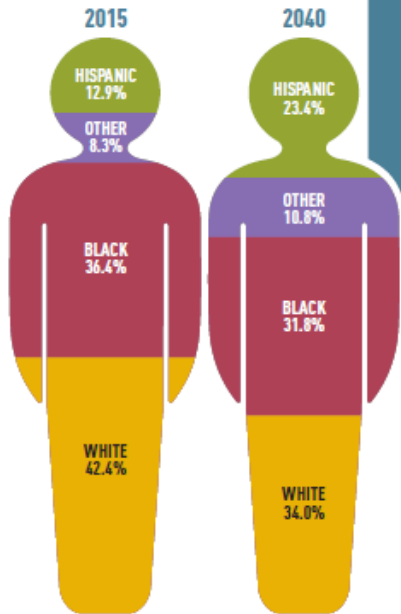
POPULATION 2040
8 MILLION

2015
5.5 MILLION

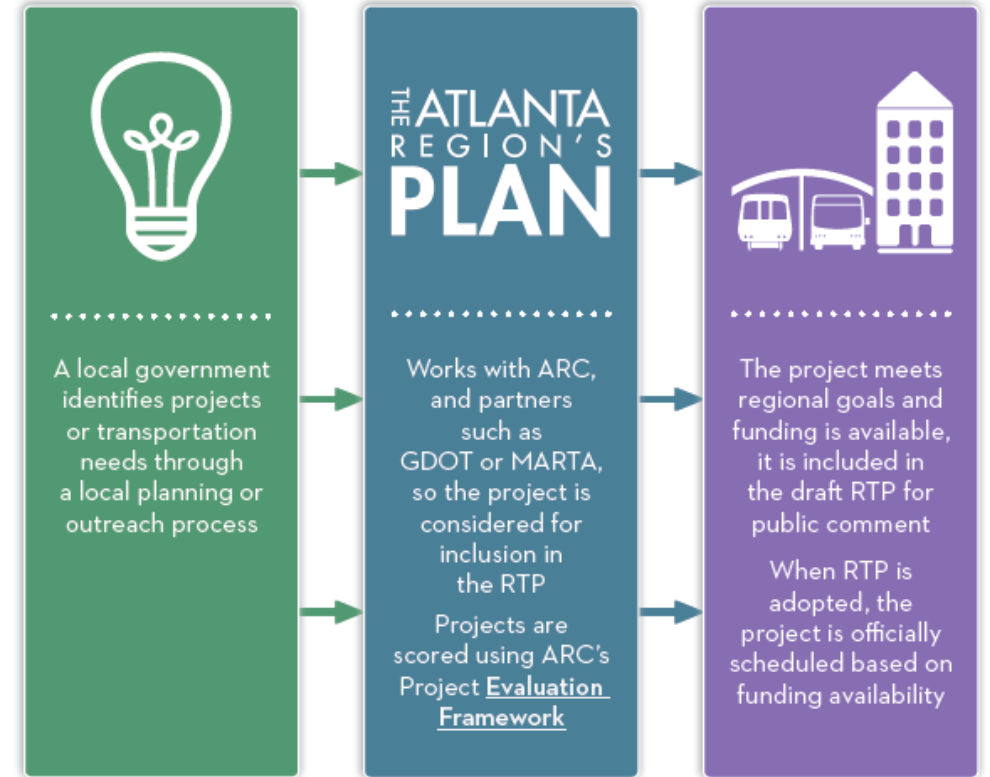
JOBS 2040
4 MILLION

2015
2.5 MILLION

The Atlanta region is experiencing a major demographic shift as Baby Boomers age and lifespans increase. By 2030, one in five residents will be over the age of 60, compared to one in ten in 2010. As our region grows older, it also is becoming much more diverse, with minority groups making up the majority of the metro area's population.



How Transportation Projects are Identified



Community Engagement Values, Techniques, and Process

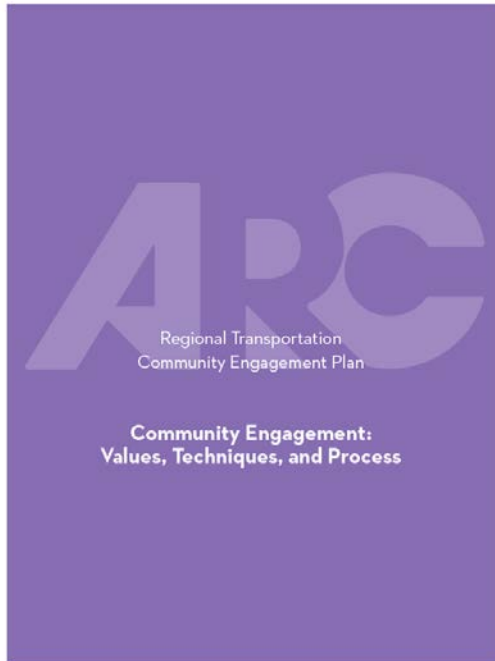


TABLE OF CONTENTS

How to Get Involved? (pg. 1)

How to Choose an Engagement Technique? (pg. 3)

How to Analyze and Evaluate Community Feedback? (pg. 17)

ARC's Public Participation Policies and Procedures for Transportation Planning (pg. 20)

Audience:

- Planners - ARC staff & others
- Elected officials
- Community advocates
- Engaged residents

How to Get Involved: Where do I share my input about transportation?



There's more than one way to be a part of the transportation process. Check out this overview and pick what works best for you!

“FORMAL” ENGAGEMENT

Attend ARC committee meetings, give input at public hearings, submit comments at public meetings

Any written or verbal comments submitted at public hearings or during plan public review periods become part of the written record of the plan's development

Formal engagement is often related to a specific plan or policy

“EVERYDAY” ENGAGEMENT

Attend informational meetings, like open house sessions, forums, or panel discussions

You can visit a meeting one time, take an occasional online survey, or you can find opportunities for sustained involvement and on-going conversations

There are many opportunities for engagement around policies and vision-setting to guide specific plans

Connect with ARC via social media or subscribe to an online newsletter for regular information on latest happenings

More About How to Get Involved

Where to Share Your Input Locally

Master/Comprehensive Plan Meetings

To find out more about these meetings check your city/county website for information

City/County Council Meetings

To find out more about these meetings check your city/county website for information

Neighborhood Associations

Research about your local area to find where these meetings take place and when meetings are taking place

Involvement at ARC

Attend ARC Meetings or Events

Join an ARC Advisory Group

Sign up for ARC newsletters and follow social media

Submit Written or Verbal Comments to ARC

Events to Share Your Input

VOTE - in every election!

Open Houses

Check city/county website and social media for events

Local Plans

Check city/county website and social media for events and info

Surveys/Studies

Check city/county website and social media for events

ENGAGEMENT TECHNIQUES AT A GLANCE

| ENGAGEMENT TECHNIQUES | | STAFF | TIME | FINANCIAL |
|-----------------------|-------------------------------|-------|------|-----------|
| Face-to-Face | Community Meetings | | | |
| | Open Houses | | | |
| | Neighborhood Meetings | | | |
| | Focus Groups | | | |
| | Presentation/ Speakers Bureau | | | |
| | Stakeholder Interviews | | | |
| Technology | Social Media | | | |
| | Website | | | |
| | Online Town Hall Meetings | | | |
| | Surveys (online or paper) | | | |

SURVEYS

Surveys are a tried and true way to receive feedback and opinions on a wide array of issues. They should be thoughtfully designed to ensure that questions are clear, concise, and unbiased. It can also be helpful to share the expected amount of time a survey will take to complete.

Typically, surveys are offered online. Paper copies can also be provided in public locations, such as city halls, schools, and libraries. However, someone then must input all that data manually!

In some instances, a scientific survey is warranted to ensure a diverse cross-section of the population is reached. In the past, these surveys were often conducted by phone. As more people chose to abandon a home landline and move to cell phones only, this becomes more of a challenge. However, technology is quickly filling that gap through analytics.

Points to Consider:

- Ability to reach a very wide audience
- Consistency in questions asked
- Easy for people to share with friends and colleagues
- Doesn't allow for face-to-face conversation
- Limited in allowing people to raise questions or comments not already mentioned in the survey

Resource Needs:

| | | | |
|-----------|-----|--------|------|
| | Low | Medium | High |
| Staff | | | |
| Time | | | |
| Financial | | | |

Evaluation Metrics:

- Summary and analysis of data
- Number of survey respondents
- Demographics of survey respondents

ARC's Public Participation Policies and Procedures for Transportation Planning

Policies and Procedures

ARC's Public Participation Procedures:

Administrative Modification and Amendment Process

ARC maintains a regular update schedule for the Transportation Improvement Program (TIP) / Regional Transportation Plan (RTP). With this goal in mind, ARC works with its planning partners to accommodate revisions to the TIP/RTP as expeditiously as possible within the limits imposed by federal guidelines and regulations. The TIP/RTP revision process should be considered a continual process, with requests accepted at any time and held for processing at the next scheduled opportunity.

There are two types of revisions: administrative modifications and amendments. Administrative modifications are minor routine changes that occur during the project development process and are unlikely to be controversial in nature. Amendments are more significant changes that impact air quality conformity and fiscal constraint. Therefore, they are processed with a higher degree of formality. Depending on the classification assigned to the change request, the timing, public participation, and approval processes can vary substantially.

The Transit Program of Projects (POP) is an appendix to the Transportation Improvement Program (TIP) outlining the detailed description and costs for projects under the Federal Transit Administration (FTA) formula fund programs. The main body of the TIP lists the actual suballocation amounts for the recipient under each of the FTA formula fund programs for the Atlanta Urbanized Area (UZA) with the POP providing further programming information on how those funds are to be spent. The ARC TIP public involvement process is used to satisfy FTA public participation requirements for suballocated funds.

Administrative Modifications

Administrative modifications to the TIP are processed by staff with no official action required by the ARC Board or its subcommittees. Advance disclosures of the proposed changes will be coordinated with vested stakeholders. ARC will release a list of proposed changes within three weeks following the deadline defined for that submittal cycle. The list of the changes along with updated TIP and RTP project lists will be published on the TIP website within one week of being processed. Fact sheets will be available three weeks after processing. Administrative modifications are reviewed and processed in accordance with these procedures, provided that:

- The modification does not affect the air quality conformity determination for the Atlanta nonattainment area.
- It does not impact financial constraint.
- It does not require public review and comment.

Occasionally, administrative modifications may be deemed time-sensitive and unable to be postponed until the next scheduled modification opportunity. At the request of the project sponsor, ARC staff reviews the proposed change to determine eligibility of a special administrative modification for processing. Once the change has been reviewed, the special administrative modification is processed. An email describing the change is sent to partner agencies and the project sponsor. A copy of the page of which the project appears in the updated RTP/TIP is attached to the email. An updated project list with the processed change may be immediately posted to the ARC website upon distribution of the notification of the special administrative modification.

In other cases, the change does not appear in the TIP project list until the next administrative modification opportunity.

The Regional Transportation Community Engagement Plan

- 2019 update to federally required public participation plan
 - Community engagement guide for public
 - Adopted public participation procedures for ARC transportation planning
 - Response to USDOT directive
- Open for public review April 12 - May 27, 2019
 - Available on [ARC's website](#) (in the Community Engagement section, under Transportation, Community Development, or Leadership/Engagement)
 - Submit comments to: Melissa Roberts, mroberts@atlantaregional.org
- Committee approvals in June: TCC on 6/7; TAQC on 6/16; ARC Board on 6/26/19

Thank you

Melissa Roberts

Community Engagement & Equity Manager
Transportation Access & Mobility Group
Atlanta Regional Commission

mroberts@atlantaregional.org

470.378.1563

