

CONCEPT 3
2018 UPDATE



Project Evaluation Measures



Reliability // On-time performance expectation based on MARTA's current services by mode.



Social Equity // Population within 1/2 mile who are non-white or under the poverty line.



Connectivity // Number of connections between the project and existing high-frequency transit services.



Compatibility // Ratio of jobs and population within 1/2 mile.



Efficiency // Jobs and population within 1/2 mile of station areas divided by weekday service miles.

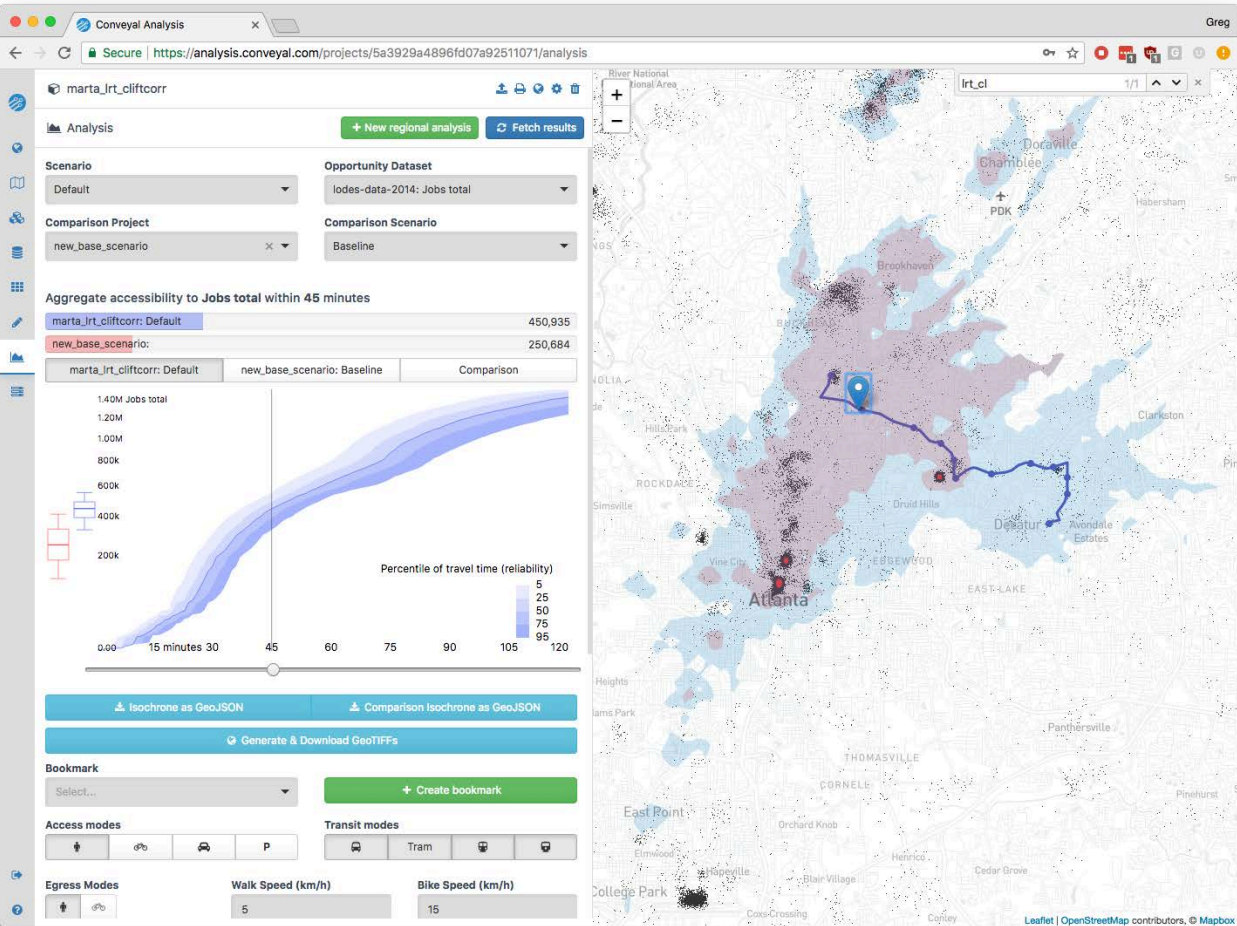


Job Accessibility // Built-in Conveyal measures weighted by total population and social equity factors.

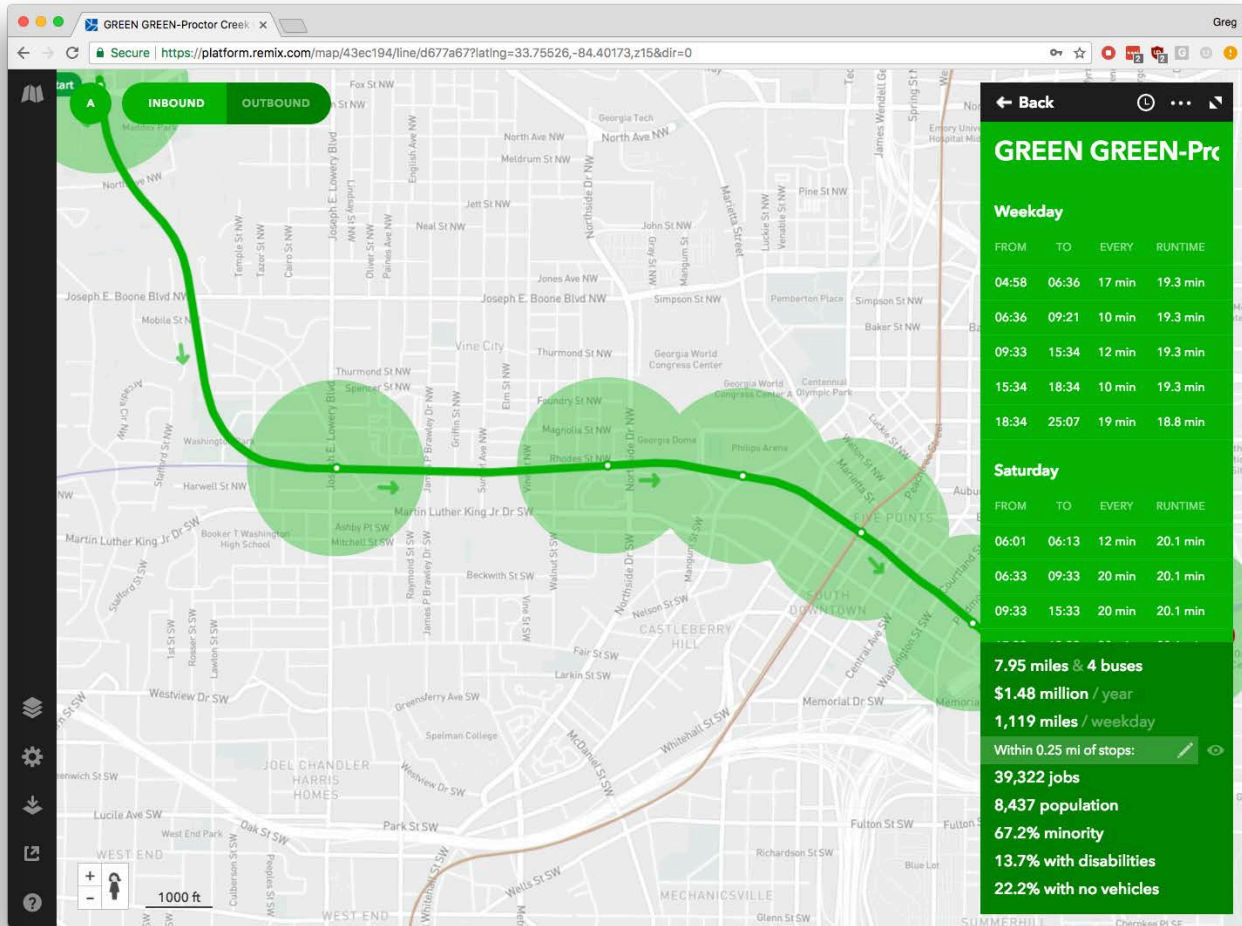


Sensitivity // Intersections with culturally and environmentally sensitive land uses, weighted by project length.

Conveyal

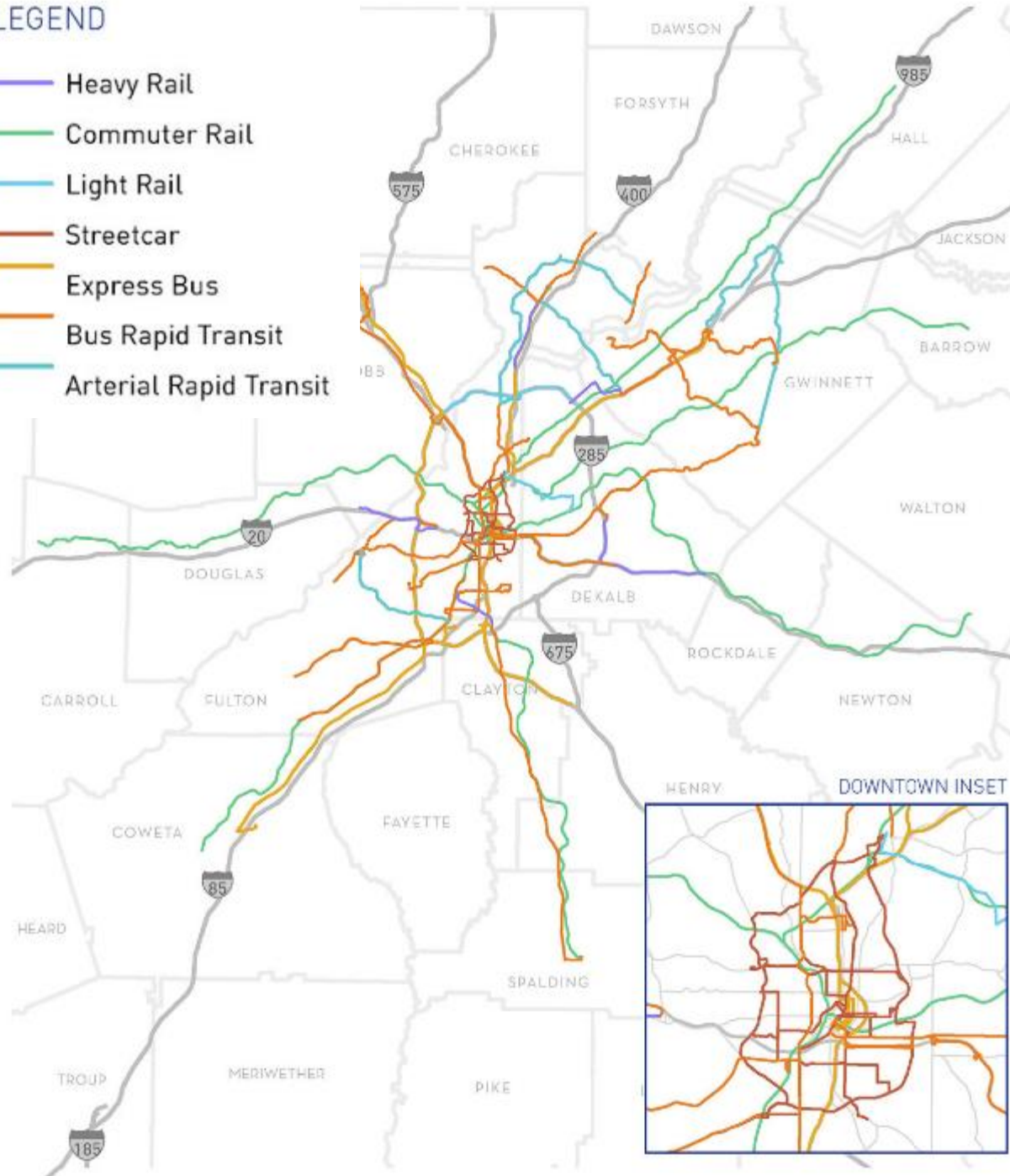


Remix



LEGEND

- Heavy Rail
- Commuter Rail
- Light Rail
- Streetcar
- Express Bus
- Bus Rapid Transit
- Arterial Rapid Transit



Concept 3 Vision

RTV-004 // MEDLOCK BRIDGE RD BUS RAPID TRANSIT

Start: McGinnis Ferry Rd
 End: Chattahoochee Rd
 Length: 16.84 miles
 Estimated Stops: 10
 Lead Agency: Fulton County

This project provides BRT service along Medlock Bridge Road in North Fulton County.

RTV EVALUATION MEASURES



Reliability:
MODERATE



Connectivity:
VERY LOW



Efficiency:
VERY LOW



Sensitivity:
VERY LOW IMPACT



Social Equity:
LOW IMPACT



Compatibility:
MODERATE



Job Accessibility:

- Regional Job Accessibility (RJA)
- 70th Percentile of RJA
- 90th Percentile of RJA
- RJA for Low-Income and Non-White People
- 70th Percentile of RJA for Low-Income and Non-White People
- 90th Percentile of RJA for Low-Income and Non-White People

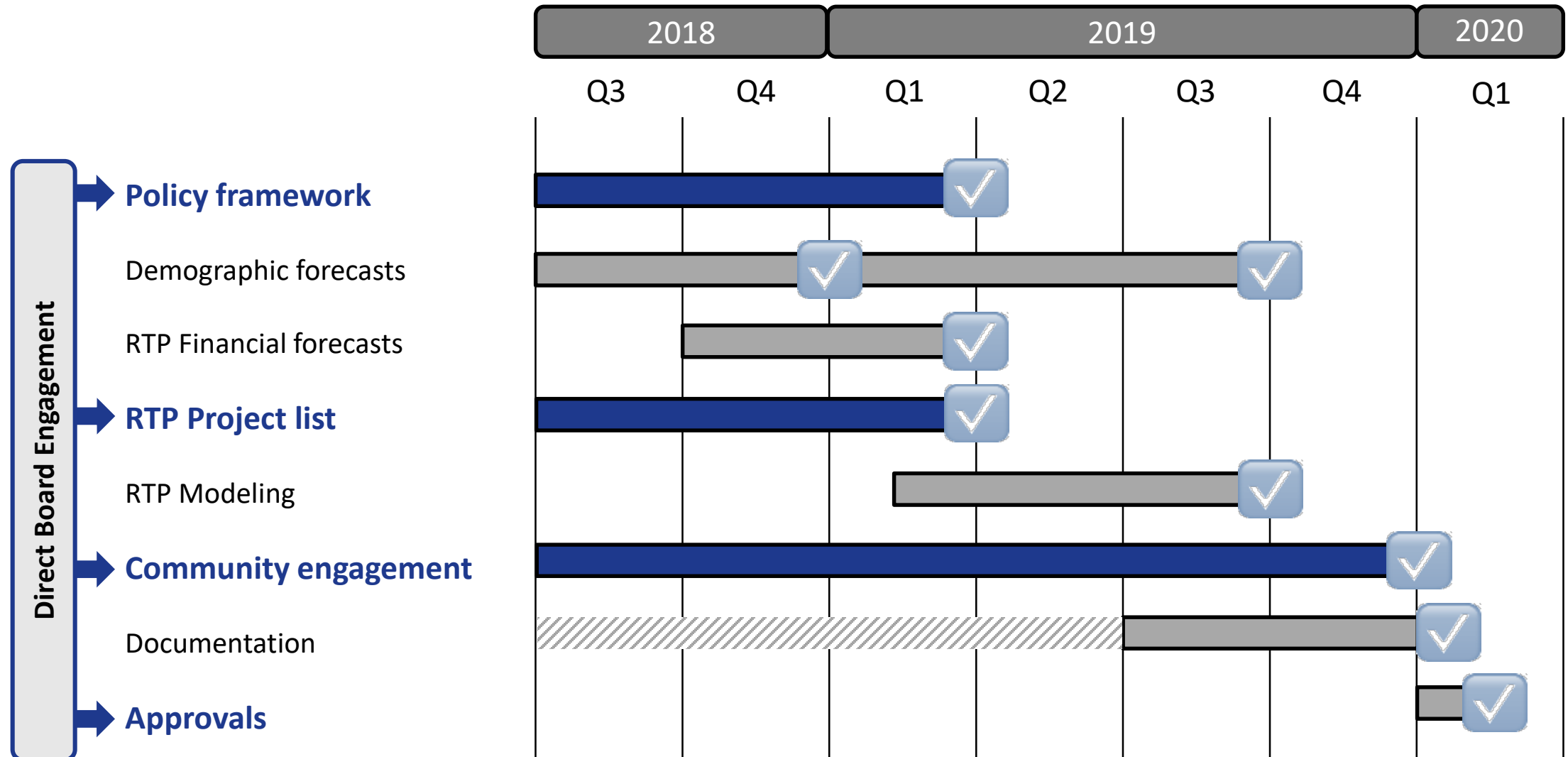
<http://garc.maps.arcgis.com/apps/webappviewer/index.html?id=08a77c3585c74c34a6f83634f31086b8>



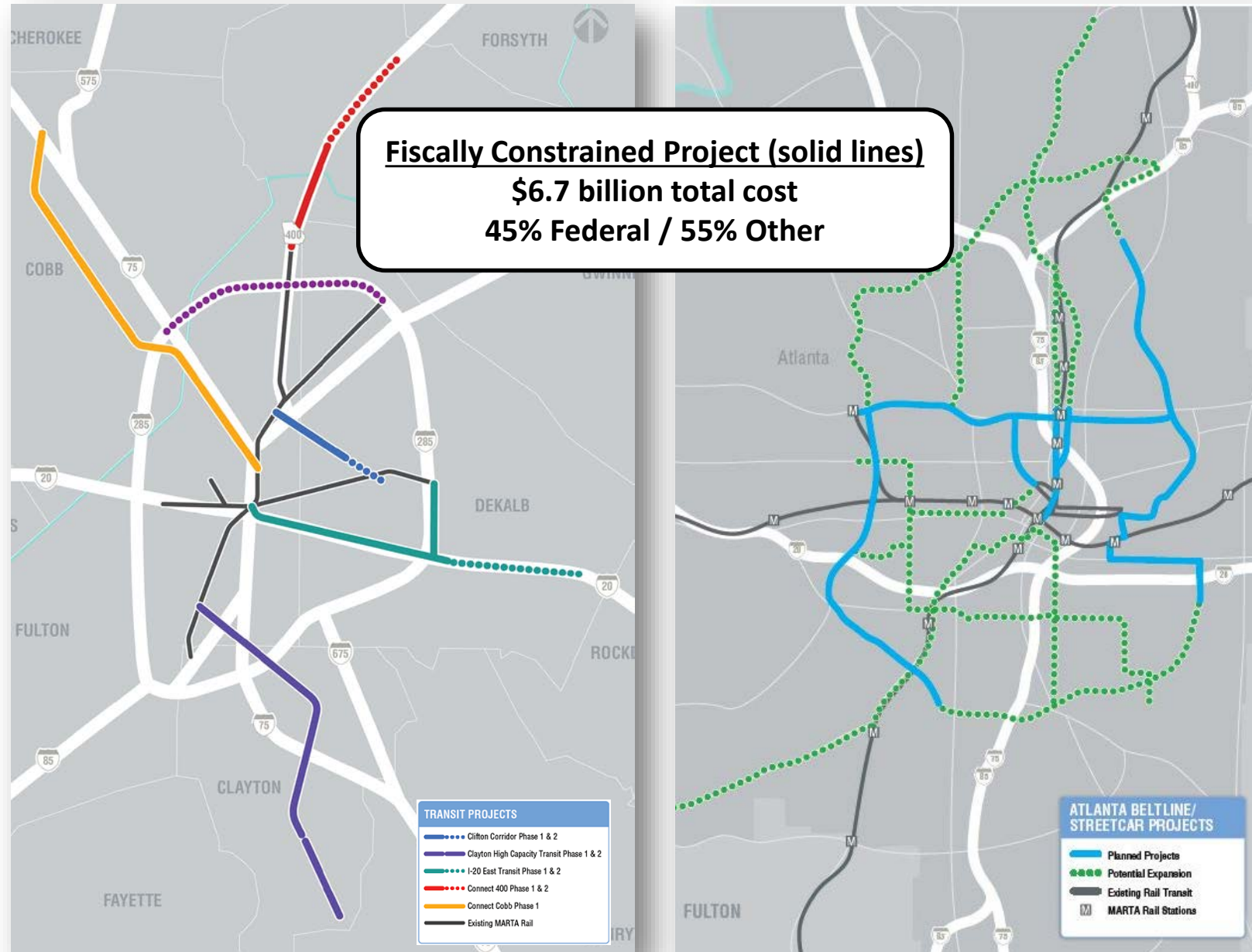
Extending the Plan Horizon to 2050

Transportation Coordinating Committee Meeting
February 8, 2019

Plan Update Milestones

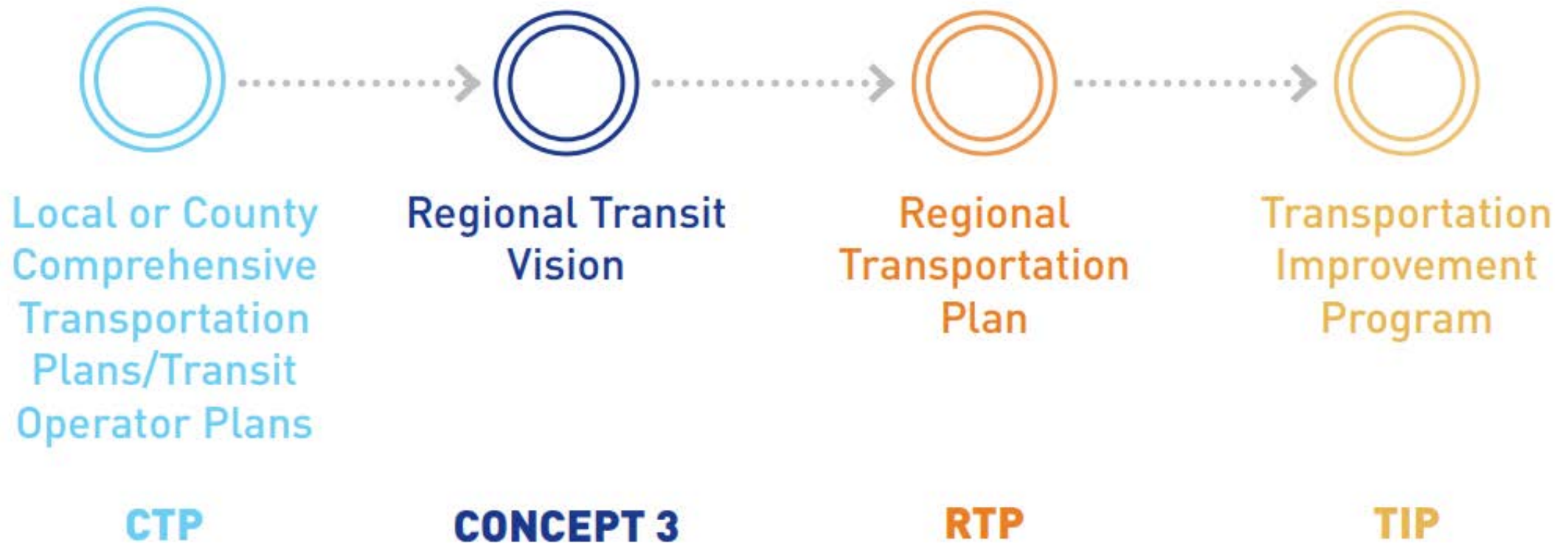


Transit Expansion Projects in the Current RTP



Regional Transit-Planning Process

Pre-ATL Authority (HB 930)



Market Based Scenario

Heavy Rail

GA 400 to Holcomb Bridge
Norfolk Southern Railroad
I-20 Extension

Light Rail

I-285

Bus Rapid Transit

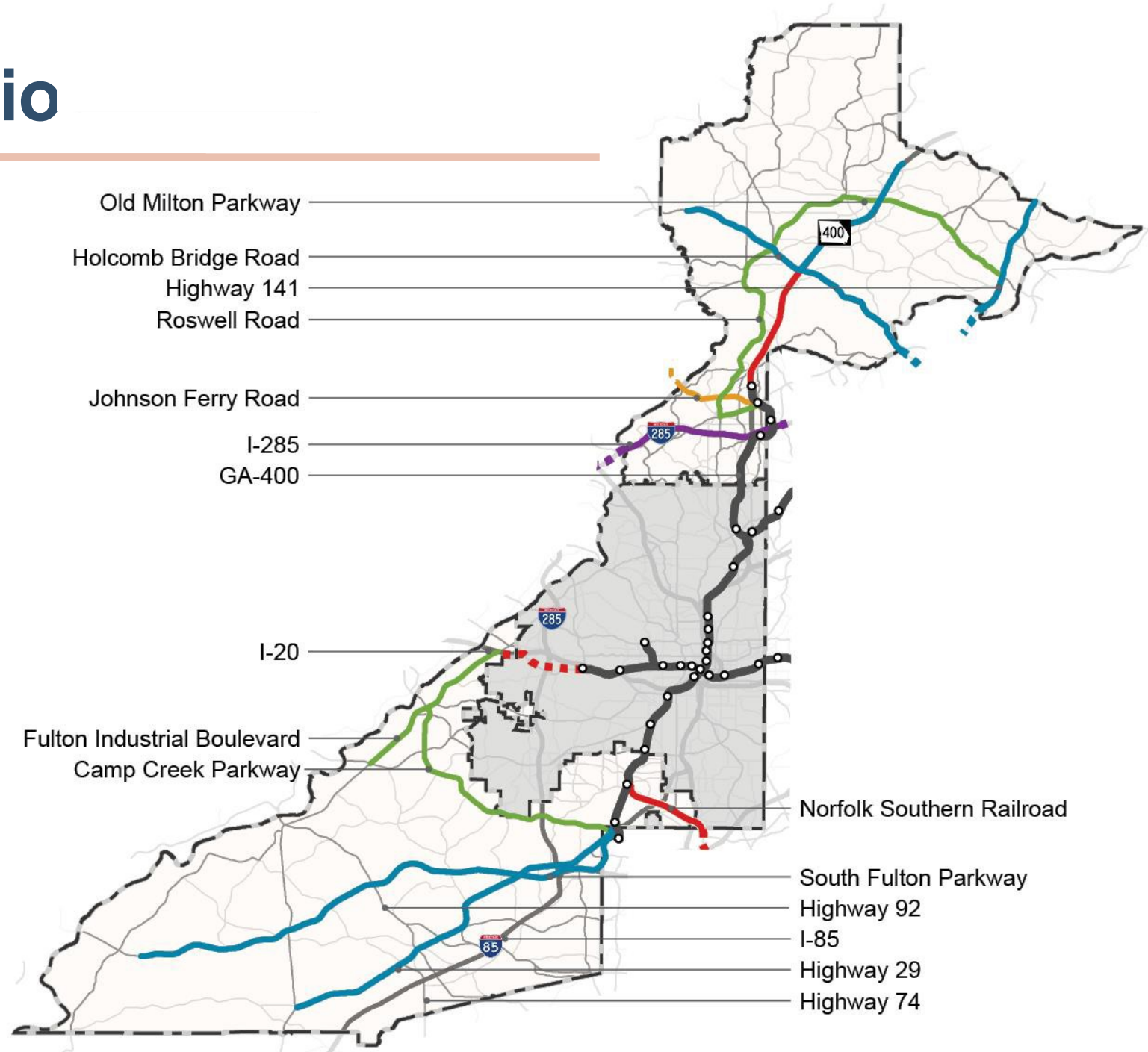
GA 400 Holcomb Bridge to Windward
Holcomb Bridge Road
Highway 141
Highway 29
South Fulton Parkway to Chatt Hills

Arterial Rapid Transit

Roswell Road
Old Milton Parkway
Camp Creek Parkway
Fulton Industrial Boulevard

Frequent Local Bus

Johnson Ferry Road



1/2- Cent Transit SPLOST with BRT/ART

Bus Rapid Transit

GA 400 to Old Milton

Holcomb Bridge Road

Highway 29

South Fulton Parkway to Highway 92

Arterial Rapid Transit

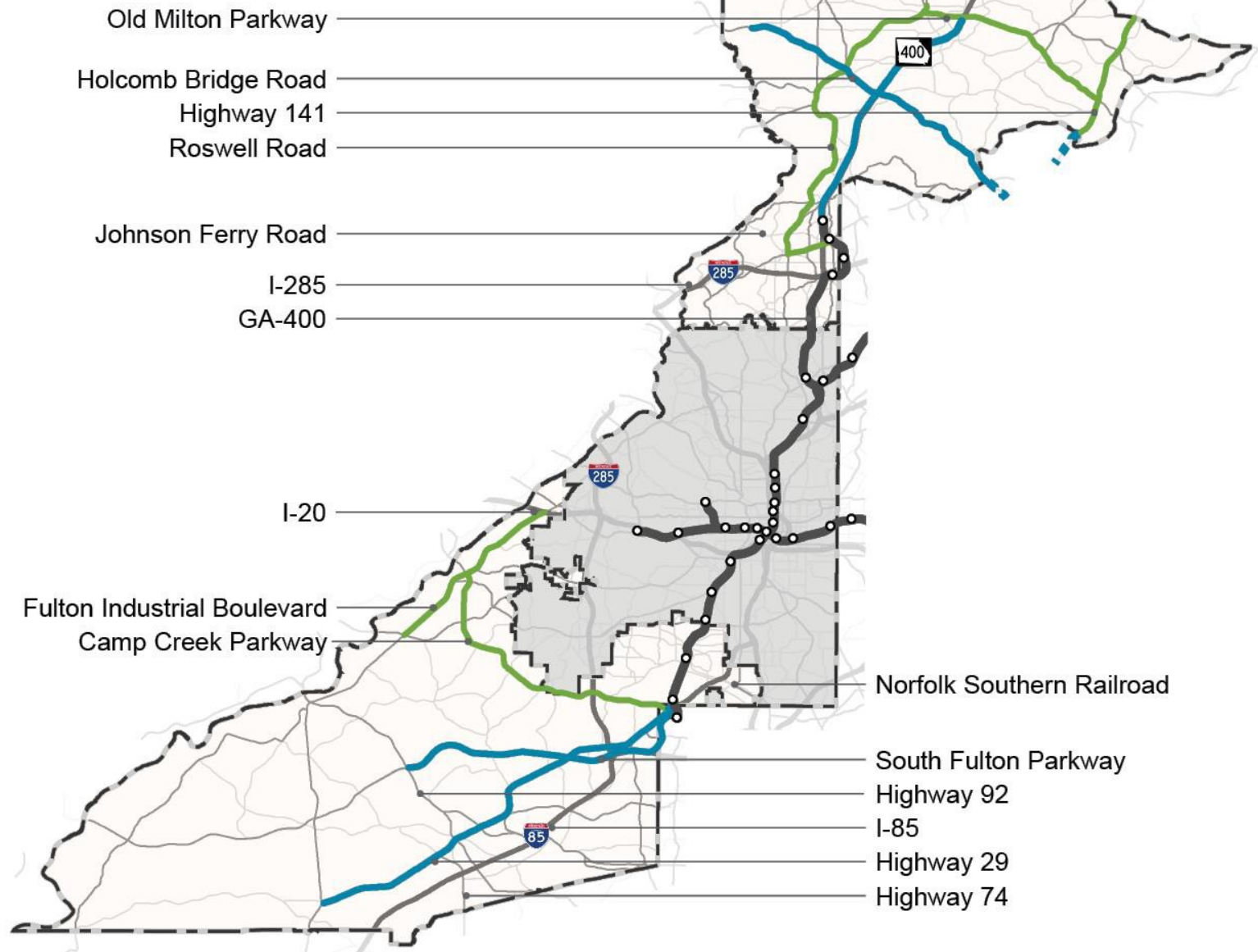
Roswell Road

Old Milton Parkway

Highway 141

Fulton Industrial Boulevard

Camp Creek Parkway

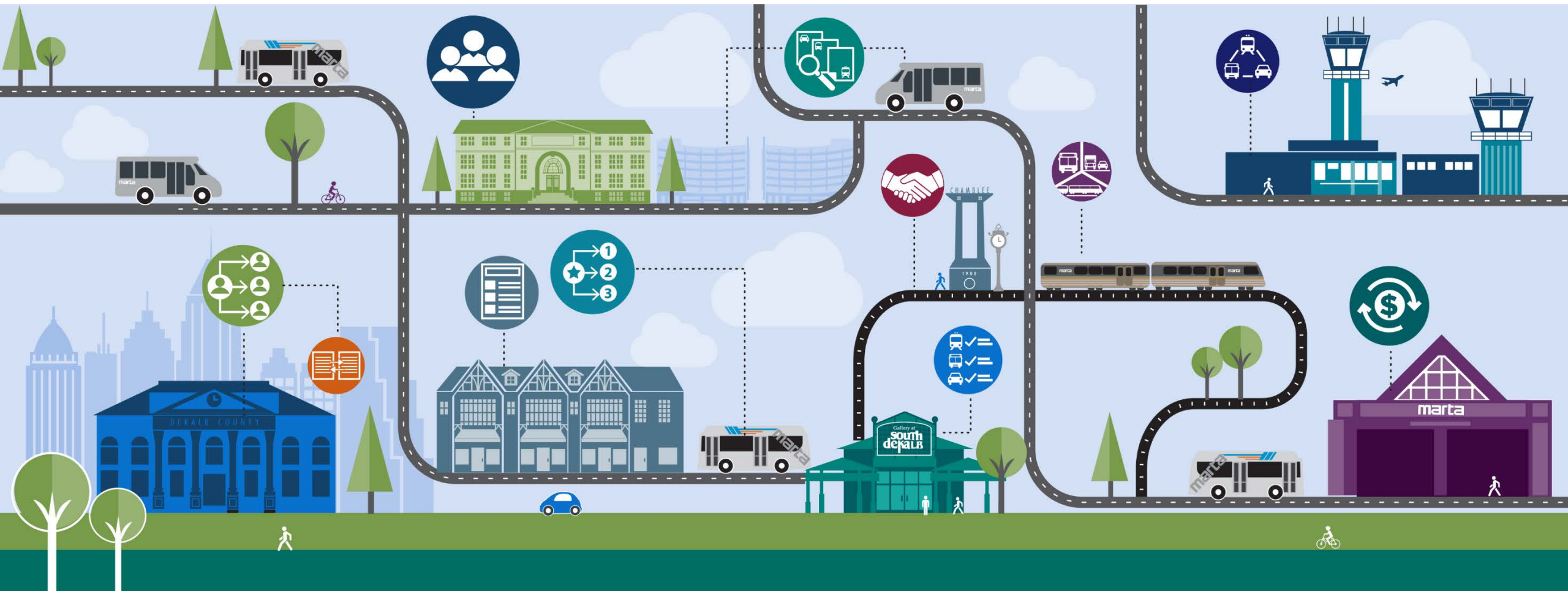




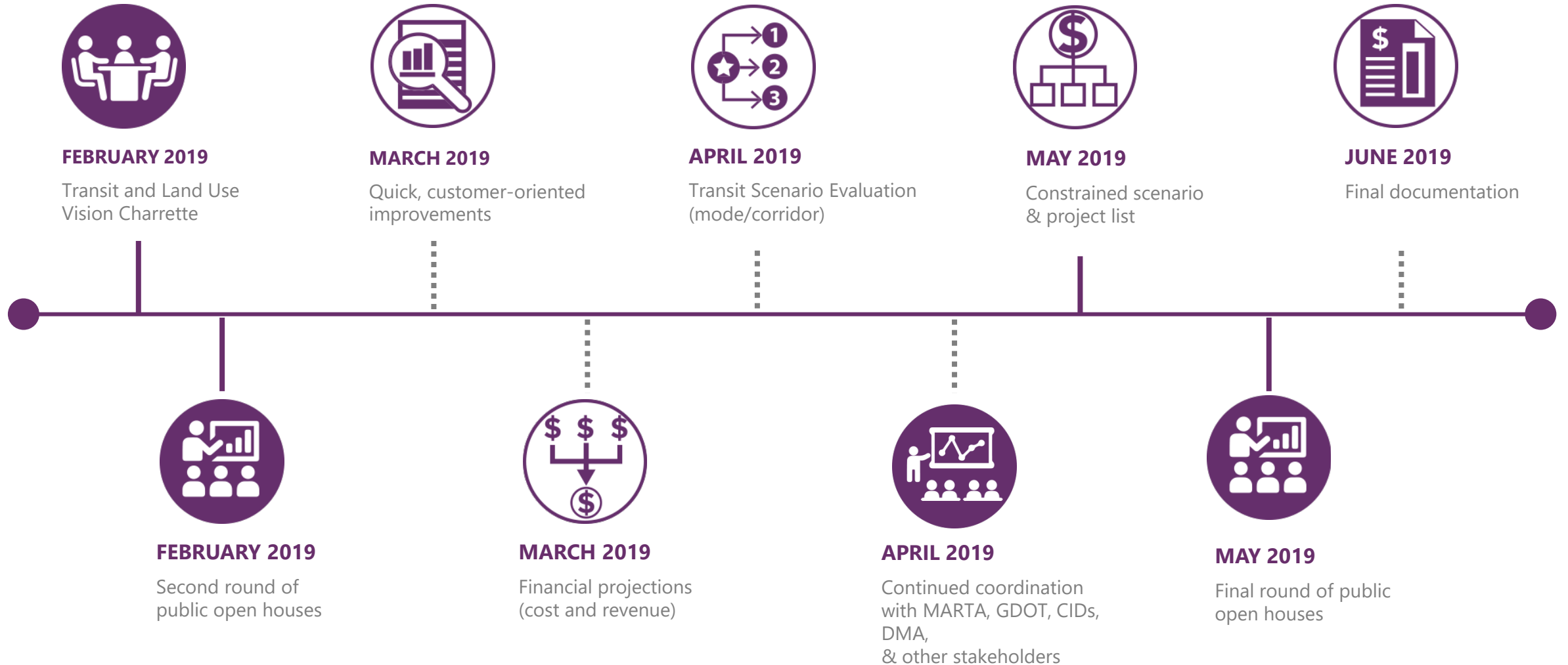
DeKalb County

TRANSIT MASTER PLAN

No Boundaries—Today's Preparation, Tomorrow's Achievement



Process



Other Transit Planning Initiatives

- Clayton County Transit Study
- Atlanta's Transportation Plan
- Aerotropolis CID Transit Study
- Cobb County Transit Plan
- City of Smyrna Transit Study
- Forsyth County Transit Study
- Several Corridor Studies
- Other jurisdictions considering transit next steps
 - Spalding
 - Newton
 - Coweta