

Open House

2019 Call for LCI and CDAP Projects

February 6, 2019



Led by ARC's Community Development Group

Photo Credit: Metro Atlanta Chamber

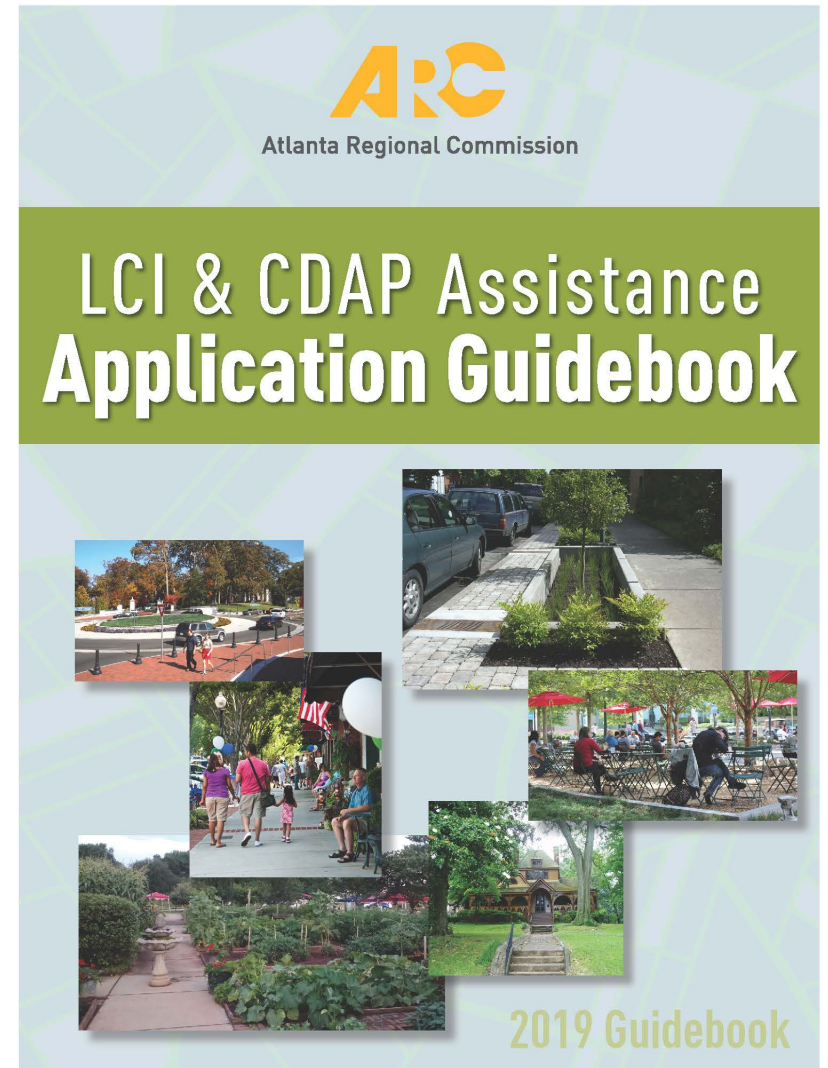
AGENDA

- Application highlights
- Presentation by partners
- Georgia Smart Communities Challenge
- Freight Cluster Plan Announcement
- Open House

Photo Credit: Metro Atlanta Chamber

Application Highlights

- Review guidebook and website prior to starting application
- Seek all approvals and letters of support from elected leadership for project(s) and local match
- Important dates: March 29th and second week of April



External Partners

Photo Credit: City of Dallas

Our Mission Is To Protect & Conserve Georgia's Natural Resources Through Advocacy, Engagement & Collaboration.



ISSUE EXPERTISE

Community Planning
Good Urbanism
School Location Choice
Stormwater & Urban Design
Housing Choice
Outdoor Recreation Economy
Small Towns
Corridor Revitalization

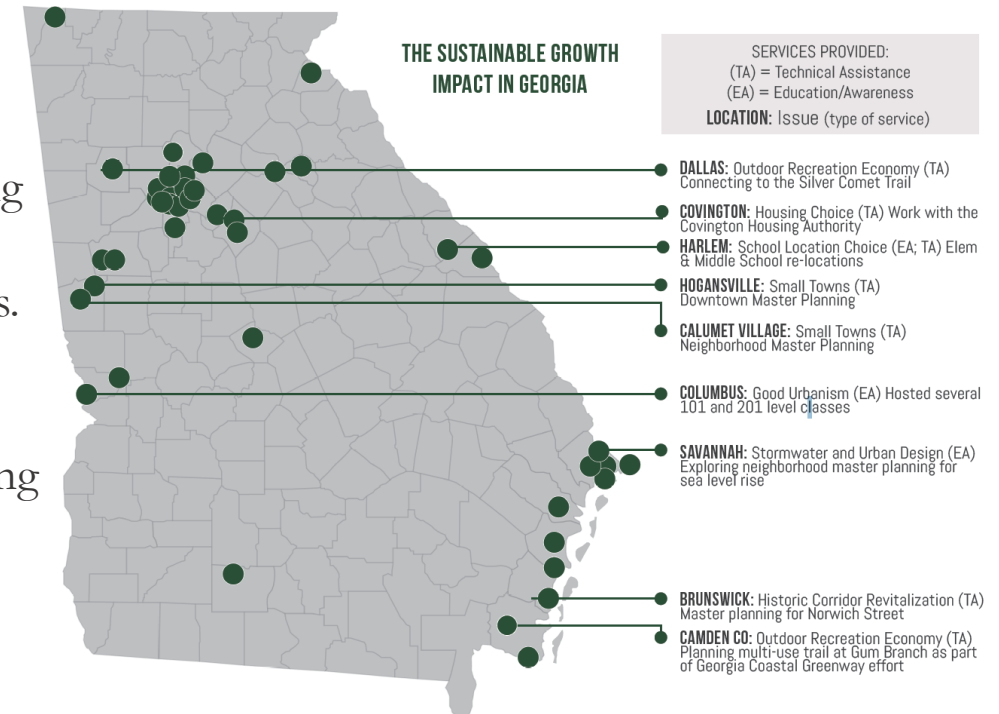
OUR SERVICES

TECHNICAL ASSISTANCE

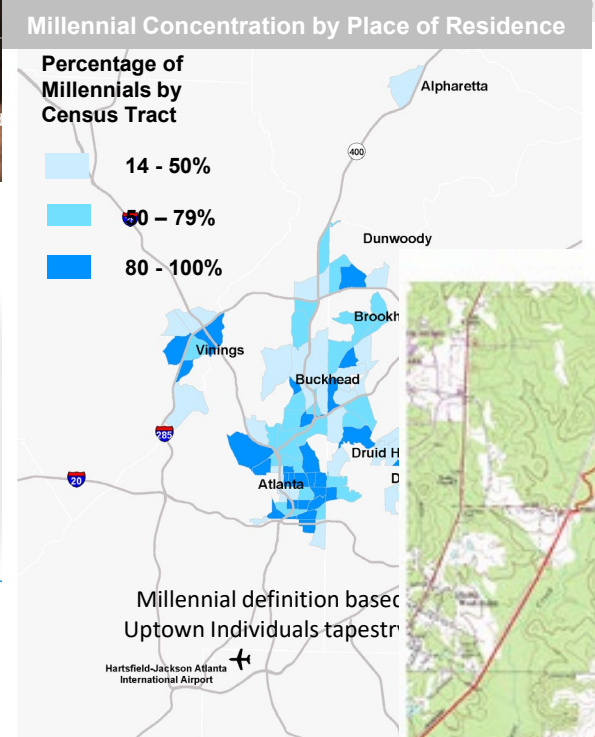
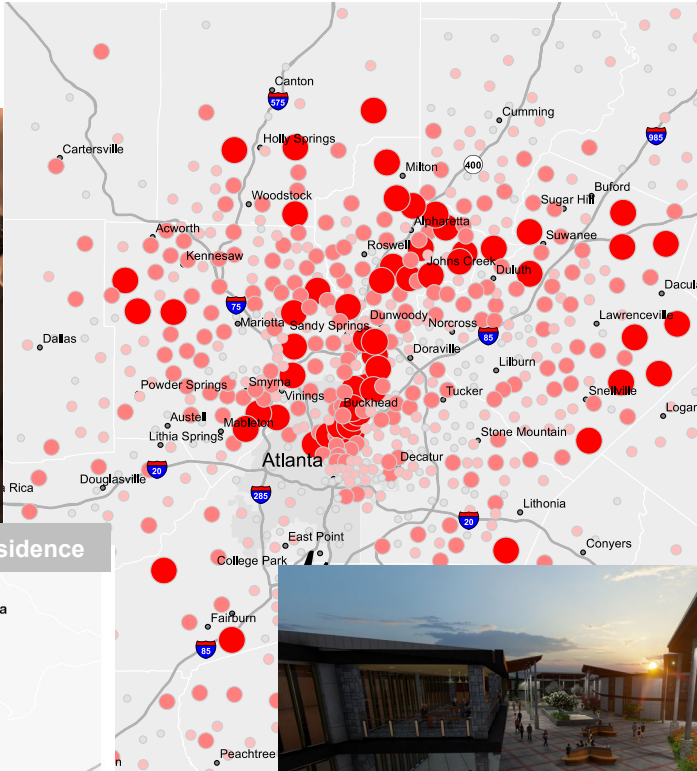
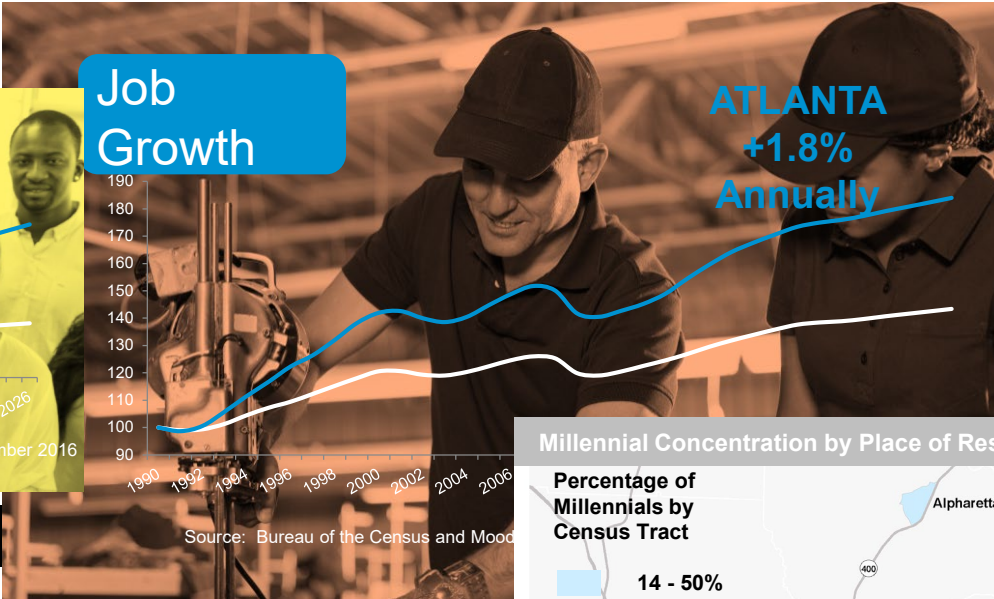
Could include workshops, master planning and consulting, facilitation, community engagement, partnering with issue experts.

EDUCATION/AWARENESS

Could include lectures, trainings, partnering with issue experts, hosting informational classes.



Georgia Power Community & Economic Development



NAME	CITY_FIPS	COUNTY_FIP	POPGWTH_18_23	MEDHVAL_18	MEDHINC_18	TOTPOP_18
Emerson	1327344	13015	13.97%	\$ 206,429	\$ 65,912	1,595
Haralson	1336526	13077	3.78%	\$ 213,889	\$ 99,465	157
Ludowick	1347788	13183	3.45%	\$ 105,575	\$ 39,944	2,340
Grovetown	1335716	13073	3.29%	\$ 153,806	\$ 55,058	14,739
Braselton	1310076	13157	3.02%	\$ 259,431	\$ 79,489	10,611
Port Wentworth	1362328	13051	2.92%	\$ 193,103	\$ 71,889	9,286
Richmond Hill	1365044	13029	2.79%	\$ 202,803	\$ 62,039	11,841
Bishop	1308200	13219	2.76%	\$ 282,500	\$ 66,124	350
Ball Ground	1305036	13057	2.74%	\$ 187,759	\$ 60,238	1,889
Harlem	1336696	13073	2.68%	\$ 142,464	\$ 39,065	3,338
Lawrenceville	1374936	13135	2.65%	\$ 291,430	\$ 92,928	19,836
Pembroke	1366004	13029	2.65%	\$ 147,074	\$ 39,756	2,639
Cumming	1320932	13117	2.64%	\$ 227,366	\$ 49,605	6,614
Bloomington	1308944	13051	2.60%	\$ 186,585	\$ 56,880	3,453
Hapeville	1336472	13121	2.60%	\$ 128,607	\$ 40,654	6,947
Rest Haven	1364752	13135	2.58%	\$ 120,000	\$ 43,385	81
Pooler	1362104	13051	2.58%	\$ 196,972	\$ 75,806	24,659
Flowery Branch	1330340	13139	2.57%	\$ 261,246	\$ 84,798	7,424
Guyton	1335884	13103	2.56%	\$ 144,486	\$ 55,306	2,056

WHERE ATLANTA LEADS

Financial Technology

70% of U.S. credit, debit and gift card transactions go through metro Atlanta

- NCR
- Global Payments
- Verifone

Cyber security

More than 25% of worldwide security revenue generated in Georgia

- Honeywell
- Dell SecureWorks
- RSA

Mobile Technologies

More than 200 startups focused on wireless mobility in metro Atlanta

- AT&T Mobility
- Cisco
- Verizon Telematics
- General Motors

Health IT

Nation's health IT capital; 225 health IT companies in Georgia

- McKesson
- Greenway Health
- athenahealth

Digital Media

Georgia top 3 TV/film production destination in U.S.; \$6B economic impact in GA

- Turner Broadcast
- Pinewood Studios
- ScreenGems

Source: Metro Atlanta Chamber, July 2015

The Andrew Young School of Policy Studies at Georgia State University accepts short-term consulting projects for public, private, and nonprofit organizations.

- Projects include service delivery assessment, program evaluation design, best practice identification, survey design, strategic planning, fiscal analysis, policy analysis, or other applied research.
- Consulting teams are directed by a faculty advisor or research professional. Teams work for 10 weeks producing deliverables which include white papers, executive reports, strategic plans, survey instruments, evaluation plans, or other documents defined in the scope of work.

Past Clients include:

Atlanta Bicycle Coalition

Center for the Visually Impaired

Environmental Protection Agency

Central Atlanta Progress

Living Walls

Center for Civic Innovation

Cities of Atlanta, Decatur, Forest Park

UPS Foundation

If you have questions about the suitability of a project, please contact:

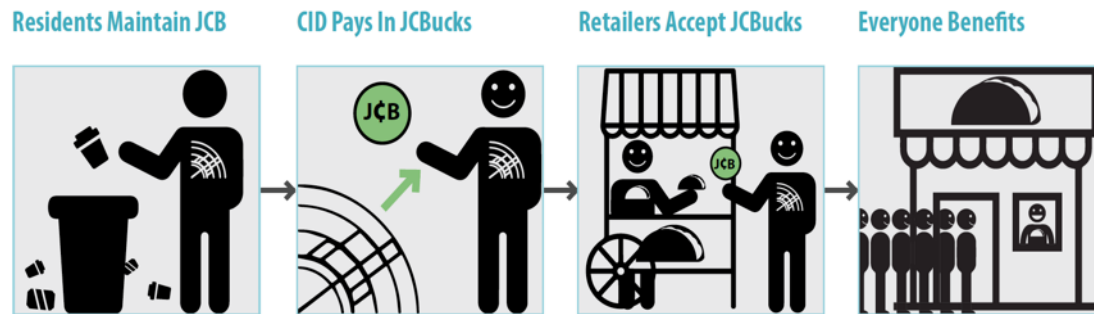
Cynthia S. Searcy**Assistant Dean for Academic Programs****csearcy@gsu.edu****404-413-0124**

URBAN DESIGN STUDIOS @ GEORGIA TECH: SCHOOL OF ARCHITECTURE + SCHOOL OF CITY & REGIONAL PLANNING

Community Development & Equity: Mike Dobbins

michael.dobbins@design.gatech.edu

- Smyrna Spring Road Corridor
- Gateway 85 CID, Jimmy Carter Boulevard Corridor
- Powder Springs



Energy & Smart Cities: Perry Yang

perry.yang@design.gatech.edu

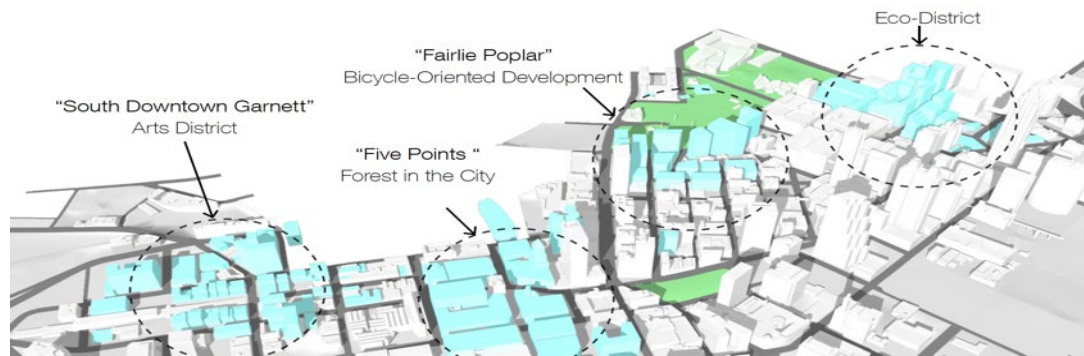
- Tokyo 2020 Olympics
- Georgia Tech/Tianjin campus, Shenzhen
- Urawa Misono, Japan



Transportation & Retrofitting Suburbia: E. Dunham-Jones

ellen.dunham-jones@design.gatech.edu

- Greenbriar Mall & Campbellton Road
- Cascade Rd Housing & Tree Canopy Infill
- Downtown Atlanta 2041: Driverless Cars



Water & Ecology: Richard Dagenhart

richard.dagenhart@design.gatech.edu

- NPU G public housing & Proctor Creek
- Sea Level Rise, Truman Parkway, Savannah
- Stormwater Management on the Beltline



SOUTHFACE

For the past 40 years, Southface has been a leader in the research, design, and transformation across the Southeast, driving innovative solutions to address resource efficiency, building science, and sustainable communities.

TEAM MISSION

The Planning and Sustainable Communities team creates energy, land use, and community planning solutions to problems at the intersection of the natural and built environments. We envision a balance of urban, rural, and wild lands with economic, environmental, and social equity.

SERVICES

- Public Plan Making/Community Involvement
- Conservation Planning
 - Conservation District Review
 - Sensitive Land Preservation
- Community Certifications
- Green Infrastructure
 - Placemaking
 - Workforce Development
- Innovative and Affordable Housing
- Policy Development, Research and Analysis





ULI Atlanta provides leadership in the responsible use of land and in the creation of sustainable, thriving communities. ULI Atlanta is one of the largest and most active district councils of the Urban Land Institute, and our geography includes all of Georgia, Alabama, and Eastern Tennessee.



40,000 members worldwide
1,200 members in the Atlanta
District Council



Membership is comprised of land
use, design, real estate development,
and finance professionals



Technical Assistance Programs
(TAPs) are our mission in action
<https://atlanta.uli.org/community-building/taps/>

A person is riding a bicycle away from the camera on a paved path. They are wearing a backpack and large headphones. The path is lined with trees and has a brick wall on the left. Other people are walking in the background. The entire image has a warm, orange-yellow tint.

Georgia Smart Communities Challenge

Photo Credit: Metro Atlanta Chamber

GEORGIA SMART COMMUNITIES CHALLENGE

Positioning Georgia in the forefront of the smart, equitable, + resilient movement.

The Georgia Smart Communities Challenge is a first-of-its-kind opportunity for communities of any size in Georgia to receive funding and support that enables them to envision, explore, and plan for their smart and connected future.

Impact



Outreach

Impacted **2/3** of the GA community population

6 events with over **560** attendees, including mayors, city managers and county leaders; and **50+** national and local speakers

4 site visits across GA

Monthly newsletters for **1800+** subscribers

Media mentions: **40+** print articles, **4** tv news spots

Dozens of keynotes and panels

3 webinars with **200+** live viewers and another **200** recorded views

Beyond Pilot

Supports professional, lean team

Creative partnerships with industry and other groups

More than half of the funds will be directed at R&D to support Georgia Communities

Committed to supporting all Georgia communities, including underrepresented and disenfranchised

2019 Freight Cluster Plan Grant Solicitation



2017 TIP Solicitation – Four local project sponsors applied for \$250,000 each, for a total contract value of \$312,500:

- Aerotropolis Atlanta CIDs
- Gateway 85 CID
- Spalding County
- Tucker Summit CID

2019 Application Process:

- Submit at <http://www.atlantaregional.org/tipsolicitation>
- Need to include a Preliminary Scope and Project Sponsor Support Resolution
- Contact tipsolicitation@atlantaregional.com to request a login/password to submit your application
- Application Open **January 15 – March 29, 2019**

Open House

A large crowd of people is gathered in a street for an outdoor festival. The scene is filled with white pop-up tents on both sides of the street. In the background, there are several buildings, including a prominent one with a dark roof and a steeple, and a taller brick building on the right. Tall trees line the street, and the overall atmosphere is festive and busy. The image has a warm, sepia-toned color palette.

Photo Credit: City of Conyers