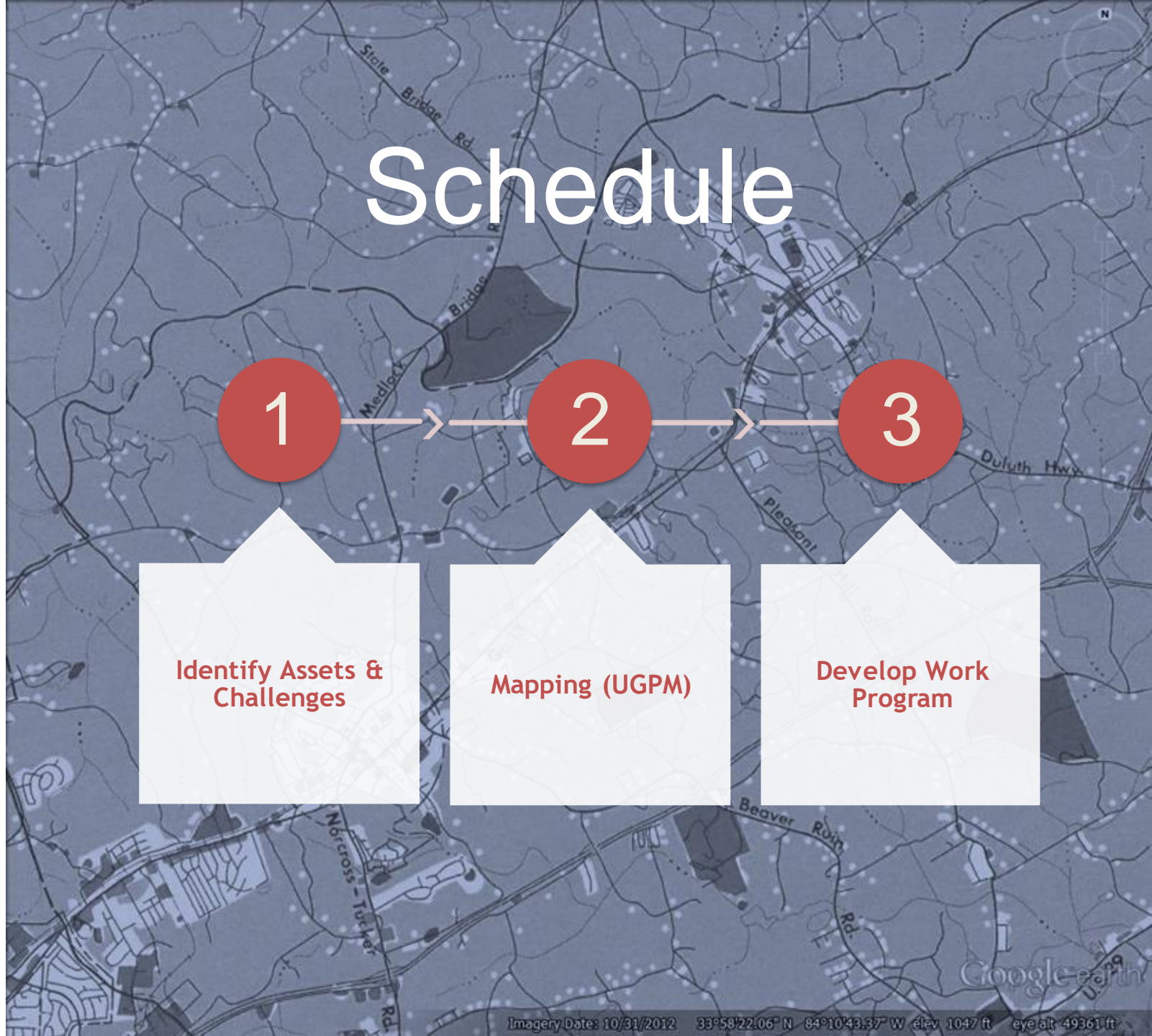


Regional Development Plan Component Update

Jared Lombard
October 10th, 2019

THE ATLANTA
REGION'S
PLAN

Ponce City Market, Atlanta



Purpose

- Describes the growth vision of the region
- Provides policy guidance for ARC programs and programming
- Provides input into the Regional Forecast
- Provides recommendations to local governments about future growth



Leonard Saunders



Regional Development Plan:

land use and transportation

CITY OF ATLANTA
CLAYTON COUNTY
COBB COUNTY
DeKALB COUNTY
FULTON COUNTY
GWINNETT COUNTY

"Section 1. Master Plan. It shall be the duty of the Commission to make comprehensive surveys and studies of transportation facilities, land use, public utilities, governmental facilities and services, natural resources, and other physical, social and economic factors, conditions and trends that are relevant to the probable future development of the district, and to make and from time to time, as it may deem proper, amend, extend or add to a master plan for the orderly growth and development of the district as a whole."

..... Act No. 847, Article V,
Section 1 (Ga. Laws 1960,
Vol. 2, pp. 3102-3118)

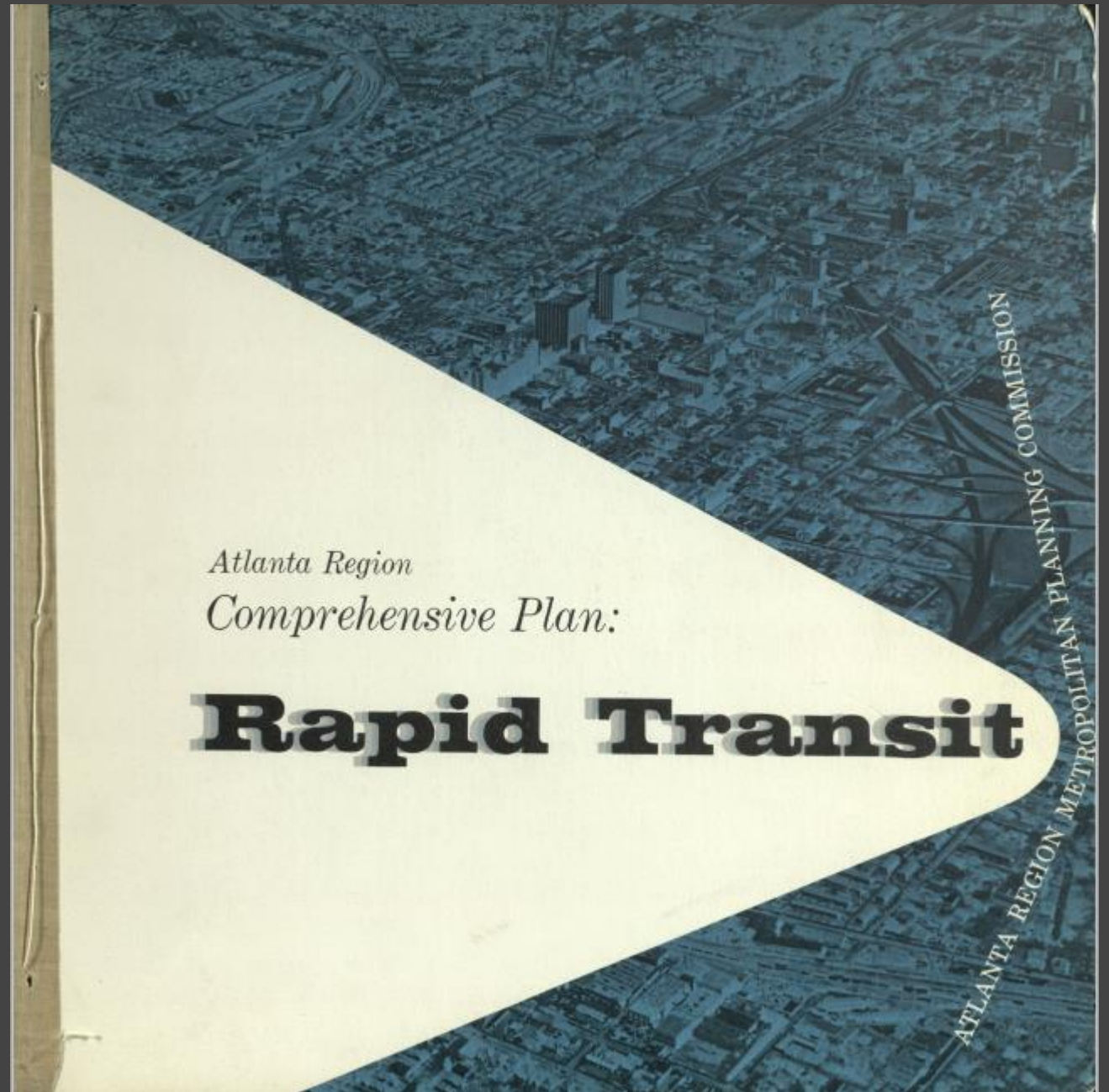
Map
G3924
.A8 G4
1962
.A88
c.2

Atlanta Region Metropolitan Planning Commission

900 Glenn Building, Atlanta 3, Georgia, March, 1962

Phone: 522-7577

Price: One Dollar



*Atlanta Region
Comprehensive Plan:*

Rapid Transit

ATLANTA REGION METROPOLITAN PLANNING COMMISSION

Regional Assets and Challenges



- The region is a global business hub. The continued investment in infrastructure, workforce, and quality of life will continue to ensure its success.



- To ensure the region's economic success, everyone must be prepared to advance in a productive career.



- The Atlanta region has successfully managed its limited water resources. Continuing the good stewardship will require conservation, new technology, and greater awareness.



- Market and land use factors are limiting housing opportunities and choice in the region.



- The region has strong but limited transit options. With the creation of a regional transit authority, significant coordination and prioritization will be required to maximize transit options.



- Funding for transportation has increased in recent years but the need for transportation investments continues.

Regional Assets and Challenges



- Metro communities will have to overcome more frequent environmental shocks and stressors to their infrastructure and residents.



- A person's race too often determines economic opportunity.



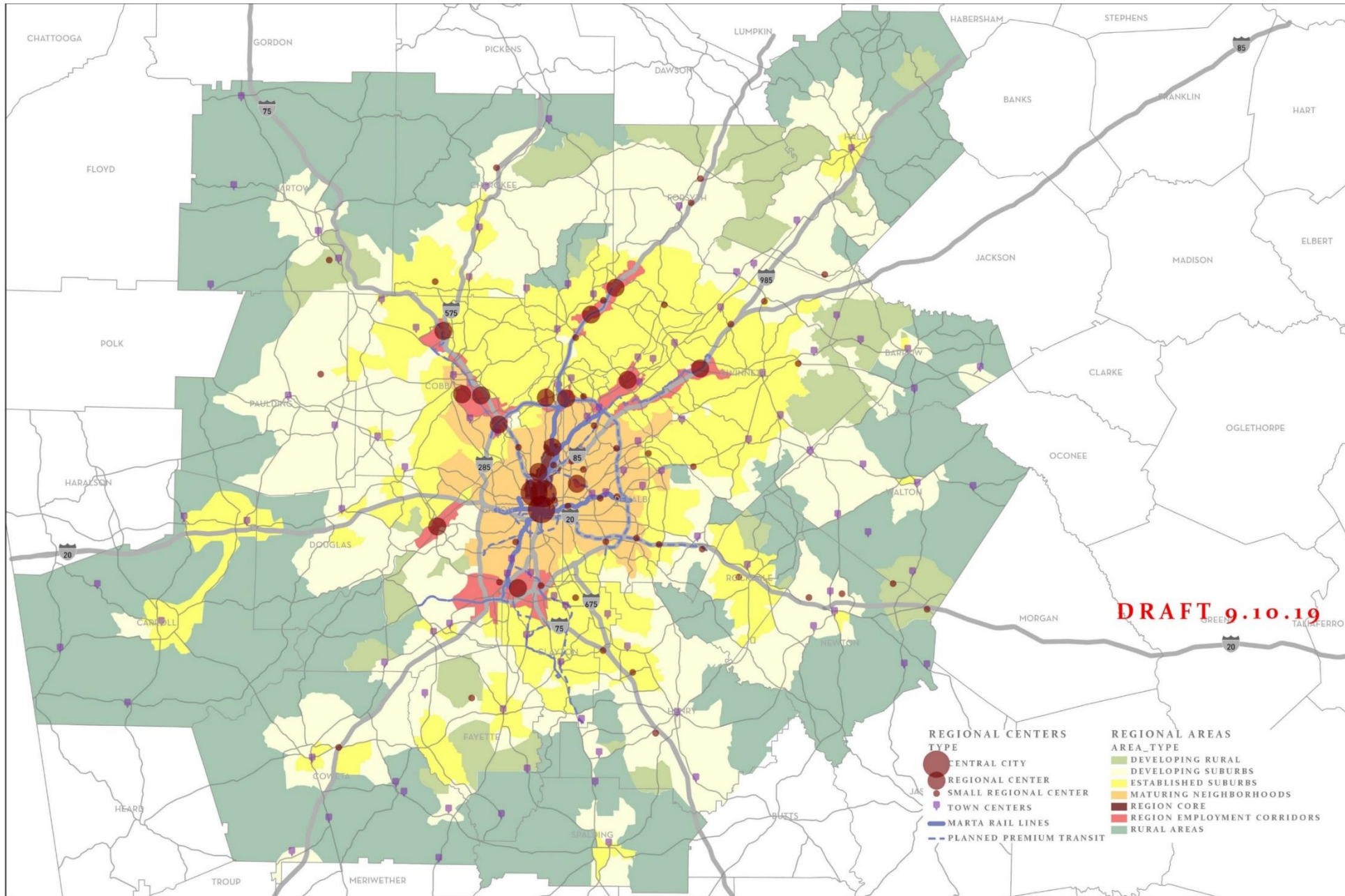
- Hartsfield-Jackson International Airport is the largest economic asset in the region and its continued success will require the region to coordinate land use, transportation, and economic development.



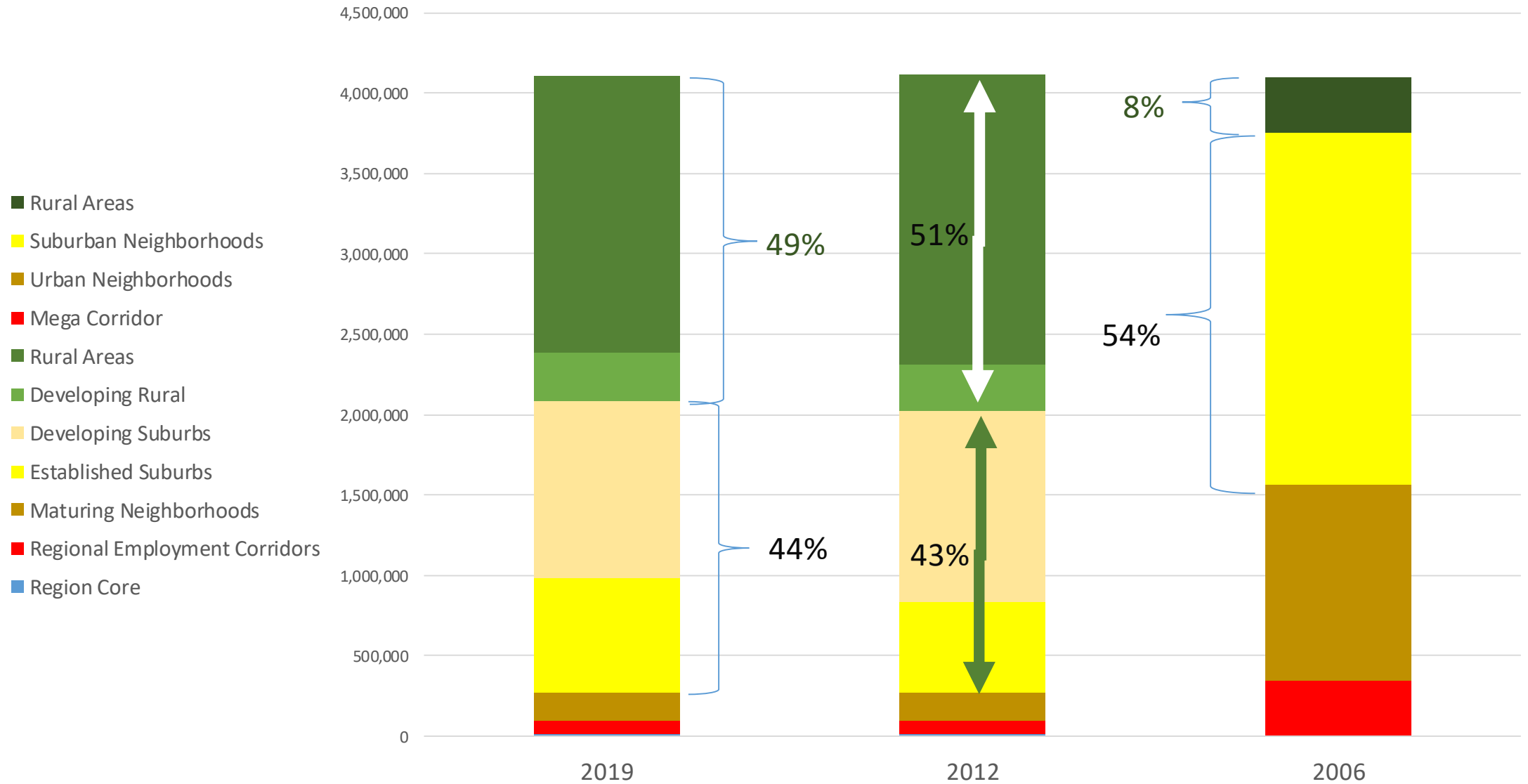
- Older adults need to have opportunities for active living and ongoing participation in civic life.



- Recognizing that place matters will help build a stronger regional and local identity.



UGPM Area Comparisons



Proposed 2020-2025 Work Program



LCI By the Numbers



122
total LCI
studies



142
supplemental
studies



116
transportation
projects

\$16.8 M

in total study
funds

\$237 M

in transportation funds

LCI By the Numbers



166,000
population
increase from
2000



107,000
new housing
units from 2000



62,000
businesses



955,000
employees

LCI Work Program

- Continue the LCI program to 2050 with \$2 million per year in study funds
- Add \$100 million in transportation funds in LCI funds from 2040-2050.

DRAFT

ARC Aerotropolis Implementation since 2015



3

CDAP
Projects



Finding the Flint



5

LCI Studies



6

Comprehensive
Plans



Freight Cluster
Study



Staff Assistance

ARC Aerotropolis Work Program

- Continue supporting the Alliance and communities with Technical Assistance
- Partner on an updated Blueprint

DRAFT

ARC Regional Housing Strategy

Strategy Framework

- Six Strategies
- 100 Local Government Tactics

Housing Subareas

- 10 Sub Areas identified through outreach and research

Online Tool

- Interactive Map
- Recommended Strategies and Tactics by Sub Area
- Dashboard with Performance Measures

ARC Regional Housing Work Program

- Provide Technical Assistance to local governments on strategies
- Continue to update Online Tool
- Develop a Housing-Transportation Program

DRAFT

ARC TOD Work



Developed TOD Plans at East Lake, Kensington, East Point, Edgewood-Candler Park and West End



Conducted Housing and Economic Development Research on TODs



Currently working on BRT Land Use Study in Gwinnett County



\$42 million in LCI funds to TOD supporting projects

ARC TOD Work Program

- Develop a TOD/Transit Access Program
- Assist Local Governments in Road Safety Audits

DRAFT



Upcoming Schedule

